

## November Is American Diabetes Month

Diabetes is the leading cause of end-stage renal disease (ESRD), nontraumatic lower-extremity amputations (LEAs), and new cases of blindness among adults in the United States, and a major cause of heart disease and stroke (1). However, persons with diabetes, together with their support network, can take steps to control the disease and minimize the risk for complications (1).

Although rates of diabetes-related complications (e.g., ESRD and LEAs) have declined (2), the number of persons in the United States with diabetes is projected to double or triple by 2050 if current trends in diabetes prevalence continue (3). However, among adults at risk for type 2 diabetes, weight loss and physical activity can prevent or delay its onset (4).

CDC and state and territorial diabetes prevention and control programs are working with public and private partners to improve outcomes for persons with diabetes and to reduce the incidence of type 2 diabetes. CDC's National Diabetes Prevention Program is supporting the nationwide implementation of community-based lifestyle programs, beginning in 17 U.S. communities (4). Resources on family history and gestational diabetes are available at <http://www.yourdiabetesinfo.org>, and information about diabetes is available at <http://www.cdc.gov/diabetes>.

### References

1. CDC. National diabetes fact sheet: general information and national estimates on diabetes in the United States, 2007. Atlanta, GA: US Department of Health and Human Services, CDC; 2008. Available at [http://www.cdc.gov/diabetes/pubs/pdf/ndfs\\_2007.pdf](http://www.cdc.gov/diabetes/pubs/pdf/ndfs_2007.pdf). Accessed October 27, 2010.
2. Gregg EW, Albright AL. The public health response to diabetes—two steps forward, one step back. *JAMA* 2009;301:1596–8.
3. Boyle JP, Thompson TJ, Gregg EW, Barker LE, Williamson DF. Projection of the year 2050 burden of diabetes in the US adult population: dynamic modeling of incidence, mortality, and prediabetes prevalence. *Popul Health Metr* 2010;8:29 [Epub ahead of print].
4. Ackermann RT, Finch EA, Brizendine E, Zhou H, Marrero DG. Translating the Diabetes Prevention Program into the community: the DEPLOY Pilot Study. *Am J Prev Med* 2008;35:357–63.

## Incidence of End-Stage Renal Disease Attributed to Diabetes Among Persons With Diagnosed Diabetes — United States and Puerto Rico, 1996–2007

During 2007, approximately 110,000 persons in the United States and Puerto Rico began treatment for end-stage renal disease (ESRD) (i.e., kidney failure requiring dialysis or transplantation) (1). Diabetes is the leading cause of ESRD in the United States, accounting for 44% of new cases in 2007 (1). Although the number of persons initiating treatment for kidney failure each year who have diabetes listed as a primary cause (ESRD-D) has increased since 1996 (1,2), ESRD-D incidence among persons with diagnosed diabetes has declined since 1996 (3). To determine whether this decline occurred in every U.S. region and in every state, CDC analyzed 1996–2007 data from the U.S. Renal Data System (USRDS) and the Behavioral Risk Factor Surveillance System (BRFSS). During the period, the age-adjusted rate of ESRD-D among persons with diagnosed diabetes declined 35% overall, from 304.5 to 199.1 per 100,000 persons with diagnosed diabetes, and declined in all U.S. regions and in most states. No state showed a significant increase in the age-adjusted ESRD-D rate. Continued awareness of risk factors for kidney failure and interventions to improve diabetes care are needed to sustain and improve these trends.

USRDS collects, analyzes, and distributes ESRD clinical and claims data to the Centers for Medicare and Medicaid Services (CMS) (1). Health-care providers are required by law to complete the CMS Medical Evidence Report for each new patient with ESRD. USRDS collects demographic data and

### INSIDE

- 1367 Global Routine Vaccination Coverage, 2009
- 1372 Rapid Diagnostic Tests for Malaria — Haiti, 2010
- 1374 Notes from the Field
- 1375 Announcement
- 1376 QuickStats



ESRD-related information (e.g., date patients were first treated, diagnosed primary cause of renal failure). The USRDS Renal Data Extraction and Referencing System, an online data querying application, was used to determine the number of persons initiating ESRD treatment (i.e., dialysis or transplantation) with diabetes listed as a primary cause in each state, the District of Columbia (DC), and Puerto Rico for each of the years during 1996–2007. Throughout the period, the proportion of new ESRD cases that were ESRD-D ranged from 43% to 45% (1). Incidence of ESRD-D was calculated at a state/territorial and U.S. census region level by dividing the number of persons with a new diagnosis of ESRD-D in the geographic unit (determined by their initiation of treatment) by the estimated number of persons with diagnosed diabetes in the geographic unit. The number of persons aged  $\geq 18$  years with diagnosed diabetes was estimated from BRFSS, which conducts state-based, random-digit-dialed telephone surveys in the 50 states, DC, Puerto Rico, and other U.S. territories. In 2007, the median BRFSS response rate was 50.6% (range: 26.9%–65.4%) for the 50 states and DC and 70.4% for Puerto Rico.

Respondents were classified as having diagnosed diabetes if they answered “yes” to the question “Has a doctor ever told you that you have diabetes?” Women who were told that they had diabetes only during pregnancy were classified as not having diabetes. BRFSS data were weighted to represent the noninstitutionalized U.S. population. Data were analyzed using statistical software to estimate standard errors and calculate 95% confidence intervals (CIs). Incidence was age adjusted directly to the 2000 U.S. standard population, and weighted least squares regression was used for state and regional-level trend analyses. Linear and quadratic terms were included in the models, and results were considered significant if  $p < 0.05$ . Nonsignificant quadratic terms were dropped from the models. Significant terms indicated a trend (i.e., linear or nonlinear) in the data over time.

During 1996–2007, the total number of adults aged  $\geq 18$  years in the United States and Puerto Rico who began treatment for ESRD-D each year increased significantly, from 32,716 (state range: 32–3,719) to 48,712 (state range: 37–6,059) (test for trend,  $p < 0.001$ ) (Table, Figure 1). More recently, the number of ESRD-D cases appears to be leveling off (Figure 1). During 2007,

The *MMWR* series of publications is published by the Office of Surveillance, Epidemiology, and Laboratory Services, Centers for Disease Control and Prevention (CDC), U.S. Department of Health and Human Services, Atlanta, GA 30333.

Suggested citation: Centers for Disease Control and Prevention. [Article title]. *MMWR* 2010;59:[inclusive page numbers].

#### Centers for Disease Control and Prevention

Thomas R. Frieden, MD, MPH, *Director*

Harold W. Jaffe, MD, MA, *Associate Director for Science*

James W. Stephens, PhD, *Office of the Associate Director for Science*

Stephen B. Thacker, MD, MSc, *Deputy Director for Surveillance, Epidemiology, and Laboratory Services*

#### MMWR Editorial and Production Staff

Ronald L. Moolenaar, MD, MPH, *Editor, MMWR Series*

John S. Moran, MD, MPH, *Deputy Editor, MMWR Series*

Robert A. Gunn, MD, MPH, *Associate Editor, MMWR Series*

Teresa F. Rutledge, *Managing Editor, MMWR Series*

Douglas W. Weatherwax, *Lead Technical Writer-Editor*

Donald G. Meadows, MA, Jude C. Rutledge, *Writer-Editors*

Martha F. Boyd, *Lead Visual Information Specialist*

Malbea A. LaPete, Stephen R. Spriggs, Terraye M. Starr

*Visual Information Specialists*

Quang M. Doan, MBA, Phyllis H. King

*Information Technology Specialists*

#### MMWR Editorial Board

William L. Roper, MD, MPH, Chapel Hill, NC, *Chairman*

Virginia A. Caine, MD, Indianapolis, IN

Jonathan E. Fielding, MD, MPH, MBA, Los Angeles, CA

David W. Fleming, MD, Seattle, WA

William E. Halperin, MD, DrPH, MPH, Newark, NJ

King K. Holmes, MD, PhD, Seattle, WA

Deborah Holtzman, PhD, Atlanta, GA

John K. Iglehart, Bethesda, MD

Dennis G. Maki, MD, Madison, WI

Patricia Quinlisk, MD, MPH, Des Moines, IA

Patrick L. Remington, MD, MPH, Madison, WI

Barbara K. Rimer, DrPH, Chapel Hill, NC

John V. Rullan, MD, MPH, San Juan, PR

William Schaffner, MD, Nashville, TN

Anne Schuchat, MD, Atlanta, GA

Dixie E. Snider, MD, MPH, Atlanta, GA

John W. Ward, MD, Atlanta, GA

**TABLE. Number and age-adjusted rate\* of persons aged ≥18 years with diagnosed diabetes who began treatment for end-stage renal disease attributed to diabetes, and trend analysis, by U.S. census region and state — United States and Puerto Rico, 1996–2007**

Region/State	1996			2007			Linear trend 1996–2007†
	No.	Rate	(95% CI‡)	No.	Rate	(95% CI)	p value
<b>Midwest</b>	<b>7,179</b>	<b>302.0</b>	<b>(269.4–334.7)</b>	<b>9,796</b>	<b>194.2</b>	<b>(184.1–204.4)</b>	<b>&lt;0.001</b>
Illinois	1,486	283.1	(218.5–347.6)	1,974	177.3	(154.2–200.4)	0.02
Indiana	647	343.3	(218.5–468.1)	959	233.4	(187.9–279.0)	0.005
Iowa	254	328.4	(237.9–418.9)	313	166.6	(139.1–194.0)	0.01
Kansas	234	341.1	(213.3–468.9)	308	159.1	(137.4–180.7)	<0.001
Michigan	1,279	300.9	(221.7–380.0)	1,628	197.8	(173.5–222.1)	0.005
Minnesota	352	209.0	(173.3–244.8)	498	167.0	(133.5–200.4)	0.02
Missouri	653	502.6	(243.1–762.2)	917	206.6	(170.4–242.9)	0.006
Nebraska	156	241.9	(172.3–311.5)	233	182.4	(153.0–211.8)	0.03
North Dakota	50	457.1¶	(184.4–729.8)	90	216.9	(178.6–255.1)	0.87
Ohio	1,514	309.0	(222.4–395.7)	2,134	202.6	(183.5–221.7)	0.02
South Dakota	90	461.3	(320.2–602.4)	100	249.6	(205.8–293.5)	0.007
Wisconsin	464	385.8	(203.4–568.2)	642	232.8	(183.0–282.6)	0.12
<b>Northeast</b>	<b>5,972</b>	<b>303.2</b>	<b>(266.2–340.1)</b>	<b>8,302</b>	<b>182.6</b>	<b>(170.3–194.9)</b>	<b>0.002</b>
Connecticut	330	217.5	(159.6–275.4)	409	160.9	(137.0–184.8)	0.03
Maine	73	184.6	(117.7–251.5)	119	108.3	(94.1–122.5)	0.003
Massachusetts	574	200.8	(135.8–265.8)	686	139.2	(128.3–150.0)	<0.001
New Hampshire	58	347.5¶	(92.7–602.3)	103	108.1	(90.0–126.2)	0.002
New Jersey	1,072	336.9	(258.6–415.2)	1,585	193.8	(169.1–218.6)	0.03
New York	2,189	442.0	(306.9–577.1)	3,094	202.2	(172.8–231.6)	0.01
Pennsylvania	1,540	269.9	(204.7–335.1)	2,148	197.1	(162.6–231.6)	<0.001
Rhode Island	99	282.8	(192.9–372.8)	112	138.3	(114.2–162.4)	0.001
Vermont	37	182.7	(139.1–226.4)	46	126.5	(95.6–157.3)	0.16
<b>South</b>	<b>12,687</b>	<b>344.9</b>	<b>(317.1–372.6)</b>	<b>19,517</b>	<b>199.1</b>	<b>(192.6–205.6)</b>	<b>&lt;0.001</b>
Alabama	602	234.8	(185.5–284.1)	899	212.2	(186.9–237.5)	0.12
Arkansas	305	400.8	(278.7–523.0)	427	186.6	(160.7–212.5)	0.01
Delaware	84	254.4	(193.0–315.9)	146	210.6	(176.7–244.4)	0.21
District of Columbia	162	518.5	(332.3–704.7)	131	269.6	(226.6–312.6)	0.04
Florida	1,742	264.3	(208.5–320.1)	2,872	194.4	(172.9–216.0)	0.006
Georgia	1,073	453.7	(326.6–580.8)	1,595	180.7	(163.0–198.4)	<0.001
Kentucky	411	357.0	(234.2–479.7)	690	190.9	(160.7–221.1)	<0.001
Louisiana	704	306.0	(226.7–385.3)	960	251.1	(218.3–284.0)	0.001
Maryland	733	348.2	(269.5–426.8)	891	207.6	(182.2–233.0)	0.003
Mississippi	454	372.3	(266.8–477.8)	563	199.5	(178.1–220.9)	0.006
North Carolina	1,039	544.4	(301.4–787.4)	1,548	223.2	(202.0–244.4)	<0.001
Oklahoma	383	538.4	(264.4–812.4)	638	201.7	(177.1–226.3)	0.004
South Carolina	591	373.7	(273.7–473.7)	836	230.3	(202.9–257.8)	0.01
Tennessee	615	255.9	(208.8–303.1)	1,035	146.4	(123.8–168.9)	<0.001
Texas	2,751	494.0	(343.7–644.3)	4,668	210.9	(197.0–224.7)	<0.001
Virginia	804	254.9	(192.7–317.1)	1,233	217.0	(185.4–248.5)	0.02
West Virginia	234	239.4	(188.1–290.8)	385	177.4	(157.4–197.4)	0.002
<b>West</b>	<b>6,342</b>	<b>276.4</b>	<b>(242.1–310.7)</b>	<b>10,230</b>	<b>219.2</b>	<b>(200.9–237.5)</b>	<b>&lt;0.001</b>
Alaska	33	189.7	(105.7–273.8)	59	153.8	(117.1–190.5)	0.04
Arizona	642	516.4	(325.0–707.7)	1,052	225.5	(178.2–272.8)	<0.001
California	3,719	241.7	(198.2–285.3)	6,059	234.4	(200.0–268.8)	0.07
Colorado	331	403.9	(247.7–560.1)	441	177.2	(158.3–196.1)	0.002
Hawaii	235	421.8	(321.0–522.5)	368	450.0	(363.4–536.6)	0.98
Idaho	82	358.8	(235.0–482.5)	157	182.8	(152.4–213.3)	<0.001
Montana	65	309.9	(194.7–425.0)	79	177.2	(140.3–214.0)	0.001
Nevada	141	255.4	(179.0–331.8)	361	187.2	(152.8–221.6)	0.02
New Mexico	289	449.4	(290.8–607.9)	373	262.0	(226.0–298.0)	<0.001
Oregon	235	284.0	(189.4–378.7)	366	189.7	(146.7–232.6)	0.01
Utah	127	319.0	(217.7–420.3)	218	192.8	(144.9–240.6)	0.01
Washington	411	265.2	(206.4–323.9)	660	160.7	(147.8–173.6)	0.002
Wyoming	32	233.9	(176.4–291.4)	37	121.8	(100.8–142.9)	0.004
<b>Puerto Rico</b>	<b>536</b>	<b>152.7</b>	<b>(127.5–177.9)</b>	<b>867</b>	<b>196.3</b>	<b>(166.5–226.2)</b>	<b>&lt;0.001</b>
<b>Total</b>	<b>32,716</b>	<b>304.5</b>	<b>(288.8–320.3)</b>	<b>48,712</b>	<b>199.1</b>	<b>(193.9–204.2)</b>	<b>&lt;0.001</b>

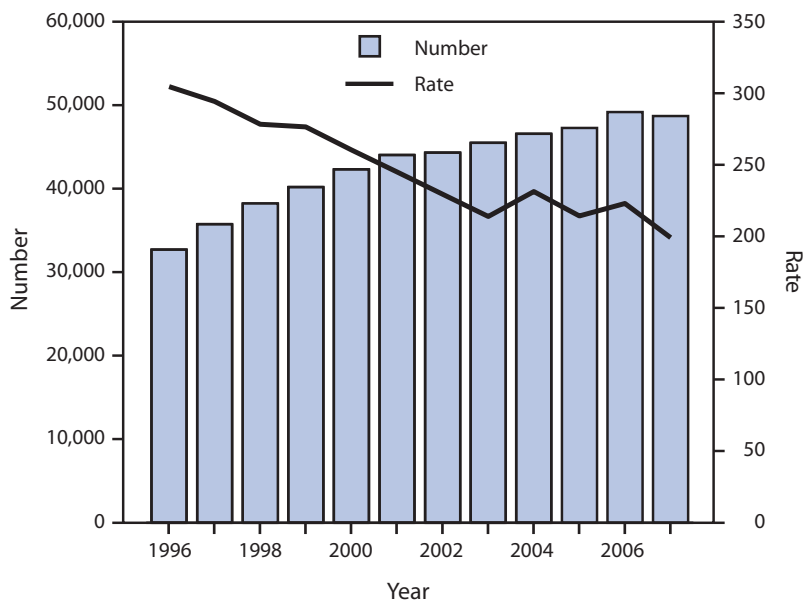
\* Per 100,000 persons with diagnosed diabetes and age adjusted by the direct method to the 2000 U.S. standard population.

† Using weighted least squares regression for states and regions. Linear and quadratic terms were included in the models, and results were considered significant if p&lt;0.05. Nonsignificant quadratic terms were dropped from the models. Quadratic trends were significant for the Northeast region (p=0.02), and for Florida (p=0.03), Idaho (p=0.001), Indiana (p=0.01), Iowa (p=0.03), Missouri (p=0.02), New York (p=0.03), Oregon (p=0.03), Puerto Rico (p=0.001), South Dakota (p=0.02), and Washington (p=0.008). Significant terms indicated a decreasing trend (i.e., linear or nonlinear) in the data over time.

‡ Confidence interval.

¶ Adjusted relative standard error &gt;30%: New Hampshire (30.4%) and North Dakota (37.1%).

**FIGURE 1. Number and age-adjusted rate\* of persons aged  $\geq 18$  years with diagnosed diabetes who began treatment for end-stage renal disease attributed to diabetes — United States and Puerto Rico, 1996–2007**



\* Per 100,000 persons with diagnosed diabetes and age adjusted by the direct method to the 2000 U.S. standard population.

approximately 40% of the new ESRD-D cases occurred in the South, and approximately 20% occurred in each of the other three U.S. census regions (Table).<sup>\*</sup> However, the rate of ESRD-D among persons with diagnosed diabetes in 2007 was significantly higher in the West (219.2 per 100,000) compared with the Northeast (182.6 per 100,000). During 1996–2007, the age-adjusted ESRD-D incidence in persons with diagnosed diabetes decreased 35%, from 304.5 per 100,000 (state range: 152.7–544.4) to 199.1 per 100,000 (state range: 108.1–450.0) ( $p < 0.001$ ) (Table, Figure 1). Incidence declined significantly in all U.S. regions (Figure 2). Estimated age-adjusted ESRD-D incidence declined in most states, but the trend was not significant in every state (Table). The age-adjusted ESRD-D incidence in Puerto Rico increased significantly from 1996 to 2003 ( $p < 0.001$ ), and decreased, but not significantly, from 2003 to 2007 ( $p = 0.30$ ).

<sup>\*</sup> *Midwest:* Illinois, Indiana, Iowa, Kansas, Michigan, Minnesota, Missouri, Nebraska, North Dakota, Ohio, South Dakota, and Wisconsin; *Northeast:* Connecticut, Maine, Massachusetts, New Hampshire, New Jersey, New York, Pennsylvania, Rhode Island, and Vermont; *South:* Alabama, Arkansas, Delaware, District of Columbia, Florida, Georgia, Kentucky, Louisiana, Maryland, Mississippi, North Carolina, Oklahoma, South Carolina, Tennessee, Texas, Virginia, and West Virginia; *West:* Alaska, Arizona, California, Colorado, Hawaii, Idaho, Montana, Nevada, New Mexico, Oregon, Utah, Washington, and Wyoming.

### Reported by

NR Burrows, MPH, I Hora, MS, P Cho, MPH, RB Gerzoff, MS, LS Geiss, MA, Div of Diabetes Translation, National Center for Chronic Disease Prevention and Health Promotion, CDC.

### Editorial Note

ESRD is a costly and disabling condition that can result in premature death (1). During 1996–2007, the number of ESRD-D cases increased, as did the number of persons with diagnosed diabetes (2). However, during this period, the rate of increase in the number of persons with diagnosed diabetes was greater than the rate of increase in the number of ESRD-D cases. Thus, among persons with diagnosed diabetes, the age-adjusted ESRD-D rate decreased during the period by 35%, from 304.5 to 199.1 per 100,000 persons with diagnosed diabetes. The age-adjusted ESRD-D incidence also declined in all U.S. regions and in most states. Consistent with this finding, similar declining trends have been seen for other diabetes-related complications, such as lower-extremity amputation and visual impairment (2). Reasons for this decline in ESRD-D incidence cannot be determined from surveillance data but might include reductions in risk factors for kidney failure (e.g., hyperglycemia and hypertension) (4,5) or better treatment of kidney disease, including the use of new pharmacologic agents (e.g., angiotensin-converting enzyme inhibitors [ACEIs] or angiotensin-receptor blockers [ARBs]) that slow the decline in kidney function and thus delay ESRD-D (1,6). In 2007, nearly 80% of persons aged 20–64 years with diabetes and chronic kidney disease used ACEIs or ARBs (1).

Although age-adjusted ESRD-D incidence in the United States has declined, the number of newly diagnosed cases has increased, and that trend likely will continue as the U.S. population ages and as the number of persons with diabetes increases (2). Furthermore, control of ESRD risk factors remains suboptimal (7,8), and strategies are needed to sustain declines in ESRD-D incidence to reduce the future ESRD burden. In addition to diabetes and hypertension, risk factors for kidney disease include cardiovascular disease, obesity, elevated cholesterol, increasing age, and a family history of kidney disease (1). Effective interventions to improve control of blood sugar, hypertension, and lipid levels might slow the progression of kidney disease (6), and effective community-based approaches to prevent obesity and

**What is already known on this topic?**

The incidence of end-stage renal disease attributed to diabetes (ESRD-D) in the U.S. population with diagnosed diabetes has declined since 1996.

**What is added by this report?**

The decline in incidence of ESRD-D during 1996–2007 was confirmed in all U.S. regions and most states.

**What are the implications for public health practice?**

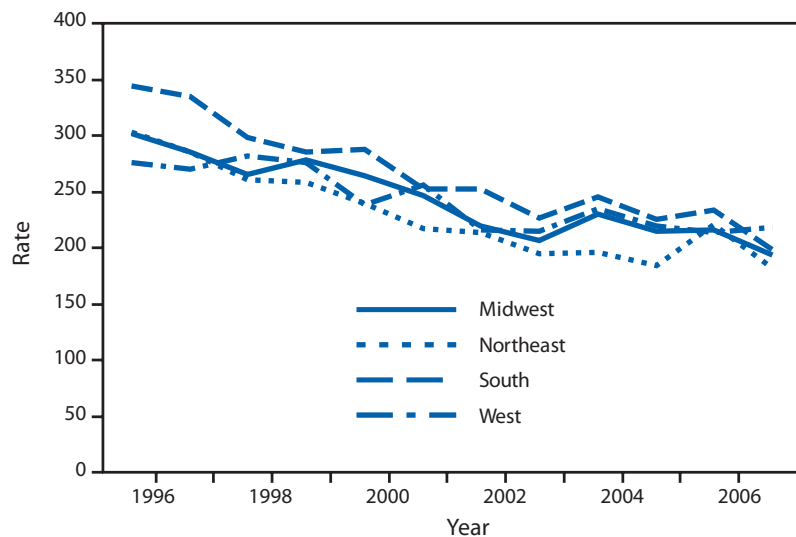
Continued awareness and interventions to reduce the prevalence of risk factors for kidney failure and to improve diabetes care are needed to sustain the widespread decrease in ESRD-D incidence.

increase physical activity might reduce the incidence of type 2 diabetes (9).

The findings in this report are subject to at least three limitations. First, data were collected for patients whose ESRD treatment was reported to CMS and do not include patients who died before receiving treatment or persons who refused treatment and thus were not reported to CMS. Under the ESRD entitlement program, persons initiating treatment for ESRD in the United States and Puerto Rico are entitled to receive Medicare benefits from CMS (1). Second, changes in incidence of diagnosed ESRD-D might have been caused by factors other than a true change in disease incidence. These factors might include access to or acceptance of ESRD treatment or changes in treatment and care practices. Furthermore, changes in physician reporting of the primary cause of kidney failure could affect incidence, and revised diagnostic criteria for diabetes in 1997 might have led to a greater number of persons being detected with diabetes earlier in the disease process (10). Finally, the estimated population with diagnosed diabetes is likely to be an underestimate because BRFSS is a telephone survey that excludes the institutionalized population, active duty military personnel, and persons with cellular telephones, and because prevalence is based on self-report.

Continued awareness and interventions to reduce the prevalence of risk factors for kidney failure and to improve diabetes care are needed to sustain the decrease in ESRD-D incidence. CDC and state and territorial diabetes prevention and control programs have been working with public and private partners to reduce the incidence of type 2 diabetes and to improve outcomes for persons with diabetes. CDC's new National Diabetes Prevention Program is supporting the nationwide implementation of community-based

**FIGURE 2. Age-adjusted rate\* of treatment initiation for end-stage renal disease attributed to diabetes among persons aged  $\geq 18$  years with diagnosed diabetes, by U.S. census region<sup>†</sup> — United States, 1996–2007**



\* Per 100,000 persons with diagnosed diabetes and age adjusted by the direct method to the 2000 U.S. standard population.

<sup>†</sup> *Midwest:* Illinois, Indiana, Iowa, Kansas, Michigan, Minnesota, Missouri, Nebraska, North Dakota, Ohio, South Dakota, and Wisconsin; *Northeast:* Connecticut, Maine, Massachusetts, New Hampshire, New Jersey, New York, Pennsylvania, Rhode Island, and Vermont; *South:* Alabama, Arkansas, Delaware, District of Columbia, Florida, Georgia, Kentucky, Louisiana, Maryland, Mississippi, North Carolina, Oklahoma, South Carolina, Tennessee, Texas, Virginia, and West Virginia; *West:* Alaska, Arizona, California, Colorado, Hawaii, Idaho, Montana, Nevada, New Mexico, Oregon, Utah, Washington, and Wyoming.

lifestyle programs to prevent or delay the onset of type 2 diabetes among persons at high risk (9). In partnership with YMCA USA, UnitedHealth Group, Indiana University, University of Pittsburgh, and Emory University, CDC is beginning this new program in 17 communities throughout the United States. The National Diabetes Education Program (NDEP), sponsored by CDC and the National Institutes of Health, works with partners at the federal, state, and local levels to improve the treatment and outcomes for persons with diabetes, promote early diagnosis, and prevent or delay the onset of type 2 diabetes. NDEP conducts national, multicultural campaigns to educate persons with diabetes, their families, and health-care providers about the importance of controlling blood glucose, blood pressure, and cholesterol to improve health outcomes and lower the risk for complications (including kidney disease), and to promote behaviors to prevent or delay the onset of type 2 diabetes among persons at risk.<sup>†</sup> To assess progress in diabetes prevention and control, CDC's National Diabetes

<sup>†</sup> Additional information is available at <http://ndep.nih.gov/about-ndep/index.aspx>.

Surveillance System monitors the incidence of diabetes and the health and well being of the population with diabetes (2). In addition, CDC soon will establish a Chronic Kidney Disease Surveillance System to monitor the burden of chronic kidney disease in the United States and evaluate prevention strategies.<sup>§</sup>

<sup>§</sup> Additional information is available at <http://www.cdc.gov/diabetes/projects/kidney.htm>.

### Acknowledgments

This report is based, in part, on contributions from BRFSS state coordinators and the Div of Behavioral Surveillance, Office of Surveillance, Epidemiology, and Laboratory Svcs, CDC.

### References

1. US Renal Data System. USRDS 2009 annual data report: atlas of chronic kidney disease and end-stage renal disease in the United States. Bethesda, MD: National Institutes of Health, National Institute of Diabetes and Digestive and Kidney Diseases; 2009.
2. CDC. National Diabetes Surveillance System. Atlanta, GA: US Department of Health and Human Services, CDC; 2010. Available at <http://apps.nccd.cdc.gov/ddtstrs/default.aspx>. Accessed October 21, 2010.
3. Burrows NR, Li Y, Geiss LS. Incidence of treatment for end-stage renal disease among individuals with diabetes in the U.S. continues to decline. *Diabetes Care* 2010;33:73–7.
4. Hoerger TJ, Segel JE, Gregg EW, Saaddine JB. Is glycemic control improving in U.S. adults? *Diabetes Care* 2008;31:81–6.
5. Imperatore G, Cadwell BL, Geiss L, et al. Thirty-year trends in cardiovascular risk factor levels among US adults with diabetes: National Health and Nutrition Examination Surveys, 1971–2000. *Am J Epidemiol* 2004;160:531–9.
6. James MT, Hemmelgarn BR, Tonelli M. Early recognition and prevention of chronic kidney disease. *Lancet* 2010;375:1296–309.
7. Saydah SH, Fradkin J, Cowie CC. Poor control of risk factors for vascular disease among adults with previously diagnosed diabetes. *JAMA* 2004;291:335–42.
8. Saaddine JB, Cadwell B, Gregg EW, et al. Improvements in diabetes processes of care and intermediate outcomes: United States, 1988–2002. *Ann Intern Med* 2006;144:465–74.
9. Ackermann RT, Finch EA, Brizendine E, Zhou H, Marrero DG. Translating the Diabetes Prevention Program into the community: the DEPLOY Pilot Study. *Am J Prev Med* 2008;35:357–63.
10. Expert Committee on the Diagnosis and Classification of Diabetes Mellitus. Report of the Expert Committee on the Diagnosis and Classification of Diabetes Mellitus. *Diabetes Care* 1997;20:1183–97.

## Global Routine Vaccination Coverage, 2009

The widespread use of vaccines has greatly improved global public health, preventing millions of childhood hospitalizations and deaths each year. Vaccination of children also is projected to avert adult deaths through the prevention of hepatitis B (HepB) virus–related chronic liver disease and liver cancer (1) and human papilloma virus–related cervical cancer (2). When the World Health Organization (WHO) began the Expanded Programme on Immunization in 1974, <5% of the world's children had been fully vaccinated with bacille Calmette–Guérin (BCG), diphtheria–tetanus–pertussis (DTP) vaccine, oral poliovirus vaccine, and measles-containing vaccine (MCV) during the first year of life (3). Since then, increased vaccination coverage has resulted in substantial reductions in morbidity and mortality, including a >99% decline in polio incidence since 1988 (4), with eradication on the horizon, and a 78% decline in measles-associated mortality from 2000 to 2008 (5). With the introduction of *Haemophilus influenzae* type b (Hib) vaccine, HepB vaccine, pneumococcal conjugate vaccine (PCV), and rotavirus vaccine into many countries' routine vaccination schedules, further reductions in morbidity and mortality are expected. However, based on an annual global birth cohort of approximately 130 million, an estimated 23 million infants worldwide still do not receive the benefits of routine vaccination (i.e., 3 doses of DTP during the first year of life). The Global Immunization Vision and Strategy (GIVS), developed in 2005 by WHO and UNICEF, assists countries in strengthening immunization programs and vaccinating more persons. GIVS aims to achieve 90% national 3-dose DTP (DTP3) coverage by age 12 months in all countries, and 80% coverage in every district or equivalent administrative unit by 2010 (and to sustain these levels through 2015 [6]). This report summarizes global routine vaccination coverage during 2000–2009 and progress toward achieving GIVS goals.

### Methods for Estimating Routine Vaccination Coverage

Routine vaccination coverage levels indicate recent immunization program performance and population immunity. Coverage usually is assessed based on the percentage of children who received a specified number of doses of a recommended vaccine during

the first year of life. This is in contrast to mass vaccination campaigns or other supplemental vaccine activities that do not record vaccine doses administered. Vaccination coverage is estimated using a number of methods. Administrative vaccination coverage is calculated by dividing vaccine doses reported to have been administered to the target population by the total estimated target population. Aggregated administrative data are analyzed at the national level, and national coverage data are reported annually to WHO and UNICEF on the Joint Reporting Form on Immunization (JRF), a standard questionnaire that was developed in 1998 and is sent to all 193 WHO member states.\* Vaccination coverage estimates are then reported on the WHO website.†

In many countries, household vaccination coverage surveys are conducted to validate administratively reported data. A representative sample of households is selected, and vaccination coverage is determined by examining the child's immunization card or by parental recall. WHO and UNICEF systematically review data from sources including government JRF reports, published and unpublished reports, coverage surveys, and consultation with local experts, to derive annual estimates of national coverage with recommended vaccines‡ (7). DTP3 coverage by age 12 months is the agreed-upon indicator of immunization program performance. In addition to DTP3, coverage with the first MCV dose (MCV1) is an indicator used to monitor progress toward the fourth Millennium Development Goal of reducing mortality among children aged <5 years by two thirds (from 1990 levels) by 2015.§

### Estimated Routine Vaccination Coverage, 2009

Estimated global DTP3 coverage in the 193 WHO member states increased from 74% in 2000 to 82% in 2009, reflecting the vaccination of 107.1 million

\* Additional information available at [http://www.who.int/entity/immunization\\_monitoring/routine/WHO\\_UNICEF\\_JRF\\_10\\_EN.xls](http://www.who.int/entity/immunization_monitoring/routine/WHO_UNICEF_JRF_10_EN.xls).

† Additional information available at [http://apps.who.int/immunization\\_monitoring/en/globalsummary/timeseries/tswucoveragedtp3.htm](http://apps.who.int/immunization_monitoring/en/globalsummary/timeseries/tswucoveragedtp3.htm).

‡ Estimates include BCG, first and third doses of DTP, third dose of polio vaccine (inactivated poliovirus vaccine or oral poliovirus vaccine), third dose of Hib vaccine, third dose of HepB vaccine, and first dose of MCV.

§ Additional information available at <http://www.un.org/millenniumgoals/childhealth.shtml>.

infants with 3 doses of DTP vaccine in 2009 (14.6 million more than in 2000). Changes in coverage varied by geographic region, and the overall increase mainly was attributed to improvements in vaccination coverage in the African (+16%), Eastern Mediterranean (+12%), and Western Pacific (+10%) WHO regions (Figure 1). National DTP3 coverage of  $\geq 90\%$  was reported by 122 (63%) countries, but only 48 (25%) reported  $\geq 80\%$  coverage in all districts, and only 55% of low-income countries are on track to achieve 90% coverage by 2015 (UNICEF, unpublished data, 2010). During 2007–2009, 149 (77%) countries had sustained DTP3 coverage of  $\geq 80\%$  (Figure 1); however, coverage in 2009 was  $<80\%$  in 36 (19%) countries, and six countries failed to achieve 50% DTP3 coverage. Among the 23.2 million children worldwide who did not receive 3 doses of DTP vaccine during the first year of life in 2009, 70% live in 10 countries, with approximately half in India (37%) and Nigeria (14%) (Figure 2).

From 2000 to 2009, estimated global MCV1 coverage increased from 71% to 82%, and 136 (70%)

countries added a second MCV dose to their routine vaccination schedules. Three-dose coverage with HepB vaccine (HepB3) increased from 30% to 70% during this period, and 3-dose coverage with Hib vaccine (Hib3) increased from 13% to 38%. In countries where Hib vaccine had been introduced, Hib3 coverage was similar to DTP3 coverage; however, a commensurate increase in global coverage did not occur because several large countries (e.g., China, India, Indonesia, and Nigeria) had not yet introduced Hib vaccine (Figure 3).

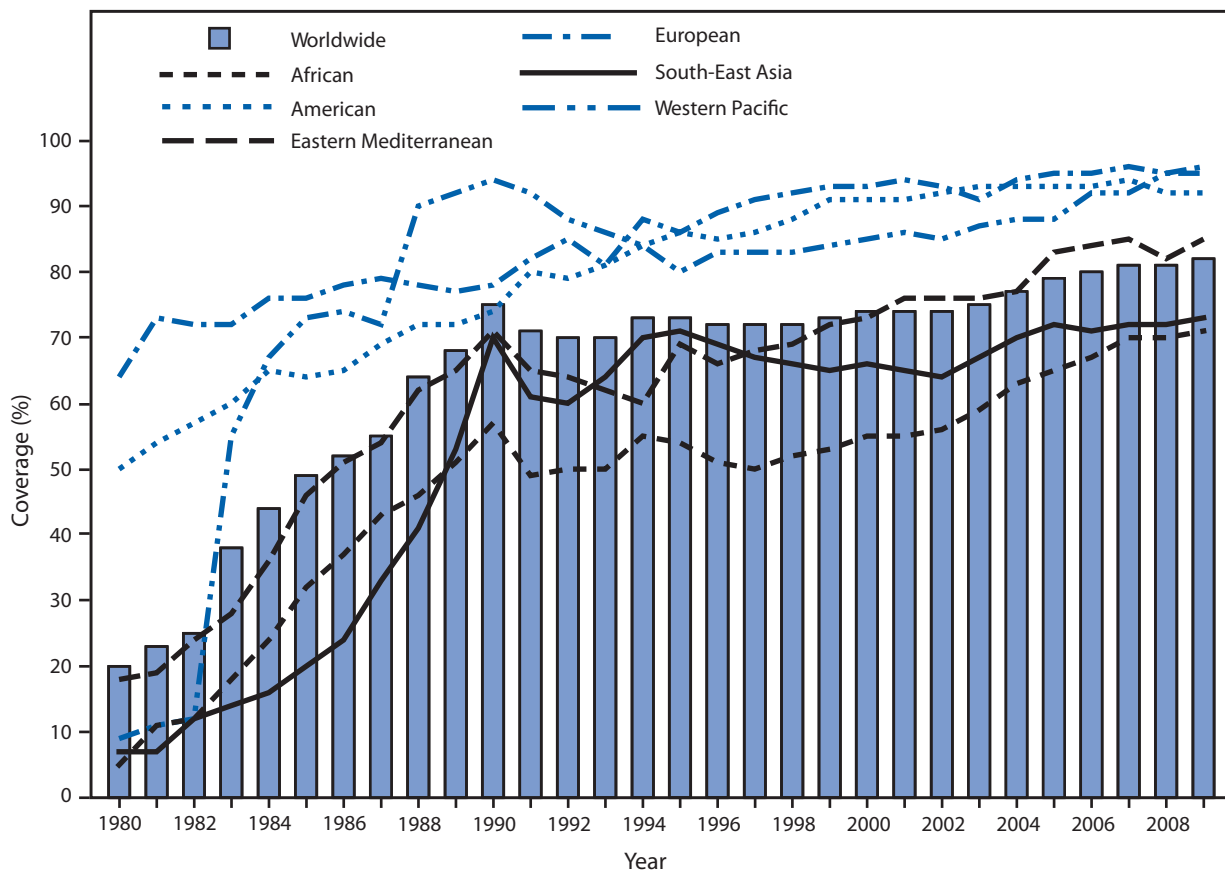
**Reported by**

*Dept of Immunization, Vaccines, and Biologicals, World Health Organization, Geneva, Switzerland. United Nations Children's Fund, New York, New York. Global Immunization Div, National Center for Immunization and Respiratory Diseases, CDC.*

**Editorial Note**

In 2009, more children than ever benefitted from vaccination worldwide. However, the global increase

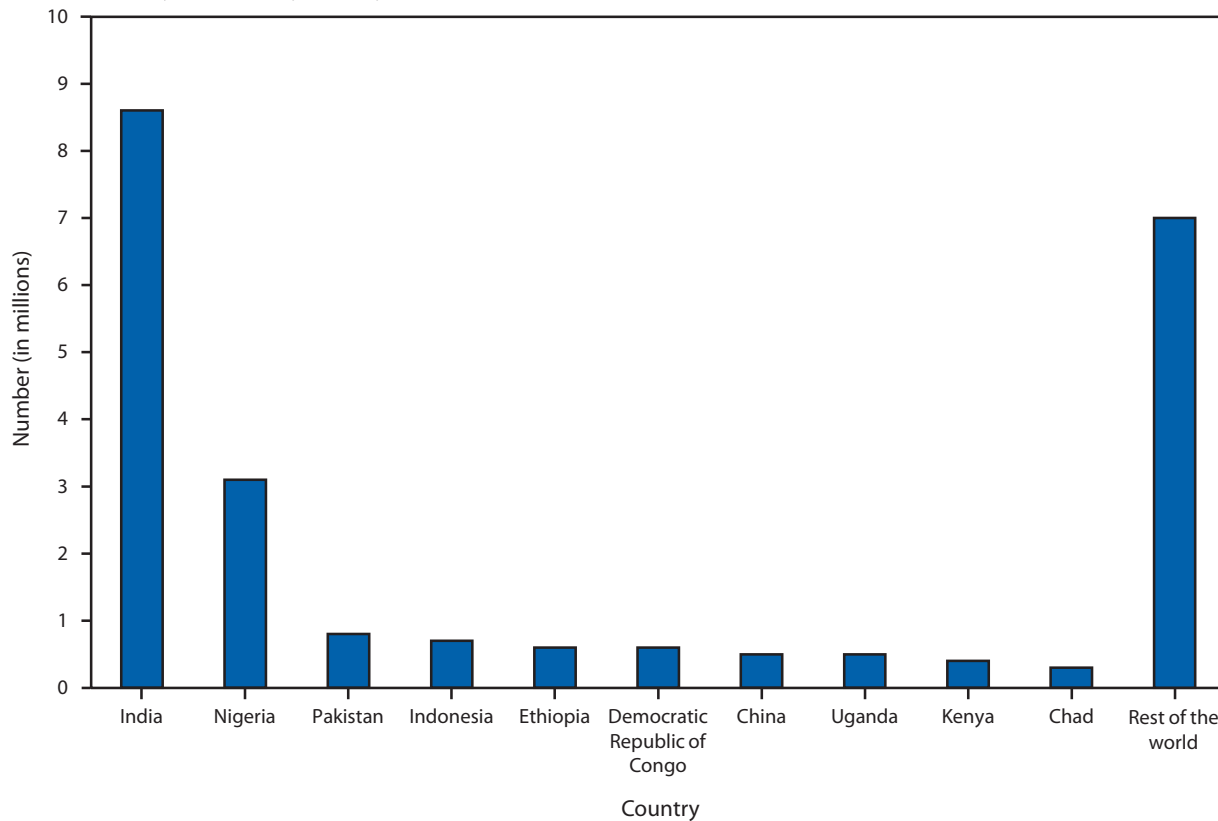
**FIGURE 1. Estimated coverage with 3 doses of diphtheria-tetanus-pertussis vaccine among children during the first year of life, worldwide and by World Health Organization region, 1980–2009**



Source: World Health Organization.



FIGURE 2. Estimated number (in millions) of children who had not received 3 doses of diphtheria-tetanus-pertussis vaccine during the first year of life, by country — worldwide, 2009



Source: World Health Organization.

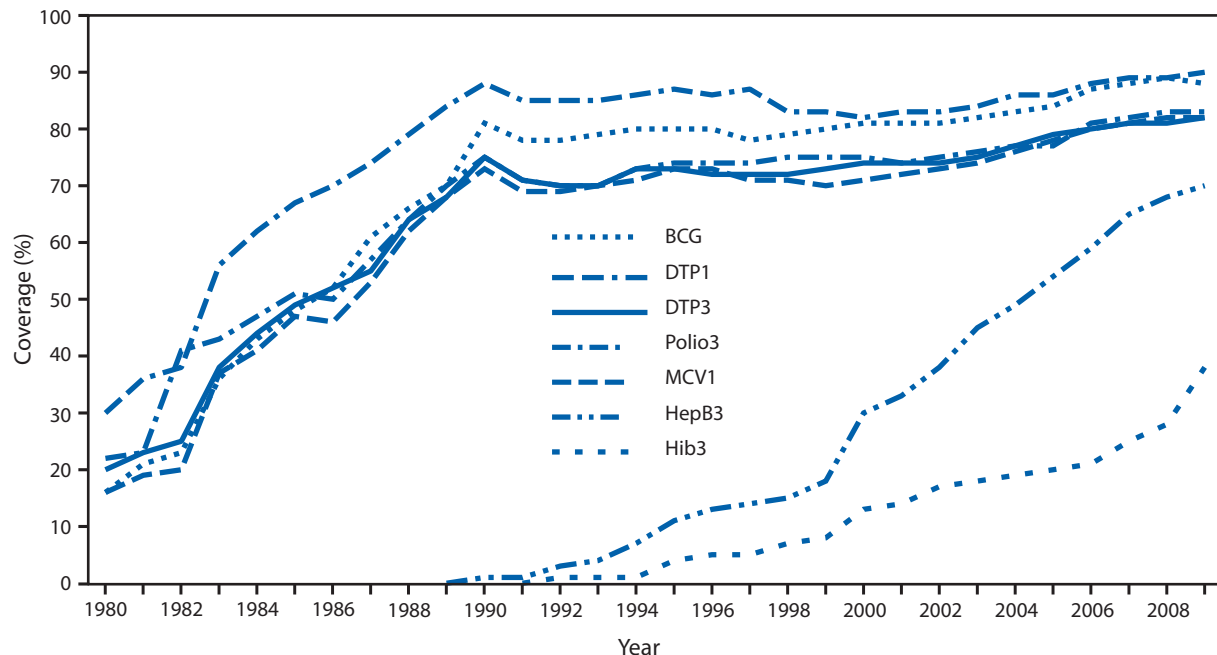
in vaccination coverage can obscure regional and local deficits in access to health services resulting from weak health systems, poor planning and resource management, limited outreach, inadequate supervision, and ineffective use of data. A recent review of published literature found that immunization program weaknesses were the leading reasons that children did not complete the DTP3 vaccination series (CDC, unpublished data, 2010). Countries such as Nigeria and India, home to approximately half the world's children who are not fully protected with 3 doses of DTP, will need to establish efficient, effective vaccination services that reach underserved populations to achieve vaccination targets.

In 2005, WHO and UNICEF created GIVS to guide countries in expanding the breadth and scope of vaccination and in using vaccination infrastructure to provide other essential health interventions (e.g., vitamin A, antihelminthics, and insecticide-treated bed nets) (6). In 2002, WHO, UNICEF, and other partners developed the Reaching Every District (RED) approach (8) to remove common

obstacles to vaccination and build district-level capacity. Components of the RED approach include effective planning and management of resources, outreach to underserved communities, providing supportive supervision and training, linking health services with communities, and promoting the use of district-level data for decision making. By 2009, 164 (85%) countries reported implementing at least one RED component, and 111 (58%) reported implementing at least four components. Periodic Intensification of Routine Immunization (PIRI)\*\* activities, such as Child Health Days and Immunization Weeks, are being used increasingly to supplement routine vaccination services, raise coverage, and reduce the number of children who do not complete the vaccination series. In 2009, a total of 109 (56%) countries reported using at least one supplemental vaccination delivery strategy.

\*\* Vaccination activities that share some characteristics of vaccination campaigns, while promoting the goal of raising routine vaccination coverage, rather than focusing primarily on accelerated disease-control activities.

FIGURE 3. Estimated vaccination coverage among children by age 12 months, by vaccine dose — worldwide, 1980–2009



**Abbreviations:** BCG = bacille Calmette-Guérin; DTP1 = 1 dose of diphtheria-tetanus-pertussis vaccine; DTP3 = 3 doses of diphtheria-tetanus-pertussis vaccine; Polio3 = 3 doses of polio vaccine; MCV1 = 1 dose of measles-containing vaccine; HepB3 = 3 doses of hepatitis B vaccine; Hib3 = 3 doses of *Haemophilus influenzae* type b (Hib) vaccine.

**Source:** World Health Organization.

Administrative data, although timely, are imperfect. Underreporting of vaccine doses will result in underestimation of coverage; alternatively, if children outside the target age group are vaccinated and included in the numerator, or if outdated census data that underestimate the target population are used in the denominator, coverage might be overestimated. As an alternative to administrative data, surveys can estimate coverage even if the size of the target population is not known, but they are retrospective and cannot provide timely information to immunization program managers. Survey data also might be adversely affected if interviewer training and supervision are inconsistent or if caretaker recall is unreliable (9).

Despite the extraordinary progress made toward reducing vaccine-preventable diseases during the past decade, the immunization agenda is unfinished. Increasing and expanding access to new and underutilized vaccines (e.g., PCV, Hib vaccine, and rotavirus vaccine) has the potential to greatly reduce pneumonia and diarrhea, the two leading causes of death among children aged <5 years in the developing world. As of June 2010, Hib vaccine has been introduced in 164 countries; however, because several large countries have not yet introduced the vaccine, it is only available to 48% of the 2010 global birth

cohort. Rotavirus vaccine has been introduced in 23 countries, representing 11% of the birth cohort, and PCV is available in 56 countries, representing 11% of the birth cohort.

One of the greatest challenges facing immunization programs is ensuring continued funding for vaccination of children in some of the poorest and most remote places on earth. Introducing new vaccines in low-income countries presents additional funding challenges. In 2000, the GAVI Alliance, a global health partnership representing private and public stakeholders, was established to improve vaccination services in poor countries<sup>††</sup> and to improve coverage with new and underutilized vaccines. Since 2000, \$2.2 billion has been disbursed to approximately 70 countries to support vaccination services, injection safety, new vaccine introduction, and the strengthening of health service systems. Nonetheless, if the GIVS goal for global coverage is to be met, strategies known to be effective must be prioritized and implemented in all countries.

<sup>††</sup> Additional information available at [http://www.gavialliance.org/media\\_centre/press\\_releases/2000\\_01\\_31\\_en\\_press\\_release.php](http://www.gavialliance.org/media_centre/press_releases/2000_01_31_en_press_release.php).

**What is already known on this topic?**

Since implementation of the Expanded Programme on Immunization in 1974, widespread use of vaccines has substantially reduced morbidity and mortality worldwide. In 2005, the World Health Organization and UNICEF developed the Global Immunization Vision and Strategy (GIVS), with the goal of protecting more persons against more diseases by increasing vaccination coverage, introducing new vaccines, and linking vaccination with provision of other health services.

**What is added by this report?**

During the past decade, global coverage of children with 3 doses of diphtheria-tetanus-pertussis (DTP) vaccine during the first year of life has reached 82%. However, substantial regional variations in coverage exist; approximately 23 million children (half of whom live in India and Nigeria) did not receive 3 doses of DTP vaccine during the first year of life, and many low-income countries will not reach 2010 vaccination targets.

**What are the implications for public health practice?**

Ensuring ongoing funding for existing vaccines, as well as the introduction of new and underutilized vaccines (e.g., *Haemophilus influenzae* type b, pneumococcal conjugate, and rotavirus vaccines) that have the potential to reduce childhood morbidity and mortality through prevention of many cases of pneumonia and diarrhea, will be a challenge in the next decade. To achieve GIVS goals, it is critical to strengthen immunization systems and prioritize and implement effective strategies in all countries.

**References**

1. Goldstein ST, Zhou F, Hadler SC, Bell BP, Mast EE, Margolis HS. A mathematical model to estimate global hepatitis B disease burden and vaccination impact. *Int J Epidemiol* 2005;34:1329–39.
2. Garland SM, Smith JS. Human papillomavirus vaccines: current status and future prospects. *Drugs* 2010;70:1079–98.
3. Keja K, Chan C, Hayden G, Henderson RH. Expanded Programme on Immunization. *World Health Stat Q* 1988;41:59–63.
4. CDC. Progress toward interruption of wild poliovirus transmission worldwide, 2009. *MMWR* 2010;59:545–50.
5. CDC. Global measles mortality 2000–2008. *MMWR* 2009;58:1321–6.
6. World Health Organization, UNICEF. Global Immunization Vision and Strategy 2006–2015. Geneva, Switzerland: World Health Organization; 2005. Available at [http://www.who.int/vaccines-documents/docspdf05/givs\\_final\\_en.pdf](http://www.who.int/vaccines-documents/docspdf05/givs_final_en.pdf). Accessed October 21, 2010.
7. Burton A, Monasch R, Lautenbach B, et al. WHO and UNICEF estimates of national infant immunization coverage: methods and processes. *Bull World Health Organ* 2009;87:535–41.
8. World Health Organization. Implementing RED approach: a guide for district health management teams. Brazzaville, Republic of Congo: World Health Organization Regional Office for Africa; 2004. Available at [http://www.who.int/immunization\\_delivery/systems\\_policy/AFRO-RED-guide.pdf](http://www.who.int/immunization_delivery/systems_policy/AFRO-RED-guide.pdf). Accessed October 21, 2010.
9. Murray CJL, Shengelia B, Gupta N, Moussavi S, Tandon A, Thieren M. Validity of reported vaccination coverage in 45 countries. *Lancet* 2003;362:1022–7.

## Rapid Diagnostic Tests for Malaria — Haiti, 2010

*Plasmodium falciparum* malaria is endemic to Haiti and remains a major concern for residents, including displaced persons, and emergency responders in the aftermath of the January 12, 2010 earthquake (1). Microscopy has been the only test approved in the national policy for the diagnosis and management of malaria in Haiti; however, the use of microscopy often has been limited by lack of equipment or trained personnel. In contrast, malaria rapid diagnostic tests (RDTs) require less equipment or training to use. To assist in the timely diagnosis and treatment of malaria in Haiti, the Ministry of Public Health and Population (MSPP), in collaboration with CDC, conducted a field assessment that guided the decision to approve the use of RDTs. This data-driven policy change greatly expands the opportunities for accurate malaria diagnosis across the country, allows for improved clinical management of febrile patients, and will improve the quality of malaria surveillance in Haiti.

The selection of diagnostic tests for malaria for a country's national policy depends on multiple factors including the availability of health facility and laboratory infrastructure, financial resources, skilled personnel, and local epidemiology of the disease. For these reasons, national policies might differ in their recommended first-line diagnostic test. In the United States, both microscopy and RDTs are recommended, and at minimum, either test should be available at health-care facilities for malaria diagnosis; the only approved RDT in the United States, however, is BinaxNOW Malaria (Inverness Medical, Princeton, New Jersey). In addition, polymerase chain reaction can be used for malaria diagnosis and is most useful for species confirmation.

Until now, official MSPP policy for laboratory diagnosis of malaria has been to rely exclusively on microscopy. RDTs had not been incorporated into the MSPP malaria control strategy because of concerns that these newer tools, when compared with microscopy, were not sufficiently sensitive and would be difficult to sustain in some settings in Haiti. After the earthquake, with the acute need for clinical services and malaria diagnostics and the presence of international nongovernmental organizations assisting with the response, MSPP allowed the use of RDTs for 90 days (January 12–April 12, 2010). No specific RDT brands were endorsed for temporary use.

During 2 weeks in April, MSPP and CDC compared the performance of expert microscopy with the performance of two brands of RDTs introduced temporarily in Haiti for malaria diagnosis. Four health facilities were included in the assessment. Of these, two sites where local health workers were trained to use one brand of RDT demonstrated acceptable sensitivity (100% and 84.2%) and specificity (91.4% and 94.0%). The third site, using the other brand of RDT, showed poor sensitivity (51.6%) but adequate specificity (94.4%). Shortly before the assessment, the World Health Organization issued RDT procurement recommendations based on previously published rigorous performance evaluations, and this latter RDT brand was not listed at that time as a preferred test for low transmission settings (2). The fourth site did not submit enough samples for comparison.

The in-country data demonstrated that at least one of the two brands of RDTs could perform adequately in Haiti, and these findings correlated with the published evaluations. Based on this experience, MSPP has adopted use of RDTs as part of the national strategy at the following health facilities: 1) health centers and clinics without microscopy capacity; and 2) departmental hospitals, community referral hospitals, and specialty hospitals during laboratory off-hours or if microscopy is not available. The use of RDTs is not permitted in teaching hospitals because these facilities are required to have microscopy capacity in Haiti.

As of July 2010, three brands of RDTs for the diagnosis of *P. falciparum* malaria have been approved by MSPP for use in Haiti: First Response Malaria Ag HRP2 (Premier Medical Corporation Ltd., Watchung, New Jersey), CareStart Malaria HRP2 (Pf) (Access Bio, Inc., Monmouth Junction, New Jersey), and SD Bioline Malaria Ag Pf (Standard Diagnostics, Inc., Yongin, Korea). Although in-country data from the RDT field assessment demonstrated that some RDTs could perform comparably to microscopy, the selection of these three brands was based on previously published laboratory evaluations (3,4). The main criterion used by MSPP for the approved RDTs was a detection rate\* of  $\geq 97\%$  for *P. falciparum*

\*A sample is considered detected only if all RDTs from two lots read by the first technician, at minimum specified reading time, are positive. Wild type *P. falciparum* samples at a concentration of 200 parasites/ $\mu$ L were used for laboratory testing.

at low parasite densities. The RDT that performed with adequate sensitivity in the field assessment had a detection rate exceeding this threshold and was included as one of the approved tests. Clinicians in Haiti, international emergency responders, and health officials should be aware of this change in policy, which now recommends the use of any of these three RDTs for the diagnosis of malaria in the specified health-care settings.

#### Reported by

*A Existe, MD, N Freeman, MPH, J Boncy, MD, National Public Health Laboratory; R Magloire, MD, Dept of Epidemiology and Laboratory Research; J-F Vely, MD, National Malaria Control Program, Haiti Ministry of Public Health and Population. M Chang, MD, H Bishop, A Macedo de Oliveira, MD, M McMorrow, MD, A Dasilva, PhD, J Barnwell, PhD, L Slutsker, MD, Div of Parasitic Diseases and Malaria, Center for Global Health; D Townes, MD, EIS Officer, CDC.*

#### References

1. CDC. Malaria acquired in Haiti—2010. *MMWR* 2010; 59:217–9.
2. World Health Organization. Information note on recommended selection criteria for malaria rapid diagnostic tests (RDTs). Geneva, Switzerland: World Health Organization; 2010. Available at [http://www.who.int/malaria/diagnosis\\_treatment/diagnosis/RDT\\_selection\\_criteria.pdf](http://www.who.int/malaria/diagnosis_treatment/diagnosis/RDT_selection_criteria.pdf). Accessed October 25, 2010.
3. World Health Organization. Malaria rapid diagnostic test performance: results of WHO product testing of malaria RDTs: round 1 (2008). Geneva, Switzerland: World Health Organization; 2009. Available at [http://www.wpro.who.int/sites/rdt/who\\_rdt\\_evaluation/call\\_for\\_testing.htm](http://www.wpro.who.int/sites/rdt/who_rdt_evaluation/call_for_testing.htm). Accessed October 27, 2010.
4. World Health Organization. Malaria rapid diagnostic test performance: results of WHO product testing of malaria RDTs: round 2 (2009). Geneva, Switzerland: World Health Organization; 2010. Available at [http://apps.who.int/tdr/publications/tdr-research-publications/rdt\\_round2/pdf/rdt\\_round2.pdf](http://apps.who.int/tdr/publications/tdr-research-publications/rdt_round2/pdf/rdt_round2.pdf). Accessed October 25, 2010.

## Notes from the Field

### ***Vibrio mimicus* Infection from Consuming Crayfish — Spokane, Washington, June 2010**

On June 24, 2010, the Spokane (Washington) Regional Health District (SRHD) was notified of two hospitalized patients under intensive care with severe dehydration whose stool specimens yielded *Vibrio mimicus*. CDC was asked to assist with the environmental and epidemiologic investigation. Investigators learned that both persons had consumed crayfish on June 20, 2010. The previous day, live crayfish obtained from an online seafood company had been boiled and served warm at a party. The chef reported that the boiled crayfish were served out of a cooler that had contained live crayfish, and the cooler had not been cleaned before being used to serve the cooked crayfish. After the party, the remaining crayfish were refrigerated overnight in different containers and served cold as leftovers the following evening on June 20.

Questionnaires were administered to 21 (95%) of 22 persons who had attended either the party on June 19 or the meal of leftovers on June 20. A case was defined as an illness in any person who had attended the party or the meal and experienced acute, watery diarrhea during June 19–25. Four cases were identified. Consuming leftover crayfish was associated with illness. Of eight persons who consumed leftover crayfish, four (50%) became ill compared with zero of the 13 persons who did not consume leftover crayfish (relative risk = 14; Fisher's exact test  $p$  value = 0.007). No other food items or environmental exposures were associated with illness. *V. mimicus* was isolated from cultures of stool specimens, and genes encoding cholera toxin were identified by polymerase chain reaction (PCR) in all three ill persons who submitted specimens. Two persons were hospitalized in an intensive-care unit with severe dehydration, metabolic acidosis, and acute renal failure. The two patients received intravenous fluid rehydration, bicarbonate infusions, and antibiotics; they recovered fully. The other two persons had mild, self-limited diarrheal illness. Frozen leftover crayfish samples submitted to the Food and Drug Administration (FDA) on July 21 for testing did not yield *V. mimicus* by culture, nor were cholera toxin genes detected using PCR.

*V. mimicus* has been recognized as a cause of gastroenteritis transmitted by raw oysters, fish, turtle eggs, prawns, squid, and crayfish (1). *V. mimicus*, when carrying genes that encode cholera toxin, can cause severe watery diarrhea. Consumers and physicians should be aware that improperly handled marine and aquatic animal products can be a source of *V. mimicus* infections. Consumers should avoid cross-contamination of cooked seafood and other foods with raw seafood and juices from raw seafood and should follow FDA recommendations for selecting seafood and preparing it safely (3).

#### Reported by

D MacEachern, MS, J McCullough, MD, Spokane Regional Health District; J Duchin, MD, Public Health—Seattle & King County; M Tran, K MacDonald, PhD, A Marfin, MD, Washington State Dept of Health. J Jones PhD, Center for Food Safety and Applied Nutrition, Food and Drug Admin. A Newton, MPH, C Tarr, PhD, D Talkington, PhD, E Mintz, MD, EJ Barzilay, MD, Div of Foodborne, Waterborne, and Environmental Diseases, National Center for Emerging and Zoonotic Infectious Diseases; M Kay, DVM, E Cartwright, MD, EIS officers, CDC.

#### References

1. Oliver JD, Kaper JB. *Vibrio* species. In: Food microbiology: fundamentals and frontiers. 2nd ed. MP Doyle, LR Beuchat, TJ Montville, eds. Washington, DC: ASM Press; 2001:228–64.
2. Shandera WX, Johnston JM, Davis BR, Blake PA. Disease from infection with *Vibrio mimicus*, a newly recognized *Vibrio* species. *Ann Intern Med* 1983;99:169–71.
3. Food and Drug Administration. Fresh and frozen seafood: selecting and serving it safely. Silver Spring, MD: US Department of Health and Human Services, Food and Drug Administration; 2009. Available at <http://www.fda.gov/food/resourcesforyou/consumers/ucm077331.htm>. Accessed October 19, 2010.

## Announcement

### National Epilepsy Awareness Month — November 2010

November is National Epilepsy Awareness Month. Epilepsy, which affects approximately 2 million persons in the United States, is characterized by recurrent, unprovoked seizures (1). Delayed recognition of these seizures and subsequent inadequate treatment increases the risk for additional seizures, disability, decreased health-related quality of life, and, in rare instances, death (2–4). Although epilepsy can occur at any age, the condition is more likely to begin among children aged <2 years and adults aged >65 years (5). The number of cases among older adults is increasing as the U.S. population ages (3). A multistate study by CDC indicated that approximately 1% of adults have active epilepsy, and many might not be receiving the best available medical care (1).

“Get Seizure Smart,” this year’s theme for National Epilepsy Awareness Month, focuses on the importance of seizure recognition and first aid. During the month of November, the Epilepsy Foundation will launch an interactive website (<http://www.getseizuresmart.org>) that will provide educational materials and other resources to support this effort.

Many persons do not know how to respond appropriately to a person having a seizure. For example, although many law enforcement and emergency response personnel are able to respond successfully to readily recognizable forms of seizures and intervene appropriately, some might not recognize seizures in persons they encounter who appear to be confused, unable to communicate, or exhibit behaviors inappropriate to time and place (6). Such persons might not obey directives and might become involuntarily combative, resulting in inappropriate arrest, possible injury, and, in some cases, death (7,8).

The Epilepsy Foundation, in partnership with CDC, is continuing a national education and outreach program to educate and train law enforcement officers, police cadets, and emergency response personnel to increase their recognition of seizures and to protect the safety and rights of persons having seizures, while also ensuring the safety of first responders. The centerpiece of this effort is the First Responders Training Program, consisting of two modules. The first, the Law Enforcement Training

Curriculum, has reached approximately 55,000 law enforcement personnel through class and train-the-trainer sessions. It is available online (<http://www.train.org>) through the Public Health Foundation training network. The second, a module designed specifically for fire and emergency medical service personnel, is undergoing pilot testing by Epilepsy Foundation affiliates. It includes a facilitator’s guide, a participant manual, and a video, *A Guide to Seizure Management for Emergency Medical Responders*, all of which is available online at the same web address (<http://www.train.org>).

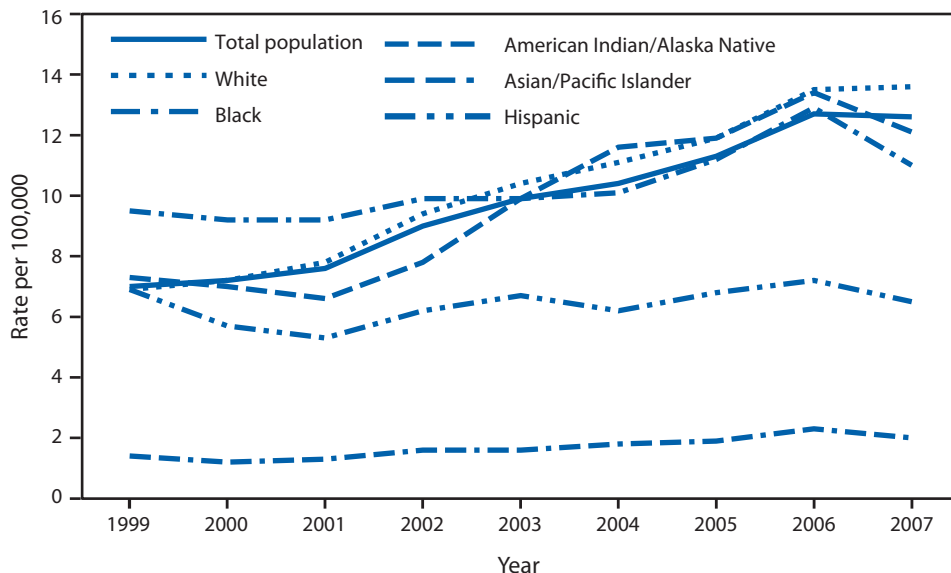
Additional information about epilepsy and the national program is available from the Epilepsy Foundation by telephone (800-332-1000) or online (<http://www.epilepsyfoundation.org>). Information in Spanish is available online (<http://www.fundacionparalaepilepsia.org>) or by telephone (866-748-8008).

#### References

1. CDC. Epilepsy surveillance among adults—19 states, Behavioral Risk Factor Surveillance System, 2005. *MMWR* 2008;57(No. SS-6).
2. Engel JR Jr. A greater role for surgical treatment of epilepsy: why and when? *Epilepsy Curr* 2003;3:37–40.
3. Begley CE, Famulari M, Annegers JF, et al. The cost of epilepsy in the United States: an estimate from population-based clinical and survey data. *Epilepsia* 2000;41:342–51.
4. Gilliam F. Optimizing health outcomes in active epilepsy. *Neurology* 2002;58(Suppl 5):S9–20.
5. Hirtz D, Thurman DJ, Gwinn-Hardy K, Mohamed M, Chaudhuri AR, Zalutsky R. How common are the “common” neurological disorders? *Neurology* 2007;68:326–37.
6. Epilepsy Foundation. Law enforcement/EMS response to seizures. Background: inappropriate response to seizures. Landover, MD: Epilepsy Foundation; 2010. Available at <http://www.epilepsyfoundation.org/about/professionals/emergency/inappropriateresponse.cfm>. Accessed October 25, 2010.
7. Protection & Advocacy, Inc. The lethal hazard of prone restraint: positional asphyxiation. Oakland, CA: Protection & Advocacy, Inc.; 2002. Available at <http://www.pai-ca.org/pubs/701801.pdf>. Accessed October 25, 2010.
8. Epilepsy Foundation. Law enforcement/EMS response to seizures. Summary of selected cases involving excessive force used by police and EMTs in responding to persons with seizures. Landover, MD: Epilepsy Foundation; 2008. Available at <http://www.epilepsyfoundation.org/about/professionals/emergency/restraintcases.cfm>. Accessed October 25, 2010.

## QuickStats

FROM THE NATIONAL CENTER FOR HEALTH STATISTICS

Rates of Drug-Induced Deaths,\* by Race/Ethnicity<sup>†</sup> — United States, 1999–2007

\* Age-adjusted rates for drug-induced deaths per 100,000 U.S. standard population (based on *International Classification of Diseases, 10th Revision* [ICD-10] codes D52.1, D59.0, D59.2, D61.1, D64.2, E06.4, E16.0, E23.1, E24.2, E27.3, E66.1, F11.0–F11.5, F11.7–F11.9, F12.0–F12.5, F12.7–F12.9, F13.0–F13.5, F13.7–F13.9, F14.0–F14.5, F14.7–F14.9, F15.0–F15.5, F15.7–F15.9, F16.0–F16.5, F16.7–F16.9, F17.0, F17.3–F17.5, F17.7–F17.9, F18.0–F18.5, F18.7–F18.9, F19.0–F19.5, F19.7–F19.9, G21.1, G24.0, G25.1, G25.4, G25.6, G44.4, G62.0, G72.0, I95.2, J70.2–J70.4, K85.3, L10.5, L27.0–L27.1, M10.2, M32.0, M80.4, M81.4, M83.5, M87.1, R50.2, R78.1–R78.5, X40–X44, X60–X64, X85, and Y10–Y14). Drug-induced deaths include deaths from poisoning, drug dependence, and conditions resulting from acute or chronic exposure to drugs. Drug-induced deaths exclude deaths from adverse events caused by drugs in therapeutic use (ICD-10 codes Y40–59), deaths indirectly related to drug use (e.g., motor vehicle crashes), and newborn deaths associated with the mother's drug use.

<sup>†</sup> Race and Hispanic ethnicity are reported separately on the death certificate. Persons of Hispanic ethnicity might be of any race. Hispanic decedents also are counted among the races shown.

During 1999–2007, age-adjusted rates for drug-induced deaths generally increased for each race group. The rate increased by 80.0% for the total population, 97.1% for the white population, 15.8% for the black population, 65.8% for American Indians/Alaska Natives, and 42.9% for Asians/Pacific Islanders. However, for the Hispanic population the rate was more stable, with a decline of 5.8%. During this period, Asians/Pacific Islanders had substantially lower rates than all other groups.

Source: Xu J, Kochanek KD, Murphy SL, Tejada-Vera B. Deaths: final data for 2007. *Natl Vital Stat Rep* 2010;58(19). Available at [http://www.cdc.gov/nchs/data/nvsr/nvsr58/nvsr58\\_19.pdf](http://www.cdc.gov/nchs/data/nvsr/nvsr58/nvsr58_19.pdf).



## Notifiable Diseases and Mortality Tables

TABLE I. Provisional cases of infrequently reported notifiable diseases (<1,000 cases reported during the preceding year) — United States, week ending October 23, 2010 (42nd week)\*

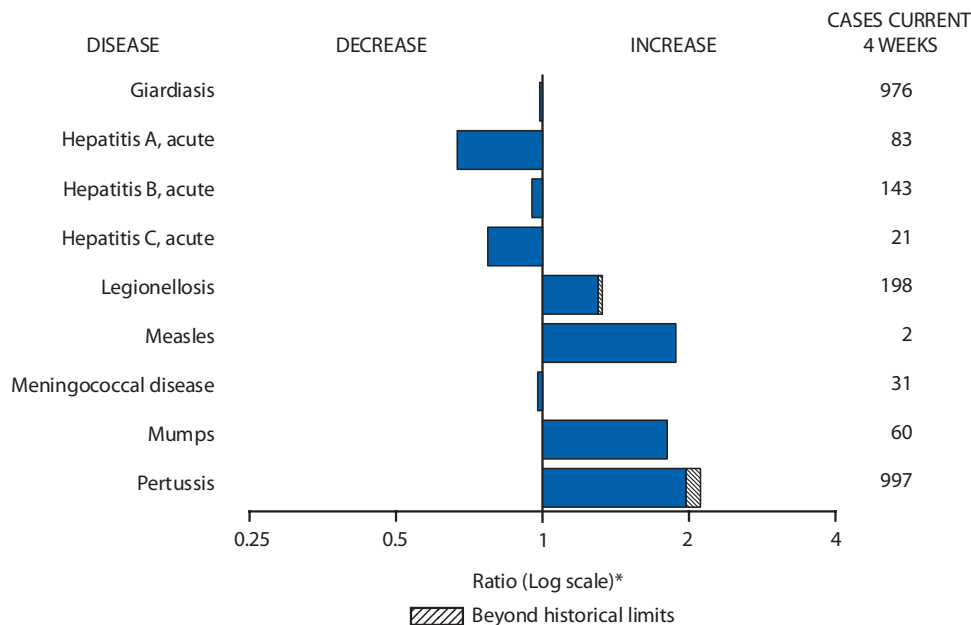
Disease	Current week	Cum 2010	5-year weekly average <sup>†</sup>	Total cases reported for previous years					States reporting cases during current week (No.)
				2009	2008	2007	2006	2005	
Anthrax	—	—	—	1	—	1	1	—	
Botulism, total	2	83	3	118	145	144	165	135	
foodborne	—	6	1	10	17	32	20	19	
infant	1	58	2	83	109	85	97	85	PA (1)
other (wound and unspecified)	1	19	1	25	19	27	48	31	WA (1)
Brucellosis	—	98	2	115	80	131	121	120	
Chancroid	—	32	0	28	25	23	33	17	
Cholera	—	5	0	10	5	7	9	8	
Cyclosporiasis <sup>§</sup>	2	149	1	141	139	93	137	543	FL (1), TN (1)
Diphtheria	—	—	—	—	—	—	—	—	
Domestic arboviral diseases <sup>§, ¶</sup> :									
California serogroup virus disease	—	55	1	55	62	55	67	80	
Eastern equine encephalitis virus disease	—	10	0	4	4	4	8	21	
Powassan virus disease	—	5	0	6	2	7	1	1	
St. Louis encephalitis virus disease	—	6	0	12	13	9	10	13	
Western equine encephalitis virus disease	—	—	—	—	—	—	—	—	
<i>Haemophilus influenzae</i> , ** invasive disease (age <5 yrs):									
serotype b	—	13	0	35	30	22	29	9	
nonsertotype b	—	137	3	236	244	199	175	135	
unknown serotype	17	199	3	178	163	180	179	217	PA (1), FL (2), CA (14)
Hansen disease <sup>§</sup>	—	35	2	103	80	101	66	87	
Hantavirus pulmonary syndrome <sup>§</sup>	—	16	0	20	18	32	40	26	
Hemolytic uremic syndrome, postdiarrheal <sup>§</sup>	5	174	6	242	330	292	288	221	MD (1), TN (2), CA (2)
HIV infection, pediatric (age <13 yrs) <sup>††</sup>	—	—	2	—	—	—	—	380	
Influenza-associated pediatric mortality <sup>§, §§</sup>	—	56	4	358	90	77	43	45	
Listeriosis <sup>¶¶</sup>	6	631	20	851	759	808	884	896	OH (1), MD (1), NC (1), FL (1), OK (1), WA (1)
Measles <sup>¶¶</sup>	—	56	0	71	140	43	55	66	
Meningococcal disease, invasive <sup>***</sup> :									
A, C, Y, and W-135	2	192	5	301	330	325	318	297	VA (1), CO (1)
serogroup B	2	89	2	174	188	167	193	156	WA (2)
other serogroup	—	7	0	23	38	35	32	27	
unknown serogroup	4	305	9	482	616	550	651	765	NY (1), MO (1), VA (1), CA (1)
Mumps	8	2,430	18	1,991	454	800	6,584	314	NY (1), OH (4), TX (2), HI (1)
Novel influenza A virus infections <sup>†††</sup>	—	1	0	43,774	2	4	NN	NN	
Plague	—	2	0	8	3	7	17	8	
Poliomyelitis, paralytic	—	—	—	1	—	—	—	1	
Polio virus Infection, nonparalytic <sup>§</sup>	—	—	—	—	—	—	NN	NN	
Psittacosis <sup>§</sup>	—	4	0	9	8	12	21	16	
Q fever, total <sup>§, §§§</sup>	—	97	2	114	120	171	169	136	
acute	—	74	1	94	106	—	—	—	
chronic	—	23	0	20	14	—	—	—	
Rabies, human	—	1	0	4	2	1	3	2	
Rubella <sup>¶¶¶</sup>	—	6	0	3	16	12	11	11	
Rubella, congenital syndrome	—	—	—	2	—	—	1	1	
SARS-CoV <sup>§, ****</sup>	—	—	—	—	—	—	—	—	
Smallpox <sup>§</sup>	—	—	—	—	—	—	—	—	
Streptococcal toxic-shock syndrome <sup>§</sup>	1	136	1	161	157	132	125	129	VT (1)
Syphilis, congenital (age <1 yr) <sup>††††</sup>	—	165	8	423	431	430	349	329	
Tetanus	—	6	1	18	19	28	41	27	
Toxic-shock syndrome (staphylococcal) <sup>§</sup>	—	58	1	74	71	92	101	90	
Trichinellosis	—	3	0	13	39	5	15	16	
Tularemia	—	83	2	93	123	137	95	154	
Typhoid fever	6	323	7	397	449	434	353	324	NY (1), PA (1), VA (1), NC (1), WA (1), CA (1)
Vancomycin-intermediate <i>Staphylococcus aureus</i> <sup>§</sup>	—	70	1	78	63	37	6	2	
Vancomycin-resistant <i>Staphylococcus aureus</i> <sup>§</sup>	—	1	0	1	—	2	1	3	
Vibriosis (noncholera <i>Vibrio</i> species infections) <sup>§</sup>	15	655	10	789	588	549	NN	NN	ME (1), MD (1), VA (3), GA (1), FL (3), WA (2), CA (4)
Viral hemorrhagic fever <sup>§§§§</sup>	—	1	—	NN	NN	NN	NN	NN	
Yellow fever	—	—	—	—	—	—	—	—	

See Table I footnotes on next page.

**TABLE I. (Continued) Provisional cases of infrequently reported notifiable diseases (<1,000 cases reported during the preceding year) — United States, week ending October 23, 2010 (42nd week)\***

—: No reported cases. N: Not reportable. NN: Not Nationally Notifiable Cum: Cumulative year-to-date counts.  
 \* Incidence data for reporting year 2010 is provisional, whereas data for 2005 through 2009 are finalized.  
 † Calculated by summing the incidence counts for the current week, the 2 weeks preceding the current week, and the 2 weeks following the current week, for a total of 5 preceding years. Additional information is available at <http://www.cdc.gov/ncphi/diss/nndss/phs/files/5yearweeklyaverage.pdf>.  
 ‡ Not reportable in all states. Data from states where the condition is not reportable are excluded from this table except starting in 2007 for the domestic arboviral diseases, STD data, TB data, and influenza-associated pediatric mortality, and in 2003 for SARS-CoV. Reporting exceptions are available at <http://www.cdc.gov/ncphi/diss/nndss/phs/infdic.htm>.  
 ¶ Includes both neuroinvasive and nonneuroinvasive. Updated weekly from reports to the Division of Vector-Borne Infectious Diseases, National Center for Zoonotic, Vector-Borne, and Enteric Diseases (ArboNET Surveillance). Data for West Nile virus are available in Table II.  
 \*\* Data for *H. influenzae* (all ages, all serotypes) are available in Table II.  
 †† Updated monthly from reports to the Division of HIV/AIDS Prevention, National Center for HIV/AIDS, Viral Hepatitis, STD, and TB Prevention. Implementation of HIV reporting influences the number of cases reported. Updates of pediatric HIV data have been temporarily suspended until upgrading of the national HIV/AIDS surveillance data management system is completed. Data for HIV/AIDS, when available, are displayed in Table IV, which appears quarterly.  
 ††† Updated weekly from reports to the Influenza Division, National Center for Immunization and Respiratory Diseases. Since April 26, 2009, a total of 286 influenza-associated pediatric deaths associated with 2009 influenza A (H1N1) virus infection have been reported. Since August 30, 2009, a total of 281 influenza-associated pediatric deaths occurring during the 2009–10 influenza season have been reported.  
 ¶¶ No measles cases were reported for the current week.  
 \*\*\* Data for meningococcal disease (all serogroups) are available in Table II.  
 †††† CDC discontinued reporting of individual confirmed and probable cases of 2009 pandemic influenza A (H1N1) virus infections on July 24, 2009. During 2009, four cases of human infection with novel influenza A viruses, different from the 2009 pandemic influenza A (H1N1) strain, were reported to CDC. The one case of novel influenza A virus infection reported to CDC during 2010 was identified as swine influenza A (H3N2) virus and is unrelated to 2009 pandemic influenza A (H1N1) virus. Total case counts for 2009 were provided by the Influenza Division, National Center for Immunization and Respiratory Diseases (NCIRD).  
 ††††† In 2009, Q fever acute and chronic reporting categories were recognized as a result of revisions to the Q fever case definition. Prior to that time, case counts were not differentiated with respect to acute and chronic Q fever cases.  
 ¶¶¶ No rubella cases were reported for the current week.  
 \*\*\*\* Updated weekly from reports to the Division of Viral and Rickettsial Diseases, National Center for Zoonotic, Vector-Borne, and Enteric Diseases.  
 ††††† Updated weekly from reports to the Division of STD Prevention, National Center for HIV/AIDS, Viral Hepatitis, STD, and TB Prevention.  
 †††††† There was one case of viral hemorrhagic fever reported during week 12. The one case report was confirmed as lassa fever. See Table II for dengue hemorrhagic fever.

**FIGURE I. Selected notifiable disease reports, United States, comparison of provisional 4-week totals October 23, 2010, with historical data**



\* Ratio of current 4-week total to mean of 15 4-week totals (from previous, comparable, and subsequent 4-week periods for the past 5 years). The point where the hatched area begins is based on the mean and two standard deviations of these 4-week totals.

**Notifiable Disease Data Team and 122 Cities Mortality Data Team**  
 Patsy A. Hall-Baker  
 Deborah A. Adams      Rosaline Dhara  
 Willie J. Anderson      Pearl C. Sharp  
 Michael S. Wodajo      Lenee Blanton

TABLE II. Provisional cases of selected notifiable diseases, United States, weeks ending October 23, 2010, and October 24, 2009 (42nd week)\*

Reporting area	<i>Chlamydia trachomatis</i> infection					Cryptosporidiosis				
	Current week	Previous 52 weeks		Cum 2010	Cum 2009	Current week	Previous 52 weeks		Cum 2010	Cum 2009
		Med	Max				Med	Max		
<b>United States</b>	14,906	23,446	26,182	957,262	1,015,701	69	123	330	6,355	6,213
<b>New England</b>	856	744	1,396	32,054	32,356	—	7	73	377	398
Connecticut	320	214	736	7,953	9,408	—	0	67	67	38
Maine†	—	50	75	1,996	1,940	—	1	7	70	44
Massachusetts	411	400	653	16,406	15,280	—	2	8	120	154
New Hampshire	44	41	114	1,948	1,754	—	1	5	46	71
Rhode Island†	58	65	120	2,745	3,010	—	0	2	13	21
Vermont†	23	23	51	1,006	964	—	1	5	61	70
<b>Mid. Atlantic</b>	4,478	3,290	4,619	137,626	128,070	7	15	37	672	706
New Jersey	445	483	691	20,597	19,982	—	0	1	—	46
New York (Upstate)	752	679	2,530	27,692	25,210	4	3	16	179	187
New York City	2,740	1,207	2,142	51,330	47,579	—	1	5	72	72
Pennsylvania	541	894	1,092	38,007	35,299	3	9	26	421	401
<b>E.N. Central</b>	815	3,493	4,127	138,819	163,661	11	29	120	1,710	1,469
Illinois	23	785	1,225	28,238	50,080	—	3	20	216	137
Indiana	—	348	796	15,401	18,742	—	4	10	133	244
Michigan	492	900	1,420	38,755	37,620	1	5	18	274	238
Ohio	165	960	1,080	39,318	40,019	9	7	24	400	325
Wisconsin	135	415	504	17,107	17,200	1	9	55	687	525
<b>W.N. Central</b>	480	1,334	1,565	54,592	58,054	5	23	82	1,159	950
Iowa	8	188	265	8,058	7,891	—	4	23	292	180
Kansas	26	186	235	7,596	8,825	—	2	9	118	89
Minnesota	—	274	331	10,695	11,839	—	0	18	98	288
Missouri	282	498	599	20,430	21,201	2	4	30	333	161
Nebraska†	143	93	237	3,972	4,411	3	2	26	209	102
North Dakota	—	34	89	1,375	1,443	—	0	18	28	11
South Dakota	21	62	77	2,466	2,444	—	2	6	81	119
<b>S. Atlantic</b>	3,152	4,542	5,681	187,562	205,973	15	18	51	845	944
Delaware	68	85	220	3,555	3,839	—	0	2	7	8
District of Columbia	—	93	177	3,904	5,591	—	0	1	2	6
Florida	660	1,433	1,712	60,739	60,223	7	7	19	314	377
Georgia	346	376	1,229	16,638	33,240	2	5	31	249	293
Maryland†	—	459	1,031	18,571	18,211	1	1	3	31	36
North Carolina	548	785	1,562	33,479	34,148	3	1	12	69	97
South Carolina†	742	523	804	22,332	22,299	1	1	8	77	50
Virginia†	695	596	902	25,289	25,466	1	2	8	81	63
West Virginia	93	70	137	3,055	2,956	—	0	3	15	14
<b>E.S. Central</b>	944	1,735	2,415	71,461	76,264	2	4	19	259	189
Alabama†	—	495	748	20,782	21,812	—	2	11	120	57
Kentucky	204	288	642	12,103	10,162	1	1	6	71	53
Mississippi	458	384	780	15,528	19,655	1	0	3	18	16
Tennessee†	282	564	728	23,048	24,635	—	1	5	50	63
<b>W.S. Central</b>	1,306	2,954	4,578	126,671	133,832	8	8	39	362	480
Arkansas†	328	250	392	9,726	11,867	—	1	3	30	47
Louisiana	682	228	1,076	11,660	23,463	—	1	5	49	46
Oklahoma	223	258	1,374	12,518	11,858	3	1	8	74	108
Texas†	73	2,189	3,200	92,767	86,644	5	4	30	209	279
<b>Mountain</b>	959	1,525	1,904	61,253	64,760	8	10	28	466	488
Arizona	300	498	713	20,507	21,329	—	1	3	31	29
Colorado	211	372	617	14,372	15,718	4	2	8	115	124
Idaho†	109	72	200	3,280	2,863	—	2	6	81	79
Montana†	16	60	79	2,445	2,466	3	1	4	43	49
Nevada†	135	170	337	7,705	8,339	1	0	6	31	21
New Mexico†	116	173	453	6,386	7,433	—	2	11	98	130
Utah	65	119	176	4,981	5,019	—	1	4	54	36
Wyoming†	7	37	79	1,577	1,593	—	0	2	13	20
<b>Pacific</b>	1,916	3,646	5,350	147,224	152,731	13	12	28	505	589
Alaska	—	111	148	4,702	4,312	—	0	1	4	6
California	1,519	2,771	4,406	113,503	116,762	7	7	19	289	345
Hawaii	—	113	158	4,676	4,988	—	0	0	—	1
Oregon	127	208	468	8,884	8,921	1	3	13	143	165
Washington	270	387	497	15,459	17,748	5	1	8	69	72
<b>Territories</b>										
American Samoa	—	0	0	—	—	N	0	0	N	N
C.N.M.I.	—	—	—	—	—	—	—	—	—	—
Guam	—	4	31	232	304	—	0	0	—	—
Puerto Rico	72	92	265	4,285	6,099	N	0	0	N	N
U.S. Virgin Islands	—	9	29	323	424	—	0	0	—	—

C.N.M.I.: Commonwealth of Northern Mariana Islands.

U: Unavailable. —: No reported cases. N: Not reportable. NN: Not Nationally Notifiable. Cum: Cumulative year-to-date counts. Med: Median. Max: Maximum.

\* Incidence data for reporting year 2010 is provisional. Data for HIV/AIDS, AIDS, and TB, when available, are displayed in Table IV, which appears quarterly.

† Contains data reported through the National Electronic Disease Surveillance System (NEDSS).

TABLE II. (Continued) Provisional cases of selected notifiable diseases, United States, weeks ending October 23, 2010, and October 24, 2009 (42nd week)\*

Reporting area	Dengue Virus Infection									
	Dengue Fever <sup>†</sup>					Dengue Hemorrhagic Fever <sup>‡</sup>				
	Current week	Previous 52 weeks		Cum 2010	Cum 2009	Current week	Previous 52 weeks		Cum 2010	Cum 2009
	Med	Max				Med	Max			
<b>United States</b>	—	5	30	355	NN	—	0	1	4	NN
<b>New England</b>	—	0	2	4	NN	—	0	0	—	NN
Connecticut	—	0	0	—	NN	—	0	0	—	NN
Maine <sup>¶</sup>	—	0	2	3	NN	—	0	0	—	NN
Massachusetts	—	0	0	—	NN	—	0	0	—	NN
New Hampshire	—	0	0	—	NN	—	0	0	—	NN
Rhode Island <sup>¶</sup>	—	0	0	—	NN	—	0	0	—	NN
Vermont <sup>¶</sup>	—	0	1	1	NN	—	0	0	—	NN
<b>Mid. Atlantic</b>	—	0	9	74	NN	—	0	0	—	NN
New Jersey	—	0	0	—	NN	—	0	0	—	NN
New York (Upstate)	—	0	0	—	NN	—	0	0	—	NN
New York City	—	0	7	62	NN	—	0	0	—	NN
Pennsylvania	—	0	2	12	NN	—	0	0	—	NN
<b>E.N. Central</b>	—	0	5	37	NN	—	0	1	1	NN
Illinois	—	0	0	—	NN	—	0	0	—	NN
Indiana	—	0	2	10	NN	—	0	0	—	NN
Michigan	—	0	2	8	NN	—	0	0	—	NN
Ohio	—	0	2	14	NN	—	0	0	—	NN
Wisconsin	—	0	2	5	NN	—	0	1	1	NN
<b>W.N. Central</b>	—	0	2	17	NN	—	0	0	—	NN
Iowa	—	0	1	2	NN	—	0	0	—	NN
Kansas	—	0	1	1	NN	—	0	0	—	NN
Minnesota	—	0	2	13	NN	—	0	0	—	NN
Missouri	—	0	0	—	NN	—	0	0	—	NN
Nebraska <sup>¶</sup>	—	0	0	—	NN	—	0	0	—	NN
North Dakota	—	0	1	1	NN	—	0	0	—	NN
South Dakota	—	0	0	—	NN	—	0	0	—	NN
<b>S. Atlantic</b>	—	1	16	178	NN	—	0	1	2	NN
Delaware	—	0	0	—	NN	—	0	0	—	NN
District of Columbia	—	0	0	—	NN	—	0	0	—	NN
Florida	—	1	14	154	NN	—	0	1	2	NN
Georgia	—	0	2	9	NN	—	0	0	—	NN
Maryland <sup>¶</sup>	—	0	0	—	NN	—	0	0	—	NN
North Carolina	—	0	1	4	NN	—	0	0	—	NN
South Carolina <sup>¶</sup>	—	0	3	9	NN	—	0	0	—	NN
Virginia <sup>¶</sup>	—	0	0	—	NN	—	0	0	—	NN
West Virginia	—	0	1	2	NN	—	0	0	—	NN
<b>E.S. Central</b>	—	0	2	5	NN	—	0	0	—	NN
Alabama <sup>¶</sup>	—	0	2	2	NN	—	0	0	—	NN
Kentucky	—	0	1	1	NN	—	0	0	—	NN
Mississippi	—	0	1	1	NN	—	0	0	—	NN
Tennessee <sup>¶</sup>	—	0	1	1	NN	—	0	0	—	NN
<b>W.S. Central</b>	—	0	1	4	NN	—	0	1	1	NN
Arkansas <sup>¶</sup>	—	0	0	—	NN	—	0	1	1	NN
Louisiana	—	0	0	—	NN	—	0	0	—	NN
Oklahoma	—	0	1	4	NN	—	0	0	—	NN
Texas <sup>¶</sup>	—	0	0	—	NN	—	0	0	—	NN
<b>Mountain</b>	—	0	2	13	NN	—	0	0	—	NN
Arizona	—	0	1	4	NN	—	0	0	—	NN
Colorado	—	0	0	—	NN	—	0	0	—	NN
Idaho <sup>¶</sup>	—	0	1	2	NN	—	0	0	—	NN
Montana <sup>¶</sup>	—	0	1	2	NN	—	0	0	—	NN
Nevada <sup>¶</sup>	—	0	1	4	NN	—	0	0	—	NN
New Mexico <sup>¶</sup>	—	0	1	1	NN	—	0	0	—	NN
Utah	—	0	0	—	NN	—	0	0	—	NN
Wyoming <sup>¶</sup>	—	0	0	—	NN	—	0	0	—	NN
<b>Pacific</b>	—	0	5	23	NN	—	0	0	—	NN
Alaska	—	0	0	—	NN	—	0	0	—	NN
California	—	0	5	11	NN	—	0	0	—	NN
Hawaii	—	0	0	—	NN	—	0	0	—	NN
Oregon	—	0	0	—	NN	—	0	0	—	NN
Washington	—	0	2	12	NN	—	0	0	—	NN
<b>Territories</b>										
American Samoa	—	0	0	—	NN	—	0	0	—	NN
C.N.M.I.	—	—	—	—	NN	—	—	—	—	NN
Guam	—	0	0	—	NN	—	0	0	—	NN
Puerto Rico	—	94	534	8,405	NN	—	0	3	31	NN
U.S. Virgin Islands	—	0	0	—	NN	—	0	0	—	NN

C.N.M.I.: Commonwealth of Northern Mariana Islands.

U: Unavailable. —: No reported cases. N: Not reportable. NN: Not Nationally Notifiable. Cum: Cumulative year-to-date counts. Med: Median. Max: Maximum.

\* Incidence data for reporting year 2010 is provisional.

† Dengue Fever includes cases that meet criteria for Dengue Fever with hemorrhage, other clinical, and unknown case classifications.

‡ DHF includes cases that meet criteria for dengue shock syndrome (DSS), a more severe form of DHF.

¶ Contains data reported through the National Electronic Disease Surveillance System (NEDSS).

MMWR Morbidity and Mortality Weekly Report

TABLE II. (Continued) Provisional cases of selected notifiable diseases, United States, weeks ending October 23, 2010, and October 24, 2009 (42nd week)\*

Reporting area	Ehrlichiosis/Anaplasmosis†														
	<i>Ehrlichia chaffeensis</i>					<i>Anaplasma phagocytophilum</i>					Undetermined				
	Current week	Previous 52 weeks		Cum 2010	Cum 2009	Current week	Previous 52 weeks		Cum 2010	Cum 2009	Current week	Previous 52 weeks		Cum 2010	Cum 2009
	Med	Max				Med	Max				Med	Max			
<b>United States</b>	5	10	181	523	840	5	11	309	633	796	—	2	35	92	155
<b>New England</b>	—	0	3	3	45	—	2	8	68	234	—	0	2	7	2
Connecticut	—	0	0	—	—	—	0	5	18	17	—	0	2	5	—
Maine§	—	0	1	2	3	—	0	2	14	12	—	0	0	—	—
Massachusetts	—	0	0	—	9	—	0	4	—	88	—	0	0	—	—
New Hampshire	—	0	1	1	4	—	0	3	12	16	—	0	1	2	1
Rhode Island§	—	0	2	—	28	—	0	7	24	101	—	0	0	—	1
Vermont§	—	0	0	—	1	—	0	0	—	—	—	0	0	—	—
<b>Mid. Atlantic</b>	—	1	15	43	172	4	3	17	171	274	—	0	2	4	44
New Jersey	—	0	3	—	94	—	0	2	1	65	—	0	0	—	—
New York (Upstate)	—	0	15	25	47	4	2	17	167	200	—	0	1	4	6
New York City	—	0	3	17	9	—	0	1	3	8	—	0	0	—	1
Pennsylvania	—	0	5	1	22	—	0	1	—	1	—	0	1	—	37
<b>E.N. Central</b>	—	0	4	29	82	—	2	37	313	260	—	1	6	57	66
Illinois	—	0	2	12	33	—	0	1	2	6	—	0	2	4	3
Indiana	—	0	0	—	—	—	0	0	—	—	—	0	3	29	36
Michigan	—	0	1	2	5	—	0	0	—	—	—	0	1	3	—
Ohio	—	0	3	6	12	—	0	1	2	1	—	0	0	—	2
Wisconsin	—	0	1	9	32	—	2	37	309	253	—	0	3	21	25
<b>W.N. Central</b>	—	1	13	115	148	—	0	261	10	7	—	0	30	11	16
Iowa	—	0	0	—	—	—	0	0	—	—	—	0	0	—	—
Kansas	—	0	1	6	6	—	0	0	—	1	—	0	0	—	—
Minnesota	—	0	6	—	1	—	0	261	—	3	—	0	30	—	3
Missouri	—	1	13	107	139	—	0	3	10	2	—	0	3	11	13
Nebraska§	—	0	1	2	2	—	0	0	—	1	—	0	0	—	—
North Dakota	—	0	0	—	—	—	0	0	—	—	—	0	0	—	—
South Dakota	—	0	0	—	—	—	0	0	—	—	—	0	0	—	—
<b>S. Atlantic</b>	5	4	19	230	235	—	1	7	51	15	—	0	1	6	2
Delaware	—	0	3	17	20	—	0	1	4	2	—	0	0	—	—
District of Columbia	—	0	0	—	—	—	0	0	—	—	—	0	0	—	—
Florida	—	0	2	8	10	—	0	1	3	3	—	0	0	—	—
Georgia	—	0	4	19	18	—	0	1	1	1	—	0	1	1	—
Maryland§	—	0	3	22	37	—	0	2	12	3	—	0	1	2	—
North Carolina	5	1	13	96	60	—	0	4	19	3	—	0	0	—	—
South Carolina§	—	0	2	3	10	—	0	1	1	—	—	0	0	—	—
Virginia§	—	1	13	65	79	—	0	2	11	3	—	0	1	3	2
West Virginia	—	0	0	—	1	—	0	0	—	—	—	0	1	—	—
<b>E.S. Central</b>	—	1	10	82	125	—	0	2	17	3	—	0	1	6	24
Alabama§	—	0	3	10	7	—	0	2	7	1	—	0	0	—	—
Kentucky	—	0	2	14	10	—	0	0	—	—	—	0	0	—	—
Mississippi	—	0	1	3	6	—	0	1	1	—	—	0	0	—	—
Tennessee§	—	1	6	55	102	—	0	2	9	2	—	0	1	6	24
<b>W.S. Central</b>	—	0	141	20	30	1	0	23	3	1	—	0	1	1	—
Arkansas§	—	0	34	2	4	—	0	6	—	—	—	0	0	—	—
Louisiana	—	0	1	1	—	—	0	0	—	—	—	0	0	—	—
Oklahoma	—	0	105	14	24	—	0	16	2	1	—	0	0	—	—
Texas§	—	0	2	3	2	1	0	1	1	—	—	0	1	1	—
<b>Mountain</b>	—	0	0	—	—	—	0	0	—	—	—	0	0	—	1
Arizona	—	0	0	—	—	—	0	0	—	—	—	0	0	—	1
Colorado	—	0	0	—	—	—	0	0	—	—	—	0	0	—	—
Idaho§	—	0	0	—	—	—	0	0	—	—	—	0	0	—	—
Montana§	—	0	0	—	—	—	0	0	—	—	—	0	0	—	—
Nevada§	—	0	0	—	—	—	0	0	—	—	—	0	0	—	—
New Mexico§	—	0	0	—	—	—	0	0	—	—	—	0	0	—	—
Utah	—	0	0	—	—	—	0	0	—	—	—	0	0	—	—
Wyoming§	—	0	0	—	—	—	0	0	—	—	—	0	0	—	—
<b>Pacific</b>	—	0	1	1	3	—	0	0	—	2	—	0	1	—	—
Alaska	—	0	0	—	—	—	0	0	—	—	—	0	0	—	—
California	—	0	1	1	3	—	0	0	—	2	—	0	1	—	—
Hawaii	—	0	0	—	—	—	0	0	—	—	—	0	0	—	—
Oregon	—	0	0	—	—	—	0	0	—	—	—	0	0	—	—
Washington	—	0	0	—	—	—	0	0	—	—	—	0	0	—	—
<b>Territories</b>															
American Samoa	—	0	0	—	—	—	0	0	—	—	—	0	0	—	—
C.N.M.I.	—	—	—	—	—	—	—	—	—	—	—	—	—	—	—
Guam	—	0	0	—	—	—	0	0	—	—	—	0	0	—	—
Puerto Rico	—	0	0	—	—	—	0	0	—	—	—	0	0	—	—
U.S. Virgin Islands	—	0	0	—	—	—	0	0	—	—	—	0	0	—	—

C.N.M.I.: Commonwealth of Northern Mariana Islands.

U: Unavailable. —: No reported cases. N: Not reportable. NN: Not Nationally Notifiable. Cum: Cumulative year-to-date counts. Med: Median. Max: Maximum.

\* Incidence data for reporting year 2010 is provisional.

† Cumulative total *E. ewingii* cases reported for year 2010 = 10.

§ Contains data reported through the National Electronic Disease Surveillance System (NEDSS).

MMWR Morbidity and Mortality Weekly Report

TABLE II. (Continued) Provisional cases of selected notifiable diseases, United States, weeks ending October 23, 2010, and October 24, 2009 (42nd week)\*

Reporting area	Giardiasis				Gonorrhea				Haemophilus influenzae, invasive† All ages, all serotypes						
	Current week	Previous 52 weeks		Cum 2010	Cum 2009	Current week	Previous 52 weeks		Cum 2010	Cum 2009	Current week	Previous 52 weeks		Cum 2010	Cum 2009
		Med	Max				Med	Max				Med	Max		
<b>United States</b>	263	344	666	14,411	15,392	3,549	5,429	6,326	223,251	247,941	41	59	171	2,333	2,326
<b>New England</b>	10	31	53	1,216	1,456	91	103	196	4,257	3,961	2	3	21	132	156
Connecticut	—	5	13	236	246	14	42	169	1,794	1,908	2	0	15	30	42
Maine <sup>§</sup>	5	4	12	177	181	—	3	11	136	110	—	0	2	10	18
Massachusetts	—	12	20	463	626	58	45	81	1,910	1,552	—	2	8	65	75
New Hampshire	1	3	8	120	175	5	3	7	124	85	—	0	2	9	10
Rhode Island <sup>§</sup>	—	1	7	60	52	14	5	14	246	270	—	0	2	11	7
Vermont <sup>§</sup>	4	4	10	160	176	—	0	17	47	36	—	0	1	7	4
<b>Mid. Atlantic</b>	39	60	103	2,468	2,852	1,004	676	941	28,908	25,795	3	11	34	447	473
New Jersey	—	5	13	207	360	116	102	161	4,465	3,919	—	2	7	75	106
New York (Upstate)	23	22	84	922	1,086	154	103	422	4,563	4,752	—	3	20	118	119
New York City	5	16	33	727	698	549	228	394	10,021	8,955	—	2	6	86	59
Pennsylvania	11	14	25	612	708	185	229	347	9,859	8,169	3	3	9	168	189
<b>E.N. Central</b>	35	53	78	2,361	2,428	250	927	1,260	37,956	52,432	5	10	20	398	365
Illinois	—	12	24	483	527	12	185	380	6,571	16,645	—	3	9	118	137
Indiana	—	5	13	191	244	—	94	221	4,322	6,053	—	1	6	69	66
Michigan	3	13	23	564	554	134	243	471	10,651	12,340	1	0	4	27	18
Ohio	29	16	24	706	676	60	315	372	12,646	13,115	4	2	6	99	82
Wisconsin	3	8	29	417	427	44	93	155	3,766	4,279	—	2	5	85	62
<b>W.N. Central</b>	14	25	165	1,179	1,325	128	273	357	11,158	12,246	2	3	24	134	133
Iowa	4	5	11	238	249	2	32	52	1,366	1,357	—	0	1	1	—
Kansas	1	4	10	181	130	8	37	83	1,548	2,104	—	0	2	12	13
Minnesota	—	0	135	136	250	—	40	62	1,515	1,907	—	0	17	25	47
Missouri	7	8	25	349	437	72	124	172	5,356	5,366	1	1	6	67	46
Nebraska <sup>§</sup>	2	4	9	181	146	46	22	50	959	1,119	1	0	2	19	21
North Dakota	—	0	7	25	20	—	2	11	94	105	—	0	4	10	6
South Dakota	—	1	7	69	93	—	6	17	320	288	—	0	0	—	—
<b>S. Atlantic</b>	66	74	143	3,085	2,995	933	1,307	1,651	54,354	61,741	8	14	27	623	637
Delaware	—	0	5	25	22	19	18	48	815	786	—	0	1	5	3
District of Columbia	—	1	5	31	60	—	37	65	1,478	2,183	—	0	1	2	4
Florida	51	40	87	1,766	1,571	184	380	486	16,358	17,392	5	3	9	153	190
Georgia	—	11	51	485	612	116	138	421	5,671	11,344	2	3	9	143	127
Maryland <sup>§</sup>	4	5	11	216	230	—	132	237	5,346	4,959	—	1	6	55	76
North Carolina	N	0	0	N	N	221	258	596	11,264	11,629	1	2	9	106	78
South Carolina <sup>§</sup>	1	2	9	120	90	202	153	233	6,746	6,995	—	2	7	69	60
Virginia <sup>§</sup>	10	9	36	409	369	176	160	271	6,251	6,041	—	2	4	70	73
West Virginia	—	1	5	33	41	15	9	20	425	412	—	0	5	20	26
<b>E.S. Central</b>	1	5	15	207	343	266	479	698	19,380	22,002	1	3	12	140	139
Alabama <sup>§</sup>	—	4	9	153	166	—	145	217	6,002	6,243	—	0	3	21	34
Kentucky	N	0	0	N	N	58	76	156	3,156	2,998	1	0	2	29	19
Mississippi	N	0	0	N	N	139	109	216	4,395	6,124	—	0	2	10	7
Tennessee <sup>§</sup>	1	1	10	54	177	69	145	196	5,827	6,637	—	2	10	80	79
<b>W.S. Central</b>	—	8	16	308	425	380	782	1,283	34,208	39,193	1	2	20	107	99
Arkansas <sup>§</sup>	—	2	9	106	121	101	75	133	2,993	3,682	—	0	3	14	15
Louisiana	—	3	9	139	172	189	68	441	3,362	7,623	—	0	3	21	17
Oklahoma	—	2	7	63	132	73	79	359	3,685	3,765	1	1	15	64	63
Texas <sup>§</sup>	N	0	0	N	N	17	571	964	24,168	24,123	—	0	2	8	4
<b>Mountain</b>	28	30	49	1,323	1,387	86	179	262	7,252	7,615	1	5	15	239	203
Arizona	2	3	8	130	171	32	63	109	2,413	2,532	—	2	10	90	65
Colorado	18	13	27	569	404	15	53	94	2,156	2,297	1	1	5	67	59
Idaho <sup>§</sup>	2	4	9	171	168	5	2	6	96	82	—	0	2	14	3
Montana <sup>§</sup>	3	2	7	87	118	—	2	6	86	67	—	0	1	2	1
Nevada <sup>§</sup>	2	1	11	82	98	18	28	94	1,361	1,448	—	0	2	6	16
New Mexico <sup>§</sup>	—	2	5	76	106	15	20	41	854	873	—	1	5	35	27
Utah	—	4	11	175	265	1	6	15	258	256	—	0	4	19	29
Wyoming <sup>§</sup>	1	1	5	33	57	—	1	4	28	60	—	0	2	6	3
<b>Pacific</b>	70	53	133	2,264	2,181	411	594	809	25,778	22,956	18	2	9	113	121
Alaska	—	2	6	81	95	—	23	37	1,000	788	—	0	2	19	15
California	46	33	61	1,418	1,413	361	488	691	21,320	18,906	18	0	4	30	39
Hawaii	—	0	4	25	18	—	14	25	598	518	—	0	2	7	28
Oregon	3	9	24	398	340	13	19	43	794	872	—	1	5	53	36
Washington	21	8	75	342	315	37	50	69	2,066	1,872	—	0	4	4	3
<b>Territories</b>															
American Samoa	—	0	0	—	—	—	0	0	—	—	—	0	0	—	—
C.N.M.I.	—	—	—	—	—	—	—	—	—	—	—	—	—	—	—
Guam	—	0	1	2	3	—	0	4	28	19	—	0	0	—	—
Puerto Rico	—	1	8	57	141	10	5	14	238	200	—	0	1	1	4
U.S. Virgin Islands	—	0	0	—	—	—	2	7	78	103	—	0	0	—	—

C.N.M.I.: Commonwealth of Northern Mariana Islands.

U: Unavailable. —: No reported cases. N: Not reportable. NN: Not Nationally Notifiable. Cum: Cumulative year-to-date counts. Med: Median. Max: Maximum.

\* Incidence data for reporting year 2010 is provisional.

† Data for *H. influenzae* (age <5 yrs for serotype b, nonserotype b, and unknown serotype) are available in Table I.

§ Contains data reported through the National Electronic Disease Surveillance System (NEDSS).

MMWR Morbidity and Mortality Weekly Report

TABLE II. (Continued) Provisional cases of selected notifiable diseases, United States, weeks ending October 23, 2010, and October 24, 2009 (42nd week)\*

Reporting area	Hepatitis (viral, acute), by type														
	A					B					C				
	Current week	Previous 52 weeks		Cum 2010	Cum 2009	Current week	Previous 52 weeks		Cum 2010	Cum 2009	Current week	Previous 52 weeks		Cum 2010	Cum 2009
	Med	Max				Med	Max				Med	Max			
<b>United States</b>	24	30	69	1,230	1,629	41	62	204	2,491	2,656	5	15	44	654	597
<b>New England</b>	1	2	5	77	95	1	1	5	43	46	—	1	3	29	54
Connecticut	1	0	3	24	18	—	0	2	15	13	—	0	3	19	41
Maine†	—	0	1	7	1	1	0	2	12	12	—	0	1	—	2
Massachusetts	—	1	4	36	60	—	0	2	8	17	—	0	1	9	10
New Hampshire	—	0	1	2	7	—	0	2	6	4	N	0	0	N	N
Rhode Island†	—	0	4	8	7	U	0	0	U	U	U	0	0	U	U
Vermont†	—	0	0	—	2	—	0	1	2	—	—	0	1	1	1
<b>Mid. Atlantic</b>	1	4	10	167	232	2	5	10	233	278	1	2	6	95	83
New Jersey	—	0	3	12	60	1	1	5	57	83	—	0	2	21	5
New York (Upstate)	1	1	4	52	40	—	1	6	41	46	—	1	4	48	40
New York City	—	1	5	59	72	—	2	4	72	57	—	0	0	—	5
Pennsylvania	—	1	4	44	60	1	1	5	63	92	1	0	3	26	33
<b>E.N. Central</b>	1	4	8	172	249	1	9	17	378	360	—	2	10	100	72
Illinois	—	1	3	40	115	—	2	5	70	100	—	0	1	1	4
Indiana	—	0	2	15	16	—	1	5	47	58	—	0	2	21	15
Michigan	—	1	4	52	58	1	3	6	101	109	—	1	6	62	26
Ohio	1	0	5	41	34	—	2	6	80	73	—	0	1	9	24
Wisconsin	—	0	3	24	26	—	1	8	80	20	—	0	2	7	3
<b>W.N. Central</b>	—	1	13	65	95	—	2	15	95	117	—	0	11	16	18
Iowa	—	0	3	7	32	—	0	2	12	29	—	0	1	—	10
Kansas	—	0	3	11	7	—	0	2	6	6	—	0	1	1	1
Minnesota	—	0	12	14	15	—	0	13	7	20	—	0	9	6	3
Missouri	—	0	2	20	20	—	1	3	57	40	—	0	1	6	—
Nebraska†	—	0	4	12	18	—	0	2	12	19	—	0	1	3	2
North Dakota	—	0	1	—	—	—	0	0	—	—	—	0	1	—	1
South Dakota	—	0	1	1	3	—	0	1	1	3	—	0	0	—	1
<b>S. Atlantic</b>	4	8	14	288	353	9	17	40	720	730	—	4	8	138	136
Delaware	—	0	1	7	3	—	1	2	22	27	U	0	0	U	U
District of Columbia	—	0	1	1	1	—	0	1	3	10	—	0	1	2	1
Florida	1	3	7	114	149	3	6	12	246	235	—	1	6	44	35
Georgia	1	1	3	34	40	1	3	7	121	125	—	0	2	7	30
Maryland†	—	0	4	22	42	1	1	6	57	63	—	0	2	21	20
North Carolina	1	1	5	45	35	—	1	16	83	94	—	0	3	36	20
South Carolina†	—	0	3	22	51	—	1	4	48	43	—	0	1	1	1
Virginia†	1	1	6	41	29	2	1	14	79	77	—	0	2	11	8
West Virginia	—	0	2	2	3	2	0	14	61	56	—	0	5	16	21
<b>E.S. Central</b>	—	1	3	33	34	3	7	13	288	275	—	3	7	120	81
Alabama†	—	0	1	6	9	—	1	5	57	74	—	0	1	5	7
Kentucky	—	0	2	13	8	—	2	8	100	66	—	2	5	82	48
Mississippi	—	0	1	2	8	—	1	3	29	27	U	0	0	U	U
Tennessee†	—	0	2	12	9	3	2	8	102	108	—	1	4	33	26
<b>W.S. Central</b>	3	2	19	106	161	13	9	109	388	464	3	1	14	63	47
Arkansas†	—	0	3	—	8	—	0	4	32	54	—	0	0	—	2
Louisiana	—	0	2	7	5	—	1	4	40	59	—	0	1	7	7
Oklahoma	1	0	3	1	3	3	2	19	79	80	3	0	12	26	12
Texas†	2	2	18	98	145	10	5	87	237	271	—	1	3	30	26
<b>Mountain</b>	—	3	8	118	138	—	2	8	96	114	1	1	5	42	41
Arizona	—	1	5	56	58	—	0	2	25	39	U	0	0	U	U
Colorado	—	1	3	26	45	—	0	3	21	22	—	0	2	7	24
Idaho†	—	0	2	6	4	—	0	1	6	11	—	0	2	9	4
Montana†	—	0	1	4	6	—	0	1	1	1	1	0	0	1	1
Nevada†	—	0	2	12	11	—	0	3	33	27	—	0	1	4	3
New Mexico†	—	0	1	3	7	—	0	1	4	6	—	0	2	11	5
Utah	—	0	1	8	5	—	0	1	5	4	—	0	2	10	4
Wyoming†	—	0	3	3	2	—	0	1	1	4	—	0	0	—	—
<b>Pacific</b>	14	5	16	204	272	12	6	20	250	272	—	1	6	51	65
Alaska	—	0	1	1	2	—	0	1	3	2	U	0	2	U	U
California	14	4	15	167	216	11	4	17	173	194	—	0	4	20	36
Hawaii	—	0	2	3	8	—	0	1	1	5	U	0	0	U	U
Oregon	—	0	2	17	13	—	1	4	33	34	—	0	3	13	15
Washington	—	0	2	16	33	1	1	4	40	37	—	0	6	18	14
<b>Territories</b>															
American Samoa	—	0	0	—	—	—	0	0	—	—	—	0	0	—	—
C.N.M.I.	—	—	—	—	—	—	—	—	—	—	—	—	—	—	—
Guam	—	0	6	16	4	—	1	6	35	50	—	0	6	28	42
Puerto Rico	—	0	1	12	21	—	0	2	16	29	—	0	0	—	—
U.S. Virgin Islands	—	0	0	—	—	—	0	0	—	—	—	0	0	—	—

C.N.M.I.: Commonwealth of Northern Mariana Islands.

U: Unavailable. —: No reported cases. N: Not reportable. NN: Not Nationally Notifiable. Cum: Cumulative year-to-date counts. Med: Median. Max: Maximum.

\* Incidence data for reporting year 2010 is provisional.

† Contains data reported through the National Electronic Disease Surveillance System (NEDSS).

TABLE II. (Continued) Provisional cases of selected notifiable diseases, United States, weeks ending October 23, 2010, and October 24, 2009 (42nd week)\*

Reporting area	Legionellosis					Lyme disease					Malaria				
	Current week	Previous 52 weeks		Cum 2010	Cum 2009	Current week	Previous 52 weeks		Cum 2010	Cum 2009	Current week	Previous 52 weeks		Cum 2010	Cum 2009
		Med	Max				Med	Max				Med	Max		
<b>United States</b>	72	58	112	2,522	2,850	150	410	2,336	22,170	32,760	21	26	89	1,161	1,156
<b>New England</b>	6	3	13	172	173	16	121	423	6,181	11,296	—	1	4	57	53
Connecticut	6	0	4	38	48	—	41	200	2,218	3,797	—	0	1	1	5
Maine†	—	0	2	10	8	12	12	76	610	779	—	0	1	5	2
Massachusetts	—	1	7	77	85	—	36	161	1,876	4,884	—	1	3	37	34
New Hampshire	—	0	5	15	11	1	22	64	1,050	1,259	—	0	2	4	4
Rhode Island†	—	0	4	23	14	—	1	40	146	215	—	0	1	7	5
Vermont†	—	0	2	9	7	3	4	27	281	362	—	0	1	3	3
<b>Mid. Atlantic</b>	29	16	32	664	1,027	85	172	697	10,614	14,277	3	7	17	316	340
New Jersey	—	2	8	52	188	—	43	197	2,710	4,630	—	0	4	1	89
New York (Upstate)	19	5	19	236	306	61	54	577	2,522	3,466	1	1	6	64	41
New York City	—	2	9	113	205	—	2	17	67	945	—	4	14	203	164
Pennsylvania	10	6	16	263	328	24	74	374	5,315	5,236	2	1	3	48	46
<b>E.N. Central</b>	9	11	41	586	612	2	17	171	1,696	2,772	—	2	9	124	150
Illinois	—	1	15	118	108	—	1	16	107	134	—	1	7	44	64
Indiana	3	2	6	90	53	—	1	7	63	79	—	0	2	7	20
Michigan	1	3	20	143	138	—	1	14	83	94	—	0	4	27	25
Ohio	5	4	12	189	244	1	0	5	22	46	—	0	5	37	32
Wisconsin	—	1	11	46	69	1	14	148	1,421	2,419	—	0	1	9	9
<b>W.N. Central</b>	1	2	19	101	98	—	3	1,395	108	204	1	1	11	62	57
Iowa	—	0	2	13	20	—	1	10	75	104	1	0	2	11	10
Kansas	1	0	2	9	7	—	0	1	6	18	—	0	2	10	6
Minnesota	—	0	16	27	8	—	0	1,380	—	74	—	0	11	3	23
Missouri	—	0	4	31	50	—	0	1	1	3	—	0	3	20	10
Nebraska†	—	0	2	8	11	—	0	2	9	4	—	0	2	15	7
North Dakota	—	0	1	6	1	—	0	15	16	—	—	0	1	—	—
South Dakota	—	0	2	7	1	—	0	1	1	1	—	0	2	3	1
<b>S. Atlantic</b>	14	10	26	437	466	38	62	171	3,236	3,814	5	6	35	302	304
Delaware	—	0	3	14	17	—	11	31	542	882	—	0	1	2	4
District of Columbia	—	0	4	15	18	—	0	4	20	57	—	0	2	9	15
Florida	5	3	9	146	145	1	2	11	85	80	—	2	7	106	82
Georgia	1	1	4	39	49	—	0	2	8	38	—	0	2	3	62
Maryland†	3	2	8	98	121	18	26	96	1,418	1,814	2	1	18	72	61
North Carolina	1	0	7	48	51	1	1	9	77	89	—	0	13	45	25
South Carolina†	—	0	2	9	9	—	0	3	27	32	—	0	1	4	4
Virginia†	4	1	6	57	48	18	16	79	954	681	3	1	5	58	49
West Virginia	—	0	3	11	8	—	0	32	105	141	—	0	2	3	2
<b>E.S. Central</b>	3	2	10	107	118	—	1	4	39	32	—	0	3	26	29
Alabama†	1	0	2	15	15	—	0	1	2	2	—	0	1	6	8
Kentucky	—	0	4	23	44	—	0	1	4	1	—	0	3	6	9
Mississippi	—	0	3	9	4	—	0	0	—	—	—	0	2	2	3
Tennessee†	2	1	6	60	55	—	1	4	33	29	—	0	2	12	9
<b>W.S. Central</b>	3	3	14	113	94	2	2	44	85	178	2	1	31	75	57
Arkansas†	—	0	2	12	7	—	0	0	—	—	—	0	1	2	5
Louisiana	—	0	3	7	12	—	0	1	2	—	—	0	1	4	5
Oklahoma	1	0	4	12	3	—	0	2	—	—	—	0	1	5	1
Texas†	2	2	10	82	72	2	2	42	83	178	2	1	30	64	46
<b>Mountain</b>	1	3	10	128	112	—	0	3	19	51	4	1	3	53	44
Arizona	—	1	5	46	36	—	0	1	3	6	—	0	2	22	8
Colorado	—	0	5	27	19	—	0	1	2	1	3	0	2	18	25
Idaho†	1	0	1	6	5	—	0	2	6	14	1	0	1	3	2
Montana†	—	0	1	4	5	—	0	1	1	3	—	0	1	2	5
Nevada†	—	0	2	18	12	—	0	1	—	12	—	0	1	4	—
New Mexico†	—	0	2	6	9	—	0	2	5	5	—	0	1	1	—
Utah	—	0	3	16	22	—	0	1	2	8	—	0	1	3	4
Wyoming†	—	0	2	5	4	—	0	1	—	2	—	0	0	—	—
<b>Pacific</b>	6	5	19	214	150	7	4	11	192	136	6	3	19	146	122
Alaska	—	0	2	2	1	—	0	1	6	5	—	0	1	2	2
California	5	4	19	182	113	3	3	10	127	87	2	2	13	100	90
Hawaii	—	0	1	1	1	N	0	0	N	N	—	0	1	1	1
Oregon	—	0	3	11	15	—	1	4	46	34	2	0	1	12	11
Washington	1	0	4	18	20	4	0	3	13	10	2	0	5	31	18
<b>Territories</b>															
American Samoa	—	0	0	—	—	N	0	0	N	N	—	0	0	—	—
C.N.M.I.	—	—	—	—	—	—	—	—	—	—	—	—	—	—	—
Guam	—	0	1	1	—	—	0	0	—	—	—	0	0	—	—
Puerto Rico	—	0	1	—	1	N	0	0	N	N	—	0	2	4	5
U.S. Virgin Islands	—	0	0	—	—	—	0	0	—	—	—	0	0	—	—

C.N.M.I.: Commonwealth of Northern Mariana Islands.

U: Unavailable. —: No reported cases. N: Not reportable. NN: Not Nationally Notifiable. Cum: Cumulative year-to-date counts. Med: Median. Max: Maximum.

\* Incidence data for reporting year 2010 is provisional.

† Contains data reported through the National Electronic Disease Surveillance System (NEDSS).



MMWR Morbidity and Mortality Weekly Report

TABLE II. (Continued) Provisional cases of selected notifiable diseases, United States, weeks ending October 23, 2010, and October 24, 2009 (42nd week)\*

Reporting area	Meningococcal disease, invasive†					Pertussis					Rabies, animal				
	All groups														
	Current week	Previous 52 weeks		Cum 2010	Cum 2009	Current week	Previous 52 weeks		Cum 2010	Cum 2009	Current week	Previous 52 weeks		Cum 2010	Cum 2009
	Med	Max				Med	Max				Med	Max			
<b>United States</b>	8	16	43	593	762	199	308	1,756	15,121	12,689	34	68	139	2,779	4,406
<b>New England</b>	—	0	2	13	28	—	8	20	340	554	4	4	15	203	289
Connecticut	—	0	2	2	3	—	1	8	92	45	—	0	14	59	126
Maine <sup>§</sup>	—	0	1	3	4	—	0	5	36	76	2	1	4	54	48
Massachusetts	—	0	1	3	13	—	4	11	164	315	—	0	0	—	—
New Hampshire	—	0	0	—	3	—	0	3	15	71	—	0	5	12	28
Rhode Island <sup>§</sup>	—	0	0	—	4	—	0	8	22	36	—	1	4	31	38
Vermont <sup>§</sup>	—	0	1	5	1	—	0	4	11	11	2	1	5	47	49
<b>Mid. Atlantic</b>	1	1	4	50	84	23	22	64	1,181	984	7	18	41	859	497
New Jersey	—	0	2	9	16	—	3	8	101	204	—	0	0	—	—
New York (Upstate)	1	0	3	11	17	18	8	27	419	175	6	9	19	429	380
New York City	—	0	2	14	14	—	0	9	71	80	1	2	12	120	17
Pennsylvania	—	0	2	16	37	5	9	39	590	525	—	5	24	310	100
<b>E.N. Central</b>	—	2	8	107	139	57	74	173	3,732	2,666	—	2	27	218	212
Illinois	—	0	4	19	36	—	12	29	605	559	—	1	11	112	79
Indiana	—	0	3	22	30	—	9	26	429	304	—	0	0	—	25
Michigan	—	0	2	18	18	8	23	51	1,056	724	—	1	5	63	63
Ohio	—	1	2	27	34	49	22	69	1,294	929	—	0	12	43	45
Wisconsin	—	0	2	21	21	—	6	17	348	150	—	0	0	—	—
<b>W.N. Central</b>	1	1	6	42	61	20	28	627	1,744	1,829	—	4	16	206	346
Iowa	—	0	3	9	8	—	6	25	372	201	—	0	2	7	31
Kansas	—	0	2	6	11	—	3	9	132	213	—	1	4	54	69
Minnesota	—	0	2	2	11	—	0	601	682	366	—	0	9	26	55
Missouri	1	0	3	18	21	13	8	25	313	867	—	1	6	62	62
Nebraska <sup>§</sup>	—	0	2	5	7	7	2	13	178	126	—	1	4	44	77
North Dakota	—	0	1	2	1	—	0	30	41	17	—	0	7	13	4
South Dakota	—	0	2	—	2	—	1	5	26	39	—	0	2	—	48
<b>S. Atlantic</b>	2	2	7	113	140	13	27	77	1,241	1,394	22	21	73	906	1,821
Delaware	—	0	1	2	2	—	0	4	10	12	—	0	0	—	—
District of Columbia	—	0	0	—	—	—	0	1	4	6	—	0	0	—	—
Florida	—	1	5	50	45	6	5	28	264	459	—	0	60	72	161
Georgia	—	0	2	9	29	—	3	18	193	206	—	0	13	—	345
Maryland <sup>§</sup>	—	0	1	7	9	1	3	8	101	123	7	7	14	313	333
North Carolina	—	0	2	14	27	—	1	32	124	170	—	0	10	—	420
South Carolina <sup>§</sup>	—	0	1	10	11	—	5	19	292	220	—	0	0	—	—
Virginia <sup>§</sup>	2	0	2	19	12	—	5	15	176	170	10	10	25	458	466
West Virginia	—	0	2	2	5	6	1	13	77	28	5	1	6	63	96
<b>E.S. Central</b>	—	1	4	35	25	4	14	33	602	677	—	3	7	126	128
Alabama <sup>§</sup>	—	0	2	6	7	—	4	8	160	265	—	0	4	41	—
Kentucky	—	0	2	16	4	—	4	13	208	196	—	0	4	16	43
Mississippi	—	0	1	4	3	—	1	7	54	58	—	0	1	1	4
Tennessee <sup>§</sup>	—	0	2	9	11	4	4	11	180	158	—	1	4	68	81
<b>W.S. Central</b>	—	1	9	65	73	25	57	753	2,285	2,686	—	1	30	61	792
Arkansas <sup>§</sup>	—	0	2	5	8	—	3	29	119	295	—	0	7	21	38
Louisiana	—	0	4	12	15	—	1	4	30	135	—	0	0	—	—
Oklahoma	—	0	7	15	11	—	0	41	54	41	—	0	30	40	30
Texas <sup>§</sup>	—	1	7	33	39	25	49	681	2,082	2,215	—	0	20	—	724
<b>Mountain</b>	1	1	6	46	55	19	22	49	1,065	803	—	1	8	76	97
Arizona	—	0	2	11	12	—	7	14	325	203	—	0	5	—	—
Colorado	1	0	4	15	18	16	4	15	198	188	—	0	0	—	—
Idaho <sup>§</sup>	—	0	2	7	7	2	3	19	172	68	—	0	2	11	8
Montana <sup>§</sup>	—	0	1	1	5	—	1	12	65	49	—	0	3	16	25
Nevada <sup>§</sup>	—	0	1	8	4	1	0	7	30	23	—	0	2	7	6
New Mexico <sup>§</sup>	—	0	1	3	3	—	2	9	88	59	—	0	3	11	25
Utah	—	0	1	1	2	—	4	11	177	191	—	0	2	10	12
Wyoming <sup>§</sup>	—	0	1	—	4	—	0	2	10	22	—	0	4	21	21
<b>Pacific</b>	3	3	16	122	157	38	39	204	2,931	1,096	1	3	12	124	224
Alaska	—	0	1	1	6	—	0	6	35	38	—	0	2	12	11
California	1	2	13	80	101	15	27	176	2,226	553	1	2	12	101	202
Hawaii	—	0	1	1	5	—	0	6	39	37	—	0	0	—	—
Oregon	—	1	3	25	32	1	6	16	285	232	—	0	2	11	11
Washington	2	0	7	15	13	22	4	38	346	236	—	0	0	—	—
<b>Territories</b>															
American Samoa	—	0	0	—	—	—	0	0	—	—	N	0	0	N	N
C.N.M.I.	—	—	—	—	—	—	—	—	—	—	—	—	—	—	—
Guam	—	0	0	—	—	—	0	2	—	—	—	0	0	—	—
Puerto Rico	—	0	1	—	—	—	0	1	2	1	—	1	3	36	36
U.S. Virgin Islands	—	0	0	—	—	—	0	0	—	—	—	0	0	—	—

C.N.M.I.: Commonwealth of Northern Mariana Islands.

U: Unavailable. —: No reported cases. N: Not reportable. NN: Not Nationally Notifiable. Cum: Cumulative year-to-date counts. Med: Median. Max: Maximum.

\* Incidence data for reporting year 2010 is provisional.

† Data for meningococcal disease, invasive caused by serogroups A, C, Y, and W-135; serogroup B; other serogroup; and unknown serogroup are available in Table I.

§ Contains data reported through the National Electronic Disease Surveillance System (NEDSS).

MMWR Morbidity and Mortality Weekly Report

TABLE II. (Continued) Provisional cases of selected notifiable diseases, United States, weeks ending October 23, 2010, and October 24, 2009 (42nd week)\*

Reporting area	Salmonellosis					Shiga toxin-producing <i>E. coli</i> (STEC) <sup>†</sup>					Shigellosis				
	Current week	Previous 52 weeks		Cum 2010	Cum 2009	Current week	Previous 52 weeks		Cum 2010	Cum 2009	Current week	Previous 52 weeks		Cum 2010	Cum 2009
		Med	Max				Med	Max				Med	Max		
<b>United States</b>	899	928	1,685	40,649	39,794	71	80	205	3,759	3,855	194	272	527	11,087	12,939
<b>New England</b>	3	29	432	1,808	1,923	—	2	51	163	230	—	4	61	260	303
Connecticut	—	0	416	416	430	—	0	51	51	67	—	0	55	55	43
Maine <sup>§</sup>	2	2	7	103	111	—	0	3	16	16	—	0	1	5	5
Massachusetts	—	21	48	945	968	—	1	8	62	89	—	4	16	179	210
New Hampshire	—	3	10	141	234	—	0	2	17	33	—	0	2	9	18
Rhode Island <sup>§</sup>	—	2	17	140	124	—	0	26	2	1	—	0	3	11	22
Vermont <sup>§</sup>	1	1	5	63	56	—	0	2	15	24	—	0	1	1	5
<b>Mid. Atlantic</b>	49	96	217	4,742	4,661	3	8	31	430	372	10	33	53	1,319	2,421
New Jersey	—	16	56	845	973	—	1	4	52	90	—	6	16	257	531
New York (Upstate)	24	25	78	1,217	1,096	2	3	15	166	124	8	4	19	190	182
New York City	8	25	56	1,146	1,073	—	1	7	62	54	—	6	13	249	389
Pennsylvania	17	29	82	1,534	1,519	1	3	13	150	104	2	15	35	623	1,319
<b>E.N. Central</b>	38	80	236	4,283	4,423	3	10	39	618	643	8	26	238	1,449	2,237
Illinois	—	27	113	1,455	1,263	—	1	8	90	156	—	9	228	720	525
Indiana	—	9	53	369	519	—	1	8	62	79	—	1	5	31	62
Michigan	4	15	47	779	838	—	2	16	145	122	1	4	9	199	194
Ohio	34	24	47	1,139	1,222	3	2	11	125	116	7	6	23	260	996
Wisconsin	—	10	44	541	581	—	3	17	196	170	—	4	21	239	460
<b>W.N. Central</b>	37	44	98	2,067	2,256	8	10	39	540	652	22	48	88	1,820	855
Iowa	4	8	34	444	349	—	2	16	142	141	—	1	5	47	49
Kansas	8	7	19	378	338	3	1	6	61	50	2	5	14	218	171
Minnesota	—	0	32	178	481	—	0	13	31	190	—	0	4	14	69
Missouri	21	13	44	696	559	4	3	27	214	120	15	42	75	1,490	531
Nebraska <sup>§</sup>	4	4	13	206	299	1	1	6	65	80	5	1	9	44	27
North Dakota	—	0	39	46	59	—	0	7	—	7	—	0	5	—	4
South Dakota	—	3	8	119	171	—	0	4	27	64	—	0	2	7	4
<b>S. Atlantic</b>	394	267	586	12,277	11,296	14	13	30	576	565	65	41	97	2,068	1,994
Delaware	3	3	11	153	121	—	0	2	5	12	—	1	10	38	107
District of Columbia	—	1	6	63	83	—	0	1	5	2	—	0	4	22	21
Florida	188	127	227	5,055	4,995	10	4	13	200	141	37	14	53	899	385
Georgia	68	40	129	2,194	2,009	—	1	15	86	59	22	13	39	631	541
Maryland <sup>§</sup>	17	15	52	852	667	1	1	6	76	79	2	3	8	109	331
North Carolina	52	29	197	1,592	1,542	2	1	10	63	96	1	2	18	162	338
South Carolina <sup>§</sup>	32	20	93	1,280	819	—	0	3	19	27	—	1	5	59	100
Virginia <sup>§</sup>	34	18	68	941	878	1	2	15	106	123	3	3	15	122	163
West Virginia	—	3	16	147	182	—	0	4	16	26	—	0	11	26	8
<b>E.S. Central</b>	31	52	175	2,997	2,629	—	4	11	196	181	5	12	40	554	681
Alabama <sup>§</sup>	—	13	46	665	771	—	1	4	37	40	—	3	10	120	127
Kentucky	—	8	31	458	391	—	1	6	53	61	1	4	28	195	178
Mississippi	6	14	68	992	793	—	0	2	14	6	—	1	4	40	43
Tennessee <sup>§</sup>	25	14	53	882	674	—	2	7	92	74	4	5	11	199	333
<b>W.S. Central</b>	137	115	547	4,962	4,768	5	5	68	248	261	47	50	251	2,045	2,419
Arkansas <sup>§</sup>	19	10	43	646	536	—	1	5	44	36	—	1	9	52	269
Louisiana	1	21	47	990	986	—	0	2	14	22	1	4	13	210	157
Oklahoma	20	10	46	551	532	3	0	27	24	30	6	6	96	233	236
Texas <sup>§</sup>	97	74	477	2,775	2,714	2	4	41	166	173	40	35	144	1,550	1,757
<b>Mountain</b>	21	49	105	2,250	2,548	6	9	33	475	500	4	15	32	641	995
Arizona	2	18	42	784	872	—	1	5	56	54	1	8	18	340	715
Colorado	12	10	23	475	538	1	2	18	155	151	2	2	6	100	86
Idaho <sup>§</sup>	5	3	9	133	152	5	1	7	82	83	1	0	3	23	7
Montana <sup>§</sup>	—	2	7	75	98	—	0	5	36	32	—	0	1	6	11
Nevada <sup>§</sup>	1	4	22	240	219	—	0	5	28	32	—	0	6	34	65
New Mexico <sup>§</sup>	—	5	15	252	315	—	0	5	33	33	—	2	9	102	93
Utah	—	5	17	253	274	—	1	7	71	102	—	1	4	36	16
Wyoming <sup>§</sup>	1	1	9	38	80	—	0	2	14	13	—	0	2	—	2
<b>Pacific</b>	189	113	299	5,263	5,290	32	10	46	513	451	33	20	64	931	1,034
Alaska	—	1	5	69	55	—	0	1	2	1	—	0	2	1	2
California	135	82	227	3,980	3,938	13	5	35	227	216	26	16	51	770	832
Hawaii	11	4	14	174	285	—	0	4	18	7	—	0	3	17	36
Oregon	2	8	48	439	374	—	2	7	85	70	—	1	4	47	43
Washington	41	14	61	601	638	19	3	18	181	157	7	1	21	96	121
<b>Territories</b>															
American Samoa	—	0	1	2	—	—	0	0	—	—	1	1	1	4	3
C.N.M.I.	—	—	—	—	—	—	—	—	—	—	—	—	—	—	—
Guam	—	0	1	4	11	—	0	0	—	—	—	0	3	1	10
Puerto Rico	—	10	39	423	468	—	0	0	—	—	—	0	1	4	11
U.S. Virgin Islands	—	0	0	—	—	—	0	0	—	—	—	0	0	—	—

C.N.M.I.: Commonwealth of Northern Mariana Islands.

U: Unavailable. —: No reported cases. N: Not reportable. NN: Not Nationally Notifiable. Cum: Cumulative year-to-date counts. Med: Median. Max: Maximum.

\* Incidence data for reporting year 2010 is provisional.

† Includes *E. coli* O157:H7; Shiga toxin-positive, serogroup non-O157; and Shiga toxin-positive, not serogrouped.

§ Contains data reported through the National Electronic Disease Surveillance System (NEDSS).

MMWR Morbidity and Mortality Weekly Report

TABLE II. (Continued) Provisional cases of selected notifiable diseases, United States, weeks ending October 23, 2010, and October 24, 2009 (42nd week)\*

Reporting area	Spotted Fever Rickettsiosis (including RMSF) <sup>†</sup>									
	Confirmed					Probable				
	Current week	Previous 52 weeks		Cum 2010	Cum 2009	Current week	Previous 52 weeks		Cum 2010	Cum 2009
	Med	Max				Med	Max			
<b>United States</b>	—	2	12	137	137	7	18	421	1,283	1,182
<b>New England</b>	—	0	0	—	2	—	0	1	3	10
Connecticut	—	0	0	—	—	—	0	0	—	—
Maine <sup>§</sup>	—	0	0	—	—	—	0	1	2	5
Massachusetts	—	0	0	—	1	—	0	1	—	5
New Hampshire	—	0	0	—	—	—	0	1	1	—
Rhode Island <sup>§</sup>	—	0	0	—	—	—	0	0	—	—
Vermont <sup>§</sup>	—	0	0	—	1	—	0	0	—	—
<b>Mid. Atlantic</b>	—	0	2	15	11	—	1	4	50	89
New Jersey	—	0	0	—	2	—	0	2	—	57
New York (Upstate)	—	0	1	2	—	—	0	3	15	13
New York City	—	0	1	1	1	—	0	4	23	6
Pennsylvania	—	0	2	12	8	—	0	1	12	13
<b>E.N. Central</b>	—	0	1	4	9	—	1	9	88	79
Illinois	—	0	1	2	1	—	0	5	29	47
Indiana	—	0	1	2	3	—	0	5	43	10
Michigan	—	0	0	—	4	—	0	1	1	1
Ohio	—	0	0	—	—	—	0	2	14	17
Wisconsin	—	0	0	—	1	—	0	1	1	4
<b>W.N. Central</b>	—	0	4	17	18	2	3	21	284	248
Iowa	—	0	0	—	1	—	0	1	4	4
Kansas	—	0	1	2	1	—	0	0	—	—
Minnesota	—	0	1	—	1	—	0	1	—	1
Missouri	—	0	4	13	7	2	3	20	276	239
Nebraska <sup>§</sup>	—	0	1	2	8	—	0	1	3	4
North Dakota	—	0	0	—	—	—	0	1	1	—
South Dakota	—	0	0	—	—	—	0	0	—	—
<b>S. Atlantic</b>	—	1	9	67	64	—	7	60	434	355
Delaware	—	0	1	1	—	—	0	3	17	16
District of Columbia	—	0	0	—	—	—	0	1	—	—
Florida	—	0	1	3	—	—	0	2	11	5
Georgia	—	0	6	45	50	—	0	0	—	—
Maryland <sup>§</sup>	—	0	1	2	3	—	0	4	45	34
North Carolina	—	0	3	11	7	—	1	48	228	236
South Carolina <sup>§</sup>	—	0	1	1	3	—	0	2	16	15
Virginia <sup>§</sup>	—	0	2	4	1	—	1	11	117	47
West Virginia	—	0	0	—	—	—	0	0	—	2
<b>E.S. Central</b>	—	0	4	20	9	2	4	29	336	247
Alabama <sup>§</sup>	—	0	1	4	3	—	1	8	70	60
Kentucky	—	0	2	6	1	—	0	0	—	—
Mississippi	—	0	0	—	—	—	0	2	9	9
Tennessee <sup>§</sup>	—	0	4	10	5	2	3	20	257	178
<b>W.S. Central</b>	—	0	3	6	8	2	1	408	80	130
Arkansas <sup>§</sup>	—	0	2	2	—	—	0	110	37	67
Louisiana	—	0	0	—	—	—	0	1	2	2
Oklahoma	—	0	3	3	6	—	0	287	22	43
Texas <sup>§</sup>	—	0	1	1	2	2	0	11	19	18
<b>Mountain</b>	—	0	1	2	15	1	0	2	8	24
Arizona	—	0	1	—	9	1	0	1	2	12
Colorado	—	0	0	—	1	—	0	1	1	—
Idaho <sup>§</sup>	—	0	0	—	—	—	0	1	2	1
Montana <sup>§</sup>	—	0	1	2	4	—	0	1	1	6
Nevada <sup>§</sup>	—	0	0	—	—	—	0	0	—	1
New Mexico <sup>§</sup>	—	0	0	—	—	—	0	1	1	1
Utah	—	0	0	—	—	—	0	1	1	1
Wyoming <sup>§</sup>	—	0	0	—	1	—	0	0	—	2
<b>Pacific</b>	—	0	2	6	1	—	0	0	—	—
Alaska	N	0	0	N	N	N	0	0	N	N
California	—	0	2	5	1	—	0	0	—	—
Hawaii	N	0	0	N	N	N	0	0	N	N
Oregon	—	0	1	1	—	—	0	0	—	—
Washington	—	0	0	—	—	—	0	0	—	—
<b>Territories</b>										
American Samoa	N	0	0	N	N	N	0	0	N	N
C.N.M.I.	—	—	—	—	—	—	—	—	—	—
Guam	N	0	0	N	N	N	0	0	N	N
Puerto Rico	N	0	0	N	N	N	0	0	N	N
U.S. Virgin Islands	—	0	0	—	—	—	0	0	—	—

C.N.M.I.: Commonwealth of Northern Mariana Islands.

U: Unavailable. —: No reported cases. N: Not reportable. NN: Not Nationally Notifiable. Cum: Cumulative year-to-date counts. Med: Median. Max: Maximum.

\* Incidence data for reporting year 2010 is provisional.

<sup>†</sup> Illnesses with similar clinical presentation that result from Spotted fever group rickettsia infections are reported as Spotted fever rickettsioses. Rocky Mountain spotted fever (RMSF) caused by *Rickettsia rickettsii*, is the most common and well-known spotted fever.

<sup>§</sup> Contains data reported through the National Electronic Disease Surveillance System (NEDSS).

MMWR Morbidity and Mortality Weekly Report

TABLE II. (Continued) Provisional cases of selected notifiable diseases, United States, weeks ending October 23, 2010, and October 24, 2009 (42nd week)\*

Reporting area	<i>Streptococcus pneumoniae</i> , <sup>†</sup> invasive disease										Syphilis, primary and secondary				
	All ages					Age <5									
	Current week	Previous 52 weeks		Cum 2010	Cum 2009	Current week	Previous 52 weeks		Cum 2010	Cum 2009	Current week	Previous 52 weeks		Cum 2010	Cum 2009
		Med	Max				Med	Max				Med	Max		
<b>United States</b>	144	203	495	11,293	2,389	10	51	156	1,744	1,883	79	244	413	9,817	11,449
<b>New England</b>	21	8	100	625	44	—	1	24	79	62	3	8	22	373	258
Connecticut	17	0	92	282	—	—	0	22	25	—	—	1	10	78	48
Maine <sup>§</sup>	3	2	6	98	14	—	0	1	8	7	—	0	3	23	2
Massachusetts	—	0	5	54	3	—	1	4	37	39	2	5	15	221	185
New Hampshire	—	0	7	59	—	—	0	1	3	10	—	0	2	18	13
Rhode Island <sup>§</sup>	—	0	35	68	15	—	0	2	2	2	1	1	4	31	10
Vermont <sup>§</sup>	1	1	6	64	12	—	0	1	4	4	—	0	2	2	—
<b>Mid. Atlantic</b>	6	20	54	993	158	1	7	48	272	238	21	33	45	1,373	1,457
New Jersey	—	1	8	84	—	—	1	5	43	48	3	4	12	191	187
New York (Upstate)	—	3	12	128	64	—	3	19	91	103	2	2	11	106	97
New York City	3	7	25	394	12	—	1	24	94	72	11	18	31	781	894
Pennsylvania	3	7	22	387	82	1	0	5	44	15	5	7	16	295	279
<b>E.N. Central</b>	38	36	98	2,294	533	—	8	18	294	314	—	28	47	1,080	1,256
Illinois	—	1	7	80	—	—	2	5	73	53	—	9	23	347	611
Indiana	—	7	24	439	204	—	1	6	38	65	—	3	14	143	125
Michigan	6	11	27	547	24	—	2	6	71	58	—	4	12	175	197
Ohio	26	17	49	944	305	—	2	6	79	104	—	9	18	380	284
Wisconsin	6	6	22	284	—	—	1	4	33	34	—	1	3	35	39
<b>W.N. Central</b>	3	8	182	629	153	—	2	12	112	151	2	5	19	262	256
Iowa	—	0	0	—	—	—	0	0	—	—	—	0	3	15	21
Kansas	—	1	7	77	50	—	0	2	13	16	—	0	3	16	28
Minnesota	—	0	179	287	38	—	0	10	44	71	—	1	9	97	60
Missouri	1	2	10	92	54	—	1	3	33	40	2	3	10	124	138
Nebraska <sup>§</sup>	2	1	7	108	2	—	0	2	13	11	—	0	2	7	5
North Dakota	—	0	11	50	7	—	0	1	2	4	—	0	1	—	4
South Dakota	—	0	3	15	2	—	0	2	7	9	—	0	1	3	—
<b>S. Atlantic</b>	29	49	144	2,634	1,083	5	12	28	437	449	22	56	218	2,344	2,756
Delaware	—	0	3	31	18	—	0	0	—	3	—	0	2	4	25
District of Columbia	—	0	4	21	18	—	0	2	7	4	—	2	12	118	148
Florida	15	22	89	1,187	631	3	3	18	161	159	1	20	45	862	858
Georgia	5	10	28	432	320	—	3	12	120	121	6	11	167	465	658
Maryland <sup>§</sup>	4	7	31	413	4	1	1	6	45	66	—	6	12	240	246
North Carolina	—	0	0	—	—	—	0	0	—	—	6	7	31	292	460
South Carolina <sup>§</sup>	3	6	25	407	—	—	1	4	42	39	4	2	7	122	101
Virginia <sup>§</sup>	—	0	4	46	—	—	1	4	44	38	5	4	22	237	256
West Virginia	2	1	21	97	92	1	0	4	18	19	—	0	2	4	4
<b>E.S. Central</b>	13	20	50	1,002	220	1	2	8	99	118	8	18	39	734	945
Alabama <sup>§</sup>	—	0	0	—	—	—	0	0	—	—	—	5	12	190	366
Kentucky	1	3	16	156	61	—	0	2	13	8	3	2	13	107	54
Mississippi	—	1	6	46	42	—	0	2	10	21	3	4	17	182	181
Tennessee <sup>§</sup>	12	14	44	800	117	1	2	7	76	89	2	5	17	255	344
<b>W.S. Central</b>	19	20	91	1,445	100	1	5	41	231	286	9	38	59	1,506	2,321
Arkansas <sup>§</sup>	3	2	9	134	46	—	0	3	14	35	4	3	13	138	214
Louisiana	—	1	8	71	54	—	0	3	21	23	2	7	24	337	650
Oklahoma	—	1	5	40	—	—	1	5	40	52	3	2	7	68	74
Texas <sup>§</sup>	16	16	83	1,200	—	1	3	34	156	176	—	25	34	963	1,383
<b>Mountain</b>	11	24	82	1,427	95	1	5	12	190	238	2	9	23	400	439
Arizona	3	9	51	644	—	—	2	7	81	103	—	3	7	124	195
Colorado	8	8	20	431	—	1	1	4	55	37	—	2	8	105	80
Idaho <sup>§</sup>	—	0	2	11	—	—	0	2	5	7	—	0	1	2	3
Montana <sup>§</sup>	—	0	2	17	—	—	0	1	1	—	—	0	1	2	2
Nevada <sup>§</sup>	—	1	4	64	35	—	0	1	5	7	1	1	9	94	83
New Mexico <sup>§</sup>	—	2	9	124	—	—	0	4	15	29	1	1	4	39	48
Utah	—	2	9	126	50	—	0	4	25	53	—	1	4	34	25
Wyoming <sup>§</sup>	—	0	1	10	10	—	0	1	3	2	—	0	0	—	3
<b>Pacific</b>	4	5	14	244	3	1	0	7	30	27	12	42	60	1,745	1,761
Alaska	—	2	9	94	—	—	0	5	18	18	—	0	1	1	—
California	4	3	12	150	—	1	0	2	12	—	8	37	55	1,508	1,566
Hawaii	—	0	0	—	3	—	0	1	—	9	—	0	3	27	30
Oregon	—	0	0	—	—	—	0	0	—	—	—	1	6	52	42
Washington	—	0	0	—	—	—	0	0	—	—	4	3	10	157	123
<b>Territories</b>															
American Samoa	—	0	0	—	—	—	0	0	—	—	—	0	0	—	—
C.N.M.I.	—	—	—	—	—	—	—	—	—	—	—	—	—	—	—
Guam	—	0	0	—	—	—	0	0	—	—	—	0	0	—	—
Puerto Rico	—	0	0	—	—	—	0	0	—	—	1	4	15	183	184
U.S. Virgin Islands	—	0	0	—	—	—	0	0	—	—	—	0	0	—	—

C.N.M.I.: Commonwealth of Northern Mariana Islands.

U: Unavailable. —: No reported cases. N: Not reportable. NN: Not Nationally Notifiable. Cum: Cumulative year-to-date counts. Med: Median. Max: Maximum.

\* Incidence data for reporting year 2010 is provisional.

<sup>†</sup> Includes drug resistant and susceptible cases of invasive *Streptococcus pneumoniae* disease among children <5 years and among all ages. Case definition: Isolation of *S. pneumoniae* from a normally sterile body site (e.g., blood or cerebrospinal fluid).

<sup>§</sup> Contains data reported through the National Electronic Disease Surveillance System (NEDSS).

MMWR Morbidity and Mortality Weekly Report

TABLE II. (Continued) Provisional cases of selected notifiable diseases, United States, weeks ending October 23, 2010, and October 24, 2009 (42nd week)\*

Reporting area	Varicella (chickenpox) <sup>§</sup>					West Nile virus disease <sup>†</sup>									
	Current week	Previous 52 weeks		Cum 2010	Cum 2009	Neuroinvasive					Nonneuroinvasive <sup>¶</sup>				
		Med	Max			Current week	Med	Max	Cum 2010	Cum 2009	Current week	Med	Max	Cum 2010	Cum 2009
<b>United States</b>	210	308	547	11,457	17,318	—	0	69	509	382	—	0	48	323	334
<b>New England</b>	4	15	36	597	906	—	0	3	13	—	—	0	1	2	—
Connecticut	—	6	20	253	419	—	0	2	6	—	—	0	1	1	—
Maine <sup>§</sup>	—	4	15	178	193	—	0	0	—	—	—	0	0	—	—
Massachusetts	—	0	0	—	4	—	0	2	6	—	—	0	1	1	—
New Hampshire	2	2	8	114	174	—	0	1	1	—	—	0	0	—	—
Rhode Island <sup>§</sup>	—	1	12	27	32	—	0	0	—	—	—	0	0	—	—
Vermont <sup>§</sup>	2	0	10	25	84	—	0	0	—	—	—	0	0	—	—
<b>Mid. Atlantic</b>	9	32	62	1,267	1,734	—	0	19	121	9	—	0	13	60	1
New Jersey	—	8	30	428	364	—	0	3	14	3	—	0	6	15	—
New York (Upstate)	N	0	0	N	N	—	0	9	56	3	—	0	7	30	1
New York City	—	0	0	—	—	—	0	7	32	3	—	0	4	8	—
Pennsylvania	9	21	39	839	1,370	—	0	3	19	—	—	0	3	7	—
<b>E.N. Central</b>	69	103	176	3,833	5,371	—	0	14	61	9	—	0	6	24	4
Illinois	2	23	49	989	1,319	—	0	10	33	5	—	0	4	11	—
Indiana <sup>§</sup>	—	5	35	333	388	—	0	1	2	2	—	0	2	6	2
Michigan	19	33	62	1,140	1,550	—	0	6	23	1	—	0	1	4	—
Ohio	44	29	56	1,086	1,617	—	0	1	3	—	—	0	1	1	2
Wisconsin	4	7	22	285	497	—	0	0	—	1	—	0	1	2	—
<b>W.N. Central</b>	9	15	40	644	1,097	—	0	7	26	26	—	0	8	60	75
Iowa	N	0	0	N	N	—	0	1	2	—	—	0	2	4	5
Kansas <sup>§</sup>	—	6	22	222	460	—	0	1	1	4	—	0	2	5	9
Minnesota	—	0	0	—	—	—	0	1	4	1	—	0	1	2	3
Missouri	7	7	23	352	529	—	0	1	3	4	—	0	0	—	1
Nebraska <sup>§</sup>	N	0	0	N	N	—	0	3	10	11	—	0	7	27	41
North Dakota	—	0	26	31	57	—	0	2	2	—	—	0	1	6	1
South Dakota	2	0	6	39	51	—	0	2	4	6	—	0	3	16	15
<b>S. Atlantic</b>	17	36	98	1,753	2,223	—	0	4	26	16	—	0	4	15	2
Delaware <sup>§</sup>	—	0	3	15	11	—	0	0	—	—	—	0	0	—	—
District of Columbia	—	0	4	17	27	—	0	1	1	2	—	0	1	1	—
Florida <sup>§</sup>	10	15	57	856	1,023	—	0	2	6	2	—	0	1	3	1
Georgia	N	0	0	N	N	—	0	1	4	4	—	0	3	7	—
Maryland <sup>§</sup>	N	0	0	N	N	—	0	3	13	—	—	0	2	4	1
North Carolina	N	0	0	N	N	—	0	0	—	—	—	0	0	—	—
South Carolina <sup>§</sup>	—	0	35	75	108	—	0	0	—	3	—	0	0	—	—
Virginia <sup>§</sup>	2	11	34	414	628	—	0	1	2	5	—	0	0	—	—
West Virginia	5	8	26	376	426	—	0	0	—	—	—	0	0	—	—
<b>E.S. Central</b>	2	6	22	246	475	—	0	1	8	36	—	0	3	9	27
Alabama <sup>§</sup>	2	5	22	239	470	—	0	1	1	—	—	0	1	2	—
Kentucky	N	0	0	N	N	—	0	1	2	3	—	0	1	1	—
Mississippi	—	0	2	7	5	—	0	1	3	29	—	0	2	4	22
Tennessee <sup>§</sup>	N	0	0	N	N	—	0	1	2	4	—	0	2	2	5
<b>W.S. Central</b>	92	49	285	2,260	4,260	—	0	15	81	116	—	0	3	14	35
Arkansas <sup>§</sup>	—	3	32	122	427	—	0	3	6	6	—	0	0	—	—
Louisiana	—	1	5	40	119	—	0	3	14	10	—	0	1	6	11
Oklahoma	N	0	0	N	N	—	0	0	—	8	—	0	0	—	2
Texas <sup>§</sup>	92	41	272	2,098	3,714	—	0	15	61	92	—	0	2	8	22
<b>Mountain</b>	8	20	36	813	1,160	—	0	16	131	77	—	0	15	116	123
Arizona	—	0	0	—	—	—	0	12	89	12	—	0	9	53	8
Colorado <sup>§</sup>	8	8	16	330	451	—	0	5	25	36	—	0	11	52	67
Idaho <sup>§</sup>	N	0	0	N	N	—	0	0	—	9	—	0	1	1	29
Montana <sup>§</sup>	—	3	17	162	136	—	0	0	—	2	—	0	0	—	3
Nevada <sup>§</sup>	N	0	0	N	N	—	0	0	—	7	—	0	1	2	5
New Mexico <sup>§</sup>	—	2	8	87	100	—	0	4	14	6	—	0	2	3	2
Utah	—	5	17	221	473	—	0	1	1	1	—	0	1	1	1
Wyoming <sup>§</sup>	—	0	3	13	—	—	0	1	2	4	—	0	1	4	8
<b>Pacific</b>	—	1	5	44	92	—	0	7	42	93	—	0	4	23	67
Alaska	—	0	5	33	54	—	0	0	—	—	—	0	0	—	—
California	—	0	0	—	—	—	0	7	42	66	—	0	4	23	45
Hawaii	—	0	2	11	38	—	0	0	—	—	—	0	0	—	—
Oregon	N	0	0	N	N	—	0	0	—	1	—	0	0	—	10
Washington	N	0	0	N	N	—	0	0	—	26	—	0	0	—	12
<b>Territories</b>															
American Samoa	N	0	0	N	N	—	0	0	—	—	—	0	0	—	—
C.N.M.I.	—	—	—	—	—	—	—	—	—	—	—	—	—	—	—
Guam	—	0	3	14	23	—	0	0	—	—	—	0	0	—	—
Puerto Rico	—	9	30	486	470	—	0	0	—	—	—	0	0	—	—
U.S. Virgin Islands	—	0	0	—	—	—	0	0	—	—	—	0	0	—	—

C.N.M.I.: Commonwealth of Northern Mariana Islands.

U: Unavailable. —: No reported cases. N: Not reportable. NN: Not Nationally Notifiable. Cum: Cumulative year-to-date counts. Med: Median. Max: Maximum.

\* Incidence data for reporting year 2010 is provisional. Data for HIV/AIDS, AIDS, and TB, when available, are displayed in Table IV, which appears quarterly.

† Updated weekly from reports to the Division of Vector-Borne Infectious Diseases, National Center for Zoonotic, Vector-Borne, and Enteric Diseases (ArboNET Surveillance). Data for California serogroup, eastern equine, Powassan, St. Louis, and western equine diseases are available in Table I.

§ Contains data reported through the National Electronic Disease Surveillance System (NEDSS).

¶ Not reportable in all states. Data from states where the condition is not reportable are excluded from this table, except starting in 2007 for the domestic arboviral diseases and influenza-associated pediatric mortality, and in 2003 for SARS-CoV. Reporting exceptions are available at <http://www.cdc.gov/ncphi/diss/nndss/phs/infdis.htm>.

MMWR Morbidity and Mortality Weekly Report

TABLE III. Deaths in 122 U.S. cities,\* week ending October 23, 2010 (42nd week)

Reporting area	All causes, by age (years)						P&† Total	Reporting area	All causes, by age (years)						P&† Total
	All Ages	≥65	45-64	25-44	1-24	<1			All Ages	≥65	45-64	25-44	1-24	<1	
<b>New England</b>	581	402	130	28	11	10	52	<b>S. Atlantic</b>	1,260	759	362	97	25	17	66
Boston, MA	139	90	33	7	6	3	13	Atlanta, GA	164	86	52	20	4	2	7
Bridgeport, CT	39	29	6	4	—	—	6	Baltimore, MD	133	70	48	9	4	2	8
Cambridge, MA	16	11	3	2	—	—	—	Charlotte, NC	131	88	35	6	1	1	6
Fall River, MA	27	21	5	—	1	—	—	Jacksonville, FL	158	101	44	8	3	2	10
Hartford, CT	58	37	16	3	2	—	6	Miami, FL	99	60	24	10	3	2	6
Lowell, MA	28	23	4	1	—	—	1	Norfolk, VA	62	38	17	4	2	1	1
Lynn, MA	8	7	1	—	—	—	2	Richmond, VA	67	39	22	1	1	4	3
New Bedford, MA	28	25	2	1	—	—	1	Savannah, GA	48	28	18	2	—	—	—
New Haven, CT	48	30	13	3	—	2	3	St. Petersburg, FL	47	30	14	3	—	—	2
Providence, RI	63	44	14	3	1	1	3	Tampa, FL	234	160	52	19	1	2	8
Somerville, MA	1	—	1	—	—	—	—	Washington, D.C.	103	51	32	13	6	1	12
Springfield, MA	39	26	9	1	1	2	2	Wilmington, DE	14	8	4	2	—	—	3
Waterbury, CT	23	17	5	1	—	—	3	<b>E.S. Central</b>	905	582	232	49	24	18	61
Worcester, MA	64	42	18	2	—	2	12	Birmingham, AL	188	123	42	10	7	6	17
<b>Mid. Atlantic</b>	1,863	1,305	403	92	33	25	103	Chattanooga, TN	82	53	22	2	3	2	3
Albany, NY	44	31	12	—	1	—	—	Knoxville, TN	110	67	34	5	3	1	5
Allentown, PA	27	21	5	1	—	—	3	Lexington, KY	58	32	15	8	1	2	5
Buffalo, NY	80	58	15	3	2	2	11	Memphis, TN	170	111	42	11	4	2	11
Camden, NJ	18	11	7	—	—	—	1	Mobile, AL	115	75	30	5	3	2	12
Elizabeth, NJ	15	7	6	2	—	—	2	Montgomery, AL	22	15	6	—	1	—	3
Erie, PA	56	45	9	2	—	—	2	Nashville, TN	160	106	41	8	2	3	5
Jersey City, NJ	13	7	3	2	1	—	2	<b>W.S. Central</b>	1,429	931	370	79	28	21	83
New York City, NY	1,060	747	232	47	19	15	50	Austin, TX	79	53	20	4	2	—	6
Newark, NJ	26	15	7	2	2	—	2	Baton Rouge, LA	71	59	7	4	1	—	—
Paterson, NJ	29	14	8	4	2	1	2	Corpus Christi, TX	66	43	19	4	—	—	5
Philadelphia, PA	157	88	47	17	2	3	2	Dallas, TX	174	109	44	16	2	3	7
Pittsburgh, PA <sup>§</sup>	40	31	6	3	—	—	4	El Paso, TX	108	75	27	3	3	—	3
Reading, PA	40	33	1	—	—	1	2	Fort Worth, TX	U	U	U	U	U	U	U
Rochester, NY	70	51	15	2	1	1	4	Houston, TX	437	267	126	23	11	10	32
Schenectady, NY	22	18	3	1	—	—	5	Little Rock, AR	84	59	16	4	3	2	—
Scranton, PA	24	18	5	1	—	—	2	New Orleans, LA	U	U	U	U	U	U	U
Syracuse, NY	82	64	13	2	1	2	5	San Antonio, TX	230	154	58	11	3	4	22
Trenton, NJ	23	17	4	—	2	—	1	Shreveport, LA	79	46	24	4	3	2	1
Utica, NY	16	12	4	—	—	—	1	Tulsa, OK	101	66	29	6	—	—	7
Yonkers, NY	21	17	1	3	—	—	2	<b>Mountain</b>	1,049	722	224	53	29	20	56
<b>E.N. Central</b>	1,941	1,296	481	98	38	28	120	Albuquerque, NM	140	103	30	4	2	1	11
Akron, OH	42	30	10	1	—	1	3	Boise, ID	68	51	13	2	2	—	5
Canton, OH	30	26	4	—	—	—	2	Colorado Springs, CO	54	42	7	3	2	—	1
Chicago, IL	262	167	76	17	2	—	28	Denver, CO	75	45	21	3	1	5	5
Cincinnati, OH	80	52	17	4	4	3	6	Las Vegas, NV	265	174	66	13	5	7	11
Cleveland, OH	242	168	64	7	3	—	11	Ogden, UT	34	22	9	1	2	—	3
Columbus, OH	188	114	51	13	6	4	8	Phoenix, AZ	157	94	36	14	7	6	9
Dayton, OH	145	106	31	5	2	1	11	Pueblo, CO	27	24	3	—	—	—	1
Detroit, MI	159	78	50	17	6	8	2	Salt Lake City, UT	91	61	17	7	5	1	4
Evansville, IN	49	37	9	2	1	—	4	Tucson, AZ	138	106	22	6	3	—	6
Fort Wayne, IN	68	43	16	3	2	4	3	<b>Pacific</b>	1,702	1,155	394	86	34	33	144
Gary, IN	4	1	1	1	—	1	—	Berkeley, CA	14	8	4	—	—	2	1
Grand Rapids, MI	62	45	13	1	1	2	7	Fresno, CA	117	78	26	5	3	5	6
Indianapolis, IN	191	131	44	7	6	3	12	Glendale, CA	42	32	7	1	—	2	4
Lansing, MI	44	33	7	3	1	—	4	Honolulu, HI	64	43	11	9	1	—	6
Milwaukee, WI	64	42	14	6	1	1	2	Long Beach, CA	57	39	14	1	1	2	5
Peoria, IL	47	35	10	2	—	—	5	Los Angeles, CA	272	169	68	18	8	9	22
Rockford, IL	67	45	19	3	—	—	1	Pasadena, CA	27	21	4	1	—	1	2
South Bend, IN	47	31	15	1	—	—	3	Portland, OR	103	67	31	3	2	—	4
Toledo, OH	94	69	17	5	3	—	6	Sacramento, CA	237	149	62	16	7	3	26
Youngstown, OH	56	43	13	—	—	—	2	San Diego, CA	144	104	31	4	2	3	16
<b>W.N. Central</b>	539	359	121	26	13	20	41	San Francisco, CA	119	92	18	6	2	1	18
Des Moines, IA	28	22	6	—	—	—	2	San Jose, CA	182	134	35	8	2	3	17
Duluth, MN	43	29	12	2	—	—	1	Santa Cruz, CA	27	25	2	—	—	—	1
Kansas City, KS	30	17	10	1	2	—	3	Seattle, WA	116	71	32	8	5	—	5
Kansas City, MO	101	65	26	4	1	5	11	Spokane, WA	70	51	18	—	1	—	7
Lincoln, NE	32	25	6	—	—	1	1	Tacoma, WA	111	72	31	6	—	2	4
Minneapolis, MN	62	43	9	5	1	4	3	<b>Total<sup>¶</sup></b>	<b>11,269</b>	<b>7,511</b>	<b>2,717</b>	<b>608</b>	<b>235</b>	<b>192</b>	<b>726</b>
Omaha, NE	75	52	17	2	2	2	8								
St. Louis, MO	12	2	4	2	2	2	—								
St. Paul, MN	69	47	15	2	3	2	7								
Wichita, KS	87	57	16	8	2	4	5								

U: Unavailable. —: No reported cases.

\* Mortality data in this table are voluntarily reported from 122 cities in the United States, most of which have populations of >100,000. A death is reported by the place of its occurrence and by the week that the death certificate was filed. Fetal deaths are not included.

† Pneumonia and influenza.

§ Because of changes in reporting methods in this Pennsylvania city, these numbers are partial counts for the current week. Complete counts will be available in 4 to 6 weeks.

¶ Total includes unknown ages.



The *Morbidity and Mortality Weekly Report (MMWR)* Series is prepared by the Centers for Disease Control and Prevention (CDC) and is available free of charge in electronic format. To receive an electronic copy each week, visit *MMWR*'s free subscription page at <http://www.cdc.gov/mmwr/mmwrsubscribe.html>. Paper copy subscriptions are available through the Superintendent of Documents, U.S. Government Printing Office, Washington, DC 20402; telephone 202-512-1800.

Data presented by the Notifiable Disease Data Team and 122 Cities Mortality Data Team in the weekly *MMWR* are provisional, based on weekly reports to CDC by state health departments. Address all inquiries about the *MMWR* Series, including material to be considered for publication, to Editor, *MMWR* Series, Mailstop E-90, CDC, 1600 Clifton Rd., N.E., Atlanta, GA 30333 or to [mmwrq@cdc.gov](mailto:mmwrq@cdc.gov).

All material in the *MMWR* Series is in the public domain and may be used and reprinted without permission; citation as to source, however, is appreciated.

Use of trade names and commercial sources is for identification only and does not imply endorsement by the U.S. Department of Health and Human Services.

References to non-CDC sites on the Internet are provided as a service to *MMWR* readers and do not constitute or imply endorsement of these organizations or their programs by CDC or the U.S. Department of Health and Human Services. CDC is not responsible for the content of these sites. URL addresses listed in *MMWR* were current as of the date of publication.