



# MMWR™

## Morbidity and Mortality Weekly Report

[www.cdc.gov/mmwr](http://www.cdc.gov/mmwr)

Weekly

October 9, 2009 / Vol. 58 / No. 39

### Influenza Vaccination Coverage Among Children and Adults – United States, 2008–09 Influenza Season

Before 2008, the Advisory Committee on Immunization Practices (ACIP) had recommended annual vaccination for influenza for persons aged  $\geq 50$  years, 18–49 years at higher risk for influenza complications, and 6 months–4 years (1). In 2008, ACIP expanded the recommendations to include all children aged 5–18 years, beginning with the 2008–09 season, if feasible, but no later than the 2009–10 season (2). This expansion added 26 million children and adolescents to groups recommended for routine influenza vaccination. To assess vaccination uptake among children and adults during the 2008–09 influenza season, CDC analyzed data from the Behavioral Risk Factor Surveillance System (BRFSS) in 19 states, which represent 43% of the U.S. population. This report summarizes the results of the analysis, which indicated that reported influenza vaccination coverage of  $\geq 1$  doses was 40.9% for ages 6–23 months, 32.0% for 2–4 years, and 20.8% for 5–17 years. Among adults, reported coverage was 32.1% for persons aged 18–49 years with high-risk conditions, 42.3% for persons 50–64 years, and 67.2% for persons  $\geq 65$  years. These results are consistent with previous studies that have found no significant increases in vaccination coverage for any of these age groups over previous seasons (1–5).\* These 2008–09 season estimates provide a baseline for assessing implementation of the 2008 recommendation for school-aged children. Attaining higher coverage rates likely will require additional vaccination programs in schools and expanded vaccination services in provider offices (6,7).

\* CDC. Early release of selected estimates based on data from the January–March 2009 and the January–March 2008 National Health Interview Survey receipt of influenza vaccination. Available, respectively, at [http://www.cdc.gov/nchs/data/nhis/earlyrelease/200909\\_04.pdf](http://www.cdc.gov/nchs/data/nhis/earlyrelease/200909_04.pdf) and at [http://www.cdc.gov/nchs/data/nhis/earlyrelease/200809\\_04.pdf](http://www.cdc.gov/nchs/data/nhis/earlyrelease/200809_04.pdf).

BRFSS is a state-based, random-digit-dialed telephone survey that collects information from approximately 414,000 randomly selected, noninstitutionalized adults aged  $\geq 18$  years.<sup>†</sup> Data are collected monthly in all 50 states, the District of Columbia (DC), Puerto Rico, the U.S. Virgin Islands, and Guam. Collected data are weighted by age, sex, and race/ethnicity to reflect each state's adult population. To determine influenza vaccination status, respondents were asked, "During the past 12 months, have you had a flu shot?" and "During the past 12 months, have you had a flu vaccine that was sprayed in your nose?" Persons who answered "yes" to either question were asked what month and year their most recent influenza vaccination was received. For the January and February 2009 BRFSS survey conducted just before the beginning of the 2009 H1N1 influenza outbreak, 19<sup>§</sup> of the 46 states and DC that were participating volunteered to add two questions to assess seasonal influenza vaccination in children. The questions asked respondents to indicate whether a randomly selected child in each eligible household had received an influenza vaccination within the past 12 months and in what month (for those who

<sup>†</sup> Additional information and survey questions available at <http://www.cdc.gov/brfss>.  
<sup>§</sup> Alaska, California, Connecticut, Delaware, Hawaii, Illinois, Iowa, Kansas, Maine, Michigan, Nevada, New Mexico, Ohio, Texas, Utah, Washington, West Virginia, Wisconsin, and Wyoming.

#### INSIDE

- 1095 [Norovirus Outbreaks on Three College Campuses – California, Michigan, and Wisconsin, 2008](#)
- 1100 [Update on Influenza A \(H1N1\) 2009 Monovalent Vaccines](#)
- 1102 [Availability of Less Nutritious Snack Foods and Beverages in Secondary Schools – Selected States, 2002–2008](#)
- 1105 [Announcements](#)

The *MMWR* series of publications is published by Surveillance, Epidemiology and Laboratory Services, Centers for Disease Control and Prevention (CDC), U.S. Department of Health and Human Services, Atlanta, GA 30333.

**Suggested Citation:** Centers for Disease Control and Prevention. [Article title]. *MMWR* 2009;58:[inclusive page numbers].

### Centers for Disease Control and Prevention

Thomas R. Frieden, MD, MPH  
*Director*

Peter A. Briss, MD, MPH  
*Acting Associate Director for Science*

James W. Stephens, PhD  
*Office of the Associate Director for Science*

Stephen B. Thacker, MD, MSc  
*Acting Deputy Director for  
Surveillance, Epidemiology and Laboratory Services*

### Editorial and Production Staff

Frederic E. Shaw, MD, JD  
*Editor, MMWR Series*

Christine G. Casey, MD  
*Deputy Editor, MMWR Series*

Robert A. Gunn, MD, MPH  
*Associate Editor, MMWR Series*

Teresa F. Rutledge  
*Managing Editor, MMWR Series*

Douglas W. Weatherwax  
*Lead Technical Writer-Editor*

Donald G. Meadows, MA  
Jude C. Rutledge  
*Writers-Editors*

Martha F. Boyd  
*Lead Visual Information Specialist*

Malbea A. LaPete  
Stephen R. Spriggs

Terraye M. Starr  
*Visual Information Specialists*

Kim L. Bright

Quang M. Doan, MBA

Phyllis H. King  
*Information Technology Specialists*

### Editorial Board

William L. Roper, MD, MPH, Chapel Hill, NC, Chairman

Virginia A. Caine, MD, Indianapolis, IN

Jonathan E. Fielding, MD, MPH, MBA, Los Angeles, CA

David W. Fleming, MD, Seattle, WA

William E. Halperin, MD, DrPH, MPH, Newark, NJ

King K. Holmes, MD, PhD, Seattle, WA

Deborah Holtzman, PhD, Atlanta, GA

John K. Iglehart, Bethesda, MD

Dennis G. Maki, MD, Madison, WI

Sue Mallonee, MPH, Oklahoma City, OK

Patricia Quinlisk, MD, MPH, Des Moines, IA

Patrick L. Remington, MD, MPH, Madison, WI

Barbara K. Rimer, DrPH, Chapel Hill, NC

John V. Rullan, MD, MPH, San Juan, PR

William Schaffner, MD, Nashville, TN

Anne Schuchat, MD, Atlanta, GA

Dixie E. Snider, MD, MPH, Atlanta, GA

John W. Ward, MD, Atlanta, GA

had received a vaccination). Weighted data from these 19 states were combined to estimate coverage levels for adults and children for the 2008–09 season. Vaccination coverage estimates are based on vaccinations during August–December.

During the 2008–09 influenza season, the Council of American Survey and Research Organizations (CASRO) state response and cooperation rates<sup>‡</sup> (including median and range for each) for these 19 states were 53.7% (37.9–66.1) and 76.7% (57.8–86.4), respectively. Respondents who reported unknown influenza vaccination status (don't know, refused, missing, or blank or incomplete date of vaccination) (4.8%) were excluded from the analysis. Software for statistical analysis of complex survey data was used to calculate point estimates and 95% confidence intervals. Statistical differences between groups were determined using the t-test ( $p \leq 0.05$ ).

Seasonal influenza vaccination coverage estimates for adults in the 19 states were 67.2% (ages  $\geq 65$  years), 42.3% (50–64 years), 22.2% (18–49 years), and 32.1% (18–49 years, with diabetes, asthma, or heart disease) (Table). Among children, coverage estimates were 40.9% (ages 6–23 months), 32.0% (2–4 years), 20.8% (5–17 years), and 24.0% (6 months–17 years). Among all persons aged  $\geq 6$  months, coverage was higher among non-Hispanic whites (36.7%) compared with non-Hispanic blacks (24.9%) ( $p < 0.001$ ) and Hispanics (22.0%) ( $p < 0.001$ ). Age-specific coverage levels were higher among non-Hispanic whites compared with non-Hispanic blacks for the two oldest age groups (50–64 years and  $\geq 65$  years) ( $p = 0.002$  and  $p = 0.03$ ), and compared with Hispanics for children aged 2–4 years ( $p < 0.001$ ).

During the 2004–05 season, because of a vaccine shortage, BRFSS-estimated coverage levels dropped by 9 percentage points among persons aged  $\geq 65$  years, 20 points among persons aged 50–64 years, and 12 points among persons aged 18–49 years with high-risk conditions. Coverage levels among adults for the past four seasons (Figure) have increased to nearly the same levels of those preceding 2005–04 season. The 2008–09 coverage estimates were still lower than those during 2003–04, the season before the vaccine shortage, by 5.3, 3.2, and 4.7 percentage points, respectively, for the  $\geq 65$ , 50–64, and 18–49 years age groups.

**Reported by:** *GL Euler, DrPH, PJ Lu, PhD, MD, A Shefer, MD, JA Singleton, MS, Immunization Svc Div, A Fiore, MD, Influenza Div, National Center for Immunization and Respiratory Diseases; M Town, MS, L Balluz, ScD, Div of Adult and Community Health, National Center for Chronic Disease Prevention and Health Promotion, CDC.*

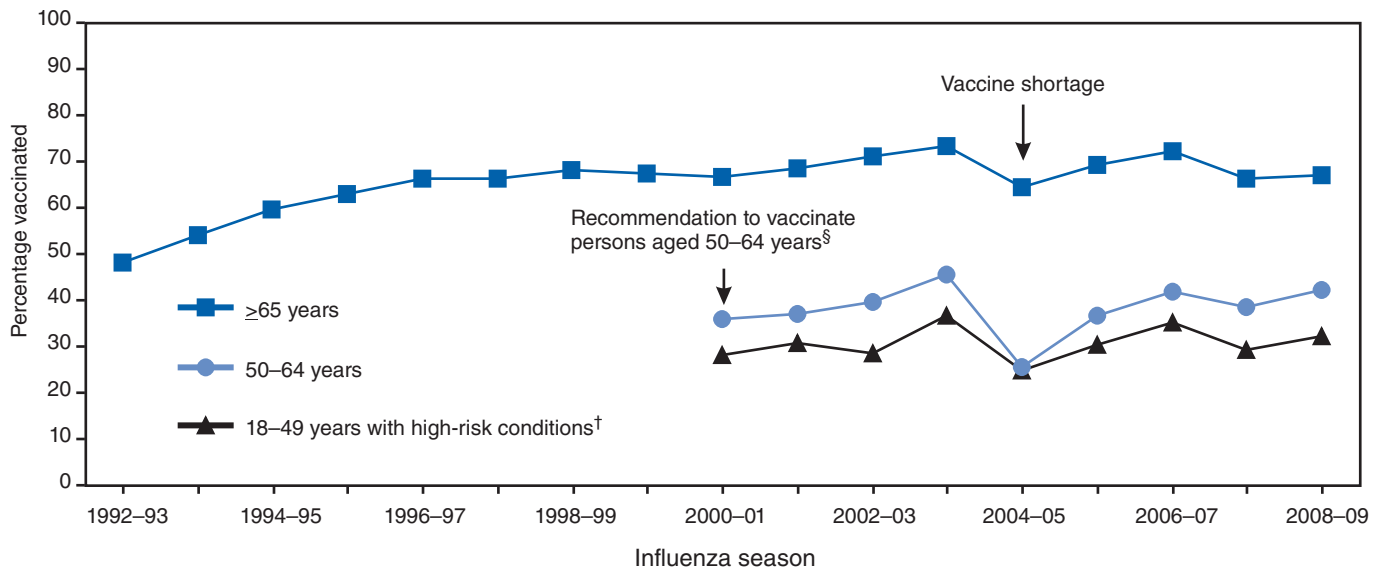
<sup>‡</sup> The CASRO response rate is the product of three other rates: the resolution rate, which is the proportion of telephone numbers that can be identified as either for a business or a residence; the screening rate, which is the proportion of qualified households that complete the screening process; and the cooperation rate, which is the proportion of contacted eligible households for which a completed interview is obtained.

**TABLE. Estimated seasonal influenza vaccination coverage, by age and race/ethnicity — Behavioral Risk Factor Surveillance System (BRFSS), selected states,\* 2008–09 season†**

| Age group                | Total§ |      |             | White, non-Hispanic |      |             | Black, non-Hispanic |      |             | Hispanic |      |             | Other |      |             |
|--------------------------|--------|------|-------------|---------------------|------|-------------|---------------------|------|-------------|----------|------|-------------|-------|------|-------------|
|                          | No.    | %    | (CI¶)       | No.                 | %    | (CI)        | No.                 | %    | (CI)        | No.      | %    | (CI)        | No.   | %    | (CI)        |
| All age groups (≥6 mos)  | 31,130 | 32.6 | (31.6–33.7) | 24,865              | 36.7 | (35.4–37.9) | 1,173               | 24.9 | (20.9–29.0) | 2,536    | 22.0 | (19.1–24.8) | 2,556 | 36.2 | (31.6–40.8) |
| 6 mos–17 yrs             | 5,543  | 24.0 | (21.8–26.4) | 4,042               | 24.9 | (22.5–27.5) | 220                 | 20.0 | (13.0–29.4) | 689      | 18.4 | (13.5–24.5) | 592   | 36.5 | (27.7–48.2) |
| 6–23 mos                 | 416    | 40.9 | (31.1–51.6) | 306                 | 37.2 | (28.2–47.3) | —**                 | —    | —           | —        | —    | —           | 52    | 63.3 | (35.1–84.7) |
| 2–4 yrs                  | 788    | 32.0 | (26.0–38.7) | 529                 | 39.6 | (32.3–47.4) | —                   | —    | —           | 118      | 16.1 | (8.8–27.7)  | 104   | 32.0 | (26.0–38.7) |
| 5–17 yrs                 | 4,339  | 20.8 | (18.4–23.4) | 3,207               | 21.0 | (18.4–23.8) | 175                 | 20.5 | (12.6–31.6) | 521      | 16.8 | (11.5–23.9) | 436   | 30.7 | (21.8–41.3) |
| 18–49 yrs                | 9,493  | 22.2 | (20.6–23.9) | 7,052               | 25.3 | (22.5–27.3) | 414                 | 16.8 | (11.9–23.1) | 1,115    | 14.8 | (11.7–18.6) | 912   | 28.5 | (22.1–35.9) |
| 18–49 yrs at high risk†† | 1,333  | 32.1 | (27.5–37.1) | 943                 | 33.5 | (28.4–39.2) | 74                  | 41.6 | (26.1–58.9) | 162      | 27.2 | (17.1–40.5) | 154   | 29.3 | (15.8–47.7) |
| 50–64 yrs                | 8,422  | 42.3 | (40.1–44.5) | 7,071               | 43.7 | (41.6–45.7) | 306                 | 29.8 | (22.0–38.9) | 437      | 40.6 | (31.7–50.1) | 608   | 44.1 | (34.9–53.8) |
| ≥65 yrs                  | 7,672  | 67.2 | (65.0–69.4) | 6,700               | 69.0 | (67.1–70.9) | 233                 | 56.3 | (45.0–66.9) | 295      | 65.8 | (53.1–76.6) | 444   | 58.4 | (46.4–69.5) |

\* Alaska, California, Connecticut, Delaware, Hawaii, Illinois, Iowa, Kansas, Maine, Michigan, Nevada, New Mexico, Ohio, Texas, Utah, Washington, West Virginia, Wisconsin, and Wyoming.  
 † Interviews were conducted primarily in January and February. Vaccination coverage estimates are based on vaccinations given during August–December, representing approximately 92% of all vaccinations administered during the entire season (August–March), based on 2008 National Health Interview Survey.  
 § Excludes 1,560 (4.8%) respondents who answered “don’t know / not sure” or “refused,” including respondents whose vaccination status or month and year were not recorded in the database.  
 ¶ 95% confidence interval.  
 \*\* Estimate unstable; sample size <30 or relative standard error >0.30.  
 †† Respondents who have diabetes, heart disease, or asthma.

**FIGURE. Estimated influenza vaccination coverage among persons aged ≥18 years — United States, Behavioral Risk Factor Surveillance System (BRFSS), 1992–93 through 2008–09 influenza seasons\***



\* Data for the 2008–09 season were obtained from a survey conducted in 46 states and the District of Columbia, primarily during January and February 2009, and include vaccinations given during August–December 2008. Data for the 2007–08 season are based on February–August interviews only and vaccinations given during September 2007–January 2008. All other data points are based on February–August interviews only and vaccinations given in the preceding 12 months of interview.  
 † Persons who had asthma or diabetes were identified as having high-risk conditions for the 2000–01 through 2004–05 seasons, and persons with asthma, diabetes, or heart diseases were identified as having high-risk conditions for the 2005–06 through 2008–09 seasons.  
 § The Advisory Committee on Immunization Practices added a recommendation to vaccinate all persons aged 50–64 years, beginning with the 2000–01 influenza season. BRFSS also began collecting influenza vaccination data in the 2000–01 influenza season for persons aged 50–64 years and for persons aged 18–49 years with selected high-risk conditions.

**Editorial Note:** CDC routinely monitors influenza vaccination coverage levels using four data sources. The results in this report come from the nationwide BRFSS surveillance system, used here in 19 states that collected influenza vaccination data for all children aged  $\geq 6$  months in 2009. Other sources for monitoring influenza vaccination coverage rates include the National Immunization Survey (NIS), the National Health Interview Survey (NHIS), and eight sentinel immunization information system (IIS) sites located in the United States. These data sources differ in their geographic scope, age groups and population types covered, type of vaccination data, accuracy of reporting, sample representativeness, and timeliness. The special BRFSS survey conducted in early 2009 provided estimates for the 2008–09 season about 1 year earlier than usual, and for children for whom BRFSS has not routinely collected influenza vaccination data.

In 2008, ACIP recommended that all children aged 5–18 years be vaccinated annually for influenza, beginning with the 2008–09 season, if feasible, but no later than the 2009–10 season (2). This report presents findings from the first large-scale, state-based assessment of the response to this recommendation and indicates that approximately 20% of school-aged children were vaccinated during the 2008–09 season. Recent NHIS results demonstrate that influenza vaccine coverage rates among both children and adults were stable over the 2007–08 and 2008–09 seasons.\* The national stability found by NHIS supports the use of these first estimates by BRFSS of school-aged influenza vaccination coverage as an overall baseline for gauging future coverage as the states move into the first full season of the new recommendation.

These BRFSS results generally are consistent with other surveys, including prior BRFSS, NIS, and NHIS surveys, which do not indicate significant increases of vaccination coverage in any of these age groups (3–5).<sup>†</sup> Although recently published coverage rates from IIS sentinel sites results (8) are not directly comparable to the 2008–09 BRFSS results in this report (because of differing methods and sources of data [9], varying completeness and accuracy of vaccination histories, and different populations surveyed), they generally corroborate the BRFSS results. The estimated coverage for  $\geq 1$  doses in this report for children aged 6–23 months (40.9%) is lower than those for the same season in the IIS sentinel sites (47.8%), but estimated coverage in this report is higher for older children, 32.0% versus 27.8% for aged 2–4 years, and 20.8% versus an average of 12.7% for school-aged children.

BRFSS influenza vaccination coverage among adult target groups for the 2008–09 season described in this report were similar to results from prior seasons, and coverage remained below *Healthy People 2010* objectives of 60% for high-risk adults aged  $< 65$  years and 90% for adults aged  $\geq 65$  years

(objective 14-29) (3).\*\* Adult coverage levels have remained below those achieved during the 2003–04 season, before the influenza vaccine shortage of 2004–05, highlighting the difficulties in improving coverage above current levels even among adults for whom recommendations are long standing.

The findings in this report are subject to at least six limitations. First, the BRFSS is a landline telephone survey, and therefore subject to selection bias because of noninclusion of cell-phone-only households and households with no telephone service. Second, nonresponse bias might remain after weighting adjustments. Third, the vaccination coverage estimates reported here are based on data from 19 states. Consequently, those estimates might not be representative of the entire U.S. population. However, seasonal influenza vaccination coverage estimates among adults in the 19 states were similar to those for the 46 states and District of Columbia (within 0.2–2.7 points, depending on the age group), and to the NHIS results (5). Fourth, influenza vaccination status was based on self-report, which might result in under- or overreporting because of recall or social desirability bias. Fifth, this survey collected coverage status only through December, although vaccinations continued through March, this underestimates vaccination coverage. However, a comparison using 2008 BRFSS data found that, based on interviews primarily from January and February, coverage among adults was no more than 4 percentage points lower than coverage based on March through August interviews (CDC, unpublished data, 2009). Finally, the BRFSS question about child influenza vaccination asks for the date of the most recent flu vaccination received during the 12 months before the day of the interview; consequently, full vaccination status among children aged 6 months–8 years, who require 2 vaccine doses in their first season to be vaccinated fully, could not be determined.

Reminder and recall systems and standing orders programs have been shown to be effective in all age groups (7). Wider use of these interventions can achieve higher coverage among children and adults recommended for influenza vaccination (1). Vaccination programs in schools and other community settings supplementing vaccination services routinely provided in health-care provider offices and public health clinics (1,6,7) also can increase coverage.

\*\* CDC data for the 2007–08 season were in preparation for publication at the time of this report.

## References

1. CDC. Prevention and control of seasonal influenza with vaccines: recommendations of the Advisory Committee on Immunization Practices (ACIP), 2009. MMWR 2009;58(No. RR-8).
2. CDC. Prevention and control of influenza: recommendations of the Advisory Committee on Immunization Practices (ACIP), 2008. MMWR 2008;57(No. RR-7).



3. CDC. State-specific influenza vaccination coverage among adults—United States, 2006–07 influenza season. *MMWR* 2008;57:1033–9.
4. CDC. Influenza vaccination coverage among children aged 6–23 months—United States, 2007–08 influenza season. *MMWR* 2009;58:1063–6.
5. CDC. Vaccination coverage estimates from the National Health Interview Survey: United States, 2008. (Updated July 22, 2009.) Available at [http://www.cdc.gov/nchs/data/hestat/vaccine\\_coverage.htm](http://www.cdc.gov/nchs/data/hestat/vaccine_coverage.htm).
6. Rand CM, Szilagyi PG, Yoo BK, Auinger P, Albertin C, Coleman MS. Additional visit burden for universal influenza vaccination of U.S. school-aged children and adolescents. *Arch Pediatr Adolesc Med* 2008;162:1048–55.
7. Pickering LK, Baker CJ, Freed GL, et al. Immunization programs for infants, children, adolescents, and adults: clinical practice guidelines by the Infectious Disease Society of America. *Clin Infect Dis* 2009;49:817–40.
8. CDC. Influenza vaccination coverage among children aged 6 months–18 years—eight immunization information system sentinel sites, United States, 2008–09 influenza season. *MMWR* 2009;58:1059–62.
9. Shinall M, Plosa EJ, Poehling KA. Validity of parental report of influenza vaccination in children aged 6 to 59 months of age. *Pediatrics* 2007;120:e783–7.

---

## Norovirus Outbreaks on Three College Campuses — California, Michigan, and Wisconsin, 2008

Noroviruses are the most common cause of outbreaks of acute gastroenteritis worldwide (1). Norovirus outbreaks affect persons of all ages and occur in a wide variety of settings (e.g., nursing homes, hospitals, restaurants, communities, schools, day care centers, military barracks, and cruise ships) (2). During fall 2008, three norovirus outbreaks occurring on college campuses in California, Michigan, and Wisconsin were reported to CDC. Public health investigations led by the respective state and local health departments were conducted to characterize the extent of the outbreaks and implement appropriate control measures. This report summarizes the investigations of these outbreaks, which resulted in a total of approximately 1,000 cases of reported illness, including at least 10 hospitalizations, and prompted closure of one of the three campuses. Median duration of the three outbreaks was 19 days (range: 16–20 days), and the attack rates ranged from 1.5% to 12.9%. Because of the potential for widespread infection and rapid transmission on college campuses, efforts to prevent and control norovirus outbreaks in these settings should focus on promoting hand hygiene, environmental disinfection, and exclusion of ill food workers.

### California

On October 3, 2008, the Los Angeles County Department of Public Health (LACDPH) was notified by a local university (enrollment: approximately 32,000) of at least 30 students

visiting the student health center or local emergency departments with symptoms of acute gastroenteritis consistent with norovirus infection. LACDPH arranged collection of stool specimens for diagnoses, performed on-site interviews with ill students, and monitored daily reports of gastrointestinal illness from the student health center, local hospitals, and residence hall advisors. LACDPH made multiple site visits to inspect dining halls and dormitories and to monitor stadium food preparation and janitorial services during football games held on October 4 and 11. Alcohol-based hand sanitizers were installed in numerous cafeterias, classrooms, and sports venues. All students were asked via a single e-mail message from the campus administration to complete a web-based survey, which was used for case ascertainment and risk factor analysis. Persons with suspected acute gastroenteritis reported to LACDPH also were interviewed either in person or by telephone.

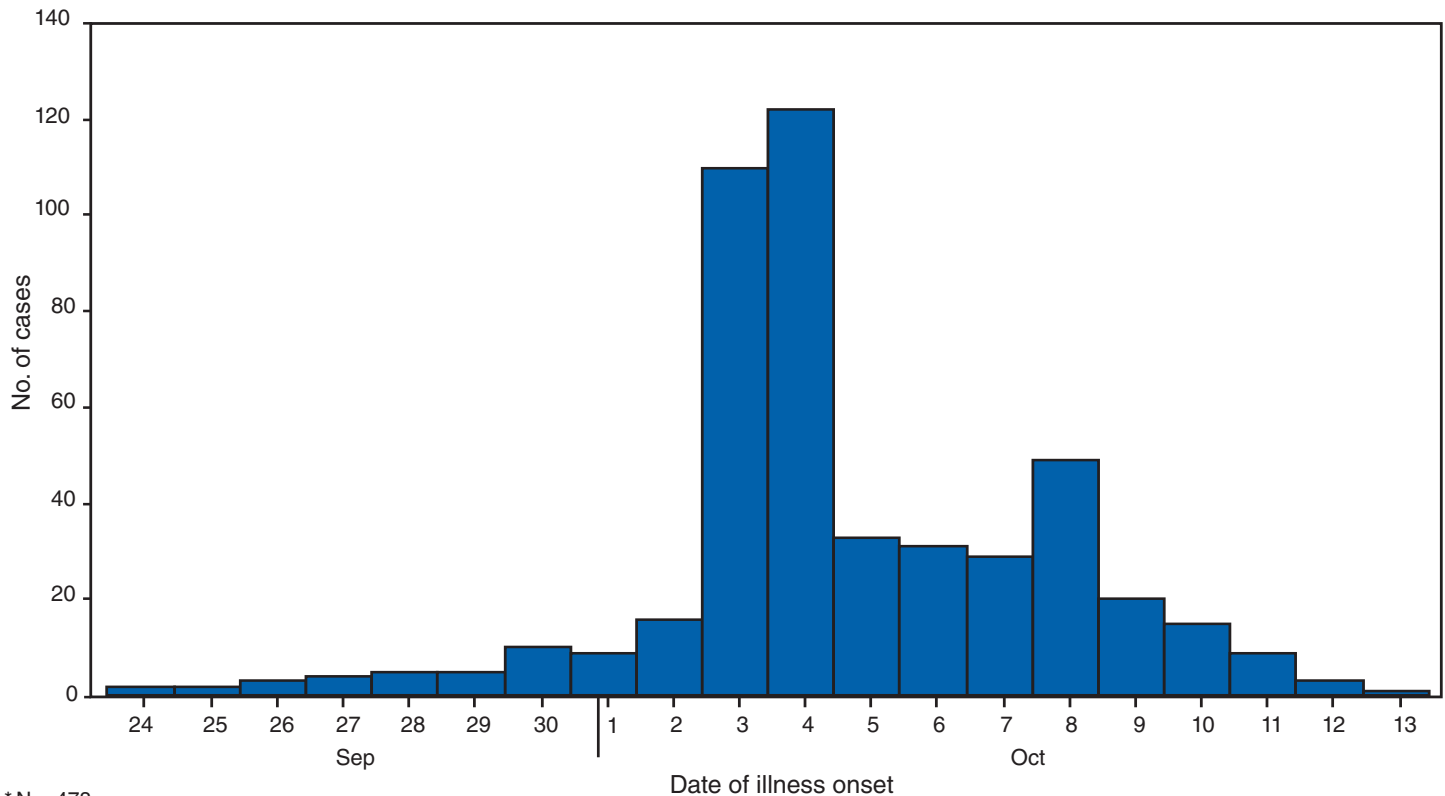
A case of acute gastroenteritis was defined as either 1) vomiting and diarrhea or 2) vomiting or diarrhea with at least two of the following symptoms: stomach cramps, nausea, fever, body aches, headache, and fatigue. A total of 5,227 students (16% of all students) completed the web-based survey, of whom 440 (8.4%) met the case definition. Illness onsets occurred during September 24–October 13 (Figure 1). Of 43 students interviewed directly by LACDPH, 38 additional cases were identified, resulting in a total case count of 478 and an overall campus attack rate of 1.5%. Among the patients, symptoms included nausea (87%), fatigue (83%), vomiting (78%), stomach cramps (73%), diarrhea (70%), headache (61%), body aches (55%), and subjective fever (47%). Mean duration of symptoms was 2.4 days. Mean age of patients was 20.4 years; 64% were female.

A total of 185 patients (39%) sought medical attention at the student health center, 35 (7.3%) visited an emergency department, and 10 (2.1%) were hospitalized for dehydration. Of 10 patients for whom stool specimens were submitted, six were positive for norovirus by real-time reverse transcription–polymerase chain reaction (rRT-PCR). All six had matching genetic sequences classified as GII.6 Seacroft, a strain that had not been found previously in California. A cohort study was conducted using data collected through the web-based survey to assess potential exposures that might have produced a spike in cases with illness onset October 3. However, no single event, residence hall, or eating venue was implicated as a significant risk factor, and no ill food handler was identified in the investigation.

### Michigan

On November 6, 2008, the Ottawa County Health Department (OCHD) was notified by the medical clinic at a

**FIGURE 1. Number\* of acute gastroenteritis cases† among students on a college campus, by date of illness onset — California, September–October 2008**



\* N = 478.

† A case of acute gastroenteritis was defined as 1) vomiting and diarrhea or 2) vomiting or diarrhea with at least two of the following symptoms: stomach cramps, nausea, fever, body aches, headache, and fatigue.

college (enrollment: approximately 3,000) of a sudden increase in the number of students reporting acute diarrhea and vomiting, from a baseline daily average of two to five cases to 60 cases on 1 day, November 6. OCHD reported this increased activity to the Michigan Department of Community Health (MDCH), which initiated an investigation. On November 6, MDCH sent a Health Alert notification to neighboring jurisdictions and a mass fax describing the surge in gastroenteritis along with disinfection guidelines\* to community schools, health-care providers, and local medical facilities.

A case of acute gastroenteritis was defined as illness onset during November 1–21 in a student, faculty member, or staff member with diarrhea or vomiting and one or more of the following symptoms: nausea, body ache, headache, or self-reported fever. On November 7, the cumulative number of reported cases increased sharply to 130, suggesting a possible common-source exposure. Because the campus has only one primary dining facility and parent's day activities were beginning the following day, OCHD investigators were concerned that further spread could occur. To facilitate environmental

disinfection and prevent opportunities for further outbreak amplification via either foodborne or person-to-person transmission in large gatherings, OCHD decided, in consultation with MDCH and administrators from the college, to close the campus until November 12, except for dormitories and the medical clinic.

During the campus closure, e-mail and text messages were sent to students, instructing them to stay in their residence unless illness required medical attention. Faculty and staff members were advised to stay home if ill until at least 72 hours after symptoms had ceased and to exercise proper hand washing techniques. Those experiencing illness were asked to reply electronically to a brief questionnaire requesting symptom history and residence. Parents of students and the news media were sent e-mail messages with ongoing updates on the outbreak, and relevant announcements were posted on the college website. Only take-out or delivery food services were available through dining facilities. Recommendations to students included promptly disinfecting dormitory room and bathroom surfaces and objects with dilute bleach solution, washing soiled linens and clothing, and frequent hand washing.

\* Information available at [http://www.michigan.gov/documents/Guidelines\\_for\\_Environmental\\_Cleaning\\_125846\\_7.pdf](http://www.michigan.gov/documents/Guidelines_for_Environmental_Cleaning_125846_7.pdf).

On the basis of electronic responses ( $n = 205$ ) and direct reporting ( $n = 213$ ) to the medical clinic, 418 (12.9%) of 3,238 students and 33 (5.2%) of 630 faculty and staff members met the outbreak case definition for gastroenteritis (Figure 2). Stool specimens from five patients were submitted for testing; all five were positive for norovirus by rRT-PCR and classified as genotype GI.4. Environmental health investigation of the three dining facilities revealed no violations; however, interviews with dining services staff indicated that three ill food service workers had worked briefly while symptomatic with vomiting and diarrhea at the main campus dining facility on November 4 before being sent home.

## Wisconsin

On November 6, 2008, two students living in the same residence hall (hall A; population: 1,150) of a large university (enrollment: approximately 42,000) visited campus health services with symptoms of acute gastroenteritis characterized by vomiting, diarrhea, and abdominal pain. The two patients reported that an unspecified number of other students in hall A were ill with similar symptoms. In collaboration with the local and state health departments, campus health services initiated

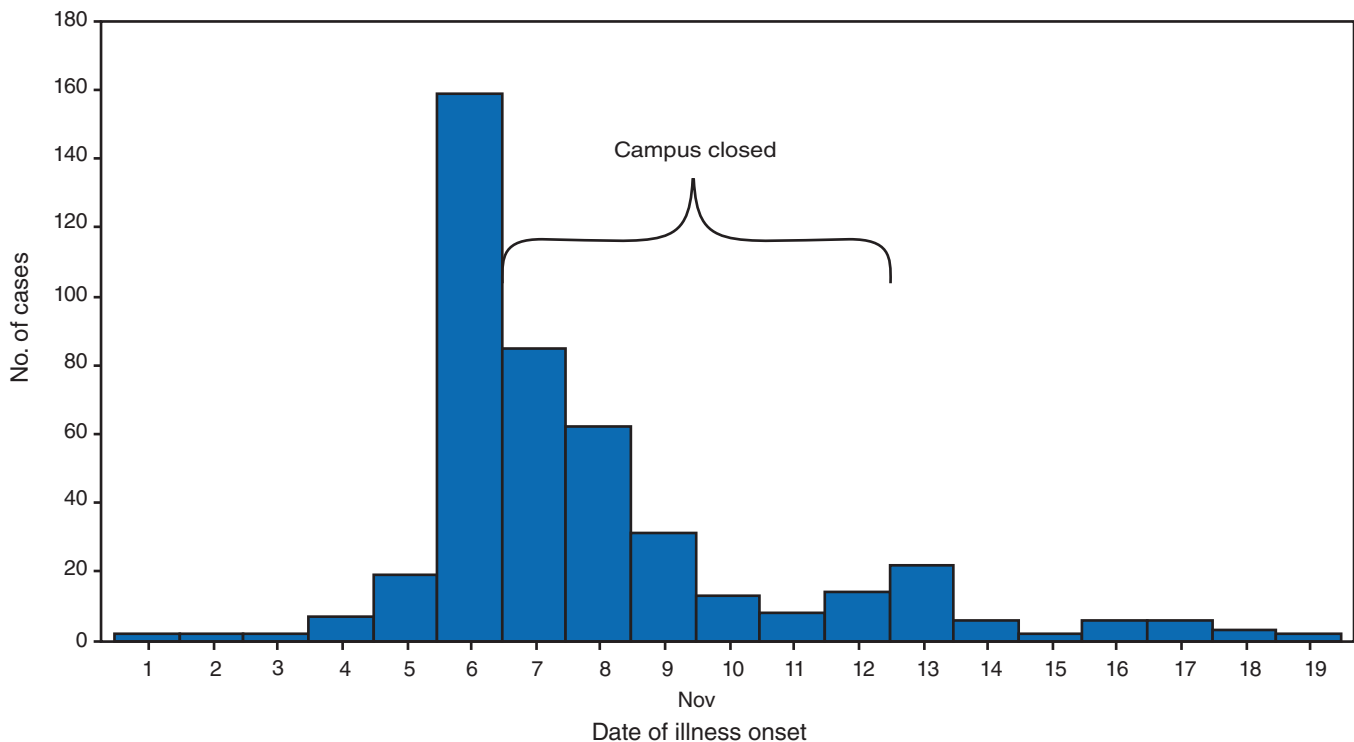
an investigation. Hall A staff members provided daily reports of the number of ill residents. A case of acute gastroenteritis was defined as vomiting or diarrhea (three or more loose stools in 24 hours).

Students were educated regarding hand washing, and cleaning of dormitories, public restrooms, and communal areas was implemented with cleaning agents approved for norovirus by the Environmental Protection Agency.<sup>†</sup> Additional cases continued to be reported during the week of November 10, including cases among students living in neighboring residence halls and a sorority house. To enhance surveillance, campus health services sent an e-mail message on November 14 to all 3,480 residents living in eight neighboring residence halls and to all 2,700 students who were members of a fraternity or sorority. Students who had experienced illness during the preceding 2 weeks were asked to complete an online questionnaire used for case ascertainment and descriptive analyses.

Approximately 200 students completed questionnaires, and 138 persons met the case definition for acute gastroenteritis. An additional 18 cases were identified among students visiting the campus health center, for a total of 156 cases. Among the 138

<sup>†</sup> Information available at [http://www.epa.gov/oppad001/list\\_g\\_norovirus.pdf](http://www.epa.gov/oppad001/list_g_norovirus.pdf).

**FIGURE 2.** Number\* of acute gastroenteritis cases<sup>†</sup> among students, faculty, and staff on a college campus, by date of illness onset — Michigan, November 2008



\* N = 451.

<sup>†</sup> A case of acute gastroenteritis was defined as diarrhea or vomiting with one or more of the following symptoms: nausea, body ache, headache, or self-reported fever.

patients, 93 (67%) lived in hall A, 29 (21%) lived in five of the eight neighboring residence halls, nine (6.5%) lived in a sorority house, and 25 (18%) lived off campus (Figure 3). The overall attack rate was 2.2%. The attack rate was 8.1% among hall A residents and 3.5% among residents of the eight neighboring residence halls. Self-reported signs and symptoms of illness among students included diarrhea (92%), vomiting (88%), abdominal cramps (88%), chills (80%), body aches (81%), and subjective fever (65%). The median duration of illness was 2 days. None of the patients was hospitalized, although 36 (23%) consulted a health-care provider. Stool specimens were obtained from five patients, and two were positive by rRT-PCR for norovirus genogroup II.

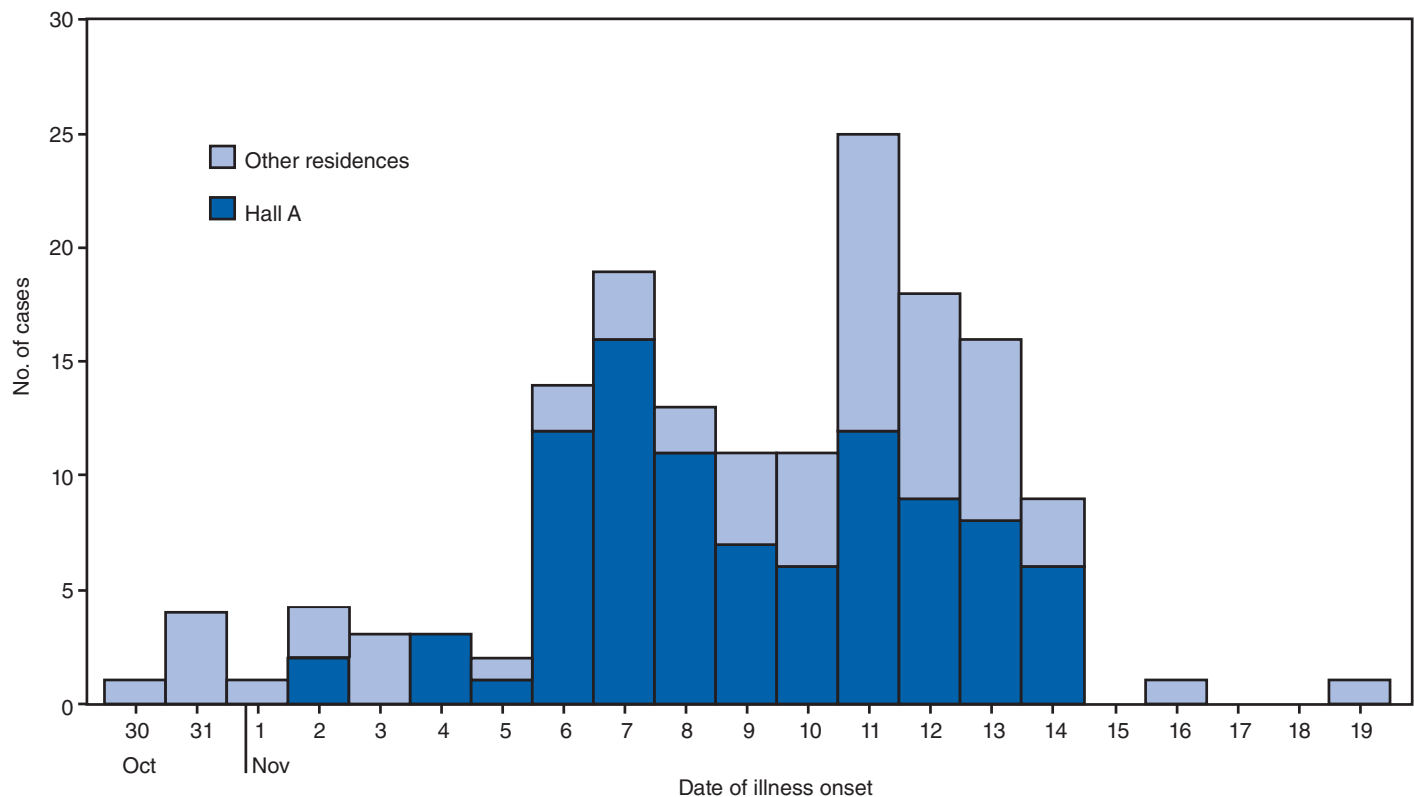
**Reported by:** *CM Roberts, MS, Univ of Wisconsin-Madison, J Archer, MS, Wisconsin Div of Public Health, T Renner, Office of Public Relations, Hope College; PA Heidel, MD, DL VandeBunte, Ottawa County Health Dept; BM Brennan, MSPH, Michigan Dept of Community Health. C Croker, MPH, R Reporter, MD, S Nakagawa-Ota, Los Angeles County Dept of Public Health, California. AJ Hall, DVM, Div of Viral Diseases, National Center for Immunization and Respiratory Diseases, CDC.*

**Editorial Note:** This report highlights the effect of norovirus outbreaks on these three college campuses and the demand for campus medical services. College campuses are at particularly

high risk for norovirus outbreaks because of the extensive opportunities for transmission created by numerous shared exposures and living areas (3–5). Notably, the Wisconsin school had experienced a previous norovirus outbreak in 1999 attributed to direct person-to-person and fomite transmission in the shared living and bathroom areas of a dormitory (6). The ready access to health-care services that is typically present on college campuses also likely encourages increased reporting of illness relative to the general public, which can facilitate outbreak reporting.

The identification of a source of infection and targets for intervention is complicated by the multiple potential routes by which norovirus can be transmitted (1). The California university outbreak exhibited a sharp increase in cases suggestive of a point source, although no single facility or campus event was implicated. During the Michigan college outbreak, foodborne transmission was suggested by reports of ill food workers immediately before the spike in reported norovirus cases; however, no analytic investigation was conducted to support this hypothesis. In contrast, the propagation of cases, association with a specific residence hall, and the shape of the epidemic curve during the Wisconsin university outbreak are suggestive of primarily person-to-person transmission.

**FIGURE 3. Number\* of acute gastroenteritis cases† among students on a college campus, by residence and date of illness onset — Wisconsin, October–November 2008**



\* N = 156.

† A case of acute gastroenteritis was defined as vomiting or diarrhea (three or more loose stools in 24 hours).



Control measures implemented in response to the Michigan outbreak included cancellation of all campus activities and closure of all buildings (excluding dormitories and the medical clinic) to enable extensive disinfection and promote social distancing. During norovirus outbreaks, particularly in institutional settings, temporary closure of public areas for the purpose of disinfection and cancellation of large gatherings often are indicated to help break or slow the cycle of transmission (7). In health-care settings, rapid closure of units experiencing norovirus outbreaks to new admissions has been associated with shorter outbreak duration (8). The number of cases declined after closure of the Michigan campus; however, the direct effect of campus closure on limiting further transmission is unclear.

The findings in this report are subject to at least four limitations. First, analytic studies were not performed during the outbreak investigations at the Michigan and Wisconsin schools, so specific exposures and risk factors could not be assessed. Second, because multiple control measures were implemented simultaneously in response to these three outbreaks, the efficacy of any single intervention could not be determined. Third, the majority of the data were self-reported through mostly passive electronic surveillance surveys that had relatively low response rates, likely resulting in underestimation of cases and attack rates. Finally, different case definitions were used in each of the three outbreaks because no standard case definition for norovirus infection exists. As such, outbreak-specific case definitions typically are developed during suspected norovirus outbreaks and tailored to the desired sensitivity and specificity of the investigation.

Norovirus exhibits many characteristics that can facilitate spread of infection and complicate interventions, including multiple potential modes of transmission, prolonged asymptomatic shedding, environmental stability of the virus, and lack of persistent cross-protective immunity (i.e., failure of prior infection to confer immunity to other norovirus strains) (1). Consistent with recommendations for general norovirus outbreak management (7), strategies to prevent and control norovirus on college campuses should focus on hand hygiene, environmental disinfection, and exclusion of ill food workers (Box). Additionally, the use of e-mail, text messaging, and the Internet all facilitated communication during these outbreaks, although the usefulness of these media for case ascertainment is unclear considering the relatively low response rates. Given the widespread access to these technological resources on college campuses, such methods might be helpful during future outbreaks for rapid health communications and to supplement traditional case ascertainment methods.

#### BOX. CDC recommendations to prevent and control outbreaks of norovirus associated with college campuses

- Promote good hand hygiene, including frequent washing with soap and water and use of alcohol-based hand sanitizers ( $\geq 62\%$  ethanol) as a complement to soap and water washing.
- Discourage sharing of eating utensils, toothbrushes, linens, or other personal items among students, especially when ill.
- Restrict ill students and staff from food preparation activities until at least 72 hours after symptoms have resolved.
- Encourage students to seek appropriate medical care when ill and limit social activities if symptoms are consistent with norovirus infection.
- Disinfect bathrooms and any areas possibly contaminated by ill persons, using a chlorine bleach solution with a concentration of 1,000–5,000 ppm (1:50–1:10 dilution of household bleach [5.25%]) or other approved disinfectant.\*
- Consider closure of specific facilities and/or cancellation of events to help limit transmission during an outbreak.
- Disseminate prevention and control recommendations promptly during an outbreak, employing electronic communication resources (e.g., e-mail, Internet, and text messages) if available.

\* Agents registered as effective against norovirus by the Environmental Protection Agency are listed at [http://www.epa.gov/oppad001/list\\_g\\_norovirus.pdf](http://www.epa.gov/oppad001/list_g_norovirus.pdf). Evidence for efficacy against norovirus usually is based on studies using feline calicivirus (FCV) as a surrogate. However, FCV and norovirus exhibit different physiochemical properties, and whether inactivation of FCV reflects efficacy against norovirus is unclear.

#### Acknowledgments

The findings in this report are based, in part, on contributions by the personnel of University of Southern California, Los Angeles; University of Wisconsin-Madison; and Hope College, Holland, Michigan.

#### References

1. Patel MM, Hall AJ, Vinjé J, Parashar UD. Noroviruses: a comprehensive review. *J Clin Virol* 2009;44:1–8.
2. Widdowson MA, Cramer EH, Hadley L, et al. Outbreaks of acute gastroenteritis on cruise ships and on land: identification of a predominant circulating strain of norovirus—United States, 2002. *J Infect Dis* 2004;190:27–36.
3. Lieb S, Gunn RA, Medina R, et al. Norwalk virus gastroenteritis: an outbreak associated with a cafeteria at a college. *Am J Epidemiol* 1985;121:259–68.
4. Alexander WJ, Holmes JR, Shaw JF, Riley WE, Roper WL. Norwalk virus outbreak at a college campus. *South Med J* 1986;79:33–6, 40.

5. Moe CL, Christmas WA, Echols LJ, Miller SE. Outbreaks of acute gastroenteritis associated with Norwalk-like viruses in campus settings. *J Am Coll Health* 2001;50:57–66.
6. CDC. Outbreaks of Norwalk-like viral gastroenteritis—Alaska and Wisconsin, 1999. *MMWR* 2000;49:207–11.
7. CDC. “Norwalk-like viruses”: public health consequences and outbreak management. *MMWR* 2001;50(No. RR-9).
8. Lopman BA, Reacher MH, Vipond IB, et al. Epidemiology and cost of nosocomial gastroenteritis, Avon, England, 2002–2003. *Emerg Infect Dis* 2004;10:1827–34.

## Update on Influenza A (H1N1) 2009 Monovalent Vaccines

On September 15, 2009, four influenza vaccine manufacturers received approval from the Food and Drug Administration for use of influenza A (H1N1) 2009 monovalent influenza vaccines in the prevention of influenza caused by the 2009 pandemic influenza A (H1N1) virus.\* Both live, attenuated and inactivated influenza A (H1N1) 2009 monovalent vaccine formulations are available; each contains the strain A/California/7/2009(H1N1)pdm. None of the approved influenza A 2009 (H1N1) monovalent vaccines or seasonal influenza vaccines contains adjuvants (1–5). CDC’s Advisory Committee on Immunization Practices has made recommendations previously for which persons should be the initial targets for immunization with influenza A (H1N1) 2009 monovalent vaccines and has issued guidelines on decisions for expansion of vaccination efforts to other population groups (6). Children aged 6 months–9 years receiving influenza A (H1N1) 2009 monovalent vaccines should receive 2 doses, with doses separated by approximately 4 weeks; persons aged ≥10 years should receive 1 dose (1–4).

The approved age groups for use of inactivated influenza A (H1N1) monovalent influenza vaccines differ by manufacturer (Table). Three manufacturers that produce inactivated vaccines approved for prevention of seasonal influenza (6) also produce formulations of influenza A (H1N1) 2009 monovalent influenza vaccines. Vaccine produced by CSL Limited is approved for use in persons aged ≥18 years (1), vaccine produced by Novartis Vaccines and Diagnostics Limited is approved for persons aged ≥4 years (2), and vaccine produced by Sanofi Pasteur, Inc. is approved for persons aged ≥6 months (3). A live attenuated influenza vaccine (LAIV) manufactured by MedImmune LLC is approved for persons aged 2–49 years (1). The 2009 (H1N1) monovalent LAIV has the same age range for use as the seasonal LAIV and should not be used to vaccinate children

aged <2 years, adults aged >49 years, pregnant women, persons with underlying medical conditions that confer a higher risk for influenza complications, or children aged <5 years old with one or more episodes of wheezing in the past year (5).

Influenza A (H1N1) 2009 monovalent vaccine approvals were made on the basis of standards developed for vaccine strain changes for seasonal influenza vaccines, adherence to manufacturing processes, product quality testing, and lot release procedures developed for seasonal vaccines. The age groups, precautions, and contraindications approved for the influenza A (H1N1) 2009 monovalent vaccine are identical to those approved for seasonal vaccines. All influenza vaccines available in the United States for the 2009–10 influenza season are produced using embryonated hen’s eggs and contain residual egg protein.

Preliminary data indicate that the immunogenicity and safety of these vaccines are similar to those of seasonal influenza vaccines. An immunogenicity study of an inactivated influenza A (H1N1) monovalent vaccine manufactured by CSL Limited (Parkville, Victoria, Australia) demonstrated that by day 21 after vaccination, antibody titers of 1:40 or more (hemagglutination-inhibition assay) were observed in 116 (97%) of 120 adults who received the 15 µg dose. Local discomfort (e.g., injection site tenderness or pain) was reported by 46% of subjects, and one or more systemic symptoms (e.g., headache, malaise, or myalgia) by 45% of subjects (7). This safety profile is consistent with results from studies of the seasonal influenza vaccine manufactured by CSL Limited (8). In studies of other seasonal inactivated influenza vaccines, rates of adverse events were not significantly different from placebo injections except for arm soreness and redness at the injection site (9). The National Institute of Allergy and Infectious Diseases (NIAID) reported preliminary results of a study among children aged 6 months–18 years. Among children aged 6–35 months, 3–9 years, and 10–17 years immunized with a 15 µg inactivated influenza A 2009 (H1N1) monovalent vaccine (Sanofi Pasteur, Inc., Swiftwater, PA), 25%, 36% and 76%, respectively, developed antibody titers of 1:40 or more (hemagglutination-inhibition assay) after a single dose of vaccine.† Immunogenicity and safety study results similar to those observed for seasonal vaccines also have been reported by the other manufacturers (MedImmune LLC, Gaithersburg, MD and Novartis Vaccines and Diagnostics, Limited, Liverpool, UK, unpublished data, 2009).

Influenza activity attributed to 2009 H1N1 viruses has increased during September 2009 and is expected to continue through the fall and winter influenza season. Surveillance data indicate that the 2009 H1N1 viruses have not undergone

\*Food and Drug Administration. FDA approves vaccines for 2009 H1N1 influenza virus. Available at <http://www.fda.gov/newsevents/newsroom/pressannouncements/ucm182399.htm>.

† National Institutes of Health. Early results: in children, 2009 H1N1 influenza vaccine works like seasonal flu vaccine. Available at <http://www.nih.gov/news/health/sep2009/niaid-21.htm>.

TABLE. Influenza A (H1N1) 2009 monovalent vaccines approved for use in the United States, October 6, 2009

| Vaccine type      | Manufacturer                              | Presentation              | Mercury content                 |  | Age group     | No. of doses         | Route                      |
|-------------------|---|---------------------------|---------------------------------|--|---------------|----------------------|----------------------------|
|                   |   |                           | ( $\mu\text{g}$ Hg/0.5 mL dose) |  |               |                      |                            |
| Inactivated*      | Sanofi Pasteur                            | 0.25 mL prefilled syringe | 0                               |  | 6–35 mos      | 2 <sup>†</sup>       | Intramuscular <sup>§</sup> |
|                   |   | 0.5 mL prefilled syringe  | 0                               |  | $\geq 36$ mos | 1 or 2 <sup>†</sup>  | Intramuscular              |
|                   |   | 5.0 mL multidose vial     | 25.0                            |  | $\geq 6$ mos  | 1 or 2 <sup>†</sup>  | Intramuscular              |
| Inactivated*      | Novartis Vaccines and Diagnostics Limited | 5.0 mL multidose vial     | 25.0                            |  | $\geq 4$ yrs  | 1 or 2 <sup>†</sup>  | Intramuscular              |
|                   |   | 0.5 mL pre-filled syringe | <1.0                            |  | $\geq 4$ yrs  | 1 or 2 <sup>†</sup>  | Intramuscular              |
| Inactivated*      | CSL Limited                               | 0.5 mL prefilled syringe  | 0                               |  | $\geq 18$ yrs | 1                    | Intramuscular              |
|                   |   | 5.0 mL multidose vial     | 24.5                            |  | $\geq 18$ yrs | 1                    | Intramuscular              |
| LAIV <sup>¶</sup> | MedImmune LLC                             | 0.2-mL sprayer**          | 0                               |  | 2–49 yrs      | 1 or 2 <sup>††</sup> | Intranasal                 |

\* A 0.5-mL dose contains 15  $\mu\text{g}$  hemagglutinin of A/California/7/2009 (H1N1)pdm.

<sup>†</sup> Two doses administered approximately 4 weeks apart ( $\geq 21$  days acceptable) are recommended for children aged 6 months–9 years.

<sup>§</sup> The preferred site for infants and young children is the anterolateral aspect of the thigh.

<sup>¶</sup> Live attenuated influenza vaccine. A 0.2-mL dose contains 10<sup>6.5–7.5</sup> fluorescent focal units of live attenuated influenza virus reassortants of A/California/7/2009 (H1N1)pdm.

\*\* Influenza A (H1N1) 2009 LAIV is shipped refrigerated and stored in the refrigerator at 36°F–46°F (2°C–8°C) after arrival in the immunization clinic. The dose is 0.2 mL divided equally between each nostril. LAIV should not be administered to persons with asthma. Health-care providers should consult the medical record, when available, to identify children aged 2–4 years with asthma or recurrent wheezing that might indicate asthma. In addition, to identify children who might be at greater risk for asthma and possibly at increased risk for wheezing after receiving LAIV, parents or caregivers of children aged 2–4 years should be asked: “In the past 12 months, has a health-care provider ever told you that your child had wheezing or asthma?” Children whose parents or caregivers answer “yes” to this question and children who have asthma or who had a wheezing episode noted in the medical record during the preceding 12 months should not receive LAIV.

<sup>††</sup> Two doses administered approximately 4 weeks apart are recommended for children aged 2–9 years.

substantial antigenic change since they were first characterized in April 2009 and should be well-matched to the monovalent vaccine strain (10). Influenza A (H1N1) 2009 monovalent vaccines will be available in many areas by mid-October. Vaccines against seasonal influenza are available now, and immunization programs and providers should begin or continue administering seasonal influenza vaccines as recommended (5,6). Additional data from clinical trials will be available over the coming weeks, and immunization providers should periodically look for updates on use of influenza A (2009) H1N1 monovalent vaccines at <http://www.cdc.gov/flu>.

## References

1. CSL Biotherapies, Inc. Influenza A (H1N1) 2009 monovalent vaccine [Package insert]. King of Prussia, PA: CSL Biotherapies Inc.; 2009. Available at <http://www.fda.gov/downloads/biologicsbloodvaccines/vaccines/approvedproducts/ucm182401.pdf>. Accessed October 7, 2009.
2. Novartis Vaccines and Diagnostics, Ltd. Influenza A (H1N1) 2009 monovalent vaccine [Package insert]. Cambridge, MA: Novartis Vaccines and Diagnostics, Ltd.; 2009. Available at <http://www.fda.gov/downloads/biologicsbloodvaccines/vaccines/approvedproducts/ucm182242.pdf>. Accessed October 7, 2009.
3. Sanofi Pasteur, Inc. Influenza A (H1N1) 2009 monovalent vaccine [Package insert]. Swiftwater, PA: Sanofi Pasteur Inc.; 2009. Available at <http://www.fda.gov/downloads/biologicsbloodvaccines/vaccines/approvedproducts/ucm182404.pdf>. Accessed October 7, 2009.
4. MedImmune, LLC. Influenza A (H1N1) 2009 monovalent vaccine live, intranasal [Package insert]. Gaithersburg, MD: MedImmune, LLC.; 2009. Available at <http://www.fda.gov/downloads/biologicsbloodvaccines/vaccines/approvedproducts/ucm182406.pdf>. Accessed October 7, 2009.
5. CDC. Prevention and control of seasonal influenza with vaccines: recommendations of the Advisory Committee on Immunization Practices (ACIP), 2009. MMWR 2009;58(No. RR-8).
6. CDC. Use of influenza A (H1N1) 2009 monovalent vaccine: recommendations of the Advisory Committee on Immunization Practices (ACIP), 2009. MMWR 2009;58(No. RR-10).
7. Greenberg ME, Lai MH, Hartel GF, et al. Response after one dose of a monovalent influenza A (H1N1) 2009 vaccine—preliminary report. N Engl J Med 2009 [E-pub]. Available at <http://content.nejm.org/cgi/reprint/NEJMoa0907413.pdf?resourcetype=HWCIT>. Accessed October 7, 2009.
8. Talbot HK, Keitel W, Cate TR, et al. Immunogenicity, safety and consistency of new trivalent inactivated influenza vaccine. Vaccine 2008;26:4057–61.
9. Nichol KL, Margolis KL, Lind A, et al. Side effects associated with influenza vaccination in healthy working adults: a randomized, placebo-controlled trial. Arch Intern Med 1996;156:1546–50.
10. CDC. Update: influenza activity—United States, April–August 2009. MMWR 2009;58:1009–12.



## Availability of Less Nutritious Snack Foods and Beverages in Secondary Schools – Selected States, 2002–2008

On October 2, this report was posted as an MMWR Early Release on the MMWR website (<http://www.cdc.gov/mmwr>).

Foods and beverages offered or sold in schools outside of U.S. Department of Agriculture school meal programs are not subject to federal nutrition standards (1) and generally are of lower nutritional quality than foods and beverages served in the meal programs. To estimate changes in the percentage of schools in which students could not purchase less nutritious foods and beverages, CDC analyzed 2002–2008 survey data from its School Health Profiles for public secondary schools. This report summarizes the results of those analyses, which indicated that, during 2002–2008, the percentage of schools in which students could not purchase candy or salty snacks not low in fat increased in 37 of 40 states. From 2006 to 2008, the percentage of schools in which students could not purchase soda pop or fruit drinks that were not 100% juice increased in all 34 participating states. Despite these improvements, in 2008, the percentage of schools among states in which students could not purchase sports drinks ranged from 22.7% to 84.8% (state median: 43.7%), and the percentage in which students could not purchase soda pop ranged from 25.6% to 92.8% (state median: 62.9%). The percentage of schools in which students could not purchase candy or salty snacks also varied widely among states (range: 18.2%–88.2%, state median: 61.2%). School and public health officials should increase efforts to eliminate availability of less nutritious foods and beverages at school, as recommended by the Institute of Medicine (IOM) (2).

School Health Profiles surveys have been conducted biennially since 1994 to assess school health practices in the United States (3). States, territories, large urban school districts, and tribal governments participate in the surveys, either selecting systematic, equal-probability samples of their secondary schools\* or selecting all public secondary schools within their jurisdiction. Self-administered questionnaires are sent to the principal and lead health education teacher at each selected school and returned to the agency conducting the survey. Principals (or their designees) are asked questions about foods available for purchase by students outside of the school meal

programs in their schools.<sup>†</sup> Participation in School Health Profiles is confidential and voluntary. Follow-up telephone calls and written reminders are used to encourage participation. Data are included in this report only if the state provided appropriate documentation of methods and a school response rate of  $\geq 70\%$ . For states that use a sample-based method, results are weighted to reflect the likelihood of schools being selected and to adjust for differing patterns of nonresponse. For states that conduct a census, results are weighted to adjust for differing patterns of nonresponse.

This report includes data from 40 states<sup>§</sup> that provided weighted Profiles data in 2008 and at least 1 other year during 2002–2006. For each of these states, a composite variable was created to measure the percentage of schools in which students could not purchase candy or salty snacks.<sup>¶</sup> For 31 states with at least 3 years of weighted data, temporal changes during 2002–2008 were analyzed using logistic regression analyses that simultaneously assessed significant ( $p < 0.05$ ) linear and quadratic time effects.<sup>\*\*</sup> For nine states<sup>††</sup> with only 2 years of data, t-test analyses were used to test for significant ( $p < 0.05$ ) differences between years. For 34 states<sup>§§</sup> that had weighted Profiles data in 2006 and 2008, the percentage of schools in which students could not purchase soda pop or sports drinks is reported.<sup>¶¶</sup> Analysis by t-test was used to determine significant ( $p < 0.05$ ) differences between results from 2006 and 2008. Statistical software used for all analyses accounted for the sample design and unequal weights.

<sup>†</sup> Principals were asked the following yes/no questions in 2006 and 2008: “Can students purchase each of the following snack foods or beverages from vending machines or at the school store, canteen, or snack bar: Chocolate candy? Other kinds of candy? Salty snacks that are not low in fat? Soda pop or fruit drinks that are not 100% juice? Sports drinks?”

<sup>§</sup> Alabama, Alaska, Arizona, Arkansas, Connecticut, Delaware, Florida, Hawaii, Idaho, Illinois, Iowa, Kansas, Kentucky, Maine, Massachusetts, Michigan, Minnesota, Mississippi, Missouri, Montana, Nebraska, New Hampshire, New Jersey, New York, North Carolina, North Dakota, Oklahoma, Oregon, Pennsylvania, Rhode Island, South Carolina, South Dakota, Tennessee, Texas, Utah, Vermont, Virginia, Washington, West Virginia, and Wisconsin.

<sup>¶</sup> Defined as chocolate candy or other kinds of candy and defined as salty snacks that are not low in fat.

<sup>\*\*</sup> A quadratic trend indicates a significant but nonlinear trend in the data over time; whereas a linear trend is depicted with a straight line, a quadratic trend is depicted with a curve with one bend. Trends that include significant quadratic and linear components demonstrate nonlinear variation in addition to an overall increase or decrease over time.

<sup>††</sup> Florida, Kansas, Kentucky, Mississippi, New Jersey, Rhode Island, South Dakota, Texas, and West Virginia.

<sup>§§</sup> Alabama, Alaska, Arizona, Arkansas, Connecticut, Delaware, Florida, Hawaii, Idaho, Illinois, Iowa, Kansas, Maine, Massachusetts, Michigan, Mississippi, Missouri, Montana, Nebraska, New Hampshire, North Carolina, North Dakota, Oregon, Pennsylvania, Rhode Island, South Carolina, South Dakota, Tennessee, Texas, Utah, Vermont, Virginia, Washington, and West Virginia.

<sup>¶¶</sup> Soda pop includes fruit drinks that were not 100% juice. Soda pop and sports drinks (which are also high in calories and added sugars) were assessed using identically worded questions only in 2006 and 2008.

\*Middle schools, junior high schools, and high schools with one or more of grades 6–12.

From 2002 to 2008, the percentage of schools in which students could not purchase candy or salty snacks increased in 37 of 40 states. Among the 31 states with at least 3 years of weighted data during 2002–2008, a significant linear increase in the percentage of secondary schools in which students could not purchase candy and salty snacks was detected in all states except Nebraska (Table 1). A significant quadratic trend also was detected in nine of these 31 states. The quadratic trends indicated that, except in Washington, the rate of increase was greatest from 2006 to 2008 and from 2004 to 2008. Among the 34 states with weighted data for both 2006 and 2008, the median percentage of schools in which students could not purchase candy or salty snacks increased from 45.7% in 2006 to 63.5% in 2008 (Table 1).

Compared with 2006, in 2008 the percentage of secondary schools in which students could not purchase soda pop was significantly higher in all 34 states, and the percentage of schools in which students could not purchase sports drinks was significantly higher in 23 states (Table 2). Among the 34 states in 2008, the percentage of schools in which students could not purchase soda pop (range: 25.6%–92.8%) or sports drinks (range: 22.7%–84.8%) varied widely. The median percentage of schools in which students could not purchase soda pop increased from 37.8% in 2006 to 62.9% in 2008, and the median percentage of schools in which students could not purchase sports drinks increased from 28.4% in 2006 to 43.7% in 2008.

**Reported by:** *N Brenner, PhD, T O'Toole, PhD, L Kann PhD, R Lowry, MD, H Wechsler EdD, Div of Adolescent and School Health, National Center for Chronic Disease Prevention and Health Promotion, CDC.*

**Editorial Note:** School food environments and practices that promote consumption of less nutritious foods and beverages are associated with poorer diets and higher body mass index among students (4). The findings in this report indicate that progress was made during 2002–2008 in increasing the percentage of secondary schools in which students cannot purchase less nutritious foods and beverages from vending machines at the school or from a school store, canteen, or snack bar.

This progress, however, has varied among states. For example, in Connecticut, Hawaii, and Maine, in more than 80% of schools students could not purchase candy and salty snacks in 2008; however, this was true in only 18.2% of schools in Utah. Similarly, in 92.8% of schools in Connecticut and 82.4% in Hawaii, but in only 25.6% of schools in Utah, students could not purchase soda pop in 2008. Although Connecticut and Hawaii had nutrition standards for foods sold outside of the school meal programs that specifically addressed calories, fat, saturated fat, trans fat, sugars, sodium, and nutrient content, Utah had no such standards at the time these data were collected. However, in July 2008, Utah enacted a revised policy

**TABLE 1. Percentage of schools in which students could not purchase candy or salty snacks\* from vending machines at the school or at a school store, canteen, or snack bar — 40 states, 2002–2008**

| State (2008 sample size)           | 2002            | 2004            | 2006             | 2008             |
|------------------------------------|-----------------|-----------------|------------------|------------------|
| Alabama (292 schools)              | 13.5            | —†              | 42.5             | 73.9§            |
| Alaska (154)                       | 41.7            | 48.8            | 53.2             | 68.6¶            |
| Arizona (264)                      | 29.3            | 40.8            | 56.2             | 71.7¶            |
| Arkansas (213)                     | 26.4            | 25.2            | 70.0             | 70.8¶            |
| Connecticut (236)                  | 29.6            | 38.8            | 54.3             | 80.4§            |
| Delaware (76)                      | 43.7            | 36.6            | 49.3             | 64.0¶            |
| Florida (310)                      | —               | —               | 57.5             | 57.6             |
| Hawaii (78)                        | 70.5            | —               | 85.8             | 88.2¶            |
| Idaho (239)                        | 24.2            | 25.9            | 28.4             | 39.0¶            |
| Illinois (336**)                   | 40.1            | —               | 45.7             | 57.1¶            |
| Iowa (259)                         | 27.1            | 31.1            | 39.5             | 59.3§            |
| Kansas (245)                       | —               | —               | 31.9             | 44.2††           |
| Kentucky (238)                     | 19.8            | —               | —                | 73.2††           |
| Maine (267)                        | 30.6            | 40.6            | 73.1             | 82.0¶            |
| Massachusetts (292)                | 29.0            | 33.6            | 56.5             | 66.6¶            |
| Michigan (333)                     | 19.4            | 17.5            | 24.7             | 43.4§            |
| Minnesota (300)                    | 15.9            | 20.2            | —                | 48.2¶            |
| Mississippi (216)                  | —               | —               | 23.3             | 72.2††           |
| Missouri (337)                     | 27.6            | 27.8            | 34.2             | 53.3§            |
| Montana (245)                      | 38.8            | 44.1            | 42.6             | 55.2¶            |
| Nebraska (208)                     | 48.8            | 43.6            | 48.8             | 54.1             |
| New Hampshire (183)                | 26.7            | 33.6            | 51.5             | 71.8¶            |
| New Jersey (323)                   | 35.0            | —               | —                | 75.3††           |
| New York (352)                     | 29.6            | 35.6            | —                | 59.4¶            |
| North Carolina (297)               | 26.4            | 25.9            | 43.1             | 51.8¶            |
| North Dakota (164)                 | 48.5            | 49.0            | 52.5             | 68.9§            |
| Oklahoma (276)                     | 15.5            | 14.7            | —                | 46.7§            |
| Oregon (277)                       | —               | 20.9            | 37.2             | 54.0¶            |
| Pennsylvania (500)                 | —               | 26.8            | 45.7             | 65.6¶            |
| Rhode Island (82)                  | —               | —               | 48.0             | 79.3††           |
| South Carolina (230)               | —               | 16.8            | 24.2             | 44.2¶            |
| South Dakota (203)                 | —               | —               | 65.7             | 72.0             |
| Tennessee (345)                    | 20.4            | 23.5            | 30.6             | 71.6§            |
| Texas (372)                        | —               | —               | 41.3             | 56.0††           |
| Utah (183)                         | 7.6             | 7.9             | 14.7             | 18.2¶            |
| Vermont (108)                      | 48.7            | —               | 63.5             | 63.0¶            |
| Virginia (315)                     | 27.9            | —               | 35.9             | 50.6¶            |
| Washington (310)                   | —               | 22.0            | 45.5             | 52.8§            |
| West Virginia (180)                | —               | —               | 62.9             | 72.9††           |
| Wisconsin (293)                    | 31.4            | 33.1            | —                | 57.3¶            |
| <b>No. of participating states</b> | <b>29</b>       | <b>26</b>       | <b>34</b>        | <b>40</b>        |
| <b>State median</b>                | <b>29.0</b>     | <b>29.5</b>     | <b>45.7</b>      | <b>61.2</b>      |
| <b>State range</b>                 | <b>7.6–70.5</b> | <b>7.9–49.0</b> | <b>14.7–85.8</b> | <b>18.2–88.2</b> |

\* Defined as chocolate candy or other kinds of candy and salty snacks that are not low in fat.

† Data not available.

§ Logistic regression analysis detected significant linear and quadratic time effects ( $p < 0.05$ ).

¶ Logistic regression analysis detected significant linear time effects ( $p < 0.05$ ).

\*\* Does not include Chicago Public Schools.

†† Analysis by t-test detected significant differences between 2002 and 2008 for Kentucky and New Jersey ( $p < 0.05$ ) and between 2006 and 2008 for Kansas, Mississippi, Rhode Island, Texas, and West Virginia.



**TABLE 2. Percentage of schools in which students could not purchase soda pop or sports drinks from vending machines at the school or at a school store, canteen, or snack bar — 34 states, 2006–2008**

| State (2008 sample size)     | Soda pop*        |                   | Sports drinks   |                   |
|------------------------------|------------------|-------------------|-----------------|-------------------|
|                              | 2006             | 2008              | 2006            | 2008              |
| Alabama (292 schools)        | 30.3             | 68.3 <sup>†</sup> | 18.1            | 35.2 <sup>†</sup> |
| Alaska (154)                 | 49.6             | 66.0 <sup>†</sup> | 46.7            | 50.2              |
| Arizona (264)                | 56.9             | 81.0 <sup>†</sup> | 41.2            | 54.8 <sup>†</sup> |
| Arkansas (213)               | 35.8             | 52.3 <sup>†</sup> | 41.5            | 48.6              |
| Connecticut (236)            | 60.5             | 92.8 <sup>†</sup> | 42.7            | 84.8 <sup>†</sup> |
| Delaware (76)                | 54.6             | 80.5 <sup>†</sup> | 32.4            | 42.0              |
| Florida (310)                | 42.6             | 58.7 <sup>†</sup> | 34.0            | 30.0              |
| Hawaii (78)                  | 60.5             | 82.4 <sup>†</sup> | 69.5            | 79.6              |
| Idaho (239)                  | 17.5             | 49.2 <sup>†</sup> | 9.8             | 39.8 <sup>†</sup> |
| Illinois (336 <sup>§</sup> ) | 36.3             | 56.6 <sup>†</sup> | 32.5            | 48.4 <sup>†</sup> |
| Iowa (259)                   | 25.1             | 49.1 <sup>†</sup> | 18.7            | 25.5              |
| Kansas (245)                 | 20.9             | 37.4 <sup>†</sup> | 21.1            | 22.7              |
| Maine (267)                  | 74.7             | 84.8 <sup>†</sup> | 40.5            | 45.5              |
| Massachusetts (292)          | 62.6             | 81.0 <sup>†</sup> | 40.9            | 58.6 <sup>†</sup> |
| Michigan (333)               | 32.3             | 57.3 <sup>†</sup> | 21.1            | 31.9 <sup>†</sup> |
| Mississippi (216)            | 21.8             | 74.7 <sup>†</sup> | 21.5            | 46.6 <sup>†</sup> |
| Missouri (337)               | 25.8             | 45.1 <sup>†</sup> | 23.8            | 24.4              |
| Montana (245)                | 28.7             | 53.5 <sup>†</sup> | 14.7            | 24.5 <sup>†</sup> |
| Nebraska (208)               | 21.7             | 37.8 <sup>†</sup> | 18.7            | 29.4 <sup>†</sup> |
| New Hampshire (183)          | 56.6             | 71.5 <sup>†</sup> | 26.9            | 44.0 <sup>†</sup> |
| North Carolina (297)         | 44.0             | 58.0 <sup>†</sup> | 27.8            | 39.1 <sup>†</sup> |
| North Dakota (164)           | 30.9             | 57.3 <sup>†</sup> | 26.6            | 40.4 <sup>†</sup> |
| Oregon (277)                 | 38.0             | 64.4 <sup>†</sup> | 29.1            | 49.4 <sup>†</sup> |
| Pennsylvania (500)           | 49.3             | 71.7 <sup>†</sup> | 37.7            | 48.5 <sup>†</sup> |
| Rhode Island (82)            | 56.0             | 82.5 <sup>†</sup> | 29.0            | 55.3 <sup>†</sup> |
| South Carolina (230)         | 24.0             | 50.4 <sup>†</sup> | 13.4            | 32.9 <sup>†</sup> |
| South Dakota (203)           | 33.4             | 51.9 <sup>†</sup> | 22.9            | 25.3              |
| Tennessee (345)              | 26.7             | 74.0 <sup>†</sup> | 18.1            | 66.1 <sup>†</sup> |
| Texas (372)                  | 43.7             | 70.4 <sup>†</sup> | 29.1            | 47.4 <sup>†</sup> |
| Utah (183)                   | 14.0             | 25.6 <sup>†</sup> | 12.1            | 22.8 <sup>†</sup> |
| Vermont (108)                | 60.7             | 73.5 <sup>†</sup> | 43.7            | 47.6              |
| Virginia (315)               | 37.6             | 54.6 <sup>†</sup> | 33.0            | 43.5 <sup>†</sup> |
| Washington (310)             | 42.2             | 61.4 <sup>†</sup> | 24.9            | 36.1 <sup>†</sup> |
| West Virginia (180)          | 62.7             | 70.5 <sup>†</sup> | 51.4            | 62.0 <sup>†</sup> |
| <b>State median</b>          | <b>37.8</b>      | <b>62.9</b>       | <b>28.4</b>     | <b>43.7</b>       |
| <b>State range</b>           | <b>14.0–74.7</b> | <b>25.6–92.8</b>  | <b>9.8–69.5</b> | <b>22.7–84.8</b>  |

\* Includes fruit drinks that were not 100% juice.

<sup>†</sup> Analysis by t-test detected significant difference between 2006 and 2008 ( $p < 0.05$ ).

<sup>§</sup> Does not include Chicago Public Schools.

setting nutrition standards (5). From 2006 to 2008, the largest increases in the percentage of schools in which students could not purchase candy, salty snacks, and soda pop were observed in Mississippi and Tennessee. These two states have been among those with the highest rates of adult obesity in the United States (6) but have now adopted statewide nutrition standards for foods in schools outside of school meal programs (7,8).

The findings in this report are subject to at least two limitations. First, these data apply only to public secondary schools and, therefore, do not reflect practices at private schools or elementary schools. Second, these data were self-reported by principals or their designees and the accuracy of their identi-

fication of the food products described in this report was not verified by other sources.

In response to growing concern over obesity, federal and state agencies and national nongovernmental organizations have continued to provide technical assistance to schools who seek to adopt and implement nutrition standards. From 2004 to 2009, the number of states with nutrition standards for foods outside of school meal programs increased from six to 27 (9). Despite these improvements, greater efforts are needed to ensure that all foods and beverages offered or sold outside of school meal programs meet nutrition standards, such as those recommended by IOM (2). Schools should implement nutrition standards that provide students with healthy choices throughout the school day and throughout the school campus.

### Acknowledgments

The findings in this report are based, in part, on data collected by state School Health Profiles coordinators.

### References

1. US Department of Agriculture. National School Lunch Program: foods sold in competition with USDA school meal programs. A report to Congress. Washington, DC: US Department of Agriculture; 2001. Available at [http://www.fns.usda.gov/cnd/lunch/\\_private/competitive-foods/report\\_congress.htm](http://www.fns.usda.gov/cnd/lunch/_private/competitive-foods/report_congress.htm).
2. Institute of Medicine Committee on Nutrition Standards for Foods in Schools. Stallings VA, Yaktine AL, eds. Nutrition standards for foods in schools: leading the way toward healthier youth. Washington, DC: Institute of Medicine of the National Academies; 2007.
3. CDC. School Health Profiles 2008: characteristics of health programs among secondary schools. Atlanta, GA: US Department of Health and Human Services, CDC; 2009. Available at <http://www.cdc.gov/healthyyouth/profiles>.
4. Fox MK, Dodd AH, Wilson A, Gleason PM. Association between school food environment and practices and body mass index of US public school children. *J Am Diet Assoc* 2009;109(2 suppl):S108–17.
5. National Association of State Boards of Education. School health policy database. Available at [http://www.nasbe.org/healthy\\_schools/hs/bytopics.php?topicid=3115&catexpand=acdnbtm\\_catc](http://www.nasbe.org/healthy_schools/hs/bytopics.php?topicid=3115&catexpand=acdnbtm_catc). (Accessed October 2, 2009).
6. CDC. State-specific prevalence of obesity among adults—United States, 2007. *MMWR* 2008;57:765–8.
7. Rules of the State Board of Education. Child nutrition programs. Chapter 0520-1-6-.04: Minimum nutritional standards for individual food items sold or offered for sale to pupils in grades pre-kindergarten through eight (effective March 28, 2008). Available at <http://state.tn.us/sos/rules/0520/0520-01/0520-01-06.pdf>. (Accessed October 2, 2009).
8. State Board of Education. Beverage regulations for Mississippi schools; snack regulations for Mississippi schools (approved October 20, 2006). Available at <http://www.cn.mde.k12.ms.us/documents/vendingregformss-schools06.pdf>. (Accessed October 2, 2009).
9. Trust for America's Health. F as in fat: how obesity policies are failing in America. Washington, DC: Trust for America's Health; 2009. (Updated July 2009).

Announcement

## New System for Monitoring Emergency Department Visits for Influenza-Like Illness

CDC has partnered with the International Society for Disease Surveillance and the Public Health Informatics Institute to enhance surveillance for influenza-like illness (ILI) through a system called "Distribute." The Distribute system aggregates information from hospital emergency department (ED) syndromic surveillance systems operated by state and local health departments; the name reflects the shared and distributed responsibilities for developing and managing the system.

This new ILI surveillance system complements the existing CDC influenza surveillance systems by providing further characterization of geographic- and age-specific trends. The number of states or local areas represented on the Distribute web page will increase over time as additional health departments participate in the Distribute system. Information on trends in ILI ED visits from the participating health departments is available at <http://www.ISDSDistribute.org>.

Announcement

## National Latino AIDS Awareness Day – October 15, 2009

October 15 is National Latino AIDS Awareness Day, which is held to raise awareness of the human immunodeficiency virus/acquired immunodeficiency syndrome (HIV/AIDS) epidemic in the Hispanic/Latino population in the United States. In 2006, Hispanics accounted for approximately 17% of the estimated 56,300 new HIV infections (1), and among Hispanic males and females, incidence rates were 2.2 and 3.8 times the rates among white males and females, respectively (2). Male-to-male sexual contact accounted for approximately 72% of new HIV infections among Hispanic men and approximately 55% of all new HIV infections among Hispanics during 2006. Among Hispanic females, high-risk heterosexual

contact accounted for approximately 83% of new infections during 2006.

National Latino AIDS Awareness Day also is a day for encouraging HIV testing among Hispanics. Knowledge of their HIV status enables infected persons to prevent further HIV transmission and promotes entry into HIV/AIDS care. Data from the 34 states with confidential HIV and AIDS reporting from 1996–2005 showed that Hispanics were more likely than non-Hispanic whites to receive an initial HIV diagnosis late in their HIV infection (3). National HIV behavioral surveillance data also have shown that 48% of Hispanic men who have sex with men did not know they were infected (4).

Information about National Latino AIDS Awareness Day is available at <http://www.cdc.gov/features/latinoaidsawareness>. Information about CDC activities and resources supporting National Latino AIDS Awareness Day is available at <http://www.cdc.gov/hiv/hispanics>.

**References**

1. Hall I, Song R, Rhodes P, et al. Estimation of HIV incidence in the United States. *JAMA* 2008;300:520–9.
2. CDC. Subpopulation estimates from the HIV incidence surveillance system—United States, 2006. *MMWR* 2008;57:985–9.
3. CDC. Late HIV testing—34 states, 1996–2005. *MMWR* 2009;58:661–5.
4. CDC. Human immunodeficiency virus (HIV) risk, prevention, and testing behaviors—United States, National HIV Behavioral Surveillance System: men who have sex with men, November 2003–April 2005. *MMWR* 2006;55(No. SS-06).

## Erratum: Vol. 58, No. 37

In the report, "Progress Toward Measles Control — African Region, 2001–2008," on page 1037, under the subheading "Routine Vaccination Activities," the 4th sentence should have read as follows: "As of 2008, **six (13%)** countries provided a second dose of MCV (MCV2) through routine services: South Africa and Swaziland reported MCV2 coverage of 70%, Lesotho reported MCV2 coverage of 80%, Algeria and Seychelles reported MCV2 coverage of >95%, **and Mauritius did not report MCV2 coverage in 2008.**"

**TABLE I. Provisional cases of infrequently reported notifiable diseases (<1,000 cases reported during the preceding year) — United States, week ending October 3, 2009 (39th)\***

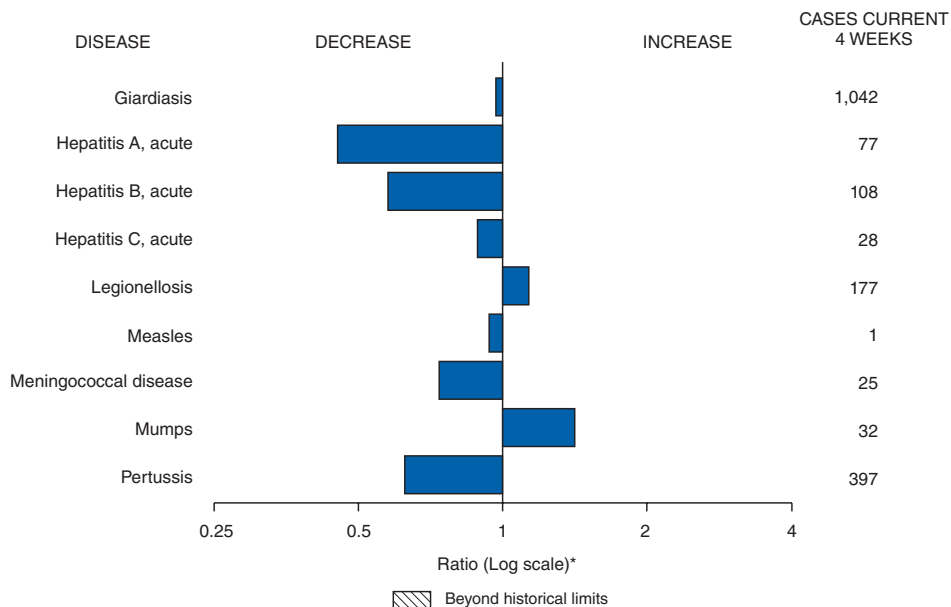
| Disease  | Current week | Cum 2009 | 5-year weekly average† | Total cases reported for previous years |      |       |      |      | States reporting cases during current week (No.)                               |
|--|--------------|----------|------------------------|---|------|-------|------|------|--|
|  |              |          |                        | 2008                                    | 2007 | 2006  | 2005 | 2004 |  |
| Anthrax  | —            | —        | —                      | —                                       | 1    | 1     | —    | —    |  |
| Botulism:  |              |          |                        |   |      |       |      |      |  |
| foodborne  | —            | 12       | 0                      | 17                                      | 32   | 20    | 19   | 16   |  |
| infant   | 1            | 40       | 2                      | 109                                     | 85   | 97    | 85   | 87   | WA (1)   |
| other (wound and unspecified)                            | —            | 17       | 0                      | 19                                      | 27   | 48    | 31   | 30   |  |
| Brucellosis  | —            | 73       | 2                      | 80                                      | 131  | 121   | 120  | 114  |  |
| Chancroid  | —            | 20       | 0                      | 25                                      | 23   | 33    | 17   | 30   |  |
| Cholera  | —            | 7        | 0                      | 5                                       | 7    | 9     | 8    | 6    |  |
| Cyclosporiasis§  | —            | 110      | 1                      | 139                                     | 93   | 137   | 543  | 160  |  |
| Diphtheria   | —            | —        | —                      | —                                       | —    | —     | —    | —    |  |
| Domestic arboviral diseases§,¶:                          |              |          |                        |   |      |       |      |      |  |
| California serogroup                                     | —            | 23       | 4                      | 62                                      | 55   | 67    | 80   | 112  |  |
| eastern equine   | —            | 3        | 0                      | 4                                       | 4    | 8     | 21   | 6    |  |
| Powassan   | —            | 1        | —                      | 2                                       | 7    | 1     | 1    | 1    |  |
| St. Louis  | —            | 7        | 0                      | 13                                      | 9    | 10    | 13   | 12   |  |
| western equine   | —            | —        | —                      | —                                       | —    | —     | —    | —    |  |
| Ehrlichiosis/Anaplasmosis§,**:                           |              |          |                        |   |      |       |      |      |  |
| <i>Ehrlichia chaffeensis</i>                             | 6            | 588      | 17                     | 1,137                                   | 828  | 578   | 506  | 338  | RI (1), NY (1), MD (1), VA (1), GA (1), FL (1)                                 |
| <i>Ehrlichia ewingii</i>                                 | —            | 6        | —                      | 9                                       | —    | —     | —    | —    |  |
| <i>Anaplasma phagocytophilum</i>                         | 2            | 465      | 16                     | 1,026                                   | 834  | 646   | 786  | 537  | RI (1), NY (1)   |
| undetermined   | 2            | 95       | 4                      | 180                                     | 337  | 231   | 112  | 59   | MD (1), TN (1)   |
| <i>Haemophilus influenzae</i> ††                         |              |          |                        |   |      |       |      |      |  |
| invasive disease (age <5 yrs):                           |              |          |                        |   |      |       |      |      |  |
| serotype b   | —            | 18       | 0                      | 30                                      | 22   | 29    | 9    | 19   |  |
| nonserotype b  | —            | 153      | 3                      | 244                                     | 199  | 175   | 135  | 135  |  |
| unknown serotype   | 2            | 173      | 3                      | 163                                     | 180  | 179   | 217  | 177  | NY (1), FL (1)   |
| Hansen disease§  | 1            | 47       | 2                      | 80                                      | 101  | 66    | 87   | 105  | FL (1)   |
| Hantavirus pulmonary syndrome§                           | —            | 7        | 1                      | 18                                      | 32   | 40    | 26   | 24   |  |
| Hemolytic uremic syndrome, postdiarrheal§                | 3            | 148      | 7                      | 330                                     | 292  | 288   | 221  | 200  | MN (2), MO (1)   |
| Hepatitis C viral, acute                                 | 3            | 1,454    | 15                     | 878                                     | 845  | 766   | 652  | 720  | IA (1), MD (1), FL (1)   |
| HIV infection, pediatric (age <13 years)§§               | —            | —        | 2                      | —                                       | —    | —     | 380  | 436  |  |
| Influenza-associated pediatric mortality§,¶¶             | 19           | 148      | 0                      | 90                                      | 77   | 43    | 45   | —    | WI (1), MD (2), NC (1), FL (1), TN (3), OK (1), TX (7), CO (1), AZ (1), AK (1) |
| Listeriosis  | 12           | 534      | 21                     | 759                                     | 808  | 884   | 896  | 753  | NY (2), OH (4), WV (1), FL (1), AL (1), OK (1), CO (1), WA (1)                 |
| Measles***   | 1            | 58       | 0                      | 140                                     | 43   | 55    | 66   | 37   | MN (1)   |
| Meningococcal disease, invasive†††:                      |              |          |                        |   |      |       |      |      |  |
| A, C, Y, and W-135                                       | 1            | 194      | 4                      | 330                                     | 325  | 318   | 297  | —    | CO (1)   |
| serogroup B  | 1            | 102      | 2                      | 188                                     | 167  | 193   | 156  | —    | FL (1)   |
| other serogroup  | —            | 21       | 0                      | 38                                      | 35   | 32    | 27   | —    |  |
| unknown serogroup  | 8            | 346      | 9                      | 616                                     | 550  | 651   | 765  | —    | OH (2), MO (1), NE (1), MD (1), TN (1), TX (1), CA (1)                         |
| Mumps  | 6            | 316      | 17                     | 454                                     | 800  | 6,584 | 314  | 258  | ME (1), NYC (5)  |
| Novel influenza A virus infections                       | —            | §§§      | 0                      | 2                                       | 4    | N     | N    | N    |  |
| Plague   | —            | 6        | 0                      | 3                                       | 7    | 17    | 8    | 3    |  |
| Poliomyelitis, paralytic                                 | —            | —        | 0                      | —                                       | —    | —     | 1    | —    |  |
| Polio virus infection, nonparalytic§                     | —            | —        | —                      | —                                       | —    | N     | N    | N    |  |
| Psittacosis§   | —            | 7        | 0                      | 8                                       | 12   | 21    | 16   | 12   |  |
| Q fever total§,¶¶¶:                                      | 2            | 63       | 2                      | 124                                     | 171  | 169   | 136  | 70   |  |
| acute  | 2            | 53       | 1                      | 110                                     | —    | —     | —    | —    | MN (2)   |
| chronic  | —            | 10       | 0                      | 14                                      | —    | —     | —    | —    |  |
| Rabies, human  | —            | 1        | 0                      | 2                                       | 1    | 3     | 2    | 7    |  |
| Rubella****  | —            | 4        | 0                      | 16                                      | 12   | 11    | 11   | 10   |  |
| Rubella, congenital syndrome                             | —            | 1        | —                      | —                                       | —    | 1     | 1    | —    |  |
| SARS-CoV§,††††   | —            | —        | —                      | —                                       | —    | —     | —    | —    |  |
| Smallpox§  | —            | —        | —                      | —                                       | —    | —     | —    | —    |  |
| Streptococcal toxic-shock syndrome§                      | 1            | 103      | 1                      | 157                                     | 132  | 125   | 129  | 132  | NY (1)   |
| Syphilis, congenital (age <1 yr)                         | —            | 143      | 8                      | 434                                     | 430  | 349   | 329  | 353  |  |
| Tetanus  | —            | 8        | 1                      | 19                                      | 28   | 41    | 27   | 34   |  |
| Toxic-shock syndrome (staphylococcal)§                   | 1            | 60       | 2                      | 71                                      | 92   | 101   | 90   | 95   | OH (1)   |
| Trichinellosis   | —            | 13       | 0                      | 39                                      | 5    | 15    | 16   | 5    |  |
| Tularemia  | —            | 57       | 3                      | 123                                     | 137  | 95    | 154  | 134  |  |
| Typhoid fever  | 4            | 276      | 11                     | 449                                     | 434  | 353   | 324  | 322  | NY (1), MD (1), CA (2)   |
| Vancomycin-intermediate <i>Staphylococcus aureus</i> §   | 1            | 59       | 1                      | 63                                      | 37   | 6     | 2    | —    | FL (1)   |
| Vancomycin-resistant <i>Staphylococcus aureus</i> §      | —            | —        | —                      | —                                       | 2    | 1     | 3    | 1    |  |
| Vibriosis (noncholera <i>Vibrio</i> species infections)§ | 17           | 435      | 8                      | 492                                     | 549  | N     | N    | N    | MN (1), MD (1), GA (1), FL (4), AZ (1), CA (9)                                 |
| Yellow fever   | —            | —        | —                      | —                                       | —    | —     | —    | —    |  |

See Table I footnotes on next page.

**TABLE I. (Continued) Provisional cases of infrequently reported notifiable diseases (<1,000 cases reported during the preceding year) — United States, week ending October 3, 2009 (39th)\***

—: No reported cases. N: Not reportable. Cum: Cumulative year-to-date counts.  
 \* Incidence data for reporting year 2009 is provisional, whereas data for 2004 through 2008 are finalized.  
 † Calculated by summing the incidence counts for the current week, the 2 weeks preceding the current week, and the 2 weeks following the current week, for a total of 5 preceding years. The total sum of incident cases is then divided by 25 weeks. Additional information is available at <http://www.cdc.gov/epo/dphsi/phs/files/5yearweeklyaverage.pdf>.  
 § Not reportable in all states. Data from states where the condition is not reportable are excluded from this table, except starting in 2007 for the domestic arboviral diseases and influenza-associated pediatric mortality, and in 2003 for SARS-CoV. Reporting exceptions are available at <http://www.cdc.gov/epo/dphsi/phs/infdis.htm>.  
 ¶ Includes both neuroinvasive and nonneuroinvasive. Updated weekly from reports to the Division of Vector-Borne Infectious Diseases, National Center for Zoonotic, Vector-Borne, and Enteric Diseases (ArboNET Surveillance). Data for West Nile virus are available in Table II.  
 \*\* The names of the reporting categories changed in 2008 as a result of revisions to the case definitions. Cases reported prior to 2008 were reported in the categories: Ehrlichiosis, human monocytic (analogous to *E. chaffeensis*); Ehrlichiosis, human granulocytic (analogous to *Anaplasma phagocytophilum*), and Ehrlichiosis, unspecified, or other agent (which included cases unable to be clearly placed in other categories, as well as possible cases of *E. ewingii*).  
 †† Data for *H. influenzae* (all ages, all serotypes) are available in Table II.  
 §§ Updated monthly from reports to the Division of HIV/AIDS Prevention, National Center for HIV/AIDS, Viral Hepatitis, STD, and TB Prevention. Implementation of HIV reporting influences the number of cases reported. Updates of pediatric HIV data have been temporarily suspended until upgrading of the national HIV/AIDS surveillance data management system is completed. Data for HIV/AIDS, when available, are displayed in Table IV, which appears quarterly.  
 ¶¶ Updated weekly from reports to the Influenza Division, National Center for Immunization and Respiratory Diseases. Thirty-one influenza-associated pediatric death occurring during the 2009–10 influenza season beginning September 1, 2009, have been reported. One hundred and sixteen influenza-associated pediatric deaths occurring during the 2008–09 influenza season have been reported.  
 \*\*\* The one measles case reported for the current week was indigenous.  
 ††† Data for meningococcal disease (all serogroups) are available in Table II.  
 §§§ CDC discontinued reporting of individual confirmed and probable cases of novel influenza A (H1N1) viruses infections on July 24, 2009. CDC will report the total number of novel influenza A (H1N1) hospitalizations and deaths weekly on the CDC H1N1 influenza website (<http://www.cdc.gov/h1n1flu>).  
 ¶¶¶ In 2008, Q fever acute and chronic reporting categories were recognized as a result of revisions to the Q fever case definition. Prior to that time, case counts were not differentiated with respect to acute and chronic Q fever cases.  
 \*\*\*\* No rubella cases were reported for the current week.  
 †††† Updated weekly from reports to the Division of Viral and Rickettsial Diseases, National Center for Zoonotic, Vector-Borne, and Enteric Diseases.

**FIGURE I. Selected notifiable disease reports, United States, comparison of provisional 4-week totals October 3, 2009, with historical data**



\* Ratio of current 4-week total to mean of 15 4-week totals (from previous, comparable, and subsequent 4-week periods for the past 5 years). The point where the hatched area begins is based on the mean and two standard deviations of these 4-week totals.

**Notifiable Disease Data Team and 122 Cities Mortality Data Team**  
 Patsy A. Hall  
 Deborah A. Adams      Rosaline Dhara  
 Willie J. Anderson      Michael S. Wodajo  
 Jose Aponte              Pearl C. Sharp  
 Lenee Blanton

**TABLE II. Provisional cases of selected notifiable diseases, United States, weeks ending October 3, 2009, and September 27, 2008 (39th)\***

| Reporting area              | Chlamydia <sup>†</sup> |                   |        |          |          | Coccidioidomycosis |                   |     |          |          | Cryptosporidiosis |                  |     |          |          |
|-----------------------------|------------------------|-------------------|--------|----------|----------|--------------------|-------------------|-----|----------|----------|-------------------|------------------|-----|----------|----------|
|                             | Current week           | Previous 52 weeks |        | Cum 2009 | Cum 2008 | Current week       | Previous 52 weeks |     | Cum 2009 | Cum 2008 | Current week      | Previous 52 week |     | Cum 2009 | Cum 2008 |
|                             |                        | Med               | Max    |          |          |                    | Med               | Max |          |          |                   | Med              | Max |          |          |
| <b>United States</b>        | 13,358                 | 22,222            | 25,700 | 842,665  | 886,023  | 173                | 168               | 472 | 8,567    | 4,781    | 116               | 125              | 369 | 4,997    | 6,341    |
| <b>New England</b>          | 923                    | 753               | 1,655  | 30,103   | 27,959   | —                  | 0                 | 1   | 1        | 1        | 5                 | 6                | 35  | 317      | 337      |
| Connecticut                 | 240                    | 222               | 1,306  | 8,742    | 8,277    | N                  | 0                 | 0   | N        | N        | —                 | 0                | 28  | 28       | 41       |
| Maine <sup>§</sup>          | 34                     | 48                | 75     | 1,802    | 1,905    | N                  | 0                 | 0   | N        | N        | 2                 | 0                | 4   | 37       | 39       |
| Massachusetts               | 551                    | 344               | 945    | 14,736   | 13,183   | N                  | 0                 | 0   | N        | N        | —                 | 2                | 15  | 134      | 147      |
| New Hampshire               | —                      | 38                | 61     | 1,178    | 1,546    | —                  | 0                 | 1   | 1        | 1        | 1                 | 1                | 5   | 56       | 49       |
| Rhode Island <sup>§</sup>   | 70                     | 66                | 244    | 2,799    | 2,164    | —                  | 0                 | 0   | —        | —        | 1                 | 0                | 8   | 15       | 7        |
| Vermont <sup>§</sup>        | 28                     | 22                | 53     | 846      | 884      | N                  | 0                 | 0   | N        | N        | 1                 | 1                | 5   | 47       | 54       |
| <b>Mid. Atlantic</b>        | 2,208                  | 2,922             | 6,734  | 114,589  | 109,895  | —                  | 0                 | 0   | —        | —        | 20                | 13               | 30  | 584      | 581      |
| New Jersey                  | 265                    | 388               | 838    | 15,224   | 16,752   | N                  | 0                 | 0   | N        | N        | —                 | 0                | 2   | 8        | 36       |
| New York (Upstate)          | 680                    | 578               | 4,563  | 23,484   | 20,566   | N                  | 0                 | 0   | N        | N        | 12                | 4                | 12  | 177      | 203      |
| New York City               | 814                    | 1,154             | 3,130  | 44,181   | 41,875   | N                  | 0                 | 0   | N        | N        | —                 | 1                | 8   | 57       | 90       |
| Pennsylvania                | 449                    | 832               | 1,072  | 31,700   | 30,702   | N                  | 0                 | 0   | N        | N        | 8                 | 7                | 19  | 342      | 252      |
| <b>E.N. Central</b>         | 1,574                  | 3,474             | 4,072  | 128,141  | 144,971  | —                  | 0                 | 4   | 26       | 37       | 12                | 27               | 79  | 1,039    | 1,677    |
| Illinois                    | 495                    | 1,088             | 1,370  | 39,425   | 44,083   | N                  | 0                 | 0   | N        | N        | —                 | 2                | 11  | 99       | 161      |
| Indiana                     | 439                    | 418               | 713    | 17,513   | 16,173   | N                  | 0                 | 0   | N        | N        | —                 | 3                | 17  | 134      | 145      |
| Michigan                    | 411                    | 854               | 1,332  | 34,418   | 34,112   | —                  | 0                 | 3   | 14       | 28       | 1                 | 5                | 13  | 201      | 208      |
| Ohio                        | 68                     | 801               | 1,231  | 24,134   | 34,530   | —                  | 0                 | 2   | 12       | 9        | 9                 | 8                | 25  | 305      | 541      |
| Wisconsin                   | 161                    | 341               | 494    | 12,651   | 16,073   | N                  | 0                 | 0   | N        | N        | 2                 | 8                | 25  | 300      | 622      |
| <b>W.N. Central</b>         | 630                    | 1,317             | 1,647  | 49,114   | 50,035   | —                  | 0                 | 1   | 8        | 1        | 18                | 17               | 62  | 796      | 774      |
| Iowa                        | 180                    | 192               | 256    | 7,373    | 6,657    | N                  | 0                 | 0   | N        | N        | 3                 | 4                | 14  | 167      | 238      |
| Kansas                      | 26                     | 137               | 526    | 5,753    | 6,885    | N                  | 0                 | 0   | N        | N        | —                 | 1                | 6   | 61       | 69       |
| Minnesota                   | —                      | 254               | 342    | 9,062    | 10,765   | —                  | 0                 | 0   | —        | —        | 12                | 4                | 34  | 246      | 170      |
| Missouri                    | 258                    | 511               | 647    | 19,550   | 18,327   | —                  | 0                 | 1   | 8        | 1        | —                 | 3                | 12  | 140      | 137      |
| Nebraska <sup>§</sup>       | 143                    | 103               | 219    | 3,997    | 3,911    | N                  | 0                 | 0   | N        | N        | 3                 | 2                | 8   | 83       | 91       |
| North Dakota                | 22                     | 32                | 60     | 1,242    | 1,337    | N                  | 0                 | 0   | N        | N        | —                 | 0                | 10  | 7        | 4        |
| South Dakota                | 1                      | 57                | 80     | 2,137    | 2,153    | N                  | 0                 | 0   | N        | N        | —                 | 2                | 10  | 92       | 65       |
| <b>S. Atlantic</b>          | 1,998                  | 4,038             | 5,453  | 147,019  | 181,577  | —                  | 0                 | 1   | 5        | 4        | 21                | 21               | 49  | 805      | 724      |
| Delaware                    | 82                     | 87                | 180    | 3,559    | 2,724    | —                  | 0                 | 1   | 1        | 1        | —                 | 0                | 2   | 8        | 11       |
| District of Columbia        | —                      | 128               | 226    | 4,973    | 5,203    | —                  | 0                 | 0   | —        | —        | —                 | 0                | 2   | 2        | 10       |
| Florida                     | 623                    | 1,421             | 1,630  | 54,777   | 53,392   | N                  | 0                 | 0   | N        | N        | 11                | 8                | 24  | 328      | 341      |
| Georgia                     | 1                      | 708               | 1,909  | 22,859   | 31,654   | N                  | 0                 | 0   | N        | N        | 8                 | 6                | 23  | 284      | 187      |
| Maryland <sup>§</sup>       | —                      | 421               | 772    | 15,545   | 17,436   | —                  | 0                 | 1   | 4        | 3        | —                 | 1                | 5   | 32       | 28       |
| North Carolina              | —                      | 0                 | 1,193  | —        | 25,667   | N                  | 0                 | 0   | N        | N        | —                 | 0                | 16  | 58       | 28       |
| South Carolina <sup>§</sup> | 554                    | 540               | 1,422  | 18,832   | 19,709   | N                  | 0                 | 0   | N        | N        | —                 | 1                | 7   | 34       | 39       |
| Virginia <sup>§</sup>       | 665                    | 609               | 926    | 23,720   | 23,408   | N                  | 0                 | 0   | N        | N        | —                 | 1                | 6   | 46       | 60       |
| West Virginia               | 73                     | 70                | 101    | 2,754    | 2,384    | N                  | 0                 | 0   | N        | N        | 2                 | 0                | 2   | 13       | 20       |
| <b>E.S. Central</b>         | 641                    | 1,749             | 2,210  | 67,802   | 63,825   | —                  | 0                 | 0   | —        | —        | 5                 | 3                | 10  | 158      | 134      |
| Alabama <sup>§</sup>        | 30                     | 473               | 625    | 17,497   | 18,901   | N                  | 0                 | 0   | N        | N        | 1                 | 1                | 4   | 45       | 59       |
| Kentucky                    | 133                    | 248               | 458    | 9,638    | 8,974    | N                  | 0                 | 0   | N        | N        | —                 | 1                | 4   | 44       | 28       |
| Mississippi                 | —                      | 459               | 841    | 17,803   | 14,922   | N                  | 0                 | 0   | N        | N        | 1                 | 0                | 3   | 12       | 16       |
| Tennessee <sup>§</sup>      | 478                    | 573               | 809    | 22,864   | 21,028   | N                  | 0                 | 0   | N        | N        | 3                 | 1                | 5   | 57       | 31       |
| <b>W.S. Central</b>         | 2,214                  | 2,903             | 5,403  | 113,235  | 111,012  | —                  | 0                 | 1   | 1        | 3        | 13                | 11               | 271 | 380      | 1,321    |
| Arkansas <sup>§</sup>       | 327                    | 275               | 417    | 10,955   | 10,690   | N                  | 0                 | 0   | N        | N        | —                 | 1                | 10  | 38       | 59       |
| Louisiana                   | 168                    | 410               | 1,134  | 15,069   | 16,173   | —                  | 0                 | 1   | 1        | 3        | —                 | 1                | 6   | 29       | 47       |
| Oklahoma                    | 292                    | 175               | 2,730  | 10,621   | 10,018   | N                  | 0                 | 0   | N        | N        | 9                 | 2                | 11  | 98       | 106      |
| Texas <sup>§</sup>          | 1,427                  | 1,987             | 2,523  | 76,590   | 74,131   | N                  | 0                 | 0   | N        | N        | 4                 | 7                | 258 | 215      | 1,109    |
| <b>Mountain</b>             | 832                    | 1,501             | 2,145  | 54,696   | 55,505   | 154                | 128               | 369 | 6,742    | 3,242    | 7                 | 9                | 24  | 403      | 474      |
| Arizona                     | 309                    | 464               | 736    | 18,091   | 18,584   | 153                | 126               | 365 | 6,660    | 3,162    | —                 | 1                | 4   | 26       | 73       |
| Colorado                    | —                      | 377               | 727    | 12,882   | 13,172   | N                  | 0                 | 0   | N        | N        | 5                 | 2                | 10  | 114      | 92       |
| Idaho <sup>§</sup>          | 132                    | 64                | 313    | 2,625    | 2,945    | N                  | 0                 | 0   | N        | N        | 1                 | 1                | 7   | 65       | 49       |
| Montana <sup>§</sup>        | 32                     | 56                | 88     | 2,245    | 2,309    | N                  | 0                 | 0   | N        | N        | —                 | 1                | 4   | 46       | 39       |
| Nevada <sup>§</sup>         | 142                    | 172               | 460    | 7,534    | 7,273    | 1                  | 1                 | 4   | 47       | 43       | —                 | 0                | 2   | 16       | 16       |
| New Mexico <sup>§</sup>     | 191                    | 176               | 540    | 6,569    | 5,703    | —                  | 0                 | 2   | 9        | 25       | —                 | 2                | 7   | 95       | 157      |
| Utah                        | 26                     | 93                | 251    | 3,378    | 4,395    | —                  | 0                 | 2   | 25       | 10       | —                 | 0                | 3   | 23       | 31       |
| Wyoming <sup>§</sup>        | —                      | 33                | 97     | 1,372    | 1,124    | —                  | 0                 | 1   | 1        | 2        | 1                 | 0                | 2   | 18       | 17       |
| <b>Pacific</b>              | 2,338                  | 3,611             | 4,684  | 137,966  | 141,244  | 19                 | 42                | 172 | 1,784    | 1,493    | 15                | 11               | 24  | 515      | 319      |
| Alaska                      | —                      | 96                | 199    | 3,193    | 3,511    | N                  | 0                 | 0   | N        | N        | —                 | 0                | 1   | 6        | 3        |
| California                  | 1,668                  | 2,774             | 3,594  | 107,021  | 109,783  | 19                 | 42                | 172 | 1,784    | 1,493    | 14                | 6                | 20  | 314      | 190      |
| Hawaii                      | —                      | 120               | 147    | 4,412    | 4,409    | N                  | 0                 | 0   | N        | N        | —                 | 0                | 1   | 1        | 2        |
| Oregon <sup>§</sup>         | 391                    | 198               | 631    | 7,209    | 7,493    | N                  | 0                 | 0   | N        | N        | 1                 | 3                | 8   | 135      | 53       |
| Washington                  | 279                    | 409               | 571    | 16,131   | 16,048   | N                  | 0                 | 0   | N        | N        | —                 | 1                | 6   | 59       | 71       |
| American Samoa              | —                      | 0                 | 0      | —        | 73       | N                  | 0                 | 0   | N        | N        | N                 | 0                | 0   | N        | N        |
| C.N.M.I.                    | —                      | —                 | —      | —        | —        | —                  | —                 | —   | —        | —        | —                 | —                | —   | —        | —        |
| Guam                        | —                      | 3                 | 8      | —        | 107      | —                  | 0                 | 0   | —        | —        | —                 | 0                | 0   | —        | —        |
| Puerto Rico                 | —                      | 133               | 332    | 5,386    | 5,318    | N                  | 0                 | 0   | N        | N        | N                 | 0                | 0   | N        | N        |
| U.S. Virgin Islands         | —                      | 9                 | 17     | 290      | 503      | —                  | 0                 | 0   | —        | —        | —                 | 0                | 0   | —        | —        |

C.N.M.I.: Commonwealth of Northern Mariana Islands.

U: Unavailable. —: No reported cases. N: Not reportable. Cum: Cumulative year-to-date counts. Med: Median. Max: Maximum.

\* Incidence data for reporting year 2009 is provisional. Data for HIV/AIDS, AIDS, and TB, when available, are displayed in Table IV, which appears quarterly.

<sup>†</sup> Chlamydia refers to genital infections caused by *Chlamydia trachomatis*.

<sup>§</sup> Contains data reported through the National Electronic Disease Surveillance System (NEDSS).



TABLE II. (Continued) Provisional cases of selected notifiable diseases, United States, weeks ending October 3, 2009, and September 27, 2008 (39th)\*

| Reporting area       | Giardiasis   |                   |     |          |          | Gonorrhea    |                   |       |          |          | Haemophilus influenzae, invasive<br>All ages, all serotypes† |                   |     |          |          |
|----------------------|--------------|-------------------|-----|----------|----------|--------------|-------------------|-------|----------|----------|--|-------------------|-----|----------|----------|
|                      | Current week | Previous 52 weeks |     | Cum 2009 | Cum 2008 | Current week | Previous 52 weeks |       | Cum 2009 | Cum 2008 | Current week   | Previous 52 weeks |     | Cum 2009 | Cum 2008 |
|                      |              | Med               | Max |          |          |              | Med               | Max   |          |          |  | Med               | Max |          |          |
| <b>United States</b> | 307          | 333               | 490 | 12,848   | 13,554   | 3,091        | 5,263             | 6,918 | 200,141  | 250,638  | 23   | 60                | 124 | 2,269    | 2,110    |
| <b>New England</b>   | 15           | 29                | 55  | 1,135    | 1,229    | 133          | 94                | 301   | 3,716    | 3,987    | —  | 3                 | 16  | 149      | 121      |
| Connecticut          | —            | 5                 | 14  | 171      | 252      | 64           | 46                | 275   | 1,743    | 1,929    | —  | 0                 | 12  | 43       | 28       |
| Maine§               | 3            | 4                 | 13  | 172      | 132      | 2            | 2                 | 9     | 105      | 74       | —  | 0                 | 2   | 16       | 11       |
| Massachusetts        | —            | 12                | 30  | 499      | 512      | 64           | 38                | 112   | 1,495    | 1,629    | —  | 2                 | 5   | 72       | 58       |
| New Hampshire        | 1            | 2                 | 11  | 131      | 126      | 1            | 2                 | 6     | 82       | 80       | —  | 0                 | 2   | 9        | 9        |
| Rhode Island§        | 3            | 1                 | 6   | 44       | 69       | 1            | 6                 | 19    | 258      | 247      | —  | 0                 | 7   | 6        | 7        |
| Vermont§             | 8            | 3                 | 15  | 118      | 138      | 1            | 1                 | 4     | 33       | 28       | —  | 0                 | 1   | 3        | 8        |
| <b>Mid. Atlantic</b> | 65           | 63                | 116 | 2,393    | 2,491    | 486          | 588               | 1,138 | 23,222   | 24,589   | 7  | 11                | 25  | 451      | 394      |
| New Jersey           | —            | 7                 | 17  | 215      | 396      | 42           | 87                | 122   | 3,218    | 4,020    | —  | 2                 | 7   | 84       | 67       |
| New York (Upstate)   | 47           | 25                | 81  | 984      | 844      | 129          | 106               | 664   | 4,399    | 4,608    | 4  | 3                 | 20  | 110      | 116      |
| New York City        | 5            | 15                | 23  | 589      | 651      | 188          | 210               | 577   | 8,295    | 7,713    | —  | 2                 | 11  | 85       | 68       |
| Pennsylvania         | 13           | 15                | 46  | 605      | 600      | 127          | 189               | 267   | 7,310    | 8,248    | 3  | 4                 | 10  | 172      | 143      |
| <b>E.N. Central</b>  | 28           | 44                | 80  | 1,709    | 2,027    | 549          | 1,080             | 1,436 | 39,841   | 51,941   | 1  | 12                | 28  | 489      | 347      |
| Illinois             | —            | 9                 | 23  | 331      | 543      | 163          | 337               | 448   | 12,074   | 15,389   | —  | 3                 | 9   | 123      | 114      |
| Indiana              | N            | 0                 | 11  | N        | N        | 157          | 145               | 252   | 5,740    | 6,592    | —  | 1                 | 22  | 53       | 57       |
| Michigan             | 4            | 12                | 20  | 465      | 441      | 164          | 281               | 493   | 11,203   | 12,788   | —  | 0                 | 3   | 17       | 18       |
| Ohio                 | 22           | 16                | 28  | 622      | 654      | 14           | 251               | 431   | 7,616    | 12,431   | 1  | 2                 | 6   | 77       | 108      |
| Wisconsin            | 2            | 8                 | 19  | 291      | 389      | 51           | 91                | 140   | 3,208    | 4,741    | —  | 3                 | 20  | 219      | 50       |
| <b>W.N. Central</b>  | 18           | 24                | 141 | 1,152    | 1,527    | 161          | 276               | 393   | 10,572   | 12,641   | 4  | 3                 | 15  | 127      | 152      |
| Iowa                 | 4            | 6                 | 14  | 236      | 249      | 24           | 34                | 53    | 1,225    | 1,163    | —  | 0                 | 0   | —        | 2        |
| Kansas               | —            | 2                 | 11  | 96       | 129      | 12           | 39                | 83    | 1,587    | 1,674    | —  | 0                 | 2   | 13       | 17       |
| Minnesota            | —            | 0                 | 104 | 250      | 509      | —            | 43                | 65    | 1,496    | 2,344    | 1  | 0                 | 10  | 44       | 46       |
| Missouri             | 9            | 7                 | 29  | 368      | 370      | 89           | 129               | 173   | 4,916    | 6,065    | 2  | 1                 | 4   | 44       | 57       |
| Nebraska§            | 5            | 3                 | 9   | 131      | 156      | 36           | 22                | 54    | 1,014    | 1,057    | 1  | 0                 | 4   | 21       | 21       |
| North Dakota         | —            | 0                 | 16  | 9        | 13       | —            | 2                 | 14    | 77       | 90       | —  | 0                 | 4   | 5        | 9        |
| South Dakota         | —            | 1                 | 7   | 62       | 101      | —            | 7                 | 20    | 257      | 248      | —  | 0                 | 0   | —        | —        |
| <b>S. Atlantic</b>   | 75           | 69                | 109 | 2,764    | 2,160    | 593          | 1,157             | 2,042 | 42,392   | 63,777   | 6  | 14                | 31  | 559      | 536      |
| Delaware             | —            | 0                 | 3   | 18       | 30       | 18           | 17                | 37    | 722      | 805      | —  | 0                 | 1   | 3        | 6        |
| District of Columbia | —            | 0                 | 5   | 18       | 54       | —            | 51                | 88    | 1,982    | 1,920    | —  | 0                 | 2   | —        | 5        |
| Florida              | 55           | 37                | 59  | 1,458    | 906      | 200          | 415               | 486   | 15,931   | 17,842   | 3  | 4                 | 10  | 187      | 143      |
| Georgia              | —            | 12                | 67  | 679      | 520      | —            | 243               | 876   | 7,727    | 11,738   | —  | 3                 | 9   | 120      | 107      |
| Maryland§            | 4            | 5                 | 10  | 191      | 204      | —            | 121               | 212   | 4,206    | 4,646    | 1  | 1                 | 6   | 70       | 77       |
| North Carolina       | N            | 0                 | 0   | N        | N        | —            | 0                 | 470   | —        | 11,291   | —  | 1                 | 17  | 61       | 60       |
| South Carolina§      | 3            | 2                 | 8   | 74       | 91       | 171          | 168               | 412   | 5,976    | 7,199    | 1  | 1                 | 5   | 50       | 48       |
| Virginia§            | 10           | 8                 | 31  | 289      | 297      | 193          | 144               | 308   | 5,461    | 7,762    | —  | 1                 | 6   | 42       | 71       |
| West Virginia        | 3            | 1                 | 3   | 37       | 58       | 11           | 10                | 23    | 387      | 574      | 1  | 0                 | 3   | 26       | 19       |
| <b>E.S. Central</b>  | 4            | 8                 | 20  | 283      | 364      | 158          | 516               | 714   | 19,581   | 23,036   | 1  | 3                 | 9   | 124      | 114      |
| Alabama§             | 1            | 3                 | 11  | 130      | 209      | 11           | 139               | 204   | 4,991    | 7,415    | —  | 0                 | 4   | 28       | 19       |
| Kentucky             | N            | 0                 | 0   | N        | N        | 38           | 80                | 135   | 2,809    | 3,490    | —  | 0                 | 5   | 18       | 6        |
| Mississippi          | N            | 0                 | 0   | N        | N        | —            | 145               | 252   | 5,570    | 5,397    | —  | 0                 | 1   | 4        | 13       |
| Tennessee§           | 3            | 4                 | 13  | 153      | 155      | 109          | 162               | 230   | 6,211    | 6,734    | 1  | 2                 | 6   | 74       | 76       |
| <b>W.S. Central</b>  | 13           | 8                 | 22  | 331      | 325      | 618          | 854               | 1,405 | 32,926   | 38,239   | 1  | 2                 | 22  | 88       | 93       |
| Arkansas§            | 9            | 2                 | 8   | 109      | 106      | 103          | 83                | 134   | 3,373    | 3,528    | —  | 0                 | 2   | 13       | 11       |
| Louisiana            | —            | 2                 | 8   | 96       | 110      | 49           | 139               | 420   | 4,845    | 7,001    | —  | 0                 | 1   | 12       | 8        |
| Oklahoma             | 4            | 3                 | 18  | 126      | 109      | 80           | 69                | 612   | 3,628    | 3,679    | 1  | 1                 | 20  | 61       | 66       |
| Texas§               | N            | 0                 | 0   | N        | N        | 386          | 558               | 725   | 21,080   | 24,031   | —  | 0                 | 1   | 2        | 8        |
| <b>Mountain</b>      | 18           | 26                | 57  | 1,123    | 1,207    | 105          | 176               | 265   | 6,405    | 8,774    | 3  | 5                 | 11  | 188      | 235      |
| Arizona              | 1            | 3                 | 9   | 153      | 104      | 44           | 56                | 88    | 2,106    | 2,597    | —  | 1                 | 7   | 64       | 89       |
| Colorado             | 14           | 8                 | 26  | 364      | 421      | —            | 54                | 122   | 1,765    | 2,759    | 1  | 1                 | 6   | 55       | 45       |
| Idaho§               | 2            | 3                 | 10  | 131      | 147      | 3            | 2                 | 13    | 75       | 134      | —  | 0                 | 1   | 4        | 12       |
| Montana§             | —            | 2                 | 10  | 96       | 72       | 2            | 1                 | 6     | 56       | 90       | —  | 0                 | 1   | 1        | 3        |
| Nevada§              | 1            | 2                 | 11  | 86       | 87       | 32           | 30                | 91    | 1,350    | 1,690    | 2  | 0                 | 2   | 16       | 15       |
| New Mexico§          | —            | 2                 | 8   | 86       | 88       | 23           | 24                | 52    | 848      | 1,025    | —  | 0                 | 3   | 19       | 36       |
| Utah                 | —            | 5                 | 12  | 162      | 256      | 1            | 4                 | 15    | 151      | 385      | —  | 1                 | 2   | 26       | 32       |
| Wyoming§             | —            | 1                 | 4   | 45       | 32       | —            | 1                 | 7     | 54       | 94       | —  | 0                 | 1   | 3        | 3        |
| <b>Pacific</b>       | 71           | 51                | 130 | 1,958    | 2,224    | 288          | 546               | 764   | 21,486   | 23,654   | —  | 2                 | 8   | 94       | 118      |
| Alaska               | —            | 2                 | 10  | 85       | 71       | —            | 15                | 24    | 546      | 397      | —  | 0                 | 3   | 13       | 16       |
| California           | 50           | 34                | 56  | 1,298    | 1,479    | 255          | 465               | 657   | 18,061   | 19,393   | —  | 0                 | 3   | 22       | 39       |
| Hawaii               | 2            | 0                 | 1   | 12       | 37       | —            | 11                | 22    | 460      | 475      | —  | 0                 | 3   | 23       | 16       |
| Oregon§              | 7            | 7                 | 17  | 283      | 353      | 20           | 20                | 42    | 727      | 923      | —  | 1                 | 3   | 33       | 45       |
| Washington           | 12           | 7                 | 74  | 280      | 284      | 13           | 45                | 71    | 1,692    | 2,466    | —  | 0                 | 2   | 3        | 2        |
| American Samoa       | —            | 0                 | 0   | —        | —        | —            | 0                 | 0     | —        | 3        | —  | 0                 | 0   | —        | —        |
| C.N.M.I.             | —            | —                 | —   | —        | —        | —            | —                 | —     | —        | —        | —  | —                 | —   | —        | —        |
| Guam                 | —            | 0                 | 0   | —        | —        | —            | 1                 | 15    | —        | 45       | —  | 0                 | 0   | —        | —        |
| Puerto Rico          | 1            | 2                 | 10  | 71       | 171      | —            | 4                 | 24    | 178      | 216      | —  | 0                 | 1   | 3        | 1        |
| U.S. Virgin Islands  | —            | 0                 | 0   | —        | —        | —            | 2                 | 7     | 80       | 98       | N  | 0                 | 0   | N        | N        |

C.N.M.I.: Commonwealth of Northern Mariana Islands.

U: Unavailable. —: No reported cases. N: Not reportable. Cum: Cumulative year-to-date counts. Med: Median. Max: Maximum.

\* Incidence data for reporting year 2009 is provisional.

† Data for *H. influenzae* (age <5 yrs for serotype b, nonserotype b, and unknown serotype) are available in Table I.

§ Contains data reported through the National Electronic Disease Surveillance System (NEDSS).

TABLE II. (Continued) Provisional cases of selected notifiable diseases, United States, weeks ending October 3, 2009, and September 27, 2008 (39th)\*

| Reporting area       | Hepatitis (viral, acute), by type† |                   |    |          |          |              |                   |     |          |          | Legionellosis |                   |     |          |          |
|----------------------|------------------------------------|-------------------|----|----------|----------|--------------|-------------------|-----|----------|----------|---------------|-------------------|-----|----------|----------|
|                      | A                                  |                   |    |          |          | B            |                   |     |          |          |               |                   |     |          |          |
|                      | Current week                       | Previous 52 weeks |    | Cum 2009 | Cum 2008 | Current week | Previous 52 weeks |     | Cum 2009 | Cum 2008 | Current week  | Previous 52 weeks |     | Cum 2009 | Cum 2008 |
|                      | Med                                | Max               |    |          |          | Med          | Max               |     |          |          | Med           | Max               |     |          |          |
| <b>United States</b> | 25                                 | 36                | 89 | 1,391    | 2,016    | 31           | 64                | 197 | 2,335    | 2,851    | 37            | 51                | 143 | 2,212    | 2,321    |
| <b>New England</b>   | 2                                  | 2                 | 8  | 79       | 105      | —            | 1                 | 4   | 29       | 61       | —             | 3                 | 15  | 127      | 163      |
| Connecticut          | 1                                  | 0                 | 2  | 18       | 24       | —            | 0                 | 3   | 11       | 23       | —             | 1                 | 5   | 45       | 30       |
| Maine§               | —                                  | 0                 | 5  | 1        | 6        | —            | 0                 | 2   | 9        | 10       | —             | 0                 | 3   | 6        | 8        |
| Massachusetts        | —                                  | 1                 | 4  | 46       | 50       | —            | 0                 | 2   | 6        | 17       | —             | 1                 | 9   | 50       | 65       |
| New Hampshire        | —                                  | 0                 | 1  | 5        | 11       | —            | 0                 | 2   | 3        | 5        | —             | 0                 | 2   | 9        | 24       |
| Rhode Island§        | 1                                  | 0                 | 1  | 7        | 12       | —            | 0                 | 0   | —        | 4        | —             | 0                 | 12  | 11       | 31       |
| Vermont§             | —                                  | 0                 | 1  | 2        | 2        | —            | 0                 | 1   | —        | 2        | —             | 0                 | 1   | 6        | 5        |
| <b>Mid. Atlantic</b> | 2                                  | 5                 | 11 | 191      | 245      | 3            | 7                 | 17  | 237      | 333      | 12            | 15                | 68  | 856      | 768      |
| New Jersey           | —                                  | 1                 | 5  | 35       | 64       | —            | 1                 | 6   | 59       | 94       | —             | 2                 | 14  | 129      | 97       |
| New York (Upstate)   | 1                                  | 1                 | 4  | 40       | 48       | 1            | 1                 | 11  | 43       | 49       | 10            | 5                 | 29  | 278      | 244      |
| New York City        | —                                  | 2                 | 5  | 60       | 84       | —            | 1                 | 4   | 46       | 75       | —             | 2                 | 20  | 160      | 106      |
| Pennsylvania         | 1                                  | 1                 | 6  | 56       | 49       | 2            | 2                 | 8   | 89       | 115      | 2             | 6                 | 25  | 289      | 321      |
| <b>E.N. Central</b>  | 1                                  | 5                 | 18 | 191      | 272      | 2            | 8                 | 21  | 293      | 394      | 7             | 9                 | 32  | 417      | 517      |
| Illinois             | —                                  | 1                 | 12 | 83       | 97       | —            | 2                 | 6   | 54       | 149      | —             | 1                 | 7   | 61       | 86       |
| Indiana              | —                                  | 0                 | 4  | 13       | 16       | —            | 1                 | 18  | 48       | 28       | —             | 1                 | 5   | 25       | 40       |
| Michigan             | —                                  | 1                 | 5  | 50       | 99       | 1            | 2                 | 8   | 96       | 112      | 1             | 2                 | 11  | 104      | 142      |
| Ohio                 | 1                                  | 1                 | 4  | 34       | 33       | —            | 1                 | 13  | 69       | 91       | 6             | 4                 | 17  | 222      | 218      |
| Wisconsin            | —                                  | 0                 | 4  | 11       | 27       | 1            | 0                 | 4   | 26       | 14       | —             | 0                 | 2   | 5        | 31       |
| <b>W.N. Central</b>  | 1                                  | 2                 | 16 | 94       | 216      | 2            | 3                 | 16  | 130      | 61       | 1             | 2                 | 7   | 73       | 109      |
| Iowa                 | —                                  | 0                 | 2  | 27       | 103      | —            | 0                 | 3   | 25       | 16       | —             | 0                 | 2   | 18       | 15       |
| Kansas               | —                                  | 0                 | 1  | 7        | 14       | —            | 0                 | 2   | 5        | 6        | —             | 0                 | 1   | 3        | 2        |
| Minnesota            | —                                  | 0                 | 12 | 14       | 28       | —            | 0                 | 11  | 20       | 7        | —             | 0                 | 3   | 8        | 11       |
| Missouri             | 1                                  | 0                 | 3  | 25       | 27       | 2            | 1                 | 5   | 61       | 26       | 1             | 1                 | 4   | 33       | 61       |
| Nebraska§            | —                                  | 0                 | 3  | 18       | 40       | —            | 0                 | 2   | 17       | 5        | —             | 0                 | 2   | 9        | 18       |
| North Dakota         | —                                  | 0                 | 2  | —        | —        | —            | 0                 | 1   | —        | 1        | —             | 0                 | 3   | 1        | —        |
| South Dakota         | —                                  | 0                 | 1  | 3        | 4        | —            | 0                 | 1   | 2        | —        | —             | 0                 | 1   | 1        | 2        |
| <b>S. Atlantic</b>   | 8                                  | 7                 | 14 | 309      | 306      | 10           | 18                | 32  | 680      | 697      | 12            | 9                 | 18  | 370      | 369      |
| Delaware             | —                                  | 0                 | 1  | 3        | 6        | U            | 0                 | 1   | U        | U        | 1             | 0                 | 5   | 12       | 10       |
| District of Columbia | U                                  | 0                 | 0  | U        | U        | U            | 0                 | 0   | U        | U        | —             | 0                 | 2   | 8        | 14       |
| Florida              | 4                                  | 4                 | 9  | 146      | 112      | 7            | 6                 | 11  | 227      | 246      | 4             | 3                 | 10  | 135      | 109      |
| Georgia              | —                                  | 1                 | 3  | 46       | 44       | 2            | 3                 | 9   | 111      | 134      | 1             | 1                 | 5   | 38       | 32       |
| Maryland§            | —                                  | 0                 | 4  | 30       | 35       | 1            | 1                 | 5   | 53       | 61       | 4             | 2                 | 10  | 85       | 105      |
| North Carolina       | —                                  | 0                 | 3  | 25       | 52       | —            | 1                 | 19  | 135      | 61       | —             | 0                 | 6   | 39       | 24       |
| South Carolina§      | 2                                  | 0                 | 3  | 31       | 12       | —            | 1                 | 4   | 36       | 53       | —             | 0                 | 1   | 7        | 9        |
| Virginia§            | 1                                  | 1                 | 2  | 26       | 40       | —            | 2                 | 10  | 66       | 81       | 2             | 1                 | 5   | 40       | 42       |
| West Virginia        | 1                                  | 0                 | 1  | 2        | 5        | —            | 1                 | 19  | 52       | 61       | —             | 0                 | 2   | 6        | 24       |
| <b>E.S. Central</b>  | —                                  | 1                 | 3  | 32       | 66       | 4            | 7                 | 11  | 237      | 298      | 1             | 2                 | 12  | 94       | 95       |
| Alabama§             | —                                  | 0                 | 2  | 8        | 9        | —            | 2                 | 7   | 67       | 85       | —             | 0                 | 2   | 10       | 13       |
| Kentucky             | —                                  | 0                 | 1  | 8        | 25       | 2            | 2                 | 7   | 62       | 73       | —             | 1                 | 3   | 39       | 46       |
| Mississippi          | —                                  | 0                 | 1  | 8        | 4        | —            | 1                 | 2   | 21       | 35       | —             | 0                 | 1   | 3        | 1        |
| Tennessee§           | —                                  | 0                 | 2  | 8        | 28       | 2            | 2                 | 6   | 87       | 105      | 1             | 1                 | 9   | 42       | 35       |
| <b>W.S. Central</b>  | —                                  | 3                 | 43 | 104      | 188      | 7            | 10                | 99  | 373      | 554      | —             | 1                 | 21  | 46       | 67       |
| Arkansas§            | —                                  | 0                 | 1  | 5        | 6        | —            | 1                 | 5   | 41       | 48       | —             | 0                 | 2   | 5        | 10       |
| Louisiana            | —                                  | 0                 | 1  | 3        | 11       | —            | 1                 | 4   | 33       | 73       | —             | 0                 | 2   | 4        | 9        |
| Oklahoma             | —                                  | 0                 | 6  | 3        | 7        | 2            | 2                 | 17  | 77       | 82       | —             | 0                 | 6   | 3        | 3        |
| Texas§               | —                                  | 3                 | 37 | 93       | 164      | 5            | 6                 | 76  | 222      | 351      | —             | 1                 | 19  | 34       | 45       |
| <b>Mountain</b>      | 1                                  | 3                 | 8  | 128      | 178      | —            | 3                 | 7   | 104      | 155      | —             | 2                 | 8   | 88       | 65       |
| Arizona              | 1                                  | 2                 | 6  | 60       | 88       | —            | 1                 | 4   | 38       | 60       | —             | 1                 | 4   | 38       | 14       |
| Colorado             | —                                  | 0                 | 5  | 39       | 34       | —            | 0                 | 2   | 20       | 27       | —             | 0                 | 2   | 10       | 7        |
| Idaho§               | —                                  | 0                 | 1  | 3        | 16       | —            | 0                 | 2   | 7        | 7        | —             | 0                 | 1   | 2        | 3        |
| Montana§             | —                                  | 0                 | 1  | 6        | 1        | —            | 0                 | 0   | —        | 2        | —             | 0                 | 2   | 5        | 4        |
| Nevada§              | —                                  | 0                 | 2  | 8        | 10       | —            | 0                 | 3   | 25       | 34       | —             | 0                 | 2   | 10       | 9        |
| New Mexico§          | —                                  | 0                 | 1  | 6        | 15       | —            | 0                 | 2   | 5        | 8        | —             | 0                 | 1   | 3        | 8        |
| Utah                 | —                                  | 0                 | 1  | 4        | 11       | —            | 0                 | 1   | 5        | 12       | —             | 0                 | 4   | 17       | 20       |
| Wyoming§             | —                                  | 0                 | 1  | 2        | 3        | —            | 0                 | 2   | 4        | 5        | —             | 0                 | 2   | 3        | —        |
| <b>Pacific</b>       | 10                                 | 7                 | 17 | 263      | 440      | 3            | 6                 | 36  | 252      | 298      | 4             | 3                 | 12  | 141      | 168      |
| Alaska               | —                                  | 0                 | 1  | 3        | 3        | —            | 0                 | 1   | 2        | 10       | —             | 0                 | 1   | 1        | 1        |
| California           | 8                                  | 5                 | 17 | 208      | 356      | 3            | 4                 | 28  | 187      | 209      | 3             | 3                 | 9   | 110      | 128      |
| Hawaii               | —                                  | 0                 | 1  | 5        | 16       | —            | 0                 | 1   | 4        | 7        | —             | 0                 | 1   | 1        | 8        |
| Oregon§              | —                                  | 0                 | 2  | 14       | 24       | —            | 0                 | 4   | 28       | 35       | —             | 0                 | 2   | 11       | 16       |
| Washington           | 2                                  | 1                 | 4  | 33       | 41       | —            | 1                 | 8   | 31       | 37       | 1             | 0                 | 4   | 18       | 15       |
| American Samoa       | —                                  | 0                 | 0  | —        | —        | —            | 0                 | 0   | —        | —        | N             | 0                 | 0   | N        | N        |
| C.N.M.I.             | —                                  | —                 | —  | —        | —        | —            | —                 | —   | —        | —        | —             | —                 | —   | —        | —        |
| Guam                 | —                                  | 0                 | 0  | —        | —        | —            | 0                 | 0   | —        | —        | —             | 0                 | 0   | —        | —        |
| Puerto Rico          | 1                                  | 0                 | 2  | 18       | 20       | 5            | 0                 | 3   | 17       | 45       | —             | 0                 | 0   | —        | —        |
| U.S. Virgin Islands  | —                                  | 0                 | 0  | —        | —        | —            | 0                 | 0   | —        | —        | —             | 0                 | 0   | —        | —        |

C.N.M.I.: Commonwealth of Northern Mariana Islands.

U: Unavailable. —: No reported cases. N: Not reportable. Cum: Cumulative year-to-date counts. Med: Median. Max: Maximum.

\* Incidence data for reporting year 2009 is provisional.

† Data for acute hepatitis C, viral are available in Table I.

§ Contains data reported through the National Electronic Disease Surveillance System (NEDSS).

TABLE II. (Continued) Provisional cases of selected notifiable diseases, United States, weeks ending October 3, 2009, and September 27, 2008 (39th)\*

| Reporting area       | Lyme disease |                   |       |          |          | Malaria      |                   |     |          |          | Meningococcal disease, invasive†<br>All groups |                   |     |          |          |
|----------------------|--------------|-------------------|-------|----------|----------|--------------|-------------------|-----|----------|----------|--|-------------------|-----|----------|----------|
|                      | Current week | Previous 52 weeks |       | Cum 2009 | Cum 2008 | Current week | Previous 52 weeks |     | Cum 2009 | Cum 2008 | Current week                                   | Previous 52 weeks |     | Cum 2009 | Cum 2008 |
|                      |              | Med               | Max   |          |          |              | Med               | Max |          |          |  | Med               | Max |          |          |
| <b>United States</b> | 357          | 487               | 1,706 | 22,491   | 26,145   | 23           | 23                | 42  | 888      | 923      | 10   | 17                | 48  | 663      | 917      |
| <b>New England</b>   | 40           | 92                | 358   | 4,193    | 9,677    | —            | 1                 | 5   | 33       | 46       | —  | 1                 | 4   | 25       | 24       |
| Connecticut          | —            | 0                 | 82    | —        | 3,316    | —            | 0                 | 4   | 5        | 10       | —  | 0                 | 1   | 2        | 1        |
| Maine§               | 39           | 10                | 76    | 682      | 501      | —            | 0                 | 1   | 1        | 1        | —  | 0                 | 1   | 4        | 4        |
| Massachusetts        | —            | 28                | 245   | 2,251    | 4,046    | —            | 0                 | 3   | 19       | 26       | —  | 0                 | 3   | 12       | 16       |
| New Hampshire        | —            | 12                | 78    | 848      | 1,372    | —            | 0                 | 1   | 2        | 3        | —  | 0                 | 1   | 2        | 2        |
| Rhode Island§        | 1            | 1                 | 78    | 183      | 119      | —            | 0                 | 1   | 4        | 2        | —  | 0                 | 1   | 4        | 1        |
| Vermont§             | —            | 4                 | 36    | 229      | 323      | —            | 0                 | 1   | 2        | 4        | —  | 0                 | 1   | 1        | —        |
| <b>Mid. Atlantic</b> | 267          | 222               | 1,401 | 13,381   | 10,521   | 3            | 5                 | 13  | 221      | 256      | —  | 2                 | 5   | 72       | 100      |
| New Jersey           | —            | 36                | 308   | 3,227    | 2,982    | —            | 0                 | 3   | —        | 58       | —  | 0                 | 2   | 8        | 13       |
| New York (Upstate)   | 172          | 86                | 1,368 | 3,341    | 3,635    | 2            | 1                 | 10  | 40       | 28       | —  | 0                 | 2   | 18       | 25       |
| New York City        | —            | 3                 | 23    | 154      | 664      | —            | 3                 | 11  | 138      | 138      | —  | 0                 | 2   | 12       | 22       |
| Pennsylvania         | 95           | 53                | 625   | 6,659    | 3,240    | 1            | 1                 | 4   | 43       | 32       | —  | 1                 | 4   | 34       | 40       |
| <b>E.N. Central</b>  | 6            | 18                | 193   | 1,756    | 2,026    | 1            | 3                 | 9   | 121      | 122      | 2  | 3                 | 9   | 112      | 159      |
| Illinois             | —            | 1                 | 11    | 100      | 98       | —            | 1                 | 4   | 49       | 63       | —  | 1                 | 6   | 28       | 58       |
| Indiana              | —            | 1                 | 5     | 46       | 36       | —            | 0                 | 3   | 15       | 5        | —  | 0                 | 3   | 28       | 22       |
| Michigan             | —            | 1                 | 9     | 82       | 71       | 1            | 0                 | 3   | 21       | 14       | —  | 0                 | 5   | 18       | 28       |
| Ohio                 | 2            | 0                 | 3     | 40       | 38       | —            | 1                 | 6   | 31       | 24       | 2  | 0                 | 3   | 31       | 32       |
| Wisconsin            | 4            | 14                | 179   | 1,488    | 1,783    | —            | 0                 | 1   | 5        | 16       | —  | 0                 | 2   | 7        | 19       |
| <b>W.N. Central</b>  | —            | 4                 | 336   | 179      | 573      | 8            | 1                 | 7   | 51       | 54       | 2  | 1                 | 9   | 53       | 80       |
| Iowa                 | —            | 1                 | 13    | 79       | 94       | —            | 0                 | 2   | 9        | 8        | —  | 0                 | 1   | 6        | 18       |
| Kansas               | —            | 0                 | 4     | 14       | 9        | —            | 0                 | 2   | 4        | 6        | —  | 0                 | 2   | 8        | 4        |
| Minnesota            | —            | 0                 | 326   | 67       | 454      | 8            | 0                 | 7   | 21       | 21       | —  | 0                 | 4   | 10       | 21       |
| Missouri             | —            | 0                 | 2     | 4        | 4        | —            | 0                 | 2   | 10       | 11       | 1  | 0                 | 3   | 20       | 23       |
| Nebraska§            | —            | 0                 | 3     | 14       | 9        | —            | 0                 | 1   | 6        | 8        | 1  | 0                 | 1   | 6        | 11       |
| North Dakota         | —            | 0                 | 10    | —        | —        | —            | 0                 | 0   | —        | —        | —  | 0                 | 3   | 1        | 1        |
| South Dakota         | —            | 0                 | 1     | 1        | 3        | —            | 0                 | 1   | 1        | —        | —  | 0                 | 1   | 2        | 2        |
| <b>S. Atlantic</b>   | 37           | 61                | 217   | 2,725    | 3,087    | 6            | 6                 | 17  | 264      | 221      | 2  | 2                 | 9   | 119      | 134      |
| Delaware             | 7            | 12                | 63    | 781      | 641      | —            | 0                 | 1   | 4        | 2        | —  | 0                 | 1   | 3        | 2        |
| District of Columbia | —            | 0                 | 5     | 19       | 56       | —            | 0                 | 2   | 5        | 3        | —  | 0                 | 0   | —        | —        |
| Florida              | 6            | 1                 | 9     | 71       | 57       | 2            | 2                 | 7   | 78       | 40       | 1  | 1                 | 4   | 43       | 46       |
| Georgia              | 1            | 0                 | 6     | 45       | 33       | 2            | 1                 | 5   | 59       | 49       | —  | 0                 | 2   | 23       | 16       |
| Maryland§            | 14           | 25                | 130   | 1,255    | 1,540    | 1            | 1                 | 8   | 55       | 56       | 1  | 0                 | 1   | 8        | 15       |
| North Carolina       | —            | 1                 | 14    | 56       | 23       | —            | 0                 | 5   | 21       | 23       | —  | 0                 | 5   | 18       | 12       |
| South Carolina§      | —            | 0                 | 3     | 23       | 21       | —            | 0                 | 1   | 2        | 8        | —  | 0                 | 1   | 10       | 20       |
| Virginia§            | 9            | 11                | 61    | 375      | 605      | 1            | 1                 | 4   | 38       | 38       | —  | 0                 | 2   | 9        | 18       |
| West Virginia        | —            | 0                 | 27    | 100      | 111      | —            | 0                 | 1   | 2        | 2        | —  | 0                 | 2   | 5        | 5        |
| <b>E.S. Central</b>  | —            | 0                 | 2     | 22       | 39       | —            | 1                 | 3   | 25       | 14       | 1  | 0                 | 3   | 23       | 40       |
| Alabama§             | —            | 0                 | 1     | 2        | 9        | —            | 0                 | 3   | 7        | 4        | —  | 0                 | 1   | 5        | 5        |
| Kentucky             | —            | 0                 | 1     | 1        | 4        | —            | 0                 | 2   | 8        | 4        | —  | 0                 | 1   | 4        | 7        |
| Mississippi          | —            | 0                 | 0     | —        | 1        | —            | 0                 | 1   | 1        | 1        | —  | 0                 | 1   | 2        | 9        |
| Tennessee§           | —            | 0                 | 2     | 19       | 25       | —            | 0                 | 3   | 9        | 5        | 1  | 0                 | 1   | 12       | 19       |
| <b>W.S. Central</b>  | 2            | 1                 | 21    | 40       | 82       | 1            | 1                 | 8   | 35       | 65       | 1  | 2                 | 12  | 64       | 95       |
| Arkansas§            | —            | 0                 | 0     | —        | —        | —            | 0                 | 1   | 3        | —        | —  | 0                 | 2   | 6        | 13       |
| Louisiana            | —            | 0                 | 0     | —        | 3        | —            | 0                 | 1   | 3        | 3        | —  | 0                 | 3   | 11       | 19       |
| Oklahoma             | —            | 0                 | 2     | —        | —        | —            | 0                 | 2   | 2        | 2        | —  | 0                 | 3   | 8        | 12       |
| Texas§               | 2            | 1                 | 21    | 40       | 79       | 1            | 0                 | 7   | 27       | 60       | 1  | 1                 | 9   | 39       | 51       |
| <b>Mountain</b>      | —            | 1                 | 13    | 41       | 46       | —            | 0                 | 5   | 25       | 27       | 1  | 1                 | 4   | 50       | 49       |
| Arizona              | —            | 0                 | 2     | 4        | 8        | —            | 0                 | 2   | 7        | 13       | —  | 0                 | 2   | 13       | 7        |
| Colorado             | —            | 0                 | 1     | 6        | 3        | —            | 0                 | 3   | 8        | 4        | 1  | 0                 | 2   | 16       | 10       |
| Idaho§               | —            | 0                 | 2     | 9        | 8        | —            | 0                 | 1   | 1        | 1        | —  | 0                 | 1   | 5        | 4        |
| Montana§             | —            | 0                 | 13    | 3        | 4        | —            | 0                 | 3   | 5        | —        | —  | 0                 | 2   | 4        | 4        |
| Nevada§              | —            | 0                 | 2     | 12       | 11       | —            | 0                 | 1   | —        | 4        | —  | 0                 | 2   | 4        | 7        |
| New Mexico§          | —            | 0                 | 1     | 1        | 8        | —            | 0                 | 1   | —        | 2        | —  | 0                 | 1   | 3        | 8        |
| Utah                 | —            | 0                 | 1     | 4        | 2        | —            | 0                 | 2   | 4        | 3        | —  | 0                 | 1   | 1        | 7        |
| Wyoming§             | —            | 0                 | 1     | 2        | 2        | —            | 0                 | 0   | —        | —        | —  | 0                 | 2   | 4        | 2        |
| <b>Pacific</b>       | 5            | 3                 | 13    | 154      | 94       | 4            | 3                 | 10  | 113      | 118      | 1  | 3                 | 14  | 145      | 236      |
| Alaska               | —            | 0                 | 1     | 2        | 6        | —            | 0                 | 1   | 2        | 4        | —  | 0                 | 2   | 5        | 6        |
| California           | 5            | 2                 | 10    | 128      | 51       | 4            | 2                 | 8   | 84       | 86       | 1  | 2                 | 8   | 97       | 173      |
| Hawaii               | N            | 0                 | 0     | N        | N        | —            | 0                 | 1   | 1        | 3        | —  | 0                 | 1   | 4        | 4        |
| Oregon§              | —            | 0                 | 3     | 13       | 28       | —            | 0                 | 2   | 10       | 4        | —  | 0                 | 6   | 26       | 29       |
| Washington           | —            | 0                 | 12    | 11       | 9        | —            | 0                 | 3   | 16       | 21       | —  | 0                 | 6   | 13       | 24       |
| American Samoa       | N            | 0                 | 0     | N        | N        | —            | 0                 | 0   | —        | —        | —  | 0                 | 0   | —        | —        |
| C.N.M.I.             | —            | —                 | —     | —        | —        | —            | —                 | —   | —        | —        | —  | —                 | —   | —        | —        |
| Guam                 | —            | 0                 | 0     | —        | —        | —            | 0                 | 2   | —        | 1        | —  | 0                 | 0   | —        | —        |
| Puerto Rico          | N            | 0                 | 0     | N        | N        | —            | 0                 | 1   | 2        | 2        | —  | 0                 | 0   | —        | 3        |
| U.S. Virgin Islands  | N            | 0                 | 0     | N        | N        | —            | 0                 | 0   | —        | —        | —  | 0                 | 0   | —        | —        |

C.N.M.I.: Commonwealth of Northern Mariana Islands.

U: Unavailable. —: No reported cases. N: Not reportable. Cum: Cumulative year-to-date counts. Med: Median. Max: Maximum.

\* Incidence data for reporting year 2009 is provisional.

† Data for meningococcal disease, invasive caused by serogroups A, C, Y, and W-135; serogroup B; other serogroup; and unknown serogroup are available in Table I.

§ Contains data reported through the National Electronic Disease Surveillance System (NEDSS).

TABLE II. (Continued) Provisional cases of selected notifiable diseases, United States, weeks ending October 3, 2009, and September 27, 2008 (39th)\*

| Reporting area       | Pertussis    |                   |       |          |          | Rabies, animal |                   |     |          |          | Rocky Mountain spotted fever |                   |     |          |          |
|----------------------|--------------|-------------------|-------|----------|----------|----------------|-------------------|-----|----------|----------|------------------------------|-------------------|-----|----------|----------|
|                      | Current week | Previous 52 weeks |       | Cum 2009 | Cum 2008 | Current week   | Previous 52 weeks |     | Cum 2009 | Cum 2008 | Current week                 | Previous 52 weeks |     | Cum 2009 | Cum 2008 |
|                      |              | Med               | Max   |          |          |                | Med               | Max |          |          |                              | Med               | Max |          |          |
| <b>United States</b> | 85           | 280               | 1,697 | 10,255   | 7,144    | 43             | 68                | 139 | 2,821    | 3,316    | 2                            | 29                | 179 | 1,142    | 1,849    |
| <b>New England</b>   | —            | 15                | 27    | 487      | 773      | —              | 7                 | 16  | 245      | 312      | —                            | 0                 | 2   | 9        | 4        |
| Connecticut          | —            | 0                 | 4     | 31       | 43       | —              | 2                 | 10  | 101      | 152      | —                            | 0                 | 0   | —        | —        |
| Maine†               | —            | 1                 | 10    | 69       | 27       | —              | 1                 | 4   | 40       | 43       | —                            | 0                 | 2   | 4        | 1        |
| Massachusetts        | —            | 8                 | 21    | 289      | 602      | —              | 0                 | 0   | —        | —        | —                            | 0                 | 1   | 4        | 1        |
| New Hampshire        | —            | 1                 | 7     | 64       | 23       | —              | 0                 | 7   | 24       | 31       | —                            | 0                 | 0   | —        | 1        |
| Rhode Island†        | —            | 0                 | 7     | 26       | 67       | —              | 1                 | 6   | 42       | 28       | —                            | 0                 | 2   | —        | 1        |
| Vermont†             | —            | 0                 | 1     | 8        | 11       | —              | 1                 | 4   | 38       | 58       | —                            | 0                 | 1   | 1        | —        |
| <b>Mid. Atlantic</b> | 17           | 24                | 64    | 845      | 830      | 9              | 14                | 23  | 478      | 729      | —                            | 1                 | 29  | 58       | 109      |
| New Jersey           | —            | 4                 | 12    | 138      | 169      | —              | 0                 | 0   | —        | —        | —                            | 0                 | 2   | —        | 75       |
| New York (Upstate)   | 13           | 5                 | 41    | 170      | 321      | 9              | 8                 | 22  | 359      | 393      | —                            | 0                 | 29  | 11       | 12       |
| New York City        | 3            | 0                 | 21    | 60       | 51       | —              | 0                 | 2   | 1        | 15       | —                            | 0                 | 4   | 25       | 11       |
| Pennsylvania         | 1            | 13                | 33    | 477      | 289      | —              | 4                 | 17  | 118      | 321      | —                            | 0                 | 2   | 22       | 11       |
| <b>E.N. Central</b>  | 25           | 57                | 238   | 2,252    | 1,165    | 4              | 3                 | 19  | 210      | 219      | —                            | 1                 | 6   | 69       | 135      |
| Illinois             | —            | 14                | 45    | 471      | 258      | 1              | 1                 | 9   | 83       | 88       | —                            | 1                 | 6   | 40       | 100      |
| Indiana              | —            | 5                 | 158   | 206      | 47       | —              | 0                 | 6   | 21       | 7        | —                            | 0                 | 3   | 10       | 6        |
| Michigan             | 9            | 11                | 32    | 580      | 196      | 1              | 1                 | 6   | 61       | 69       | —                            | 0                 | 2   | 5        | 3        |
| Ohio                 | 16           | 22                | 57    | 885      | 546      | 2              | 0                 | 5   | 45       | 55       | —                            | 0                 | 4   | 14       | 26       |
| Wisconsin            | —            | 3                 | 12    | 110      | 118      | N              | 0                 | 0   | N        | N        | —                            | 0                 | 0   | —        | —        |
| <b>W.N. Central</b>  | 9            | 36                | 872   | 1,365    | 584      | 8              | 5                 | 17  | 225      | 249      | —                            | 4                 | 26  | 277      | 397      |
| Iowa                 | —            | 6                 | 21    | 145      | 95       | —              | 0                 | 5   | 24       | 18       | —                            | 0                 | 2   | 5        | 8        |
| Kansas               | —            | 4                 | 12    | 142      | 44       | —              | 1                 | 6   | 60       | 55       | —                            | 0                 | 1   | 2        | —        |
| Minnesota            | —            | 0                 | 808   | 165      | 161      | 4              | 0                 | 11  | 50       | 44       | —                            | 0                 | 1   | 2        | —        |
| Missouri             | 6            | 20                | 51    | 752      | 189      | 4              | 1                 | 5   | 60       | 57       | —                            | 4                 | 25  | 257      | 368      |
| Nebraska†            | 3            | 3                 | 32    | 117      | 69       | —              | 0                 | 1   | —        | 32       | —                            | 0                 | 2   | 11       | 18       |
| North Dakota         | —            | 0                 | 24    | 17       | 1        | —              | 0                 | 9   | 4        | 24       | —                            | 0                 | 1   | —        | —        |
| South Dakota         | —            | 0                 | 10    | 27       | 25       | —              | 0                 | 4   | 27       | 19       | —                            | 0                 | 0   | —        | 3        |
| <b>S. Atlantic</b>   | 18           | 29                | 71    | 1,252    | 706      | 9              | 24                | 111 | 1,253    | 1,339    | 1                            | 12                | 40  | 394      | 656      |
| Delaware             | —            | 0                 | 2     | 10       | 13       | —              | 0                 | 0   | —        | —        | —                            | 0                 | 3   | 16       | 27       |
| District of Columbia | —            | 0                 | 2     | 2        | 4        | —              | 0                 | 0   | —        | —        | —                            | 0                 | 0   | —        | 6        |
| Florida              | 10           | 9                 | 32    | 442      | 214      | —              | 0                 | 95  | 133      | 138      | —                            | 0                 | 2   | 6        | 10       |
| Georgia              | —            | 3                 | 11    | 148      | 70       | —              | 0                 | 72  | 334      | 304      | —                            | 0                 | 7   | 40       | 73       |
| Maryland†            | 4            | 2                 | 8     | 86       | 109      | 8              | 7                 | 15  | 296      | 344      | —                            | 1                 | 3   | 27       | 72       |
| North Carolina       | —            | 0                 | 65    | 213      | 79       | N              | 2                 | 4   | N        | N        | 1                            | 6                 | 36  | 238      | 309      |
| South Carolina†      | 3            | 4                 | 17    | 185      | 93       | —              | 0                 | 0   | —        | —        | —                            | 0                 | 9   | 16       | 36       |
| Virginia†            | —            | 3                 | 24    | 141      | 116      | —              | 10                | 23  | 399      | 483      | —                            | 1                 | 9   | 47       | 115      |
| West Virginia        | 1            | 0                 | 5     | 25       | 8        | 1              | 2                 | 6   | 91       | 70       | —                            | 0                 | 1   | 4        | 8        |
| <b>E.S. Central</b>  | 1            | 15                | 33    | 596      | 244      | 2              | 1                 | 7   | 74       | 148      | 1                            | 4                 | 15  | 204      | 280      |
| Alabama†             | 1            | 4                 | 19    | 226      | 35       | —              | 0                 | 0   | —        | —        | —                            | 1                 | 6   | 50       | 72       |
| Kentucky             | —            | 6                 | 15    | 186      | 63       | 2              | 1                 | 4   | 40       | 35       | —                            | 0                 | 1   | 1        | 1        |
| Mississippi          | —            | 1                 | 4     | 42       | 80       | —              | 0                 | 1   | —        | 5        | —                            | 0                 | 1   | 7        | 10       |
| Tennessee†           | —            | 3                 | 14    | 142      | 66       | —              | 0                 | 4   | 34       | 108      | 1                            | 3                 | 14  | 146      | 197      |
| <b>W.S. Central</b>  | 6            | 57                | 389   | 2,131    | 1,161    | 9              | 0                 | 13  | 64       | 78       | —                            | 1                 | 161 | 110      | 228      |
| Arkansas†            | 1            | 4                 | 38    | 185      | 72       | —              | 0                 | 10  | 33       | 44       | —                            | 0                 | 61  | 47       | 44       |
| Louisiana            | —            | 2                 | 8     | 90       | 68       | —              | 0                 | 0   | —        | —        | —                            | 0                 | 1   | 2        | 5        |
| Oklahoma             | 2            | 0                 | 45    | 39       | 32       | 9              | 0                 | 13  | 30       | 32       | —                            | 0                 | 98  | 48       | 142      |
| Texas†               | 3            | 47                | 304   | 1,817    | 989      | —              | 0                 | 1   | 1        | 2        | —                            | 0                 | 6   | 13       | 37       |
| <b>Mountain</b>      | 1            | 18                | 31    | 697      | 651      | —              | 2                 | 9   | 75       | 79       | —                            | 0                 | 3   | 20       | 37       |
| Arizona              | —            | 3                 | 10    | 168      | 183      | N              | 0                 | 0   | N        | N        | —                            | 0                 | 2   | 4        | 10       |
| Colorado             | 1            | 4                 | 12    | 202      | 120      | —              | 0                 | 0   | —        | —        | —                            | 0                 | 1   | 1        | 1        |
| Idaho†               | —            | 1                 | 5     | 60       | 24       | —              | 0                 | 0   | —        | 11       | —                            | 0                 | 1   | 1        | 1        |
| Montana†             | —            | 0                 | 6     | 34       | 77       | —              | 0                 | 4   | 24       | 8        | —                            | 0                 | 2   | 8        | 3        |
| Nevada†              | —            | 0                 | 4     | 15       | 26       | —              | 0                 | 1   | 6        | 11       | —                            | 0                 | 1   | 1        | 3        |
| New Mexico†          | —            | 1                 | 10    | 44       | 39       | —              | 0                 | 2   | 19       | 24       | —                            | 0                 | 1   | 1        | 4        |
| Utah                 | —            | 4                 | 19    | 154      | 167      | —              | 0                 | 6   | 7        | 7        | —                            | 0                 | 1   | 1        | 5        |
| Wyoming†             | —            | 0                 | 5     | 20       | 15       | —              | 0                 | 4   | 19       | 18       | —                            | 0                 | 1   | 3        | 10       |
| <b>Pacific</b>       | 8            | 17                | 67    | 630      | 1,030    | 2              | 5                 | 12  | 197      | 163      | —                            | 0                 | 1   | 1        | 3        |
| Alaska               | —            | 1                 | 21    | 34       | 151      | —              | 0                 | 2   | 11       | 13       | N                            | 0                 | 0   | N        | N        |
| California           | —            | 3                 | 19    | 143      | 418      | 2              | 4                 | 12  | 171      | 141      | —                            | 0                 | 1   | 1        | —        |
| Hawaii               | —            | 0                 | 3     | 24       | 10       | —              | 0                 | 0   | —        | —        | N                            | 0                 | 0   | N        | N        |
| Oregon†              | 2            | 3                 | 17    | 205      | 145      | —              | 0                 | 3   | 15       | 9        | —                            | 0                 | 0   | —        | 3        |
| Washington           | 6            | 6                 | 58    | 224      | 306      | —              | 0                 | 0   | —        | —        | —                            | 0                 | 0   | —        | —        |
| American Samoa       | —            | 0                 | 0     | —        | —        | N              | 0                 | 0   | N        | N        | N                            | 0                 | 0   | N        | N        |
| C.N.M.I.             | —            | —                 | —     | —        | —        | —              | —                 | —   | —        | —        | —                            | —                 | —   | —        | —        |
| Guam                 | —            | 0                 | 0     | —        | —        | —              | 0                 | 0   | —        | —        | N                            | 0                 | 0   | N        | N        |
| Puerto Rico          | —            | 0                 | 1     | 1        | —        | 1              | 1                 | 3   | 31       | 49       | N                            | 0                 | 0   | N        | N        |
| U.S. Virgin Islands  | —            | 0                 | 0     | —        | —        | N              | 0                 | 0   | N        | N        | N                            | 0                 | 0   | N        | N        |

C.N.M.I.: Commonwealth of Northern Mariana Islands.

U: Unavailable. —: No reported cases. N: Not reportable. Cum: Cumulative year-to-date counts. Med: Median. Max: Maximum.

\* Incidence data for reporting year 2009 is provisional.

† Contains data reported through the National Electronic Disease Surveillance System (NEDSS).

TABLE II. (Continued) Provisional cases of selected notifiable diseases, United States, weeks ending October 3, 2009, and September 27, 2008 (39th)\*

| Reporting area       | Salmonellosis |                   |       |          |          | Shiga toxin-producing <i>E. coli</i> (STEC)† |                   |     |          |          | Shigellosis  |                   |       |          |          |
|----------------------|---------------|-------------------|-------|----------|----------|--|-------------------|-----|----------|----------|--------------|-------------------|-------|----------|----------|
|                      | Current week  | Previous 52 weeks |       | Cum 2009 | Cum 2008 | Current week                                 | Previous 52 weeks |     | Cum 2009 | Cum 2008 | Current week | Previous 52 weeks |       | Cum 2009 | Cum 2008 |
|                      |               | Med               | Max   |          |          |  | Med               | Max |          |          |              | Med               | Max   |          |          |
| <b>United States</b> | 789           | 910               | 2,323 | 32,519   | 35,554   | 75   | 89                | 255 | 3,155    | 3,795    | 184          | 313               | 1,268 | 11,279   | 14,793   |
| <b>New England</b>   | 2             | 32                | 353   | 1,680    | 1,830    | 3  | 3                 | 54  | 170      | 204      | 1            | 3                 | 38    | 274      | 192      |
| Connecticut          | —             | 0                 | 328   | 328      | 491      | —  | 0                 | 54  | 54       | 47       | —            | 0                 | 33    | 33       | 40       |
| Maine§               | —             | 2                 | 7     | 105      | 116      | —  | 0                 | 3   | 15       | 18       | —            | 0                 | 1     | 2        | 18       |
| Massachusetts        | —             | 22                | 49    | 880      | 951      | —  | 1                 | 6   | 60       | 95       | —            | 3                 | 26    | 198      | 117      |
| New Hampshire        | —             | 3                 | 42    | 214      | 118      | 1  | 1                 | 3   | 25       | 19       | —            | 0                 | 4     | 15       | 4        |
| Rhode Island§        | 2             | 2                 | 11    | 108      | 80       | —  | 0                 | 1   | 1        | 8        | 1            | 0                 | 7     | 21       | 10       |
| Vermont§             | —             | 1                 | 5     | 45       | 74       | 2  | 0                 | 6   | 15       | 17       | —            | 0                 | 2     | 5        | 3        |
| <b>Mid. Atlantic</b> | 56            | 91                | 151   | 3,517    | 4,480    | 8  | 6                 | 19  | 270      | 375      | 7            | 56                | 82    | 2,165    | 1,884    |
| New Jersey           | —             | 12                | 30    | 307      | 1,041    | —  | 1                 | 4   | 31       | 110      | 1            | 13                | 27    | 443      | 665      |
| New York (Upstate)   | 43            | 24                | 66    | 1,023    | 1,031    | 8  | 3                 | 9   | 111      | 130      | 3            | 5                 | 23    | 175      | 479      |
| New York City        | 2             | 19                | 42    | 883      | 1,023    | —  | 1                 | 5   | 46       | 44       | —            | 9                 | 17    | 335      | 596      |
| Pennsylvania         | 11            | 29                | 61    | 1,304    | 1,385    | —  | 1                 | 6   | 82       | 91       | 3            | 24                | 63    | 1,212    | 144      |
| <b>E.N. Central</b>  | 49            | 90                | 144   | 3,547    | 3,941    | 4  | 13                | 33  | 509      | 683      | 12           | 57                | 132   | 1,945    | 2,923    |
| Illinois             | —             | 25                | 50    | 950      | 1,145    | —  | 2                 | 10  | 110      | 109      | —            | 12                | 25    | 402      | 780      |
| Indiana              | —             | 6                 | 50    | 246      | 470      | —  | 1                 | 6   | 39       | 73       | —            | 1                 | 21    | 38       | 525      |
| Michigan             | 5             | 18                | 33    | 733      | 736      | —  | 3                 | 14  | 119      | 169      | —            | 5                 | 24    | 175      | 101      |
| Ohio                 | 40            | 28                | 52    | 1,156    | 987      | 4  | 3                 | 11  | 111      | 152      | 8            | 31                | 80    | 957      | 1,158    |
| Wisconsin            | 4             | 11                | 29    | 462      | 603      | —  | 3                 | 10  | 130      | 180      | 4            | 10                | 38    | 373      | 359      |
| <b>W.N. Central</b>  | 15            | 50                | 109   | 2,065    | 2,222    | 8  | 12                | 38  | 570      | 637      | 18           | 17                | 48    | 711      | 691      |
| Iowa                 | 2             | 7                 | 15    | 323      | 335      | 1  | 2                 | 14  | 136      | 172      | —            | 1                 | 12    | 47       | 121      |
| Kansas               | —             | 6                 | 18    | 269      | 378      | —  | 1                 | 7   | 33       | 37       | —            | 3                 | 11    | 159      | 39       |
| Minnesota            | 3             | 13                | 51    | 477      | 551      | 1  | 2                 | 19  | 164      | 134      | —            | 2                 | 14    | 68       | 238      |
| Missouri             | 10            | 12                | 33    | 517      | 605      | 4  | 2                 | 10  | 103      | 127      | 18           | 5                 | 40    | 408      | 178      |
| Nebraska§            | —             | 5                 | 41    | 283      | 193      | 2  | 2                 | 6   | 72       | 128      | —            | 0                 | 3     | 22       | 6        |
| North Dakota         | —             | 0                 | 30    | 40       | 38       | —  | 0                 | 28  | 3        | 1        | —            | 0                 | 9     | 3        | 33       |
| South Dakota         | —             | 3                 | 22    | 156      | 122      | —  | 0                 | 12  | 59       | 38       | —            | 0                 | 1     | 4        | 76       |
| <b>S. Atlantic</b>   | 383           | 262               | 440   | 9,089    | 8,788    | 11   | 13                | 30  | 489      | 639      | 29           | 45                | 85    | 1,724    | 2,397    |
| Delaware             | —             | 2                 | 7     | 87       | 128      | —  | 0                 | 2   | 11       | 11       | 1            | 1                 | 8     | 91       | 7        |
| District of Columbia | —             | 0                 | 5     | 21       | 49       | —  | 0                 | 1   | 1        | 6        | —            | 0                 | 2     | 6        | 16       |
| Florida              | 218           | 115               | 280   | 4,407    | 3,556    | 5  | 3                 | 7   | 130      | 109      | 13           | 9                 | 24    | 357      | 650      |
| Georgia              | 61            | 39                | 96    | 1,723    | 1,734    | —  | 1                 | 4   | 54       | 71       | 4            | 13                | 30    | 488      | 872      |
| Maryland§            | 26            | 15                | 26    | 562      | 652      | 1  | 2                 | 6   | 72       | 109      | 3            | 6                 | 14    | 270      | 78       |
| North Carolina       | 42            | 20                | 104   | 842      | 908      | 1  | 2                 | 21  | 78       | 71       | 7            | 6                 | 27    | 266      | 147      |
| South Carolina§      | 19            | 15                | 54    | 585      | 829      | —  | 0                 | 3   | 22       | 36       | —            | 3                 | 12    | 91       | 456      |
| Virginia§            | 16            | 19                | 88    | 702      | 774      | 2  | 3                 | 16  | 100      | 194      | 1            | 5                 | 59    | 149      | 143      |
| West Virginia        | 1             | 4                 | 23    | 160      | 158      | 2  | 0                 | 3   | 21       | 32       | —            | 0                 | 3     | 6        | 28       |
| <b>E.S. Central</b>  | 15            | 56                | 124   | 2,089    | 2,605    | 1  | 4                 | 12  | 163      | 214      | 4            | 17                | 58    | 616      | 1,455    |
| Alabama§             | 4             | 15                | 38    | 507      | 727      | —  | 1                 | 4   | 36       | 53       | 1            | 3                 | 11    | 102      | 338      |
| Kentucky             | 4             | 10                | 18    | 364      | 349      | —  | 1                 | 7   | 55       | 70       | —            | 2                 | 25    | 154      | 225      |
| Mississippi          | 1             | 14                | 45    | 641      | 896      | —  | 0                 | 1   | 6        | 4        | —            | 1                 | 4     | 37       | 284      |
| Tennessee§           | 6             | 14                | 62    | 577      | 633      | 1  | 2                 | 8   | 66       | 87       | 3            | 11                | 48    | 323      | 608      |
| <b>W.S. Central</b>  | 97            | 111               | 1,333 | 3,511    | 5,088    | 4  | 5                 | 139 | 175      | 271      | 48           | 54                | 967   | 2,011    | 3,224    |
| Arkansas§            | 25            | 12                | 29    | 481      | 592      | 2  | 0                 | 4   | 31       | 46       | 3            | 7                 | 20    | 248      | 429      |
| Louisiana            | —             | 12                | 43    | 599      | 872      | —  | 0                 | 1   | —        | 7        | —            | 4                 | 13    | 108      | 532      |
| Oklahoma             | 15            | 14                | 102   | 491      | 602      | —  | 1                 | 82  | 21       | 23       | 8            | 5                 | 61    | 227      | 116      |
| Texas§               | 57            | 56                | 1,204 | 1,940    | 3,022    | 2  | 3                 | 55  | 123      | 195      | 37           | 40                | 889   | 1,428    | 2,147    |
| <b>Mountain</b>      | 23            | 57                | 128   | 2,250    | 2,579    | 8  | 10                | 40  | 427      | 445      | 21           | 24                | 54    | 908      | 777      |
| Arizona              | 9             | 20                | 48    | 781      | 839      | 1  | 1                 | 4   | 57       | 54       | 11           | 17                | 42    | 662      | 370      |
| Colorado             | 9             | 13                | 33    | 490      | 554      | 4  | 3                 | 18  | 135      | 133      | 6            | 2                 | 11    | 78       | 89       |
| Idaho§               | 2             | 3                 | 10    | 141      | 135      | 2  | 2                 | 15  | 73       | 91       | —            | 0                 | 2     | 8        | 11       |
| Montana§             | —             | 2                 | 7     | 87       | 92       | 1  | 0                 | 7   | 28       | 31       | —            | 0                 | 5     | 13       | 6        |
| Nevada§              | 2             | 4                 | 13    | 194      | 177      | —  | 0                 | 3   | 23       | 15       | 3            | 1                 | 11    | 57       | 181      |
| New Mexico§          | —             | 5                 | 28    | 260      | 451      | —  | 1                 | 2   | 28       | 43       | 1            | 2                 | 12    | 73       | 90       |
| Utah                 | —             | 6                 | 15    | 233      | 270      | —  | 2                 | 8   | 72       | 68       | —            | 0                 | 3     | 15       | 27       |
| Wyoming§             | 1             | 1                 | 8     | 64       | 61       | —  | 0                 | 2   | 11       | 10       | —            | 0                 | 1     | 2        | 3        |
| <b>Pacific</b>       | 149           | 129               | 537   | 4,771    | 4,021    | 28   | 10                | 31  | 382      | 327      | 44           | 26                | 70    | 925      | 1,250    |
| Alaska               | —             | 1                 | 6     | 59       | 43       | —  | 0                 | 1   | —        | 5        | —            | 0                 | 1     | 2        | 1        |
| California           | 125           | 97                | 516   | 3,625    | 2,923    | 9  | 5                 | 15  | 187      | 153      | 33           | 20                | 65    | 749      | 1,073    |
| Hawaii               | 3             | 5                 | 13    | 191      | 207      | —  | 0                 | 1   | 3        | 11       | 1            | 0                 | 4     | 29       | 36       |
| Oregon§              | 1             | 8                 | 16    | 312      | 343      | 1  | 1                 | 6   | 55       | 55       | —            | 1                 | 7     | 29       | 69       |
| Washington           | 20            | 12                | 85    | 584      | 505      | 18   | 3                 | 17  | 137      | 103      | 10           | 2                 | 11    | 116      | 71       |
| American Samoa       | —             | 0                 | 1     | —        | 2        | —  | 0                 | 0   | —        | —        | —            | 1                 | 2     | 3        | 1        |
| C.N.M.I.             | —             | —                 | —     | —        | —        | —  | —                 | —   | —        | —        | —            | —                 | —     | —        | —        |
| Guam                 | —             | 0                 | 2     | —        | 11       | —  | 0                 | 0   | —        | —        | —            | 0                 | 1     | —        | 14       |
| Puerto Rico          | 6             | 8                 | 40    | 277      | 552      | —  | 0                 | 1   | 1        | —        | —            | 0                 | 2     | 7        | 25       |
| U.S. Virgin Islands  | —             | 0                 | 0     | —        | —        | —  | 0                 | 0   | —        | —        | —            | 0                 | 0     | —        | —        |

C.N.M.I.: Commonwealth of Northern Mariana Islands.

U: Unavailable. —: No reported cases. N: Not reportable. Cum: Cumulative year-to-date counts. Med: Median. Max: Maximum.

\* Incidence data for reporting year 2009 is provisional.

† Includes *E. coli* O157:H7; Shiga toxin-positive, serogroup non-O157; and Shiga toxin-positive, not serogrouped.

§ Contains data reported through the National Electronic Disease Surveillance System (NEDSS).



TABLE II. (Continued) Provisional cases of selected notifiable diseases, United States, weeks ending October 3, 2009, and September 27, 2008 (39th)\*

| Reporting area       | Streptococcal diseases, invasive, group A |                   |     |          |          | <i>Streptococcus pneumoniae</i> , invasive disease, nondrug resistant†<br>Age <5 years |                   |     |          |          |
|----------------------|---|-------------------|-----|----------|----------|--|-------------------|-----|----------|----------|
|                      | Current week                              | Previous 52 weeks |     | Cum 2009 | Cum 2008 | Current week   | Previous 52 weeks |     | Cum 2009 | Cum 2008 |
|                      |   | Med               | Max |          |          |  | Med               | Max |          |          |
| <b>United States</b> | 31  | 101               | 239 | 4,061    | 4,340    | 21   | 36                | 122 | 1,265    | 1,333    |
| <b>New England</b>   | —   | 5                 | 28  | 238      | 306      | 1  | 1                 | 12  | 46       | 63       |
| Connecticut          | —   | 0                 | 21  | 63       | 86       | —  | 0                 | 11  | —        | —        |
| Maine§               | —   | 0                 | 2   | 14       | 22       | 1  | 0                 | 1   | 4        | 1        |
| Massachusetts        | —   | 3                 | 10  | 103      | 142      | —  | 1                 | 4   | 30       | 46       |
| New Hampshire        | —   | 1                 | 4   | 34       | 20       | —  | 0                 | 2   | 8        | 8        |
| Rhode Island§        | —   | 0                 | 2   | 11       | 23       | —  | 0                 | 2   | 1        | 8        |
| Vermont§             | —   | 0                 | 3   | 13       | 13       | —  | 0                 | 1   | 3        | —        |
| <b>Mid. Atlantic</b> | 11  | 19                | 43  | 829      | 879      | 2  | 5                 | 33  | 190      | 163      |
| New Jersey           | —   | 3                 | 7   | 115      | 157      | —  | 1                 | 4   | 36       | 48       |
| New York (Upstate)   | 7   | 7                 | 25  | 272      | 275      | 2  | 2                 | 17  | 88       | 73       |
| New York City        | —   | 4                 | 12  | 159      | 163      | —  | 0                 | 31  | 66       | 42       |
| Pennsylvania         | 4   | 6                 | 18  | 283      | 284      | N  | 0                 | 2   | N        | N        |
| <b>E.N. Central</b>  | 2   | 17                | 42  | 758      | 817      | 3  | 6                 | 18  | 197      | 246      |
| Illinois             | —   | 5                 | 12  | 211      | 216      | —  | 1                 | 5   | 23       | 70       |
| Indiana              | —   | 2                 | 23  | 121      | 110      | —  | 0                 | 13  | 29       | 26       |
| Michigan             | —   | 3                 | 11  | 121      | 145      | —  | 1                 | 5   | 49       | 60       |
| Ohio                 | 2   | 4                 | 13  | 189      | 224      | 3  | 1                 | 6   | 59       | 47       |
| Wisconsin            | —   | 2                 | 11  | 116      | 122      | —  | 1                 | 3   | 37       | 43       |
| <b>W.N. Central</b>  | —   | 6                 | 37  | 325      | 319      | 5  | 2                 | 11  | 114      | 72       |
| Iowa                 | —   | 0                 | 0   | —        | —        | —  | 0                 | 0   | —        | —        |
| Kansas               | —   | 0                 | 5   | 37       | 35       | N  | 0                 | 1   | N        | N        |
| Minnesota            | —   | 0                 | 34  | 146      | 150      | 5  | 0                 | 10  | 66       | 20       |
| Missouri             | —   | 2                 | 8   | 73       | 75       | —  | 0                 | 4   | 30       | 32       |
| Nebraska§            | —   | 1                 | 3   | 37       | 31       | —  | 0                 | 1   | 8        | 7        |
| North Dakota         | —   | 0                 | 4   | 11       | 8        | —  | 0                 | 3   | 4        | 6        |
| South Dakota         | —   | 0                 | 3   | 21       | 20       | —  | 0                 | 2   | 6        | 7        |
| <b>S. Atlantic</b>   | 5   | 22                | 49  | 925      | 896      | 5  | 6                 | 16  | 234      | 264      |
| Delaware             | —   | 0                 | 1   | 10       | 6        | —  | 0                 | 0   | —        | —        |
| District of Columbia | —   | 0                 | 3   | 11       | 12       | N  | 0                 | 0   | N        | N        |
| Florida              | 4   | 6                 | 12  | 230      | 201      | —  | 1                 | 6   | 54       | 49       |
| Georgia              | —   | 5                 | 13  | 220      | 203      | 2  | 2                 | 6   | 60       | 72       |
| Maryland§            | 1   | 3                 | 12  | 147      | 151      | 3  | 1                 | 4   | 56       | 47       |
| North Carolina       | —   | 2                 | 12  | 84       | 117      | N  | 0                 | 0   | N        | N        |
| South Carolina§      | —   | 1                 | 5   | 57       | 58       | —  | 1                 | 6   | 34       | 50       |
| Virginia§            | —   | 3                 | 9   | 132      | 114      | —  | 0                 | 4   | 18       | 38       |
| West Virginia        | —   | 1                 | 4   | 34       | 34       | —  | 0                 | 3   | 12       | 8        |
| <b>E.S. Central</b>  | 2   | 3                 | 10  | 154      | 157      | 1  | 2                 | 7   | 70       | 67       |
| Alabama§             | N   | 0                 | 0   | N        | N        | N  | 0                 | 0   | N        | N        |
| Kentucky             | —   | 1                 | 5   | 30       | 33       | N  | 0                 | 0   | N        | N        |
| Mississippi          | N   | 0                 | 0   | N        | N        | —  | 0                 | 2   | 14       | 8        |
| Tennessee§           | 2   | 3                 | 9   | 124      | 124      | 1  | 1                 | 6   | 56       | 59       |
| <b>W.S. Central</b>  | 8   | 9                 | 79  | 356      | 388      | 3  | 5                 | 46  | 215      | 211      |
| Arkansas§            | —   | 0                 | 2   | 14       | 9        | —  | 0                 | 4   | 22       | 11       |
| Louisiana            | —   | 0                 | 3   | 11       | 15       | —  | 0                 | 3   | 13       | 11       |
| Oklahoma             | 5   | 3                 | 20  | 116      | 89       | 2  | 1                 | 7   | 48       | 53       |
| Texas§               | 3   | 5                 | 59  | 215      | 275      | 1  | 3                 | 34  | 132      | 136      |
| <b>Mountain</b>      | 2   | 9                 | 22  | 349      | 456      | 1  | 4                 | 16  | 173      | 208      |
| Arizona              | 2   | 3                 | 7   | 120      | 161      | —  | 2                 | 10  | 93       | 93       |
| Colorado             | —   | 3                 | 7   | 108      | 114      | 1  | 0                 | 4   | 31       | 49       |
| Idaho§               | —   | 0                 | 2   | 8        | 13       | —  | 0                 | 2   | 7        | 3        |
| Montana§             | N   | 0                 | 0   | N        | N        | N  | 0                 | 0   | N        | N        |
| Nevada§              | —   | 0                 | 1   | 5        | 9        | —  | 0                 | 1   | —        | 3        |
| New Mexico§          | —   | 2                 | 7   | 63       | 108      | —  | 0                 | 4   | 15       | 29       |
| Utah                 | —   | 1                 | 6   | 44       | 45       | —  | 0                 | 5   | 27       | 29       |
| Wyoming§             | —   | 0                 | 1   | 1        | 6        | —  | 0                 | 0   | —        | 2        |
| <b>Pacific</b>       | 1   | 3                 | 9   | 127      | 122      | —  | 0                 | 4   | 26       | 39       |
| Alaska               | —   | 1                 | 4   | 27       | 30       | —  | 0                 | 3   | 20       | 24       |
| California           | N   | 0                 | 0   | N        | N        | N  | 0                 | 0   | N        | N        |
| Hawaii               | 1   | 2                 | 8   | 100      | 92       | —  | 0                 | 2   | 6        | 15       |
| Oregon§              | N   | 0                 | 0   | N        | N        | N  | 0                 | 0   | N        | N        |
| Washington           | N   | 0                 | 0   | N        | N        | N  | 0                 | 0   | N        | N        |
| American Samoa       | —   | 0                 | 0   | —        | 30       | N  | 0                 | 0   | N        | N        |
| C.N.M.I.             | —   | —                 | —   | —        | —        | —  | —                 | —   | —        | —        |
| Guam                 | —   | 0                 | 0   | —        | —        | —  | 0                 | 0   | —        | —        |
| Puerto Rico          | N   | 0                 | 0   | N        | N        | N  | 0                 | 0   | N        | N        |
| U.S. Virgin Islands  | —   | 0                 | 0   | —        | —        | N  | 0                 | 0   | N        | N        |

C.N.M.I.: Commonwealth of Northern Mariana Islands.

U: Unavailable. —: No reported cases. N: Not reportable. Cum: Cumulative year-to-date counts. Med: Median. Max: Maximum.

\* Incidence data for reporting year 2009 is provisional.

† Includes cases of invasive pneumococcal disease, in children aged <5 years, caused by *S. pneumoniae*, which is susceptible or for which susceptibility testing is not available (NNDS event code 11717).

§ Contains data reported through the National Electronic Disease Surveillance System (NEDSS).

TABLE II. (Continued) Provisional cases of selected notifiable diseases, United States, weeks ending October 3, 2009, and September 27, 2008 (39th)\*

| Reporting area       | <i>Streptococcus pneumoniae</i> , invasive disease, drug resistant† |                   |     |          |               |              |                   |    |          |          | Syphilis, primary and secondary |                   |     |          |          |
|----------------------|---|-------------------|-----|----------|---------------|--------------|-------------------|----|----------|----------|---------------------------------|-------------------|-----|----------|----------|
|                      | All ages  |                   |     |          | Aged <5 years |              |                   |    |          |          |                                 |                   |     |          |          |
|                      | Current week  | Previous 52 weeks |     | Cum 2009 | Cum 2008      | Current week | Previous 52 weeks |    | Cum 2009 | Cum 2008 | Current week                    | Previous 52 weeks |     | Cum 2009 | Cum 2008 |
|                      | Med   | Max               |     |          |               | Med          | Max               |    |          |          | Med                             | Max               |     |          |          |
| <b>United States</b> | 30  | 60                | 276 | 2,109    | 2,328         | 6            | 9                 | 21 | 324      | 364      | 103                             | 266               | 452 | 9,797    | 9,581    |
| <b>New England</b>   | 1   | 1                 | 48  | 43       | 54            | —            | 0                 | 5  | 3        | 8        | 5                               | 5                 | 15  | 242      | 232      |
| Connecticut          | —   | 0                 | 48  | —        | 7             | —            | 0                 | 5  | —        | —        | —                               | 1                 | 5   | 43       | 23       |
| Maine§               | 1   | 0                 | 2   | 11       | 15            | —            | 0                 | 1  | 1        | 1        | —                               | 0                 | 1   | 2        | 10       |
| Massachusetts        | —   | 0                 | 1   | 3        | —             | —            | 0                 | 1  | 2        | —        | 5                               | 4                 | 11  | 172      | 162      |
| New Hampshire        | —   | 0                 | 3   | 5        | —             | —            | 0                 | 0  | —        | —        | —                               | 0                 | 2   | 13       | 15       |
| Rhode Island§        | —   | 0                 | 6   | 13       | 19            | —            | 0                 | 1  | —        | 5        | —                               | 0                 | 5   | 12       | 14       |
| Vermont§             | —   | 0                 | 2   | 11       | 13            | —            | 0                 | 0  | —        | 2        | —                               | 0                 | 2   | —        | 8        |
| <b>Mid. Atlantic</b> | 5   | 3                 | 14  | 133      | 239           | —            | 0                 | 3  | 20       | 21       | 26                              | 35                | 51  | 1,386    | 1,258    |
| New Jersey           | —   | 0                 | 0   | —        | —             | —            | 0                 | 0  | —        | —        | 1                               | 3                 | 13  | 166      | 169      |
| New York (Upstate)   | 2   | 1                 | 10  | 59       | 51            | —            | 0                 | 2  | 10       | 6        | 2                               | 2                 | 8   | 92       | 101      |
| New York City        | —   | 0                 | 4   | 3        | 97            | —            | 0                 | 2  | —        | 1        | 18                              | 22                | 40  | 864      | 792      |
| Pennsylvania         | 3   | 1                 | 8   | 71       | 91            | —            | 0                 | 2  | 10       | 14       | 5                               | 7                 | 12  | 264      | 196      |
| <b>E.N. Central</b>  | 6   | 11                | 41  | 476      | 485           | 1            | 1                 | 7  | 67       | 66       | 5                               | 23                | 43  | 794      | 911      |
| Illinois             | N   | 0                 | 0   | N        | N             | N            | 0                 | 0  | N        | N        | 2                               | 8                 | 19  | 235      | 369      |
| Indiana              | —   | 3                 | 32  | 171      | 166           | —            | 0                 | 6  | 24       | 21       | 1                               | 2                 | 10  | 124      | 105      |
| Michigan             | —   | 0                 | 2   | 19       | 17            | —            | 0                 | 1  | 2        | 2        | 1                               | 4                 | 18  | 181      | 145      |
| Ohio                 | 6   | 7                 | 18  | 286      | 302           | 1            | 1                 | 4  | 41       | 43       | 1                               | 6                 | 18  | 223      | 249      |
| Wisconsin            | —   | 0                 | 0   | —        | —             | —            | 0                 | 0  | —        | —        | —                               | 1                 | 4   | 31       | 43       |
| <b>W.N. Central</b>  | 1   | 2                 | 161 | 97       | 165           | —            | 0                 | 3  | 20       | 33       | 1                               | 6                 | 11  | 231      | 316      |
| Iowa                 | —   | 0                 | 0   | —        | —             | —            | 0                 | 0  | —        | —        | —                               | 0                 | 2   | 17       | 15       |
| Kansas               | —   | 1                 | 5   | 38       | 61            | —            | 0                 | 2  | 13       | 4        | —                               | 0                 | 3   | 26       | 24       |
| Minnesota            | —   | 0                 | 156 | —        | 24            | —            | 0                 | 3  | —        | 24       | —                               | 1                 | 6   | 40       | 80       |
| Missouri             | —   | 1                 | 5   | 45       | 72            | —            | 0                 | 1  | 5        | 2        | 1                               | 3                 | 7   | 128      | 185      |
| Nebraska§            | 1   | 0                 | 1   | 2        | —             | —            | 0                 | 0  | —        | —        | —                               | 0                 | 3   | 16       | 12       |
| North Dakota         | —   | 0                 | 3   | 10       | 2             | —            | 0                 | 0  | —        | —        | —                               | 0                 | 1   | 3        | —        |
| South Dakota         | —   | 0                 | 2   | 2        | 6             | —            | 0                 | 2  | 2        | 3        | —                               | 0                 | 1   | 1        | —        |
| <b>S. Atlantic</b>   | 16  | 26                | 53  | 995      | 958           | 5            | 4                 | 14 | 151      | 163      | 16                              | 64                | 262 | 2,420    | 2,094    |
| Delaware             | —   | 0                 | 2   | 15       | 3             | —            | 0                 | 0  | —        | —        | —                               | 0                 | 3   | 24       | 10       |
| District of Columbia | N   | 0                 | 0   | N        | N             | N            | 0                 | 0  | N        | N        | —                               | 3                 | 9   | 126      | 99       |
| Florida              | 13  | 15                | 36  | 586      | 542           | 3            | 2                 | 13 | 93       | 103      | 3                               | 19                | 32  | 738      | 784      |
| Georgia              | 3   | 8                 | 25  | 302      | 326           | 2            | 1                 | 5  | 51       | 52       | 4                               | 14                | 227 | 578      | 485      |
| Maryland§            | —   | 0                 | 1   | 4        | 4             | —            | 0                 | 0  | —        | 1        | —                               | 6                 | 16  | 226      | 254      |
| North Carolina       | N   | 0                 | 0   | N        | N             | N            | 0                 | 0  | N        | N        | 7                               | 9                 | 21  | 406      | 200      |
| South Carolina§      | —   | 0                 | 0   | —        | —             | —            | 0                 | 0  | —        | —        | 1                               | 2                 | 6   | 89       | 66       |
| Virginia§            | N   | 0                 | 0   | N        | N             | N            | 0                 | 0  | N        | N        | 1                               | 7                 | 15  | 229      | 187      |
| West Virginia        | —   | 2                 | 13  | 88       | 83            | —            | 0                 | 3  | 7        | 7        | —                               | 0                 | 2   | 4        | 9        |
| <b>E.S. Central</b>  | 1   | 5                 | 25  | 201      | 251           | —            | 1                 | 3  | 29       | 47       | 10                              | 22                | 36  | 858      | 831      |
| Alabama§             | N   | 0                 | 0   | N        | N             | N            | 0                 | 0  | N        | N        | —                               | 8                 | 17  | 325      | 338      |
| Kentucky             | —   | 1                 | 5   | 56       | 62            | —            | 0                 | 2  | 7        | 10       | —                               | 1                 | 10  | 49       | 64       |
| Mississippi          | —   | 0                 | 3   | 3        | 31            | —            | 0                 | 1  | 2        | 9        | —                               | 4                 | 18  | 163      | 118      |
| Tennessee§           | 1   | 3                 | 23  | 142      | 158           | —            | 0                 | 3  | 20       | 28       | 10                              | 8                 | 15  | 321      | 311      |
| <b>W.S. Central</b>  | —   | 2                 | 6   | 75       | 76            | —            | 0                 | 3  | 15       | 12       | 32                              | 48                | 80  | 1,840    | 1,636    |
| Arkansas§            | —   | 1                 | 5   | 43       | 13            | —            | 0                 | 3  | 10       | 3        | 10                              | 4                 | 35  | 186      | 116      |
| Louisiana            | —   | 1                 | 5   | 32       | 63            | —            | 0                 | 1  | 5        | 9        | —                               | 10                | 40  | 303      | 468      |
| Oklahoma             | N   | 0                 | 0   | N        | N             | N            | 0                 | 0  | N        | N        | —                               | 1                 | 7   | 49       | 57       |
| Texas§               | —   | 0                 | 0   | —        | —             | —            | 0                 | 0  | —        | —        | 22                              | 33                | 50  | 1,302    | 995      |
| <b>Mountain</b>      | —   | 2                 | 7   | 86       | 98            | —            | 0                 | 3  | 17       | 12       | 4                               | 9                 | 18  | 332      | 476      |
| Arizona              | —   | 0                 | 0   | —        | —             | —            | 0                 | 0  | —        | —        | 1                               | 4                 | 9   | 144      | 246      |
| Colorado             | —   | 0                 | 0   | —        | —             | —            | 0                 | 0  | —        | —        | —                               | 1                 | 4   | 64       | 112      |
| Idaho§               | N   | 0                 | 1   | N        | N             | N            | 0                 | 1  | N        | N        | —                               | 0                 | 2   | 3        | 4        |
| Montana§             | —   | 0                 | 1   | —        | —             | —            | 0                 | 0  | —        | —        | —                               | 0                 | 7   | —        | —        |
| Nevada§              | —   | 1                 | 4   | 34       | 47            | —            | 0                 | 2  | 7        | 5        | 3                               | 1                 | 10  | 82       | 63       |
| New Mexico§          | —   | 0                 | 0   | —        | —             | —            | 0                 | 0  | —        | —        | —                               | 1                 | 5   | 37       | 32       |
| Utah                 | —   | 1                 | 6   | 43       | 50            | —            | 0                 | 3  | 9        | 7        | —                               | 0                 | 2   | —        | 16       |
| Wyoming§             | —   | 0                 | 2   | 9        | 1             | —            | 0                 | 1  | 1        | —        | —                               | 0                 | 1   | 2        | 3        |
| <b>Pacific</b>       | —   | 0                 | 1   | 3        | 2             | —            | 0                 | 1  | 2        | 2        | 4                               | 44                | 67  | 1,694    | 1,827    |
| Alaska               | —   | 0                 | 0   | —        | —             | —            | 0                 | 0  | —        | —        | —                               | 0                 | 0   | —        | 1        |
| California           | N   | 0                 | 0   | N        | N             | N            | 0                 | 0  | N        | N        | 3                               | 40                | 60  | 1,532    | 1,653    |
| Hawaii               | —   | 0                 | 1   | 3        | 2             | —            | 0                 | 1  | 2        | 2        | —                               | 0                 | 3   | 21       | 16       |
| Oregon§              | N   | 0                 | 0   | N        | N             | N            | 0                 | 0  | N        | N        | —                               | 0                 | 4   | 32       | 16       |
| Washington           | N   | 0                 | 0   | N        | N             | N            | 0                 | 0  | N        | N        | 1                               | 3                 | 7   | 109      | 141      |
| American Samoa       | N   | 0                 | 0   | N        | N             | N            | 0                 | 0  | N        | N        | —                               | 0                 | 0   | —        | —        |
| C.N.M.I.             | —   | —                 | —   | —        | —             | —            | —                 | —  | —        | —        | —                               | —                 | —   | —        | —        |
| Guam                 | —   | 0                 | 0   | —        | —             | —            | 0                 | 0  | —        | —        | —                               | 0                 | 0   | —        | —        |
| Puerto Rico          | —   | 0                 | 0   | —        | —             | —            | 0                 | 0  | —        | —        | —                               | 3                 | 17  | 168      | 117      |
| U.S. Virgin Islands  | —   | 0                 | 0   | —        | —             | —            | 0                 | 0  | —        | —        | —                               | 0                 | 0   | —        | —        |

C.N.M.I.: Commonwealth of Northern Mariana Islands.

U: Unavailable. —: No reported cases. N: Not reportable. Cum: Cumulative year-to-date counts. Med: Median. Max: Maximum.

\* Incidence data for reporting year 2009 is provisional.

† Includes cases of invasive pneumococcal disease caused by drug-resistant *S. pneumoniae* (DRSP) (NNDSS event code 11720).

§ Contains data reported through the National Electronic Disease Surveillance System (NEDSS).

**TABLE II. (Continued) Provisional cases of selected notifiable diseases, United States, weeks ending October 3, 2009, and September 27, 2008 (39th)\***

| Reporting area       | West Nile virus disease† |                   |       |          |               |              |                   |    |                   |          |              |                   |    |          |          |
|----------------------|--------------------------|-------------------|-------|----------|---------------|--------------|-------------------|----|-------------------|----------|--------------|-------------------|----|----------|----------|
|                      | Varicella (chickenpox)   |                   |       |          | Neuroinvasive |              |                   |    | Nonneuroinvasive§ |          |              |                   |    |          |          |
|                      | Current week             | Previous 52 weeks |       | Cum 2009 | Cum 2008      | Current week | Previous 52 weeks |    | Cum 2009          | Cum 2008 | Current week | Previous 52 weeks |    | Cum 2009 | Cum 2008 |
|                      | Med                      | Max               |       |          |               | Med          | Max               |    |                   |          | Med          | Max               |    |          |          |
| <b>United States</b> | 188                      | 448               | 1,035 | 13,597   | 22,299        | —            | 1                 | 35 | 236               | 615      | —            | 1                 | 34 | 199      | 633      |
| <b>New England</b>   | 17                       | 8                 | 46    | 246      | 1,269         | —            | 0                 | 0  | —                 | 7        | —            | 0                 | 0  | —        | 3        |
| Connecticut          | —                        | 0                 | 21    | —        | 653           | —            | 0                 | 0  | —                 | 5        | —            | 0                 | 0  | —        | 3        |
| Maine¶               | 12                       | 0                 | 12    | 42       | 192           | —            | 0                 | 0  | —                 | —        | —            | 0                 | 0  | —        | —        |
| Massachusetts        | —                        | 0                 | 2     | 2        | —             | —            | 0                 | 0  | —                 | 1        | —            | 0                 | 0  | —        | —        |
| New Hampshire        | 5                        | 4                 | 11    | 155      | 203           | —            | 0                 | 0  | —                 | —        | —            | 0                 | 0  | —        | —        |
| Rhode Island¶        | —                        | 0                 | 1     | 4        | —             | —            | 0                 | 0  | —                 | 1        | —            | 0                 | 0  | —        | —        |
| Vermont¶             | —                        | 1                 | 17    | 43       | 221           | —            | 0                 | 0  | —                 | —        | —            | 0                 | 0  | —        | —        |
| <b>Mid. Atlantic</b> | 13                       | 37                | 58    | 1,168    | 1,784         | —            | 0                 | 3  | 5                 | 43       | —            | 0                 | 1  | 1        | 19       |
| New Jersey           | N                        | 0                 | 0     | N        | N             | —            | 0                 | 1  | 2                 | 4        | —            | 0                 | 0  | —        | 4        |
| New York (Upstate)   | N                        | 0                 | 0     | N        | N             | —            | 0                 | 3  | 1                 | 20       | —            | 0                 | 0  | —        | 7        |
| New York City        | —                        | 0                 | 0     | —        | —             | —            | 0                 | 1  | 1                 | 8        | —            | 0                 | 1  | —        | 6        |
| Pennsylvania         | 13                       | 37                | 58    | 1,168    | 1,784         | —            | 0                 | 1  | 1                 | 11       | —            | 0                 | 1  | 1        | 2        |
| <b>E.N. Central</b>  | 64                       | 158               | 254   | 4,845    | 5,442         | —            | 0                 | 3  | 6                 | 40       | —            | 0                 | 3  | 3        | 20       |
| Illinois             | 5                        | 36                | 73    | 1,193    | 888           | —            | 0                 | 2  | 4                 | 11       | —            | 0                 | 0  | —        | 8        |
| Indiana              | —                        | 4                 | 29    | 316      | —             | —            | 0                 | 1  | 2                 | 2        | —            | 0                 | 1  | 1        | 1        |
| Michigan             | 13                       | 47                | 90    | 1,388    | 2,215         | —            | 0                 | 1  | —                 | 10       | —            | 0                 | 0  | —        | 6        |
| Ohio                 | 37                       | 42                | 91    | 1,536    | 1,716         | —            | 0                 | 1  | —                 | 13       | —            | 0                 | 2  | 2        | 1        |
| Wisconsin            | 9                        | 12                | 55    | 412      | 623           | —            | 0                 | 0  | —                 | 4        | —            | 0                 | 0  | —        | 4        |
| <b>W.N. Central</b>  | 5                        | 17                | 114   | 725      | 956           | —            | 0                 | 4  | 22                | 46       | —            | 0                 | 6  | 46       | 126      |
| Iowa                 | N                        | 0                 | 0     | N        | N             | —            | 0                 | 0  | —                 | 3        | —            | 0                 | 1  | 5        | 2        |
| Kansas               | —                        | 5                 | 22    | 183      | 356           | —            | 0                 | 2  | 3                 | 11       | —            | 0                 | 2  | 4        | 15       |
| Minnesota            | —                        | 0                 | 0     | —        | —             | —            | 0                 | 1  | 1                 | 2        | —            | 0                 | 1  | 2        | 8        |
| Missouri             | 5                        | 10                | 51    | 485      | 561           | —            | 0                 | 1  | 2                 | 11       | —            | 0                 | 0  | —        | 3        |
| Nebraska¶            | N                        | 0                 | 0     | N        | N             | —            | 0                 | 2  | 10                | 6        | —            | 0                 | 5  | 23       | 35       |
| North Dakota         | —                        | 0                 | 108   | 57       | —             | —            | 0                 | 0  | —                 | 2        | —            | 0                 | 1  | 1        | 35       |
| South Dakota         | —                        | 0                 | 4     | —        | 39            | —            | 0                 | 3  | 6                 | 11       | —            | 0                 | 2  | 11       | 28       |
| <b>S. Atlantic</b>   | 35                       | 54                | 146   | 1,554    | 3,697         | —            | 0                 | 2  | 6                 | 19       | —            | 0                 | 1  | 1        | 20       |
| Delaware             | —                        | 0                 | 4     | 8        | 35            | —            | 0                 | 0  | —                 | —        | —            | 0                 | 0  | —        | 1        |
| District of Columbia | —                        | 0                 | 3     | 8        | 20            | —            | 0                 | 0  | —                 | 4        | —            | 0                 | 0  | —        | 4        |
| Florida              | 19                       | 27                | 67    | 981      | 1,268         | —            | 0                 | 0  | —                 | 3        | —            | 0                 | 0  | —        | —        |
| Georgia              | N                        | 0                 | 0     | N        | N             | —            | 0                 | 1  | 3                 | 3        | —            | 0                 | 0  | —        | 4        |
| Maryland¶            | N                        | 0                 | 0     | N        | N             | —            | 0                 | 0  | —                 | 6        | —            | 0                 | 1  | 1        | 8        |
| North Carolina       | N                        | 0                 | 0     | N        | N             | —            | 0                 | 0  | —                 | 2        | —            | 0                 | 0  | —        | 1        |
| South Carolina¶      | —                        | 1                 | 54    | 154      | 695           | —            | 0                 | 2  | 3                 | —        | —            | 0                 | 0  | —        | 1        |
| Virginia¶            | —                        | 0                 | 119   | 28       | 1,125         | —            | 0                 | 0  | —                 | —        | —            | 0                 | 0  | —        | 1        |
| West Virginia        | 16                       | 9                 | 32    | 375      | 554           | —            | 0                 | 0  | —                 | 1        | —            | 0                 | 0  | —        | —        |
| <b>E.S. Central</b>  | —                        | 10                | 28    | 358      | 932           | —            | 0                 | 5  | 32                | 46       | —            | 0                 | 4  | 19       | 55       |
| Alabama¶             | —                        | 10                | 28    | 356      | 920           | —            | 0                 | 0  | —                 | 11       | —            | 0                 | 0  | —        | 7        |
| Kentucky             | N                        | 0                 | 0     | N        | N             | —            | 0                 | 1  | 3                 | 2        | —            | 0                 | 0  | —        | —        |
| Mississippi          | —                        | 0                 | 1     | 2        | 12            | —            | 0                 | 5  | 28                | 21       | —            | 0                 | 4  | 17       | 41       |
| Tennessee¶           | N                        | 0                 | 0     | N        | N             | —            | 0                 | 1  | 1                 | 12       | —            | 0                 | 1  | 2        | 7        |
| <b>W.S. Central</b>  | 35                       | 95                | 747   | 3,632    | 6,510         | —            | 0                 | 14 | 68                | 58       | —            | 0                 | 5  | 18       | 57       |
| Arkansas¶            | —                        | 2                 | 30    | 96       | 602           | —            | 0                 | 1  | 3                 | 6        | —            | 0                 | 0  | —        | 2        |
| Louisiana            | —                        | 1                 | 7     | 76       | 61            | —            | 0                 | 3  | 7                 | 13       | —            | 0                 | 4  | 6        | 28       |
| Oklahoma             | N                        | 0                 | 0     | N        | N             | —            | 0                 | 2  | 6                 | 2        | —            | 0                 | 0  | —        | 5        |
| Texas¶               | 35                       | 88                | 721   | 3,460    | 5,847         | —            | 0                 | 11 | 52                | 37       | —            | 0                 | 3  | 12       | 22       |
| <b>Mountain</b>      | 18                       | 31                | 83    | 988      | 1,608         | —            | 0                 | 6  | 43                | 86       | —            | 0                 | 12 | 63       | 177      |
| Arizona              | —                        | 0                 | 0     | —        | —             | —            | 0                 | 5  | 12                | 47       | —            | 0                 | 2  | 4        | 47       |
| Colorado             | 18                       | 12                | 44    | 420      | 666           | —            | 0                 | 4  | 13                | 16       | —            | 0                 | 11 | 38       | 53       |
| Idaho¶               | N                        | 0                 | 0     | N        | N             | —            | 0                 | 1  | 2                 | 4        | —            | 0                 | 2  | 6        | 35       |
| Montana¶             | —                        | 2                 | 20    | 105      | 233           | —            | 0                 | 1  | 2                 | —        | —            | 0                 | 1  | 2        | 5        |
| Nevada¶              | N                        | 0                 | 0     | N        | N             | —            | 0                 | 2  | 7                 | 8        | —            | 0                 | 1  | 5        | 7        |
| New Mexico¶          | —                        | 2                 | 20    | 134      | 173           | —            | 0                 | 2  | 5                 | 5        | —            | 0                 | 1  | 2        | 2        |
| Utah                 | —                        | 12                | 31    | 329      | 526           | —            | 0                 | 0  | —                 | 6        | —            | 0                 | 0  | —        | 20       |
| Wyoming¶             | —                        | 0                 | 1     | —        | 10            | —            | 0                 | 1  | 2                 | —        | —            | 0                 | 2  | 6        | 8        |
| <b>Pacific</b>       | 1                        | 2                 | 7     | 81       | 101           | —            | 0                 | 9  | 54                | 270      | —            | 0                 | 11 | 48       | 156      |
| Alaska               | —                        | 1                 | 6     | 50       | 50            | —            | 0                 | 0  | —                 | —        | —            | 0                 | 0  | —        | —        |
| California           | —                        | 0                 | 0     | —        | —             | —            | 0                 | 8  | 35                | 265      | —            | 0                 | 6  | 33       | 142      |
| Hawaii               | 1                        | 1                 | 4     | 31       | 51            | —            | 0                 | 0  | —                 | —        | —            | 0                 | 0  | —        | —        |
| Oregon¶              | N                        | 0                 | 0     | N        | N             | —            | 0                 | 1  | 1                 | 3        | —            | 0                 | 3  | 6        | 13       |
| Washington           | N                        | 0                 | 0     | N        | N             | —            | 0                 | 4  | 18                | 2        | —            | 0                 | 3  | 9        | 1        |
| American Samoa       | N                        | 0                 | 0     | N        | N             | —            | 0                 | 0  | —                 | —        | —            | 0                 | 0  | —        | —        |
| C.N.M.I.             | —                        | —                 | —     | —        | —             | —            | —                 | —  | —                 | —        | —            | —                 | —  | —        | —        |
| Guam                 | —                        | 2                 | 3     | —        | 55            | —            | 0                 | 0  | —                 | —        | —            | 0                 | 0  | —        | —        |
| Puerto Rico          | 1                        | 8                 | 26    | 342      | 462           | —            | 0                 | 0  | —                 | —        | —            | 0                 | 0  | —        | —        |
| U.S. Virgin Islands  | —                        | 0                 | 0     | —        | —             | —            | 0                 | 0  | —                 | —        | —            | 0                 | 0  | —        | —        |

C.N.M.I.: Commonwealth of Northern Mariana Islands.

U: Unavailable. —: No reported cases. N: Not reportable. Cum: Cumulative year-to-date counts. Med: Median. Max: Maximum.

\* Incidence data for reporting year 2009 is provisional. Data for HIV/AIDS, AIDS, and TB, when available, are displayed in Table IV, which appears quarterly.

† Updated weekly from reports to the Division of Vector-Borne Infectious Diseases, National Center for Zoonotic, Vector-Borne, and Enteric Diseases (ArboNET Surveillance).

§ Data for California serogroup, eastern equine, Powassan, St. Louis, and western equine diseases are available in Table I.

¶ Not reportable in all states. Data from states where the condition is not reportable are excluded from this table, except starting in 2007 for the domestic arboviral diseases and influenza-associated pediatric mortality, and in 2003 for SARS-CoV. Reporting exceptions are available at <http://www.cdc.gov/epo/dphsi/pbs/infdis.htm>.

¶ Contains data reported through the National Electronic Disease Surveillance System (NEDSS).

TABLE III. Deaths in 122 U.S. cities,\* week ending October 3, 2009 (39th)

| Reporting area       | All causes, by age (years) |       |       |       |      |    |           | Reporting area       | All causes, by age (years) |              |              |            |            |            |            |
|----------------------|----------------------------|-------|-------|-------|------|----|-----------|----------------------|----------------------------|--------------|--------------|------------|------------|------------|------------|
|                      | All Ages                   | ≥65   | 45-64 | 25-44 | 1-24 | <1 | P&† Total |                      | All Ages                   | ≥65          | 45-64        | 25-44      | 1-24       | <1         | P&† Total  |
| <b>New England</b>   | 469                        | 321   | 106   | 27    | 9    | 6  | 43        | <b>S. Atlantic</b>   | 1,094                      | 652          | 284          | 105        | 28         | 25         | 57         |
| Boston, MA           | 128                        | 83    | 31    | 9     | 3    | 2  | 12        | Atlanta, GA          | 123                        | 82           | 26           | 12         | 3          | —          | 3          |
| Bridgeport, CT       | 26                         | 18    | 6     | 1     | 1    | —  | 1         | Baltimore, MD        | 145                        | 77           | 47           | 14         | 2          | 5          | 15         |
| Cambridge, MA        | 11                         | 8     | 2     | 1     | —    | —  | 1         | Charlotte, NC        | 75                         | 49           | 17           | 7          | —          | 2          | 6          |
| Fall River, MA       | 27                         | 24    | 2     | 1     | —    | —  | 5         | Jacksonville, FL     | 110                        | 68           | 27           | 9          | 4          | 2          | 4          |
| Hartford, CT         | 38                         | 28    | 7     | 3     | —    | —  | 3         | Miami, FL            | 77                         | 51           | 17           | 6          | 3          | —          | 4          |
| Lowell, MA           | 18                         | 13    | 2     | —     | 3    | —  | 2         | Norfolk, VA          | 41                         | 24           | 11           | 3          | 2          | 1          | 1          |
| Lynn, MA             | 7                          | 6     | 1     | —     | —    | —  | 1         | Richmond, VA         | 66                         | 36           | 24           | 5          | 1          | —          | 5          |
| New Bedford, MA      | 16                         | 12    | 2     | 2     | —    | —  | —         | Savannah, GA         | 50                         | 28           | 13           | 7          | —          | 2          | 5          |
| New Haven, CT        | 28                         | 15    | 12    | —     | —    | 1  | 5         | St. Petersburg, FL   | 42                         | 27           | 8            | 3          | 1          | 3          | 1          |
| Providence, RI       | 50                         | 35    | 9     | 4     | 1    | 1  | 3         | Tampa, FL            | 205                        | 124          | 52           | 18         | 4          | 7          | 8          |
| Somerville, MA       | 3                          | 2     | —     | 1     | —    | —  | —         | Washington, D.C.     | 149                        | 81           | 41           | 16         | 8          | 3          | 3          |
| Springfield, MA      | 32                         | 24    | 5     | 1     | 1    | 1  | —         | Wilmington, DE       | 11                         | 5            | 1            | 5          | —          | —          | 2          |
| Waterbury, CT        | 27                         | 19    | 6     | 2     | —    | —  | 3         | <b>E.S. Central</b>  | 807                        | 472          | 229          | 58         | 22         | 26         | 65         |
| Worcester, MA        | 58                         | 34    | 21    | 2     | —    | 1  | 7         | Birmingham, AL       | 184                        | 113          | 48           | 13         | 8          | 2          | 12         |
| <b>Mid. Atlantic</b> | 1,688                      | 1,184 | 355   | 83    | 33   | 33 | 95        | Chattanooga, TN      | 49                         | 26           | 18           | 2          | 2          | 1          | 3          |
| Albany, NY           | 43                         | 29    | 10    | 2     | —    | 2  | 4         | Knoxville, TN        | 115                        | 75           | 30           | 6          | 1          | 3          | 16         |
| Allentown, PA        | 26                         | 21    | 4     | —     | 1    | —  | —         | Lexington, KY        | 60                         | 35           | 19           | 3          | 1          | 2          | 1          |
| Buffalo, NY          | 82                         | 59    | 17    | 3     | —    | 3  | 6         | Memphis, TN          | 153                        | 76           | 46           | 18         | 7          | 6          | 13         |
| Camden, NJ           | 31                         | 11    | 14    | 3     | 2    | 1  | —         | Mobile, AL           | 61                         | 36           | 20           | 3          | —          | 2          | 5          |
| Elizabeth, NJ        | 20                         | 13    | 5     | —     | 1    | 1  | 1         | Montgomery, AL       | 42                         | 24           | 14           | 3          | —          | 1          | 6          |
| Erie, PA             | 47                         | 38    | 8     | —     | 1    | —  | 2         | Nashville, TN        | 143                        | 87           | 34           | 10         | 3          | 9          | 9          |
| Jersey City, NJ      | 22                         | 17    | 5     | —     | —    | —  | 5         | <b>W.S. Central</b>  | 1,014                      | 630          | 256          | 64         | 35         | 29         | 44         |
| New York City, NY    | 950                        | 678   | 192   | 50    | 16   | 14 | 39        | Austin, TX           | 87                         | 56           | 17           | 7          | 6          | 1          | 8          |
| Newark, NJ           | 37                         | 19    | 10    | 1     | —    | 7  | 4         | Baton Rouge, LA      | 47                         | 31           | 10           | 2          | 1          | 3          | —          |
| Paterson, NJ         | 4                          | 4     | —     | —     | —    | —  | —         | Corpus Christi, TX   | U                          | U            | U            | U          | U          | U          | U          |
| Philadelphia, PA     | 131                        | 71    | 39    | 11    | 8    | 2  | 4         | Dallas, TX           | 191                        | 109          | 50           | 14         | 8          | 10         | 11         |
| Pittsburgh, PA§      | 38                         | 22    | 12    | 2     | 1    | 1  | 3         | El Paso, TX          | 66                         | 51           | 9            | 4          | 1          | 1          | 2          |
| Reading, PA          | 28                         | 24    | 2     | 2     | —    | —  | 2         | Fort Worth, TX       | U                          | U            | U            | U          | U          | U          | U          |
| Rochester, NY        | 125                        | 101   | 17    | 4     | 1    | 2  | 15        | Houston, TX          | 332                        | 191          | 97           | 24         | 9          | 11         | 11         |
| Schenectady, NY      | 12                         | 9     | 3     | —     | —    | —  | —         | Little Rock, AR      | 91                         | 54           | 24           | 6          | 4          | 3          | 1          |
| Scranton, PA         | 34                         | 30    | 3     | —     | 1    | —  | 5         | New Orleans, LA      | U                          | U            | U            | U          | U          | U          | U          |
| Syracuse, NY         | 16                         | 12    | 1     | 2     | 1    | —  | 5         | San Antonio, TX      | U                          | U            | U            | U          | U          | U          | U          |
| Trenton, NJ          | 23                         | 14    | 9     | —     | —    | —  | —         | Shreveport, LA       | 71                         | 51           | 19           | 1          | —          | —          | 5          |
| Utica, NY            | 7                          | 3     | 3     | 1     | —    | —  | —         | Tulsa, OK            | 129                        | 87           | 30           | 6          | 6          | —          | 6          |
| Yonkers, NY          | 12                         | 9     | 1     | 2     | —    | —  | —         | <b>Mountain</b>      | 1,010                      | 662          | 229          | 69         | 26         | 23         | 62         |
| <b>E.N. Central</b>  | 1,423                      | 967   | 332   | 65    | 32   | 27 | 96        | Albuquerque, NM      | 120                        | 87           | 22           | 7          | 3          | 1          | 9          |
| Akron, OH            | 35                         | 18    | 13    | 2     | 2    | —  | 2         | Boise, ID            | 42                         | 28           | 11           | 3          | —          | —          | 3          |
| Canton, OH           | 40                         | 29    | 11    | —     | —    | —  | 2         | Colorado Springs, CO | 58                         | 45           | 11           | 2          | —          | —          | 3          |
| Chicago, IL          | U                          | U     | U     | U     | U    | U  | U         | Denver, CO           | 78                         | 50           | 17           | 3          | 3          | 5          | 5          |
| Cincinnati, OH       | 79                         | 47    | 19    | 4     | 4    | 5  | 9         | Las Vegas, NV        | 244                        | 141          | 70           | 22         | 9          | 2          | 19         |
| Cleveland, OH        | 199                        | 127   | 54    | 8     | 8    | 2  | 7         | Ogden, UT            | 27                         | 19           | 5            | 1          | —          | 2          | 2          |
| Columbus, OH         | 210                        | 134   | 56    | 9     | 4    | 7  | 19        | Phoenix, AZ          | 162                        | 89           | 42           | 15         | 6          | 9          | 8          |
| Dayton, OH           | 97                         | 76    | 17    | 3     | —    | 1  | 6         | Pueblo, CO           | 27                         | 22           | 2            | 2          | 1          | —          | —          |
| Detroit, MI          | U                          | U     | U     | U     | U    | U  | U         | Salt Lake City, UT   | 90                         | 59           | 15           | 11         | 2          | 3          | 5          |
| Evansville, IN       | 31                         | 19    | 11    | 1     | —    | —  | 1         | Tucson, AZ           | 162                        | 122          | 34           | 3          | 2          | 1          | 8          |
| Fort Wayne, IN       | 69                         | 53    | 12    | 4     | —    | —  | 3         | <b>Pacific</b>       | 1,504                      | 1,038        | 316          | 93         | 27         | 30         | 126        |
| Gary, IN             | 9                          | 4     | 2     | 1     | 1    | 1  | —         | Berkeley, CA         | 12                         | 8            | 3            | 1          | —          | —          | 1          |
| Grand Rapids, MI     | 53                         | 40    | 11    | —     | 2    | —  | 2         | Fresno, CA           | 118                        | 83           | 18           | 14         | 1          | 2          | 6          |
| Indianapolis, IN     | 163                        | 105   | 41    | 8     | 3    | 6  | 9         | Glendale, CA         | 34                         | 28           | 6            | —          | —          | —          | 5          |
| Lansing, MI          | 40                         | 31    | 7     | 2     | —    | —  | 1         | Honolulu, HI         | 78                         | 62           | 13           | 2          | —          | 1          | 9          |
| Milwaukee, WI        | 97                         | 69    | 21    | 6     | —    | 1  | 9         | Long Beach, CA       | 57                         | 34           | 19           | 3          | 1          | —          | 5          |
| Peoria, IL           | 42                         | 31    | 8     | 1     | 1    | 1  | 6         | Los Angeles, CA      | 224                        | 142          | 48           | 15         | 7          | 12         | 29         |
| Rockford, IL         | 60                         | 38    | 15    | 6     | —    | 1  | 7         | Pasadena, CA         | 25                         | 15           | 7            | 1          | —          | 2          | 1          |
| South Bend, IN       | 49                         | 35    | 8     | 3     | 3    | —  | 7         | Portland, OR         | 36                         | 21           | 9            | 4          | 2          | —          | 3          |
| Toledo, OH           | 87                         | 59    | 16    | 6     | 4    | 2  | 3         | Sacramento, CA       | 186                        | 126          | 42           | 7          | 8          | 3          | 15         |
| Youngstown, OH       | 63                         | 52    | 10    | 1     | —    | —  | 3         | San Diego, CA        | 170                        | 122          | 34           | 9          | —          | 5          | 10         |
| <b>W.N. Central</b>  | 580                        | 383   | 143   | 24    | 14   | 14 | 32        | San Francisco, CA    | 103                        | 73           | 19           | 9          | 1          | 1          | 12         |
| Des Moines, IA       | 52                         | 35    | 9     | 3     | 1    | 4  | 2         | San Jose, CA         | 183                        | 127          | 43           | 8          | 2          | 3          | 16         |
| Duluth, MN           | 30                         | 23    | 6     | —     | —    | 1  | 1         | Santa Cruz, CA       | 33                         | 24           | 7            | 2          | —          | —          | 3          |
| Kansas City, KS      | 29                         | 17    | 10    | 1     | 1    | —  | —         | Seattle, WA          | 90                         | 60           | 20           | 8          | 1          | 1          | 2          |
| Kansas City, MO      | 93                         | 51    | 26    | 8     | 5    | 3  | 6         | Spokane, WA          | 64                         | 51           | 11           | 2          | —          | —          | 4          |
| Lincoln, NE          | 35                         | 32    | 3     | —     | —    | —  | 2         | Tacoma, WA           | 91                         | 62           | 17           | 8          | 4          | —          | 5          |
| Minneapolis, MN      | 57                         | 40    | 12    | 2     | 2    | 1  | 4         | <b>Total¶</b>        | <b>9,589</b>               | <b>6,309</b> | <b>2,250</b> | <b>588</b> | <b>226</b> | <b>213</b> | <b>620</b> |
| Omaha, NE            | 66                         | 44    | 18    | 2     | —    | 2  | 4         |                      |                            |              |              |            |            |            |            |
| St. Louis, MO        | 89                         | 46    | 29    | 5     | 5    | 2  | 8         |                      |                            |              |              |            |            |            |            |
| St. Paul, MN         | 55                         | 43    | 11    | —     | —    | 1  | 5         |                      |                            |              |              |            |            |            |            |
| Wichita, KS          | 74                         | 52    | 19    | 3     | —    | —  | —         |                      |                            |              |              |            |            |            |            |

U: Unavailable. —:No reported cases.

\* Mortality data in this table are voluntarily reported from 122 cities in the United States, most of which have populations of >100,000. A death is reported by the place of its occurrence and by the week that the death certificate was filed. Fetal deaths are not included.

† Pneumonia and influenza.

§ Because of changes in reporting methods in this Pennsylvania city, these numbers are partial counts for the current week. Complete counts will be available in 4 to 6 weeks.

¶ Total includes unknown ages.

The *Morbidity and Mortality Weekly Report (MMWR)* Series is prepared by the Centers for Disease Control and Prevention (CDC) and is available free of charge in electronic format. To receive an electronic copy each week, visit *MMWR's* free subscription page at <http://www.cdc.gov/mmwr/mmwrsubscribe.html>. Paper copy subscriptions are available through the Superintendent of Documents, U.S. Government Printing Office, Washington, DC 20402; telephone 202-512-1800.

Data in the weekly *MMWR* are provisional, based on weekly reports to CDC by state health departments. The reporting week concludes at close of business on Friday; compiled data on a national basis are officially released to the public on the following Friday. Data are compiled in the National Center for Public Health Informatics, Division of Integrated Surveillance Systems and Services. Address all inquiries about the *MMWR* Series, including material to be considered for publication, to Editor, *MMWR* Series, Mailstop E-90, CDC, 1600 Clifton Rd., N.E., Atlanta, GA 30333 or to [mmwrq@cdc.gov](mailto:mmwrq@cdc.gov).

All material in the *MMWR* Series is in the public domain and may be used and reprinted without permission; citation as to source, however, is appreciated.

Use of trade names and commercial sources is for identification only and does not imply endorsement by the U.S. Department of Health and Human Services.

References to non-CDC sites on the Internet are provided as a service to *MMWR* readers and do not constitute or imply endorsement of these organizations or their programs by CDC or the U.S. Department of Health and Human Services. CDC is not responsible for the content of these sites. URL addresses listed in *MMWR* were current as of the date of publication.