

MMWRTM
**MORBIDITY AND MORTALITY
WEEKLY REPORT**

- 89 American Heart Month — February 2001
- 90 Mortality From Coronary Heart Disease and Acute Myocardial Infarction — United States, 1998
- 94 Impact of the 1999 AAP/USPHS Joint Statement on Thimerosal in Vaccines on Infant Hepatitis B Vaccination Practices
- 97 Notices to Readers

American Heart Month — February 2001

February is American Heart Month. During the month, the CDC-funded New York State Department of Health cardiovascular health program and other organizations are sponsoring the Regional Cardiovascular Health Summit, which will focus on improving the quality of prevention activities in health-care systems. An estimated 12 million persons residing in the United States have coronary heart disease (CHD) (1), which includes myocardial infarction, angina pectoris (chest pain), or both. During 1998, approximately 460,000 persons died of CHD; 44% of these deaths were attributed to acute myocardial infarction. CHD can be prevented by reducing or controlling high cholesterol, high blood pressure, and diabetes, by abstaining from smoking, adopting a healthy diet, and engaging in moderate physical activity and weight management. Many deaths and much disability also can be prevented by early recognition of heart attack symptoms, prompt response from and transportation to an emergency department, and timely, appropriate treatment (2).

Many of the 25 CDC-funded state programs work with their American Heart Association affiliate and state peer review organizations to promote health system policy changes related to improving risk-reduction counseling, appropriate treatment of patients with CHD, and other prevention measures. Information about CHD warning signs, risk factors, and treatments and scientific statements on health-care quality initiatives are available on the World-Wide Web from the National Heart, Lung, and Blood Institute, <http://www.nhlbi.nih.gov>, the Health Care Financing Administration, <http://www.hcfa.gov/quality/3y.htm>, and the American Heart Association, <http://www.americanheart.org>*. Information about CDC-supported state cardiovascular health programs is available at <http://www.cdc.gov/nccdphp>.

References

1. Cooper R, Cutler J, Desvigne-Nickens P, et al. Trends and disparities in coronary heart disease, stroke, and other cardiovascular diseases in the United States. *Circulation* 2000;102:3137-47.
2. National Heart Attack Alert Program Coordinating Committee. Educational strategies to prevent prehospital delay in patients at high risk for acute myocardial infarction. Bethesda, Maryland: National Heart, Lung, and Blood Institute, September 1997 (National Institutes of Health publication no. 97-3787).

*References to sites of non-CDC organizations on the Internet are provided as a service to *MMWR* readers and do not constitute or imply endorsement of these organizations or their programs by CDC or the U.S. Department of Health and Human Services. CDC is not responsible for the content of pages found at these sites.

Mortality From Coronary Heart Disease and Acute Myocardial Infarction — United States, 1998

Despite improved clinical care, heightened public awareness, and widespread use of health innovations, coronary heart disease (CHD) remains the leading cause of death in the United States (1,2), and the decline in rates from CHD that began during the 1960s slowed during the 1990s (3). This report provides national and state-specific death rates for CHD and for acute myocardial infarction (AMI). During 2001, approximately 1.1 million persons are expected to have a CHD event (1). Prevention remains the key strategy for reducing CHD mortality.

National and state mortality statistics are based on information from death certificates filed in state vital statistics offices and are compiled by CDC's National Center for Health Statistics (4). Demographics (e.g., age and race/ethnicity) listed on death certificates are reported by funeral directors or provided by family members of the decedent. CHD deaths are those in which the underlying cause of death listed on the death certificate by a physician, medical examiner, or coroner is *International Classification of Diseases, Ninth Revision*, codes 410.0–414.9 (5). CHD includes AMI (410), other acute and subacute forms of ischemic heart disease (411), old myocardial infarction (412), angina pectoris (413), and other forms of chronic ischemic heart disease (414.0–414.9). Populations at risk are defined on the basis of U.S. Bureau of Census estimates of resident populations. Age-adjusted estimates are standardized to the 2000 U.S. population. Because only 0.2% of CHD deaths and 0.3% of AMI deaths occur among persons aged <35 years, the age-adjusted death rates have been limited to persons aged ≥35 years.

The annual percentage change in U.S. death rates for CHD during 1950–1959, 1960–1969, 1970–1979, 1980–1989, and 1990–1997 was 2.1, 0.2, –3.1, –3.3, and –2.7, respectively (3). During 1998, CHD was reported as the underlying cause of 459,841 deaths; 203,551 (44%) were attributed to AMI. During 1998, age-specific death rates per 100,000 persons increased among successive age groups for CHD and AMI. Among persons aged ≥85 years, the 1998 CHD death rate was 3743.9, which was three times higher than the rate among persons aged 75–84 years (1252.2), seven times higher than among persons aged 65–74 years (487.2), and 21 times higher than among persons aged 55–64 years (180.7) (Table 1).

The age-adjusted death rate among persons aged ≥35 years was higher among men than women (222.4 versus 135.8 per 100,000 for CHD and 99.7 versus 58.8 per 100,000 for AMI, respectively). CHD death rates were highest among white men (440.0) and second highest among black men (421.6). AMI deaths were similar among both groups (196.7 and 198.7 for white and black men, respectively) (Table 2). Compared with white men, American Indian/Alaska Native men and Asian/Pacific Islander men had much lower death rates for CHD (246.7 and 258.3, respectively) and AMI (120.9 and 109.1, respectively). Black women had the highest death rates for CHD (301.9) and AMI (140.4), followed by white (263.8 and 113.2 for CHD and AMI, respectively), American Indian/Alaska Native, (160.2 and 69.3 for CHD and AMI, respectively) and Asian/Pacific Islander (148.1 and 62.2 for CHD and AMI, respectively) women (Table 2). Compared with black and white men and women, Hispanics had lower death rates for CHD (285.4 and 189.8 for men and women, respectively) and AMI (121.6 and 76.7 for men and women, respectively) (Table 2). State variations in age-adjusted death rates for CHD and AMI ranged from 208.1 (New Mexico) to 440.6 (New York) for CHD and from 80.5 (New Mexico) to 252.6 (Arkansas) for AMI (Table 3).

Coronary Heart Disease — Continued

TABLE 1. Age-specific death rates* for coronary heart disease† and acute myocardial infarction‡ — United States, 1998

| Age group (yrs) | Coronary heart disease | | Acute myocardial infarction | |
|-----------------|------------------------|---------|-----------------------------|---------|
| | No. | Rate | No. | Rate |
| <25 | 160 | 0.2 | 88 | 0.1 |
| 25–34 | 936 | 2.4 | 488 | 1.3 |
| 35–44 | 6,535 | 14.7 | 3,489 | 7.8 |
| 45–54 | 20,165 | 58.3 | 11,196 | 32.4 |
| 55–64 | 40,968 | 180.7 | 22,227 | 98.0 |
| 65–74 | 89,625 | 487.2 | 43,730 | 237.7 |
| 75–84 | 149,668 | 1,252.2 | 66,288 | 554.6 |
| ≥85 | 151,765 | 3,743.9 | 56,038 | 1,382.4 |

* Per 100,000 population.

† *International Classification of Diseases, Ninth Revision*, codes 410.0–414.9.

‡ Code 410.

TABLE 2. Age-adjusted death rates* for coronary heart disease† and acute myocardial infarction‡ for persons aged ≥35 years, by sex and race/ethnicity — United States, 1998

| Sex | Coronary heart disease | | Acute myocardial infarction | |
|-------------------------------|------------------------|-------|-----------------------------|-------|
| | No. | Rate | No. | Rate |
| Men | | | | |
| White | 209,457 | 440.0 | 95,617 | 196.7 |
| Black | 19,138 | 421.6 | 9,185 | 198.7 |
| Hispanic | 8,431 | 285.4 | 3,735 | 121.6 |
| Asian/Pacific Islander | 3,247 | 258.3 | 1,417 | 109.1 |
| American Indian/Alaska Native | 750 | 246.7 | 377 | 120.9 |
| Women | | | | |
| White | 202,056 | 263.8 | 85,248 | 113.2 |
| Black | 21,202 | 301.9 | 9,873 | 140.4 |
| Hispanic | 7,602 | 189.8 | 3,102 | 76.7 |
| Asian/Pacific Islander | 2,259 | 148.1 | 607 | 62.2 |
| American Indian/Alaska Native | 617 | 160.2 | 268 | 69.3 |

* Per 100,000 population. Standardized to the 2000 U.S. Bureau of the Census population of persons aged ≥35 years.

† *International Classification of Diseases, Ninth Revision*, codes 410.0–414.9.

‡ Code 410.

Reported by: Cardiovascular Health Studies Br, Div of Adult and Community Health, National Center for Chronic Disease Prevention and Health Promotion; and EIS officers, CDC.

Editorial Note: An estimated 12 million persons in the United States have CHD (3). Of the 1.1 million persons who are expected to have a CHD event during 2001, approximately 650,000 will be first events and 450,000 will be recurrences. Each year, approximately 220,000 fatal CHD events occur suddenly among unhospitalized persons (1). The slowing decline in CHD death rates may be explained by the pattern of CHD risk factors reported during the 1990s (3). Minimal, if any, improvement has occurred in preventive behaviors (e.g., adequate physical activity, cessation of smoking, and the control of high blood pressure) (3). In addition, an increase has been reported in caloric consumption and the prevalence of obesity and diabetes (3). Factors that may have

Coronary Heart Disease — Continued

TABLE 3. Age-adjusted death rates* for coronary heart disease† and acute myocardial infarction‡ among persons aged ≥35 years, by state — United States, 1998

| State | Coronary heart disease | | Acute myocardial infarction | |
|----------------------|------------------------|--------------|-----------------------------|--------------|
| | No. | Rate | No. | Rate |
| Alabama | 6,456 | 290.4 | 3,480 | 156.1 |
| Alaska | 317 | 212.4 | 136 | 89.5 |
| Arizona | 6,537 | 281.2 | 2,802 | 119.6 |
| Arkansas | 5,490 | 383.3 | 3,604 | 252.6 |
| California | 46,502 | 327.3 | 17,387 | 121.9 |
| Colorado | 3,852 | 235.9 | 1,799 | 109.2 |
| Connecticut | 5,443 | 283.9 | 1,887 | 99.3 |
| Delaware | 1,082 | 301.5 | 516 | 143.2 |
| District of Columbia | 711 | 245.9 | 343 | 118.6 |
| Florida | 35,701 | 347.1 | 13,108 | 128.3 |
| Georgia | 9,236 | 302.5 | 4,818 | 156.3 |
| Hawaii | 1,248 | 208.6 | 511 | 84.8 |
| Idaho | 1,570 | 275.6 | 893 | 156.4 |
| Illinois | 21,356 | 353.4 | 10,493 | 173.9 |
| Indiana | 10,840 | 367.9 | 4,820 | 163.3 |
| Iowa | 6,109 | 335.1 | 2,770 | 156.0 |
| Kansas | 4,423 | 301.4 | 2,027 | 140.0 |
| Kentucky | 7,335 | 374.5 | 4,282 | 217.6 |
| Louisiana | 6,362 | 318.3 | 3,709 | 184.1 |
| Maine | 2,237 | 321.0 | 990 | 142.7 |
| Maryland | 6,492 | 281.5 | 3,349 | 144.1 |
| Massachusetts | 9,780 | 280.3 | 4,271 | 123.3 |
| Michigan | 17,231 | 358.7 | 7,903 | 163.9 |
| Minnesota | 5,906 | 241.1 | 2,473 | 101.5 |
| Mississippi | 4,732 | 356.0 | 2,688 | 202.0 |
| Missouri | 12,261 | 407.3 | 6,121 | 205.0 |
| Montana | 1,112 | 231.8 | 478 | 99.7 |
| Nebraska | 2,516 | 262.1 | 968 | 102.8 |
| Nevada | 1,787 | 244.5 | 740 | 96.3 |
| New Hampshire | 1,753 | 308.2 | 698 | 132.1 |
| New Jersey | 15,467 | 355.5 | 6,543 | 150.2 |
| New Mexico | 1,596 | 208.1 | 626 | 80.5 |
| New York | 42,786 | 440.6 | 13,419 | 138.5 |
| North Carolina | 12,421 | 338.1 | 5,598 | 152.2 |
| North Dakota | 1,149 | 295.8 | 591 | 155.7 |
| Ohio | 21,904 | 373.5 | 9,130 | 155.5 |
| Oklahoma | 7,253 | 403.1 | 2,713 | 151.1 |
| Oregon | 4,657 | 265.4 | 1,818 | 103.7 |
| Pennsylvania | 24,587 | 340.8 | 12,145 | 165.2 |
| Rhode Island | 2,213 | 357.6 | 1,052 | 173.3 |
| South Carolina | 6,217 | 344.5 | 3,442 | 189.0 |
| South Dakota | 1,358 | 310.8 | 727 | 168.8 |
| Tennessee | 10,541 | 392.0 | 5,620 | 207.8 |
| Texas | 27,304 | 342.1 | 14,474 | 180.4 |
| Utah | 1,631 | 222.4 | 764 | 103.9 |
| Vermont | 818 | 276.6 | 340 | 115.1 |
| Virginia | 9,162 | 303.0 | 4,223 | 138.6 |
| Washington | 6,843 | 258.2 | 2,910 | 109.6 |
| West Virginia | 4,263 | 399.5 | 1,964 | 183.8 |
| Wisconsin | 8,918 | 315.3 | 4,444 | 158.5 |
| Wyoming | 661 | 297.7 | 361 | 161.0 |
| Total¶ | 459,841 | 337.3 | 203,551 | 149.1 |

* Per 100,000 population. Standardized to the 2000 U.S. Bureau of the Census population of persons aged ≥35 years.

† *International Classification of Diseases, Ninth Revision*, codes 410.0–414.9.

‡ Code 410.

¶ Total U.S. population, all ages.

Coronary Heart Disease — Continued

contributed to the racial/ethnic differences, particularly those between black and white women, include differences in CHD risk factors, case fatality rates, medical care, socioeconomic status, and state of residence (6).

The findings in this report are subject to at least two limitations. First, the data are subject to misclassification of race/ethnicity in the population census and on death certificates, which may result in undercounting of deaths among American Indians/Alaska Natives, Asians/Pacific Islanders, and Hispanics and overcounting of deaths among black and white populations (7). Second, there is no medical record verification of death certificate data on multiple-cause mortality records. The reliability and accuracy of underlying cause depends on the certifier of each death and the state and national nosologists who determine the codes and the underlying causes.

CDC funds 25 state-based cardiovascular health programs designed to prevent the first heart attack and promote a greater decline in death and disability from CHD. Measures intended to prevent a first AMI promote policy changes (e.g., health-care providers implementing American Heart Association AMI prevention guidelines) and behavioral changes that affect cardiovascular-related risk factors (e.g., high blood pressure, high cholesterol, cigarette smoking, physical inactivity, and poor nutrition). Myocardial damage, disability, and death can be forestalled if affected persons recognize AMI warning symptoms and reach medical care quickly (8). To reduce delays in receiving treatment (8) and preventing disability following a CHD event, emergency medical care often can be obtained rapidly by telephoning 911. Other interventions consist of therapeutic measures to minimize the risk for a second heart attack and subsequent heart failure (9), education to promote physician adherence to clinical practice guidelines, and recommendations for the appropriate treatment of CHD patients.

References

1. American Heart Association. 2001 Heart and stroke statistical update. Dallas, Texas: American Heart Association, 2000. Available at <http://www.americanheart.org/statistics/index.html>. Accessed February 2001.
2. CDC. Decline in deaths from heart disease and stroke—United States, 1900–1999. *MMWR* 1999;48:649–56.
3. Cooper R, Cutler J, Desvigne-Nickens P, et al. Trends and disparities in coronary heart disease, stroke, and other cardiovascular diseases in the United States. *Circulation* 2000;102:3137–47.
4. Murphy SL. Deaths: final data for 1998. *National vital statistics reports*; Vol 48, no. 11. Hyattsville, Maryland: National Center for Health Statistics, 2000.
5. World Health Organization. *Manual of the international statistical classification of diseases, injuries, and causes of death based on the recommendations of the Ninth Revision Conference, 1975*. Geneva, Switzerland: World Health Organization, 1977.
6. Williams JE, Massing M, Rosamond WD, Sorlie PD, Tyroler HA. Racial disparities in CHD mortality from 1968–1992 in the state economic areas surrounding the ARIC study communities. *Ann Epidemiol* 1999;9:472–80.
7. Rosenberg HM, Maurer JD, Sorlie PD, et al. Quality of death rates by race and Hispanic origin: a summary of current research, 1999. *Vital Health Stat* 1999;2:1–13.
8. Goldberg RJ, Mooradd M, Gurwitz JH, et al. Impact of time to treatment with tissue plasminogen activator on morbidity and mortality following acute myocardial infarction: the second national registry of myocardial infarction. *Am J Cardiol* 1998;82:259–64.
9. Smith SC, Blair SN, Criqui MH, et al. Preventing heart attack and death in patients with coronary disease. *Circulation* 1995;92:2–4.

Impact of the 1999 AAP/USPHS Joint Statement on Thimerosal in Vaccines on Infant Hepatitis B Vaccination Practices

On July 8, 1999, the American Academy of Pediatrics (AAP) and the U.S. Public Health Service (PHS) jointly recommended reducing infant exposure to thimerosal, a commonly used vaccine preservative that contains mercury (1,2). Specific recommendations were made to postpone the first hepatitis B vaccine dose until 2–6 months of age for infants born to hepatitis B surface antigen (HBsAg)-negative (i.e., not hepatitis B virus [HBV]-infected) women (1,2). Infants born to HBsAg-positive (i.e., HBV-infected) women, or to women whose HBsAg status was unknown, were recommended to receive postexposure prophylaxis with the first dose of hepatitis B vaccine administered within 12 hours of birth (1,2). By mid-September 1999, when adequate supplies of preservative-free hepatitis B vaccine became available, PHS advocated a return to previous infant hepatitis B vaccination practices, including administering the first dose of hepatitis B vaccine to newborns in hospitals that had discontinued the practice (3). In 2000, preliminary assessments of the impact of these policy changes on routine hepatitis B vaccination practices were conducted by public health officials in Wisconsin, Oklahoma, Oregon, and Michigan. This report summarizes the results of these analyses, which indicate that many hospitals in Wisconsin have not reinstated policies to ensure routine administration of hepatitis B vaccine to newborns despite the availability of preservative-free hepatitis B vaccine, that the number of hepatitis B vaccine doses given to newborns in Oklahoma and Oregon has declined, and that an unvaccinated Michigan infant died from fulminant hepatitis B. Restoring routine newborn hepatitis B vaccination practices may require active advocacy by professional and government groups.

In Wisconsin in February 2000, the Division of Public Health mailed a survey to nurse managers of all Wisconsin birthing hospitals to assess the impact of the thimerosal statements on hepatitis B vaccination practices for newborns. Information was collected for the following periods: 1) before July 1999, 2) July–November 1999, and 3) March 2000. In Oklahoma and Oregon, data collected by previously established vaccination registries were used to assess the number of doses of hepatitis B vaccine administered to newborns before and after the publication of the thimerosal statements and after preservative-free hepatitis B vaccine became available. In Michigan, an infant death attributed to HBV was reported in January 2000, and an investigation by the Michigan Department of Community Health (MDCH) included a review of hospital and provider medical records and hospital vaccination policy changes in 1999.

Wisconsin, 1999–2000

All 110 birthing hospitals responded to the survey; 12 no longer provided obstetric services. The percentage of hospitals with written policies or standing orders for routine hepatitis B vaccination of all newborns declined from 81% before July 1999 to 10% during July–December 1999; 77% had policies or orders for routine vaccination of infants born to HBsAg-positive women during July–November 1999.

The proportion of births in hospitals where routine hepatitis B vaccination was given before discharge declined from 84% before July 1999 to 43% in March 2000. Before July 1999, 18 of 20 hospitals in southeastern Wisconsin, where 36% of HBsAg-positive pregnant women in the state resided during 1999, had written policies or standing orders to routinely provide hepatitis B vaccine to newborns. As of March 2000, five of these 18 hospitals had continued or resumed routine administration of hepatitis B vaccine to all newborns.

Thimerosal — Continued

Oklahoma and Oregon, 1999–2000

In Oklahoma and Oregon, the number of doses administered to newborns and young infants declined in July 1999 (Figure 1). In both states, the number of doses administered to newborns and young infants has not returned to pre-July 1999 levels. Among Oklahoma infants aged <1 month and Oregon infants aged <5 days, the number of hepatitis B vaccine doses administered during May–June 2000 declined 50% and 28%, respectively, compared with May–June 1999.

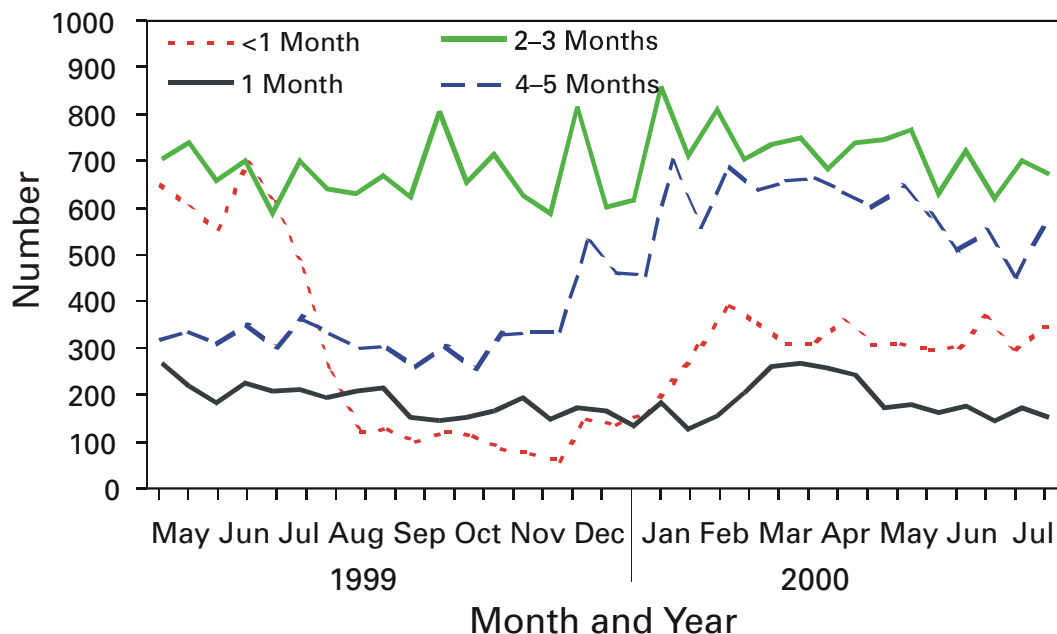
Michigan, 1999

On December 14, 1999, a previously healthy 3-month-old infant was admitted to a hospital with diarrhea and jaundice, and acute hepatic failure attributed to HBV infection was diagnosed. The infant died on December 17, 1999. The infant had not received her first dose of hepatitis B vaccine until age 2.5 months.

The infant's mother was found to be HBsAg-positive at the first of 10 prenatal visits. However, the prenatal-care record provided to the birth hospital indicated that the mother was hepatitis-negative. Neither the provider nor the laboratory reported the mother's test results to MDCH as required by law. Before July 1999, the birth hospital had routinely administered hepatitis B vaccine series to newborns before discharge but had discontinued this practice in July 1999 because of concerns about thimerosal.

Reported by: N Fasano, MA, J Blostein, MPH, Michigan Dept of Community Health. TN Saari, MD, Univ of Wisconsin, Madison; MB Hurie, MS, JP Davis, MD, Bur of Communicable Disease, Wisconsin Div of Public Health. S Dooley, ARNP, ED Rhoades, MD, Maternal and Child Health Svcs; D Blose, MA, Immunization Div, Oklahoma State Dept of Health. H Gillette, MPH, B Canavan, MPH, Immunization Program, Health Div, Oregon Dept of Human Svcs. Health Svcs Research and Evaluation Br and Program Operations Br, Div of Immunization Svcs, National Immunization Program and Hepatitis Br, Div of Viral and Rickettsial Diseases, National Center for Infectious Diseases, CDC.

FIGURE 1. Number of hepatitis B vaccine doses administered to infants, by age and 2-week interval — Oklahoma, May 1999–July 2000



Thimerosal — Continued

Editorial Note: The findings in this report indicate that the 1999 statements on thimerosal led to rapid changes in routine perinatal HBV infection prevention practices. Prevention of perinatal and early childhood infection by providing hepatitis B vaccine to newborns is a cornerstone of hepatitis B prevention strategies (4). An estimated 18,000 children aged <10 years were infected with HBV each year before universal infant hepatitis B vaccination was implemented in the United States (CDC, unpublished data, 2000). Approximately half acquired infection through perinatal transmission; the remainder acquired infection during early childhood through contact with other HBsAg-positive persons (horizontal transmission). HBV infection during infancy and childhood carries a higher risk for chronic HBV infection compared with infection during adulthood (5,6). Early hepatitis B vaccination is a safe and effective way to reduce the risk for both perinatal and horizontal HBV transmission and increases the likelihood of children completing the vaccine series on schedule (7,8).

The reported case of acute liver failure from perinatal HBV infection in Michigan underscores the problems associated with discontinuing routine hepatitis B vaccination at birth without being certain that appropriate safeguards against perinatal infection are in place. Hepatitis B vaccine administered alone is 70%–95% effective in preventing perinatal HBV infection when the first dose is given within 24 hours of birth (4). Results from the Wisconsin survey are consistent with results from a national survey of 1000 birthing hospitals conducted during December 1999, 3 months after thimerosal-free vaccine became widely available for infants. In this national survey, the percentage of hospitals with written policies or standing orders for routine hepatitis B vaccination of newborns born to HBsAg-negative women declined from 85% before the 1999 thimerosal statement to 34% in December 1999 (S.J. Clark, University of Michigan, personal communication, 2000). Of 88 hospitals that had discontinued written policies or standing orders for routine vaccination of newborn infants, including infants born to HBsAg-positive women, 67% had not reinstated the policies or standing orders (S.J. Clark, University of Michigan, personal communication, 2000).

It is unknown whether changes in hospital policies and reductions in hepatitis B vaccination coverage of newborns are causing other missed opportunities for vaccination among infants at high risk for perinatal infection, especially among those born to untested and HBsAg-positive women. The impact of the public and private health-care system response to concerns about thimerosal may not be understood fully until ongoing analysis of surveillance data and birthing hospital chart reviews provide a more complete assessment of the number of infants who acquired chronic HBV infection as the result of missed vaccination opportunities. CDC is supporting such studies in several states.

AAP and PHS advocate the reintroduction of routine hepatitis B vaccination policies for all newborn infants born in hospitals in which this practice was discontinued because of concerns about thimerosal (3,8). After administering a dose at birth, providers may complete the series with either 2 more doses of single antigen hepatitis B vaccine or with 3 doses of combination *Haemophilus influenzae* type b/hepatitis B vaccine according to previously recommended schedules (9). All birthing hospitals should have hepatitis B vaccine available for use in infants born to HBsAg-positive and untested women. Hospitals should continue to vaccinate all infants at birth until procedures are in place to guarantee that 1) the HBsAg status of every pregnant woman is available and reviewed at delivery, 2) appropriate passive-active immunoprophylaxis (HBIG and hepatitis B vaccine) is provided for infants of HBsAg-positive women within 12 hours of birth, and

Thimerosal — Continued

3) appropriate active immunoprophylaxis (hepatitis B vaccine) is provided for infants of women with an unknown HBsAg status. Pregnant women who are identified as HBsAg-positive should be reported to local or state health departments to ensure that their infants, family, and household contacts receive a full hepatitis B vaccination series.

Vaccination practices are influenced substantially by recommendations of professional and government advisory groups. The 1999 joint statement and the subsequent AAP guidelines were issued as a precautionary measure and were intended to apply only to infants born to HBsAg-negative women. The inadvertent effect in many hospitals was a persisting change in policies for administering hepatitis B vaccine to infants, most importantly to infants born to HBsAg-positive and unscreened women for whom no changes in vaccination practices had been recommended. Changes in established recommendations, especially if they occur without timely communication and education of health-care providers, may result in misinterpretation and unanticipated changes in vaccination practices.

References

1. CDC. Thimerosal in vaccines: a joint statement of the American Academy of Pediatrics and the Public Health Service. *MMWR* 1999;48:563–5.
2. American Academy of Pediatrics. Thimerosal in vaccines: an interim report to clinicians. *AAP News* 1999;15:10–2.
3. CDC. Availability of hepatitis B vaccine that does not contain thimerosal as a preservative. *MMWR* 1999;48:780–2.
4. Advisory Committee on Immunization Practices. Hepatitis B virus: a comprehensive strategy for eliminating transmission in the United States through universal childhood vaccination. *MMWR* 1991;40(no. RR-13).
5. Beasley RP, Hwang L-Y. Epidemiology of hepatocellular carcinoma. In: Vyas GN, Diestag JL, Hoofnagle JH, eds. *Viral hepatitis and liver disease*. New York: Grune & Stratton, 1984:209–24.
6. Margolis HS, Alter MJ, Hadler SC. Hepatitis B: evolving epidemiology and implications for control. *Semin Liver Dis* 1991;11:84–92.
7. Yusuf HR, Daniels D, Smith P, Coronado V, Rodewald L. Association between administration of hepatitis B vaccine at birth and completion of the hepatitis B and 4:3:1:3 vaccine series. *JAMA* 2000;284:978.
8. Pickering LK. Resume the hep B immunization at birth: AAP. *AAP News* 2000;16:1,7.
9. Atkinson W, Humiston S, Wolfe C, Nelson R, eds. *Hepatitis B*. In: *Epidemiology and prevention of vaccine-preventable diseases*. 5th ed. Atlanta, Georgia: US Department of Health and Human Services, CDC, 1999.

*Notice to Readers***Risk for Meningococcal Disease Associated With the Hajj 2001**

Every year approximately two million pilgrims from more than 140 countries gather in Saudi Arabia for a pilgrimage to the holy places of Islam known as the Hajj. Coinciding with the Hajj pilgrimage during March 2000, Saudi Arabian health officials identified an outbreak of meningococcal disease; a substantial proportion of the isolates were the bacterial strain *Neisseria meningitidis* serogroup W-135. Four cases of meningococcal disease subsequently were identified among the estimated 15,000 pilgrims returning to the United States, their close contacts, and community. In addition, approximately 400 cases of meningococcal disease caused by *N. meningitidis* serogroup W-135 were

Notices to Readers — Continued

identified worldwide during 2000 (1). Whether an outbreak of meningococcal disease will recur in 2001 is unknown.

Following an outbreak of serogroup A meningococcal disease associated with the Hajj during 1987, the Saudi Arabian government required all pilgrims to receive the meningococcal polysaccharide vaccine (2). In the United States, the available vaccine, quadrivalent meningococcal polysaccharide vaccine, contains serogroup W-135 polysaccharide. However, vaccination does not protect against asymptomatic nasopharyngeal carriage of the bacteria. Persons may transmit *N. meningitidis* infection to close contacts upon their return from Saudi Arabia, and taking an antibiotic can reduce the risk for transmission and disease. It is not known whether returning pilgrims will have increased rates of acquisition of nasopharyngeal carriage of *N. meningitidis*.

To assess the risk for meningococcal disease in returning pilgrims and their close contacts, CDC is planning to evaluate nasopharyngeal carriage among a set of pilgrims returning from the Hajj. The results of this evaluation and any recommendations will be posted on the World-Wide Web, <http://www.cdc.gov/travel>, when they become available. Information also will be available by telephone, (888) 232-3228.

References

1. Popovic T, Sacchi CT, Reeves MW, et al. *N. meningitidis* serogroup W135 isolates associated with the ET-37 complex [Letter]. *Emerg Infect Dis* 2000;6:428-9.
2. Moore PS, Harrison LH, Telzak EE, et al. Group A meningococcal carriage in travelers returning from Saudi Arabia. *JAMA* 1988;260:2686-9.

*Notice to Readers***Publication of Report on Indicators for Chronic Disease Surveillance**

In 1999, the Council of State and Territorial Epidemiologists (CSTE) released its first report on "Indicators for Chronic Disease Surveillance: Consensus of the Council of State and Territorial Epidemiologists (CSTE), Association of State and Territorial Chronic Disease Program Directors (ASTCDPD), and Centers for Disease Control and Prevention (CDC)." The document was the result of a consensus involving epidemiologists and program directors at the state and federal level. The 73 selected indicators serve as measures that states and territories can use to uniformly define, collect, and report chronic disease data.

CSTE has updated this volume with a few minor changes, and it is available in an electronic format for downloading at <http://www.cste.org/resources.htm>. Also available online on this site is the data volume that complements the case definitions, with data points for each state and each of the indicators.

CSTE intends to review and revise the indicators every several years and started the revision process at the 2000 National Conference on Chronic Disease Prevention. Other plans include developing a web-based system to view data by region, indicator, and prevention pathway.

Notices to Readers — Continued

Notice to Readers

Epidemiology in Action

CDC and Rollins School of Public Health at Emory University will co-sponsor a course, "Epidemiology in Action" during April 30–May 11, 2001, at CDC and Emory University campuses. The course is designed for state and local public health professionals.

The course will emphasize the practical application of epidemiology to public health problems and will consist of lectures, workshops, classroom exercises (including actual epidemiologic problems), and roundtable discussions. Topics covered will include descriptive epidemiology and biostatistics, analytic epidemiology, epidemic investigations, public health surveillance, surveys and sampling, Epi Info 2000 (Windows version) training, and discussions of selected prevalent diseases. There is a tuition charge.

Deadline for application is March 1, 2001. Additional information and applications are available from Emory University, International Health Dept.(PIA), 1518 Clifton Road, N.E., Room 746, Atlanta, GA 30322; telephone (404) 727-3485; fax (404) 727-4590; World-Wide Web site, <http://www.sph.emory.edu/EPICOURSES>; or e-mail pvaleri@sph.emory.edu.

Notice to Readers

**Satellite Broadcast on Epidemiology and Prevention
of Vaccine-Preventable Diseases**

CDC's National Immunization Program (NIP) and the Public Health Training Network (PHTN) will co-sponsor a live satellite broadcast for physicians, nurses, nurse practitioners, physician assistants, pharmacists, residents, medical and nursing students, and their colleagues who either give vaccinations or set policy in their workplace. The four-part series, "Epidemiology and Prevention of Vaccine-Preventable Diseases," will be broadcast on March 15, 22, and 29, and April 5, 2001, from noon to 3:30 p.m. eastern time.

The program will provide the most current information in the field of immunization. Session one will cover principles of vaccination, general recommendations on vaccination, and strategies to improve vaccination coverage levels; session two will cover pertussis, pneumococcal disease (childhood), poliomyelitis, and *Haemophilus influenzae type b*; session three will cover measles, rubella, varicella, and vaccine safety; and session four will focus on hepatitis B, hepatitis A, influenza, and pneumococcal disease (adult).

Participants will be able to interact with instructors through toll-free telephone, fax, and TTY lines. Continuing education for various professions will be offered based on 14 hours of instruction.

Information and registration are available through state or county health department immunization programs. A list of state immunization coordinators is available on the NIP World-Wide Web site, <http://www.cdc.gov/nip/ed/coordinators.htm>. Course participants will be required to obtain their own copy of the primary course text, *Epidemiology and Prevention of Vaccine-Preventable Diseases*, 6th edition (2000). The text is available from the Public Health Foundation for \$25; telephone (877) 252-1200; World-Wide Web site, <http://bookstore.phf.org>. All other course materials will be provided on site.

Notices to Readers — Continued

Notice to Readers

2001 Cancer Conference

CDC's 2001 Cancer Conference will be held September 4–7, 2001, in Atlanta, Georgia. The theme is "Using Science to Build Comprehensive Cancer Programs: A 2001 Odyssey." Co-sponsors are the American Cancer Society National Home Office, the Association of State and Territorial Chronic Disease Program Directors, and the National Cancer Institute. The conference will explore evidence-based science and how it applies in a public health setting. Short courses will be held September 4 as part of the preconference activities. The conference will assist participants in the following: 1) applying current scientific thinking to cancer prevention, early detection, diagnosis and treatment, and rehabilitation and palliation for breast, cervical, colorectal, lung, oral, ovarian, prostate, and skin cancers, and tobacco control; 2) increasing research and evaluation in communities and among populations to broaden the use of science as the basis for decision-making, policy development, program management, and implementation; 3) enhancing surveillance systems, with new and existing data, to develop cancer prevention and control program activities; 4) incorporating evidence-based approaches to improve the delivery of public health interventions for all populations in the United States; 5) using advances in medicine, communications, education, and technology to improve cancer prevention and early detection efforts; and 6) developing and applying strategies for an integrated and coordinated approach to reduce morbidity and mortality from cancer.

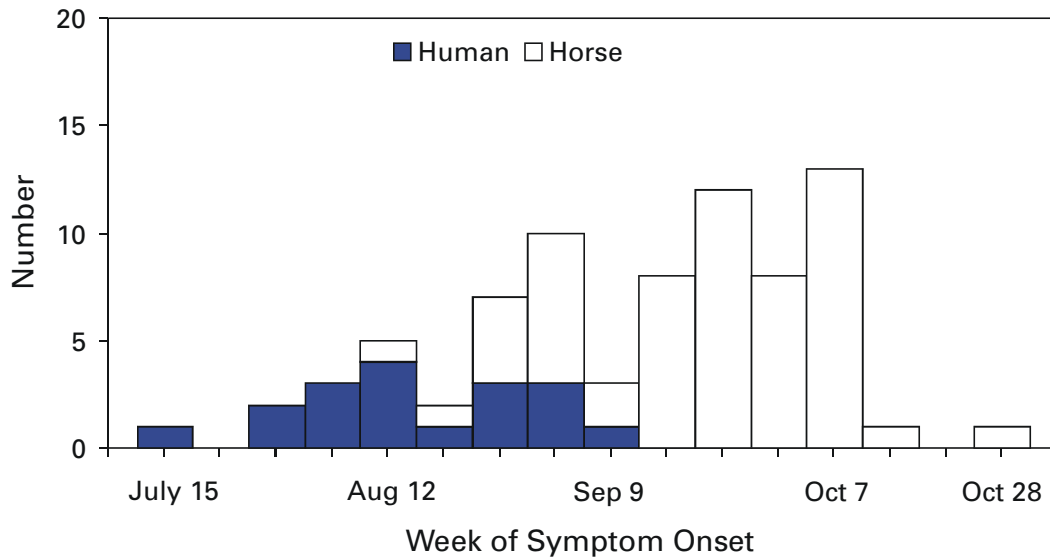
Continuing education credit will be offered for physicians, registered nurses, health educators, and cancer registrars based on 19.5 hours of instruction. The Call for Abstracts and Conference Registration Booklet is now available. Deadline for abstract submission is March 19, 2001. New this year is a Cyber Expo for showcasing innovative public health Internet sites and CD-ROM-based products. Registration information is available at <http://www.cdc.gov/cancer/conference2001>; deadline for registration is June 27, 2001.

Erratum: Vol. 49, No. 46

In the article, "Update: West Nile Virus Activity—Eastern United States, 2000," on page 1045, the number of West Nile virus-infected horses with neurologic disease from New York was incorrect. The correct number is 17. The total number of infected horses in the United States for 2000 with neurologic signs is 58, with the dates of illness ranging from August 17 to October 29 (Figure 1).

Notices to Readers — Continued

FIGURE 1. Number* of reported humans and horses with severe neurologic illness attributed to West Nile virus, by week of symptom onset — United States, 2000



*n=18 humans and 58 horses.

Erratum: Vol. 50, No. 4

In the article, "Injection Practices Among Nurses—Vâlcea, Romania, 1998," on page 61, the name of the first author in reference 1 was misspelled. The correct spelling is *Hersh BS*.

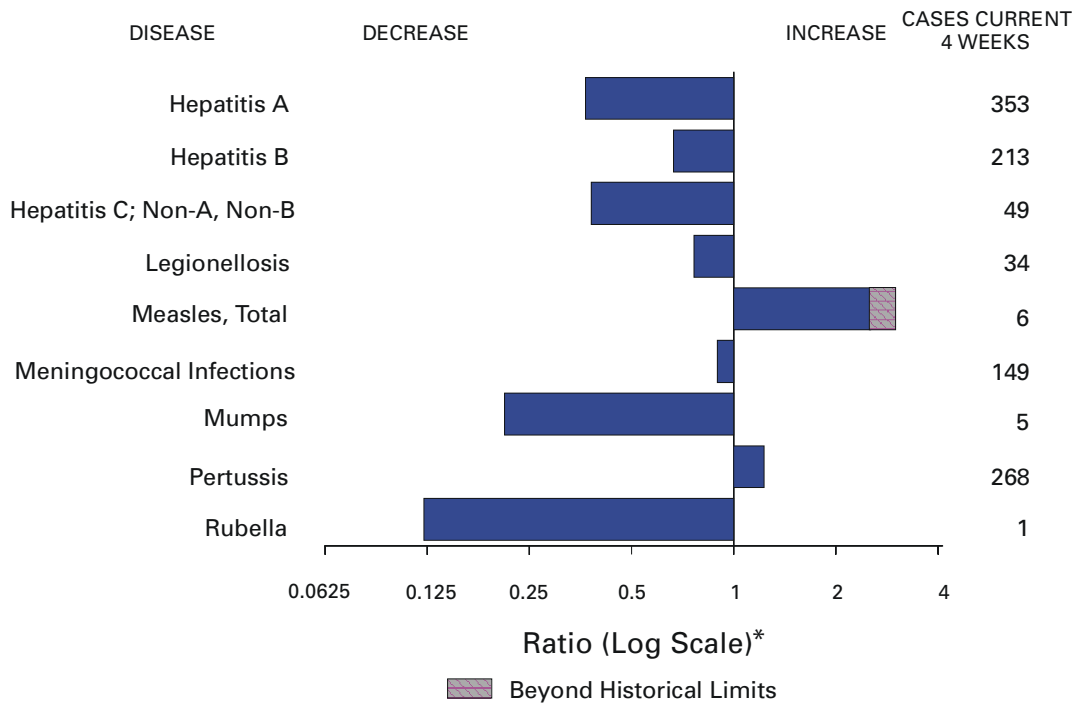
Addendum: Vol. 49, No. 50

In the article, "Multistate Outbreak of Listeriosis—United States, 2000," on page 1129, a credit was missing in the "Reported by" section: *D Schoonmaker-Bopp*, Wadsworth Center, New York Dept of Health.

Addendum: Vol. 50, No. 3

In the article, "Serosurveys for West Nile Virus Infection—New York and Connecticut Counties, 2000," on page 38, the following credits should be added to the "Reported by" section: *F Schwarz, MS, A Szlakowicz, MA, E Nadel, PhD*, Suffolk County Dept of Health Svcs; and *Public Health Prevention Svc Prevention Specialists, CDC*.

FIGURE I. Selected notifiable disease reports, United States, comparison of provisional 4-week totals ending February 10, 2001, with historical data



* Ratio of current 4-week total to mean of 15 4-week totals (from previous, comparable, and subsequent 4-week periods for the past 5 years). The point where the hatched area begins is based on the mean and two standard deviations of these 4-week totals.

TABLE I. Summary of provisional cases of selected notifiable diseases, United States, cumulative, week ending February 10, 2001 (6th Week)

| | Cum. 2001 | | Cum. 2001 |
|---|-----------|--|-----------|
| Anthrax | - | Poliomyelitis, paralytic | - |
| Brucellosis* | - | Psittacosis* | 2 |
| Cholera | - | Q fever* | 1 |
| Cyclosporiasis* | - | Rabies, human | - |
| Diphtheria | - | Rocky Mountain spotted fever (RMSF) | 6 |
| Ehrlichiosis: human granulocytic (HGE)* | 3 | Rubella, congenital syndrome | - |
| human monocytic (HME)* | 1 | Streptococcal disease, invasive, group A | 216 |
| Encephalitis: California serogroup viral* | - | Streptococcal toxic-shock syndrome* | 9 |
| eastern equine* | - | Syphilis, congenital† | - |
| St. Louis* | - | Tetanus | 1 |
| western equine* | - | Toxic-shock syndrome | 10 |
| Hansen disease (leprosy)* | - | Trichinosis | 2 |
| Hantavirus pulmonary syndrome*† | - | Tularemia* | 1 |
| Hemolytic uremic syndrome, postdiarrheal* | - | Typhoid fever | 9 |
| HIV infection, pediatric*§ | 10 | Yellow fever | - |
| Plague | - | | |

-: No reported cases.

*Not notifiable in all states.

† Updated weekly from reports to the Division of Viral and Rickettsial Diseases, National Center for Infectious Diseases (NCID).

§ Updated monthly from reports to the Division of HIV/AIDS Prevention — Surveillance and Epidemiology, National Center for HIV, STD, and TB Prevention (NCHSTP). Last update January 30, 2001.

¶ Updated from reports to the Division of STD Prevention, NCHSTP.

TABLE II. Provisional cases of selected notifiable diseases, United States, weeks ending February 10, 2001, and February 12, 2000 (6th Week)

| Reporting Area | AIDS | | Chlamydia [†] | | Cryptosporidiosis | | <i>Escherichia coli</i> O157:H7* | | | |
|----------------|------------------------|-----------|------------------------|-----------|-------------------|-----------|----------------------------------|-----------|-----------|-----------|
| | Cum. 2001 [§] | Cum. 2000 | Cum. 2001 | Cum. 2000 | Cum. 2001 | Cum. 2000 | NETSS | | PHLIS | |
| | | | | | | | Cum. 2001 | Cum. 2000 | Cum. 2001 | Cum. 2000 |
| UNITED STATES | 2,792 | 2,720 | 52,163 | 70,192 | 82 | 102 | 76 | 157 | 44 | 125 |
| NEW ENGLAND | 91 | 283 | 1,721 | 2,627 | 5 | 3 | 10 | 12 | 3 | 15 |
| Maine | 3 | 3 | - | 157 | - | 1 | - | 1 | - | 1 |
| N.H. | 5 | 4 | 102 | 119 | - | - | 3 | 3 | 1 | 3 |
| Vt. | 5 | - | 79 | 64 | 2 | 1 | - | 1 | - | 2 |
| Mass. | 51 | 228 | 1,045 | 1,117 | - | 1 | 7 | 3 | 2 | 3 |
| R.I. | 11 | 6 | 369 | 279 | 1 | - | - | - | - | - |
| Conn. | 16 | 42 | 126 | 891 | 2 | - | - | 4 | - | 6 |
| MID. ATLANTIC | 555 | 796 | 2,000 | 6,605 | 5 | 9 | 9 | 23 | 4 | 34 |
| Upstate N.Y. | 4 | 21 | N | N | 3 | 4 | 9 | 21 | 4 | 28 |
| N.Y. City | 360 | 495 | 633 | 2,765 | 2 | 4 | - | 1 | - | - |
| N.J. | 157 | 195 | 225 | 1,450 | - | - | - | 1 | - | 2 |
| Pa. | 34 | 85 | 1,142 | 2,390 | - | 1 | N | N | - | 4 |
| E.N. CENTRAL | 224 | 141 | 7,801 | 13,064 | 26 | 26 | 16 | 26 | 11 | 5 |
| Ohio | 46 | 24 | 200 | 3,582 | 12 | 5 | 10 | 4 | 6 | 2 |
| Ind. | 26 | 26 | 1,428 | 1,419 | 7 | 3 | 3 | 1 | - | 1 |
| Ill. | 121 | 63 | 1,993 | 3,902 | - | 4 | 3 | 11 | 3 | - |
| Mich. | 23 | 19 | 3,327 | 2,329 | 7 | 3 | - | 6 | - | 1 |
| Wis. | 8 | 9 | 853 | 1,832 | - | 11 | - | 4 | 2 | 1 |
| W.N. CENTRAL | 44 | 47 | 2,165 | 4,135 | 3 | 1 | 11 | 30 | 7 | 26 |
| Minn. | 12 | 11 | 562 | 953 | - | - | 3 | 3 | 2 | 11 |
| Iowa | 9 | 7 | 202 | 189 | 1 | - | - | 3 | - | 3 |
| Mo. | 7 | 15 | 352 | 1,613 | - | - | 6 | 19 | 2 | 7 |
| N. Dak. | - | - | - | 95 | - | 1 | - | 1 | - | 1 |
| S. Dak. | - | 1 | 226 | 174 | - | - | 1 | - | 1 | - |
| Nebr. | 6 | 4 | 124 | 372 | 2 | - | - | 2 | - | 3 |
| Kans. | 10 | 9 | 699 | 739 | - | - | 1 | 2 | 2 | 1 |
| S. ATLANTIC | 734 | 578 | 10,677 | 12,621 | 13 | 10 | 9 | 14 | 2 | 14 |
| Del. | 15 | 15 | 331 | 338 | - | - | - | - | - | - |
| Md. | 41 | 92 | 1,282 | 1,182 | 2 | 1 | - | 4 | - | 1 |
| D.C. | 62 | 23 | 307 | 278 | 1 | - | - | - | U | U |
| Va. | 48 | 41 | 1,498 | 1,301 | 2 | - | 1 | 3 | 1 | 4 |
| W. Va. | 6 | 4 | 198 | 222 | - | - | - | 1 | - | 1 |
| N.C. | 57 | 27 | 1,654 | 1,627 | 2 | 2 | 6 | 4 | 1 | 1 |
| S.C. | 61 | 34 | 1,065 | 2,065 | - | - | 1 | - | - | - |
| Ga. | 104 | 97 | 1,561 | 2,827 | - | 3 | - | 1 | - | 3 |
| Fla. | 340 | 245 | 2,781 | 2,781 | 6 | 4 | 1 | 1 | - | 4 |
| E.S. CENTRAL | 148 | 140 | 5,026 | 4,049 | 3 | 4 | 3 | 5 | 3 | 3 |
| Ky. | 18 | 20 | 948 | 826 | - | - | - | 2 | 2 | - |
| Tenn. | 80 | 35 | 1,744 | 1,409 | - | - | 2 | 2 | 1 | 3 |
| Ala. | 25 | 50 | 1,213 | 1,099 | 2 | 4 | 1 | 1 | - | - |
| Miss. | 25 | 35 | 1,121 | 715 | 1 | - | - | - | - | - |
| W.S. CENTRAL | 409 | 267 | 10,474 | 11,351 | 2 | 5 | 2 | 9 | 8 | 13 |
| Ark. | 19 | 8 | 1,069 | 416 | 1 | 1 | - | 2 | - | 1 |
| La. | 130 | 44 | 2,001 | 1,847 | - | - | - | - | 5 | 5 |
| Okla. | 20 | 10 | 1,231 | 1,039 | 1 | - | 2 | 3 | 2 | 3 |
| Tex. | 240 | 205 | 6,173 | 8,049 | - | 4 | - | 4 | 1 | 4 |
| MOUNTAIN | 145 | 100 | 2,641 | 4,058 | 6 | 7 | 5 | 18 | 5 | 6 |
| Mont. | 1 | 1 | 42 | 110 | - | - | - | 5 | - | - |
| Idaho | - | 3 | 206 | 228 | 1 | 1 | 2 | 1 | - | - |
| Wyo. | - | 1 | 69 | 81 | - | - | - | 2 | - | 2 |
| Colo. | 38 | 33 | 160 | 1,011 | - | 2 | 1 | 6 | 2 | 1 |
| N. Mex. | 7 | 8 | 580 | 513 | 3 | - | - | - | - | - |
| Ariz. | 52 | 21 | 1,146 | 1,330 | 1 | 2 | 2 | 2 | 2 | 2 |
| Utah | 11 | 12 | 67 | 320 | 1 | 2 | - | 1 | 1 | 1 |
| Nev. | 36 | 21 | 371 | 465 | - | - | - | 1 | - | - |
| PACIFIC | 442 | 368 | 9,658 | 11,682 | 19 | 37 | 11 | 20 | 1 | 9 |
| Wash. | 26 | 46 | 1,600 | 1,523 | N | U | 2 | 1 | - | 3 |
| Oreg. | 17 | 11 | 592 | 374 | 5 | 1 | 2 | 3 | 1 | 3 |
| Calif. | 398 | 302 | 6,930 | 9,128 | 14 | 36 | 7 | 12 | - | - |
| Alaska | 1 | - | 200 | 248 | - | - | - | - | - | - |
| Hawaii | - | 9 | 336 | 409 | - | - | - | 4 | - | 3 |
| Guam | 2 | - | - | - | - | - | N | N | U | U |
| P.R. | 48 | 75 | 382 | U | U | U | U | U | U | U |
| V.I. | 1 | - | U | U | U | U | U | U | U | U |
| Amer. Samoa | - | - | U | U | U | U | U | U | U | U |
| C.N.M.I. | - | - | U | U | U | U | U | U | U | U |

N: Not notifiable. U: Unavailable. -: No reported cases. C.N.M.I.: Commonwealth of Northern Mariana Islands.

* Individual cases can be reported through both the National Electronic Telecommunications System for Surveillance (NETSS) and the Public Health Laboratory Information System (PHLIS).

[†] Chlamydia refers to genital infections caused by *C. trachomatis*. Totals reported to the Division of STD Prevention, NCHSTP.

[§] Updated monthly from reports to the Division of HIV/AIDS Prevention — Surveillance and Epidemiology, National Center for HIV, STD, and TB Prevention. Last update January 30, 2001.

TABLE II. (Cont'd) Provisional cases of selected notifiable diseases, United States, weeks ending February 10, 2001, and February 12, 2000 (6th Week)

| Reporting Area | Gonorrhea | | Hepatitis C; Non-A, Non-B | | Legionellosis | | Listeriosis | Lyme Disease | |
|----------------|---------------------------|--------------|------------------------------|--------------|---------------|--------------|--------------|--------------|--------------|
| | Cum. 2001 ^s | Cum. 2000 | Cum. 2001 | Cum. 2000 | Cum. 2001 | Cum. 2000 | Cum. 2001 | Cum. 2001 | Cum. 2000 |
| UNITED STATES | 26,141 | 37,807 | 98 | 413 | 45 | 67 | 21 | 174 | 333 |
| NEW ENGLAND | 495 | 848 | 1 | 1 | 1 | 5 | 4 | 41 | 36 |
| Maine | - | 8 | - | - | - | 2 | - | - | - |
| N.H. | 11 | 12 | - | - | - | - | - | 37 | 11 |
| Vt. | 14 | 1 | 1 | - | 1 | - | - | - | - |
| Mass. | 331 | 334 | - | 1 | - | 3 | 3 | 1 | 11 |
| R.I. | 95 | 68 | - | - | - | - | - | - | - |
| Conn. | 44 | 425 | - | - | - | - | 1 | 3 | 14 |
| MID. ATLANTIC | 1,428 | 3,555 | 6 | 65 | 1 | 4 | 1 | 85 | 234 |
| Upstate N.Y. | 443 | 275 | 3 | - | 1 | 2 | 1 | 63 | 56 |
| N.Y. City | 313 | 1,150 | - | - | - | - | - | - | 11 |
| N.J. | 140 | 825 | - | 60 | - | - | - | - | 40 |
| Pa. | 532 | 1,305 | 3 | 5 | - | 2 | - | 22 | 127 |
| E.N. CENTRAL | 4,081 | 8,032 | 17 | 37 | 24 | 25 | 4 | 8 | 5 |
| Ohio | 137 | 2,101 | 1 | - | 13 | 11 | 1 | 8 | 1 |
| Ind. | 660 | 680 | - | - | 3 | 2 | - | - | - |
| Ill. | 893 | 2,791 | - | 5 | - | 2 | - | - | 1 |
| Mich. | 2,048 | 1,628 | 16 | 32 | 8 | 5 | 3 | - | - |
| Wis. | 343 | 832 | - | - | - | 5 | - | U | 3 |
| W.N. CENTRAL | 885 | 1,766 | 30 | 50 | 5 | 3 | 1 | 3 | 7 |
| Minn. | 191 | 366 | - | - | - | 1 | - | 3 | 1 |
| Iowa | 64 | 56 | - | - | - | 1 | - | - | - |
| Mo. | 246 | 873 | 29 | 49 | 3 | 1 | - | - | 2 |
| N. Dak. | - | 3 | - | - | - | - | - | - | - |
| S. Dak. | 27 | 21 | - | - | - | - | - | - | - |
| Nebr. | 31 | 125 | - | - | 1 | - | - | - | - |
| Kans. | 326 | 322 | 1 | 1 | 1 | - | 1 | - | 4 |
| S. ATLANTIC | 7,344 | 10,633 | 6 | 5 | 5 | 17 | 3 | 27 | 40 |
| Del. | 174 | 184 | - | - | - | 1 | - | - | 5 |
| Md. | 772 | 832 | 3 | 1 | 4 | 7 | 1 | 24 | 30 |
| D.C. | 310 | 288 | - | - | - | - | - | 1 | - |
| Va. | 941 | 1,120 | - | - | 1 | 2 | 1 | 1 | - |
| W. Va. | 35 | 69 | - | - | N | N | - | - | 2 |
| N.C. | 1,439 | 1,332 | 1 | 3 | - | 1 | - | 1 | 3 |
| S.C. | 1,209 | 2,767 | - | - | - | 2 | - | - | - |
| Ga. | 808 | 1,860 | - | - | - | - | 1 | - | - |
| Fla. | 1,656 | 2,181 | 2 | 1 | - | 4 | - | - | - |
| E. S. CENTRAL | 3,483 | 3,146 | 20 | 65 | 3 | 1 | 4 | 2 | - |
| Ky. | 410 | 379 | - | 4 | 2 | - | 1 | 2 | - |
| Tenn. | 1,233 | 1,164 | 5 | 12 | - | - | 2 | - | - |
| Ala. | 1,060 | 927 | - | 3 | 1 | 1 | 1 | - | - |
| Miss. | 780 | 676 | 15 | 46 | - | - | - | - | - |
| W.S. CENTRAL | 5,586 | 6,249 | 2 | 132 | 1 | 4 | - | - | 2 |
| Ark. | 770 | 255 | 1 | - | - | - | - | - | - |
| La. | 1,442 | 1,487 | 1 | 71 | 1 | 2 | - | - | 2 |
| Okla. | 603 | 504 | - | - | - | - | - | - | - |
| Tex. | 2,771 | 4,003 | - | 61 | - | 2 | - | - | - |
| MOUNTAIN | 794 | 1,151 | 6 | 31 | - | 4 | - | - | - |
| Mont. | 2 | - | - | - | - | - | - | - | - |
| Idaho | 13 | 15 | - | - | - | 1 | - | - | - |
| Wyo. | 9 | 5 | 2 | 20 | - | - | - | - | - |
| Colo. | 200 | 431 | 1 | 5 | - | 2 | - | - | - |
| N. Mex. | 116 | 92 | 3 | 3 | - | - | - | - | - |
| Ariz. | 322 | 388 | - | 3 | - | - | - | - | - |
| Utah | 9 | 49 | - | - | - | 1 | - | - | - |
| Nev. | 123 | 171 | - | - | - | - | - | - | - |
| PACIFIC | 2,045 | 2,427 | 10 | 27 | 5 | 4 | 4 | 8 | 9 |
| Wash. | 379 | 295 | - | 2 | 1 | 1 | - | - | - |
| Oreg. | 114 | 47 | 2 | 7 | N | N | 1 | 1 | 1 |
| Calif. | 1,474 | 2,006 | 8 | 18 | 4 | 3 | 3 | 7 | 8 |
| Alaska | 23 | 24 | - | - | - | - | - | - | - |
| Hawaii | 55 | 55 | - | - | - | - | - | N | N |
| Guam | - | - | - | - | - | - | - | - | - |
| P.R. | 87 | 59 | - | 1 | 2 | - | - | N | N |
| V.I. | U | U | U | U | U | U | - | U | U |
| Amer. Samoa | U | U | U | U | U | U | - | U | U |
| C.N.M.I. | U | U | U | U | U | U | - | U | U |

N: Not notifiable.

U: Unavailable.

-: No reported cases.

TABLE II. (Cont'd) Provisional cases of selected notifiable diseases, United States, weeks ending February 10, 2001, and February 12, 2000 (6th Week)

| Reporting Area | Malaria | | Rabies, Animal | | Salmonellosis* | | | |
|----------------|--------------|--------------|----------------|--------------|----------------|--------------|--------------|--------------|
| | Cum. 2001 | Cum. 2000 | Cum. 2001 | Cum. 2000 | NETSS | | PHLIS | |
| | | | | | Cum. 2001 | Cum. 2000 | Cum. 2001 | Cum. 2000 |
| UNITED STATES | 73 | 89 | 331 | 427 | 1,580 | 2,596 | 1,254 | 2,398 |
| NEW ENGLAND | 8 | 2 | 51 | 48 | 154 | 155 | 70 | 178 |
| Maine | - | - | 10 | 11 | 8 | 9 | 5 | 9 |
| N.H. | - | - | 1 | 1 | 12 | 10 | 7 | 8 |
| Vt. | - | - | 9 | 3 | 8 | 3 | 7 | 3 |
| Mass. | 2 | 2 | 13 | 20 | 93 | 107 | 15 | 110 |
| R.I. | - | - | 7 | 2 | 9 | 3 | 11 | 13 |
| Conn. | 6 | - | 11 | 11 | 24 | 23 | 25 | 35 |
| MID. ATLANTIC | 3 | 14 | 65 | 66 | 116 | 360 | 176 | 414 |
| Upstate N.Y. | 1 | 5 | 52 | 52 | 52 | 43 | 31 | 93 |
| N.Y. City | 2 | 6 | U | U | 45 | 110 | 96 | 124 |
| N.J. | - | 2 | 13 | 6 | - | 145 | 15 | 77 |
| Pa. | - | 1 | - | 8 | 19 | 62 | 34 | 120 |
| E.N. CENTRAL | 21 | 11 | 3 | 5 | 242 | 380 | 268 | 196 |
| Ohio | 4 | 2 | - | 1 | 104 | 94 | 73 | 73 |
| Ind. | 6 | - | 1 | - | 21 | 25 | 19 | 39 |
| Ill. | - | 5 | - | - | 64 | 130 | 100 | - |
| Mich. | 11 | 4 | 2 | - | 53 | 55 | 50 | 57 |
| Wis. | - | - | - | 4 | - | 76 | 26 | 27 |
| W.N. CENTRAL | 1 | 6 | 33 | 43 | 124 | 123 | 88 | 124 |
| Minn. | - | 2 | 11 | 15 | 29 | 19 | 39 | 40 |
| Iowa | - | - | 10 | 4 | 14 | 11 | 1 | 10 |
| Mo. | 1 | 1 | 2 | 2 | 42 | 44 | 36 | 34 |
| N. Dak. | - | - | - | 2 | - | 2 | 1 | 4 |
| S. Dak. | - | - | 6 | 12 | 13 | 6 | 4 | 8 |
| Nebr. | - | - | - | - | 9 | 16 | - | 12 |
| Kans. | - | 3 | 4 | 8 | 17 | 25 | 7 | 16 |
| S. ATLANTIC | 20 | 24 | 128 | 142 | 416 | 397 | 250 | 387 |
| Del. | 1 | - | - | 6 | 11 | 8 | 5 | 9 |
| Md. | 9 | 15 | 31 | 30 | 64 | 81 | 50 | 60 |
| D.C. | 2 | - | - | - | 11 | - | U | U |
| Va. | 6 | 7 | 33 | 40 | 56 | 39 | 18 | 46 |
| W. Va. | - | - | 8 | 11 | 1 | 14 | 9 | 9 |
| N.C. | 1 | 2 | 35 | 39 | 107 | 93 | 45 | 67 |
| S.C. | - | - | 7 | 9 | 49 | 46 | 19 | 37 |
| Ga. | - | - | - | - | 28 | 49 | 104 | 125 |
| Fla. | 1 | - | 14 | 7 | 89 | 67 | - | 34 |
| E.S. CENTRAL | 1 | 4 | 1 | 17 | 150 | 145 | 39 | 104 |
| Ky. | - | 1 | - | 2 | 31 | 22 | 17 | 17 |
| Tenn. | 1 | - | 1 | 12 | 28 | 30 | 19 | 51 |
| Ala. | - | 3 | - | 3 | 71 | 52 | - | 29 |
| Miss. | - | - | - | - | 20 | 41 | 3 | 7 |
| W.S. CENTRAL | 1 | 1 | 9 | 73 | 34 | 229 | 131 | 271 |
| Ark. | - | - | - | - | 23 | 17 | 13 | 19 |
| La. | 1 | 1 | - | - | 4 | 35 | 39 | 51 |
| Okla. | - | - | 9 | 7 | 7 | 17 | 8 | 20 |
| Tex. | - | - | - | 66 | - | 160 | 71 | 181 |
| MOUNTAIN | 2 | 6 | 14 | 15 | 93 | 231 | 92 | 187 |
| Mont. | 1 | - | 4 | 6 | 7 | 11 | - | - |
| Idaho | 1 | - | - | - | 5 | 18 | 4 | 11 |
| Wyo. | - | - | - | 7 | 3 | 3 | 1 | 1 |
| Colo. | - | 2 | - | - | 1 | 47 | 30 | 38 |
| N. Mex. | - | - | - | - | 23 | 21 | 10 | 23 |
| Ariz. | - | 2 | 10 | 2 | 31 | 70 | 30 | 75 |
| Utah | - | 2 | - | - | 12 | 42 | 17 | 39 |
| Nev. | - | - | - | - | 11 | 19 | - | - |
| PACIFIC | 16 | 21 | 27 | 18 | 251 | 576 | 140 | 537 |
| Wash. | - | - | - | - | 13 | 9 | - | 65 |
| Oreg. | 4 | 3 | - | - | 29 | 38 | 21 | 47 |
| Calif. | 11 | 17 | 12 | 16 | 205 | 489 | 85 | 392 |
| Alaska | 1 | - | 15 | 2 | 4 | 8 | - | 9 |
| Hawaii | - | 1 | - | - | - | 32 | 34 | 24 |
| Guam | - | - | - | - | - | - | U | U |
| P.R. | - | 2 | 7 | 6 | 5 | 24 | U | U |
| V.I. | U | U | U | U | U | U | U | U |
| Amer. Samoa | U | U | U | U | U | U | U | U |
| C.N.M.I. | U | U | U | U | U | U | U | U |

N: Not notifiable. U: Unavailable. -: No reported cases.

* Individual cases can be reported through both the National Electronic Telecommunications System for Surveillance (NETSS) and the Public Health Laboratory Information System (PHLIS).

TABLE II. (Cont'd) Provisional cases of selected notifiable diseases, United States, weeks ending February 10, 2001, and February 12, 2000 (6th Week)

| Reporting Area | Shigellosis* | | | | Syphilis (Primary & Secondary) | | Tuberculosis | |
|----------------|--------------|--------------|--------------|--------------|-----------------------------------|--------------|--------------|--------------|
| | NETSS | | PHLIS | | Cum. 2001 | Cum. 2000 | Cum. 2001 | Cum. 2000 |
| | Cum. 2001 | Cum. 2000 | Cum. 2001 | Cum. 2000 | | | | |
| UNITED STATES | 805 | 1,464 | 481 | 886 | 455 | 676 | 409 | 851 |
| NEW ENGLAND | 15 | 45 | 6 | 29 | 4 | 7 | 18 | 20 |
| Maine | - | 2 | - | - | - | - | - | - |
| N.H. | - | 1 | - | - | - | - | - | - |
| Vt. | - | - | - | - | - | - | - | - |
| Mass. | 12 | 35 | 1 | 20 | 3 | 5 | 13 | 9 |
| R.I. | - | 2 | - | 4 | - | 1 | - | 2 |
| Conn. | 3 | 5 | 5 | 5 | 1 | 1 | 5 | 9 |
| MID. ATLANTIC | 82 | 85 | 59 | 85 | 21 | 26 | 48 | 104 |
| Upstate N.Y. | 52 | 14 | 2 | 12 | 1 | - | - | 7 |
| N.Y. City | 22 | 35 | 39 | 28 | 13 | 15 | - | 61 |
| N.J. | - | 29 | 2 | 19 | 4 | 6 | 32 | 29 |
| Pa. | 8 | 7 | 16 | 26 | 3 | 5 | 16 | 7 |
| E.N. CENTRAL | 158 | 274 | 93 | 91 | 48 | 147 | 70 | 82 |
| Ohio | 52 | 14 | 20 | 3 | 2 | 11 | 12 | 13 |
| Ind. | 26 | 17 | 5 | 8 | 12 | 50 | 10 | 2 |
| Ill. | 38 | 118 | 48 | - | 8 | 52 | 40 | 64 |
| Mich. | 42 | 102 | 18 | 78 | 25 | 23 | - | - |
| Wis. | - | 23 | 2 | 2 | 1 | 11 | 8 | 3 |
| W.N. CENTRAL | 146 | 61 | 108 | 62 | - | 15 | 20 | 28 |
| Minn. | 64 | 11 | 74 | 29 | - | 3 | 13 | 14 |
| Iowa | 16 | 11 | - | 12 | - | - | - | - |
| Mo. | 42 | 31 | 29 | 14 | - | 10 | 5 | 11 |
| N. Dak. | - | - | 1 | - | - | - | - | - |
| S. Dak. | 1 | 1 | - | - | - | - | 1 | - |
| Nebr. | 8 | 4 | - | 4 | - | 1 | 1 | 1 |
| Kans. | 15 | 3 | 4 | 3 | - | 1 | - | 2 |
| S. ATLANTIC | 109 | 93 | 46 | 41 | 163 | 210 | 67 | 99 |
| Del. | 1 | - | - | - | - | 1 | - | - |
| Md. | 14 | 10 | 2 | 3 | 20 | 38 | 7 | 8 |
| D.C. | 5 | - | U | U | 3 | 12 | 9 | - |
| Va. | 10 | 9 | 3 | 10 | 12 | 17 | - | - |
| W. Va. | 1 | - | 4 | - | - | - | 4 | 5 |
| N.C. | 32 | 8 | 19 | 5 | 50 | 60 | 7 | 9 |
| S.C. | 12 | 3 | 7 | 1 | 26 | 15 | 8 | 18 |
| Ga. | 3 | 5 | 10 | 16 | 13 | 24 | 32 | 33 |
| Fla. | 31 | 58 | 1 | 6 | 39 | 43 | - | 26 |
| E.S. CENTRAL | 82 | 76 | 23 | 39 | 100 | 88 | 28 | 59 |
| Ky. | 38 | 14 | 12 | 6 | 5 | 3 | - | 4 |
| Tenn. | 6 | 31 | 9 | 30 | 27 | 62 | - | 19 |
| Ala. | 21 | 5 | - | 1 | 18 | 15 | 24 | 27 |
| Miss. | 17 | 26 | 2 | 2 | 50 | 8 | 4 | 9 |
| W.S. CENTRAL | 24 | 249 | 91 | 266 | 72 | 106 | 13 | 180 |
| Ark. | 18 | 18 | 10 | 3 | 8 | 3 | 13 | 8 |
| La. | 3 | 39 | 19 | 18 | 14 | 19 | - | 1 |
| Okla. | 2 | 4 | - | 4 | 10 | 32 | - | 5 |
| Tex. | 1 | 188 | 62 | 241 | 40 | 52 | - | 166 |
| MOUNTAIN | 53 | 156 | 41 | 58 | 19 | 20 | 8 | 44 |
| Mont. | - | - | - | - | - | - | - | - |
| Idaho | 2 | 15 | - | 12 | - | - | - | - |
| Wyo. | - | - | - | - | - | - | - | - |
| Colo. | 2 | 25 | 10 | 12 | 1 | - | 5 | 4 |
| N. Mex. | 18 | 17 | 7 | 12 | 1 | - | 1 | 4 |
| Ariz. | 25 | 60 | 21 | 17 | 12 | 18 | 2 | 12 |
| Utah | 1 | 5 | 3 | 5 | 4 | - | - | 4 |
| Nev. | 5 | 34 | - | - | 1 | 2 | - | 20 |
| PACIFIC | 136 | 425 | 14 | 215 | 28 | 57 | 137 | 235 |
| Wash. | 19 | 57 | - | 170 | 12 | 4 | 18 | 16 |
| Oreg. | 14 | 67 | 14 | 40 | 2 | - | - | 1 |
| Calif. | 103 | 292 | - | - | 12 | 53 | 113 | 209 |
| Alaska | - | 2 | - | 1 | - | - | 6 | 1 |
| Hawaii | - | 7 | - | 4 | 2 | - | - | 8 |
| Guam | - | - | U | U | - | - | - | - |
| P.R. | - | 3 | U | U | 27 | 23 | - | - |
| V.I. | U | U | U | U | U | U | U | U |
| Amer. Samoa | U | U | U | U | U | U | U | U |
| C.N.M.I. | U | U | U | U | U | U | U | U |

N: Not notifiable. U: Unavailable. -: No reported cases.

*Individual cases can be reported through both the National Electronic Telecommunications System for Surveillance (NETSS) and the Public Health Laboratory Information System (PHLIS).

TABLE III. Provisional cases of selected notifiable diseases preventable by vaccination, United States, weeks ending February 10, 2001, and February 12, 2000 (6th Week)

| Reporting Area | <i>H. influenzae</i> , Invasive | | Hepatitis (Viral), By Type | | | | Measles (Rubeola) | | | | | |
|----------------|---------------------------------|-----------|----------------------------|-----------|-----------|-----------|-------------------|-----------|-----------|-----------|-----------|-----------|
| | Cum. 2001 [†] | Cum. 2000 | A | | B | | Indigenous | | Imported* | | Total | |
| | | | Cum. 2001 | Cum. 2000 | Cum. 2001 | Cum. 2000 | 2001 | Cum. 2001 | 2001 | Cum. 2001 | Cum. 2001 | Cum. 2000 |
| UNITED STATES | 103 | 146 | 587 | 1,426 | 356 | 609 | 1 | 5 | - | 2 | 7 | 4 |
| NEW ENGLAND | 4 | 13 | 33 | 34 | 4 | 14 | - | - | - | - | - | - |
| Maine | - | - | 1 | 1 | 1 | 1 | - | - | - | - | - | - |
| N.H. | - | 1 | 3 | 5 | 2 | 3 | - | - | - | - | - | - |
| Vt. | - | 2 | - | 1 | - | 2 | - | - | - | - | - | - |
| Mass. | 4 | 10 | 8 | 13 | 1 | 1 | - | - | - | - | - | - |
| R.I. | - | - | 2 | - | - | - | - | - | - | - | - | - |
| Conn. | - | - | 19 | 14 | - | 7 | - | - | - | - | - | - |
| MID. ATLANTIC | 15 | 21 | 33 | 86 | 31 | 102 | - | - | - | - | - | 1 |
| Upstate N.Y. | 5 | 10 | 15 | 26 | 5 | 6 | - | - | - | - | - | - |
| N.Y. City | 5 | 7 | 15 | 50 | 20 | 62 | - | - | - | - | - | 1 |
| N.J. | 4 | 3 | - | 3 | - | 6 | - | - | - | - | - | - |
| Pa. | 1 | 1 | 3 | 7 | 6 | 28 | - | - | - | - | - | - |
| E.N. CENTRAL | 13 | 22 | 96 | 231 | 68 | 70 | - | - | - | - | - | 1 |
| Ohio | 9 | 8 | 28 | 52 | 12 | 13 | - | - | - | - | - | - |
| Ind. | 3 | 2 | 2 | 4 | 2 | 1 | - | - | - | - | - | - |
| Ill. | - | 10 | 13 | 98 | 2 | 1 | - | - | - | - | - | - |
| Mich. | 1 | 2 | 53 | 65 | 52 | 54 | - | - | - | - | - | 1 |
| Wis. | - | - | - | 12 | - | 1 | - | - | - | - | - | - |
| W.N. CENTRAL | 2 | 3 | 53 | 141 | 21 | 38 | 1 | 1 | - | - | 1 | - |
| Minn. | - | - | 1 | 12 | - | - | - | - | - | - | - | - |
| Iowa | - | - | 3 | 10 | - | 7 | - | - | - | - | - | - |
| Mo. | 2 | 3 | 10 | 100 | 16 | 27 | - | - | - | - | - | - |
| N. Dak. | - | - | - | - | - | - | - | - | - | - | - | - |
| S. Dak. | - | - | - | - | 1 | - | - | - | - | - | - | - |
| Nebr. | - | - | 15 | 3 | 4 | 2 | - | - | - | - | - | - |
| Kans. | - | - | 24 | 16 | - | 2 | 1 | 1 | - | - | 1 | - |
| S. ATLANTIC | 34 | 37 | 92 | 84 | 60 | 69 | - | 2 | - | 1 | 3 | - |
| Del. | - | - | - | - | - | - | - | - | - | - | - | - |
| Md. | 7 | 19 | 32 | 19 | 11 | 20 | - | 2 | - | 1 | 3 | - |
| D.C. | - | - | 3 | - | 2 | - | - | - | - | - | - | - |
| Va. | 3 | 8 | 14 | 15 | 9 | 15 | - | - | - | - | - | - |
| W. Va. | 1 | 1 | - | 7 | - | - | U | - | U | - | - | - |
| N.C. | 6 | 3 | 5 | 21 | 26 | 21 | - | - | - | - | - | - |
| S.C. | 1 | 1 | 9 | 1 | - | 1 | - | - | - | - | - | - |
| Ga. | 7 | 4 | - | 4 | 1 | 12 | - | - | - | - | - | - |
| Fla. | 9 | 1 | 29 | 17 | 11 | 12 | - | - | - | - | - | - |
| E.S. CENTRAL | 1 | 4 | 25 | 71 | 24 | 53 | - | - | - | - | - | - |
| Ky. | - | 1 | 2 | 4 | 2 | 7 | - | - | - | - | - | - |
| Tenn. | - | 3 | 13 | 21 | 5 | 22 | - | - | - | - | - | - |
| Ala. | 1 | - | 10 | 9 | 9 | 3 | - | - | - | - | - | - |
| Miss. | - | - | - | 37 | 8 | 21 | - | - | - | - | - | - |
| W.S. CENTRAL | 1 | 12 | 37 | 281 | 19 | 71 | - | - | - | - | - | - |
| Ark. | - | - | 13 | 13 | 11 | 7 | - | - | - | - | - | - |
| La. | - | 4 | 5 | 12 | 1 | 25 | - | - | - | - | - | - |
| Okla. | 1 | 8 | 19 | 40 | 7 | 5 | - | - | - | - | - | - |
| Tex. | - | - | - | 216 | - | 34 | - | - | - | - | - | - |
| MOUNTAIN | 26 | 20 | 74 | 96 | 26 | 46 | - | - | - | 1 | 1 | - |
| Mont. | - | - | 2 | 1 | - | 1 | - | - | - | - | - | - |
| Idaho | - | 1 | - | 3 | - | 3 | - | - | - | 1 | 1 | - |
| Wyo. | - | - | 1 | - | - | - | - | - | - | - | - | - |
| Colo. | - | 5 | 1 | 28 | - | 14 | - | - | - | - | - | - |
| N. Mex. | 6 | 7 | 3 | 11 | 12 | 10 | - | - | - | - | - | - |
| Ariz. | 19 | 6 | 45 | 38 | 9 | 15 | - | - | - | - | - | - |
| Utah | - | 1 | 5 | 8 | - | 1 | - | - | - | - | - | - |
| Nev. | 1 | - | 17 | 7 | 5 | 2 | - | - | - | - | - | - |
| PACIFIC | 7 | 14 | 144 | 402 | 103 | 146 | - | 2 | - | - | 2 | 2 |
| Wash. | - | 2 | 3 | 3 | 3 | 1 | - | - | - | - | - | 1 |
| Oreg. | 6 | 2 | 15 | 27 | 16 | 13 | - | 2 | - | - | 2 | - |
| Calif. | - | 5 | 119 | 365 | 83 | 128 | - | - | - | - | - | 1 |
| Alaska | 1 | 1 | 7 | 3 | 1 | 2 | - | - | - | - | - | - |
| Hawaii | - | 4 | - | 4 | - | 2 | - | - | - | - | - | - |
| Guam | - | - | - | - | - | - | U | - | U | - | - | - |
| P.R. | - | - | - | 30 | 1 | 17 | U | - | U | - | - | - |
| V.I. | U | U | U | U | U | U | U | U | U | U | U | U |
| Amer. Samoa | U | U | U | U | U | U | U | U | U | U | U | U |
| C.N.M.I. | U | U | U | U | U | U | U | U | U | U | U | U |

N: Not notifiable. U: Unavailable. -: No reported cases.

*For imported measles, cases include only those resulting from importation from other countries.

[†] Of 19 cases among children aged <5 years, serotype was reported for 9 and of those, 0 were type b.

TABLE III. (Cont'd) Provisional cases of selected notifiable diseases preventable by vaccination, United States, weeks ending February 10, 2001, and February 12, 2000 (6th Week)

| Reporting Area | Meningococcal Disease | | Mumps | | | Pertussis | | | Rubella | | |
|----------------|-----------------------|-----------|-------|-----------|-----------|-----------|-----------|-----------|---------|-----------|-----------|
| | Cum. 2001 | Cum. 2000 | 2001 | Cum. 2001 | Cum. 2000 | 2001 | Cum. 2001 | Cum. 2000 | 2001 | Cum. 2001 | Cum. 2000 |
| UNITED STATES | 243 | 327 | 1 | 10 | 51 | 34 | 394 | 546 | - | 2 | 4 |
| NEW ENGLAND | 23 | 17 | - | - | - | 2 | 105 | 144 | - | - | 3 |
| Maine | - | 1 | - | - | - | - | - | 4 | - | - | - |
| N.H. | 2 | 1 | - | - | - | - | 4 | 20 | - | - | 1 |
| Vt. | - | 1 | - | - | - | 1 | 16 | 27 | - | - | - |
| Mass. | 15 | 9 | - | - | - | - | 83 | 92 | - | - | 2 |
| R.I. | - | 1 | - | - | - | - | - | - | - | - | - |
| Conn. | 6 | 4 | - | - | - | 1 | 2 | 1 | - | - | - |
| MID. ATLANTIC | 26 | 24 | - | - | 3 | 2 | 12 | 39 | - | - | 1 |
| Upstate N.Y. | 11 | 6 | - | - | 1 | 2 | 12 | 22 | - | - | - |
| N.Y. City | 4 | 8 | - | - | 1 | - | - | 15 | - | - | 1 |
| N.J. | 10 | 4 | - | - | - | - | - | - | - | - | - |
| Pa. | 1 | 6 | - | - | 1 | - | - | 2 | - | - | - |
| E.N. CENTRAL | 18 | 62 | 1 | 1 | 6 | 5 | 63 | 119 | - | 2 | - |
| Ohio | 12 | 9 | 1 | 1 | 3 | 5 | 56 | 89 | - | - | - |
| Ind. | - | 6 | - | - | - | - | 1 | 3 | - | - | - |
| Ill. | - | 21 | - | - | - | - | - | 3 | - | 1 | - |
| Mich. | 6 | 16 | - | - | 3 | - | 5 | 5 | - | 1 | - |
| Wis. | - | 10 | - | - | - | - | 1 | 19 | - | - | - |
| W.N. CENTRAL | 17 | 23 | - | 1 | 4 | - | 18 | 15 | - | - | - |
| Minn. | - | 1 | - | - | - | - | - | 4 | - | - | - |
| Iowa | 4 | 3 | - | - | 1 | - | 2 | 4 | - | - | - |
| Mo. | 8 | 16 | - | - | 1 | - | 7 | 2 | - | - | - |
| N. Dak. | - | 1 | - | - | - | - | - | - | - | - | - |
| S. Dak. | - | 1 | - | - | - | - | 2 | 1 | - | - | - |
| Nebr. | 2 | - | - | - | 2 | - | - | - | - | - | - |
| Kans. | 3 | 1 | - | 1 | - | - | 7 | 4 | - | - | - |
| S. ATLANTIC | 51 | 46 | - | 1 | 5 | 2 | 18 | 26 | - | - | - |
| Del. | - | - | - | - | - | - | - | - | - | - | - |
| Md. | 11 | 4 | - | 1 | 1 | - | 5 | 11 | - | - | - |
| D.C. | - | - | - | - | - | - | - | - | - | - | - |
| Va. | 5 | 9 | - | - | - | - | - | 1 | - | - | - |
| W. Va. | - | 1 | U | - | - | U | - | - | U | - | - |
| N.C. | 10 | 10 | - | - | - | - | 9 | 4 | - | - | - |
| S.C. | 4 | 6 | - | - | 3 | 1 | 4 | 9 | - | - | - |
| Ga. | 7 | 7 | - | - | - | - | - | - | - | - | - |
| Fla. | 14 | 9 | - | - | 1 | - | - | 1 | - | - | - |
| E.S. CENTRAL | 21 | 16 | - | - | 1 | 1 | 9 | 22 | - | - | - |
| Ky. | 3 | 3 | - | - | - | - | 1 | 17 | - | - | - |
| Tenn. | 7 | 7 | - | - | - | - | 6 | 1 | - | - | - |
| Ala. | 8 | 5 | - | - | 1 | 1 | 2 | 3 | - | - | - |
| Miss. | 3 | 1 | - | - | - | - | - | 1 | - | - | - |
| W.S. CENTRAL | 19 | 35 | - | - | 7 | 1 | 3 | 3 | - | - | - |
| Ark. | 5 | 1 | - | - | - | - | 2 | 1 | - | - | - |
| La. | 8 | 16 | - | - | - | - | - | 1 | - | - | - |
| Okla. | 6 | 4 | - | - | - | 1 | 1 | - | - | - | - |
| Tex. | - | 14 | - | - | 7 | - | - | 1 | - | - | - |
| MOUNTAIN | 14 | 17 | - | 1 | 2 | 19 | 158 | 114 | - | - | - |
| Mont. | - | - | - | - | - | - | - | - | - | - | - |
| Idaho | 3 | 2 | - | - | - | 11 | 18 | 15 | - | - | - |
| Wyo. | - | - | - | - | - | - | - | - | - | - | - |
| Colo. | - | 3 | - | - | - | - | - | 74 | - | - | - |
| N. Mex. | 4 | 2 | - | 1 | N | - | 4 | 15 | - | - | - |
| Ariz. | 3 | 6 | - | - | - | 8 | 133 | 5 | - | - | - |
| Utah | 2 | 3 | - | - | - | - | 3 | 3 | - | - | - |
| Nev. | 2 | 1 | - | - | 2 | - | - | 2 | - | - | - |
| PACIFIC | 54 | 87 | - | 6 | 23 | 2 | 8 | 64 | - | - | - |
| Wash. | 5 | 4 | - | - | - | 2 | 5 | 1 | - | - | - |
| Oreg. | 10 | 13 | N | N | N | - | 3 | 8 | - | - | - |
| Calif. | 39 | 67 | - | 6 | 22 | - | - | 51 | - | - | - |
| Alaska | - | - | - | - | - | - | - | 2 | - | - | - |
| Hawaii | - | 3 | - | - | 1 | - | - | 2 | - | - | - |
| Guam | - | - | U | - | - | U | - | - | U | - | - |
| P.R. | - | 2 | U | - | - | U | - | - | U | - | - |
| V.I. | U | U | U | U | U | U | U | U | U | U | U |
| Amer. Samoa | U | U | U | U | U | U | U | U | U | U | U |
| C.N.M.I. | U | U | U | U | U | U | U | U | U | U | U |

N: Not notifiable.

U: Unavailable.

- : No reported cases.

TABLE IV. Deaths in 122 U.S. cities,* week ending
February 10, 2001 (6th Week)

| Reporting Area | All Causes, By Age (Years) | | | | | | P&I [†] Total | Reporting Area | All Causes, By Age (Years) | | | | | | P&I [†] Total |
|---------------------|----------------------------|-------|-------|-------|------|----|---------------------------|-----------------------|----------------------------|-------|-------|-------|------|-----|---------------------------|
| | All Ages | ≥65 | 45-64 | 25-44 | 1-24 | <1 | | | All Ages | ≥65 | 45-64 | 25-44 | 1-24 | <1 | |
| NEW ENGLAND | 680 | 509 | 114 | 28 | 16 | 13 | 68 | S. ATLANTIC | 1,424 | 937 | 280 | 137 | 40 | 29 | 95 |
| Boston, Mass. | 169 | 126 | 25 | 5 | 5 | 8 | 14 | Atlanta, Ga. | 190 | 115 | 39 | 24 | 6 | 6 | 5 |
| Bridgeport, Conn. | 38 | 29 | 7 | 1 | 1 | - | 4 | Baltimore, Md. | 226 | 137 | 50 | 29 | 10 | - | 24 |
| Cambridge, Mass. | 17 | 14 | 2 | - | 1 | - | 1 | Charlotte, N.C. | 119 | 83 | 21 | 7 | 3 | 5 | 7 |
| Fall River, Mass. | 30 | 25 | 4 | - | 1 | - | - | Jacksonville, Fla. | 144 | 87 | 29 | 19 | 5 | 4 | 11 |
| Hartford, Conn. | 74 | 46 | 18 | 5 | 2 | 3 | 5 | Miami, Fla. | U | U | U | U | U | U | U |
| Lowell, Mass. | 35 | 28 | 6 | 1 | - | - | 5 | Norfolk, Va. | 62 | 48 | 7 | 3 | 2 | 2 | 4 |
| Lynn, Mass. | 16 | 12 | 2 | 2 | - | - | 1 | Richmond, Va. | 65 | 41 | 15 | 7 | 1 | 1 | 6 |
| New Bedford, Mass. | 28 | 22 | 6 | - | - | - | 3 | Savannah, Ga. | 71 | 45 | 16 | 7 | 2 | 1 | 2 |
| New Haven, Conn. | 39 | 28 | 6 | 3 | 1 | 1 | 6 | St. Petersburg, Fla. | 75 | 52 | 10 | 10 | 2 | 1 | 7 |
| Providence, R.I. | 56 | 42 | 8 | 3 | 2 | 1 | - | Tampa, Fla. | 245 | 180 | 45 | 12 | 4 | 4 | 25 |
| Somerville, Mass. | 12 | 9 | 3 | - | - | - | 1 | Washington, D.C. | 200 | 122 | 48 | 19 | 5 | 5 | 4 |
| Springfield, Mass. | 48 | 29 | 13 | 4 | 2 | - | 8 | Wilmington, Del. | 27 | 27 | - | - | - | - | - |
| Waterbury, Conn. | 48 | 37 | 8 | 3 | - | - | 7 | E.S. CENTRAL | 1,002 | 671 | 207 | 67 | 24 | 33 | 80 |
| Worcester, Mass. | 70 | 62 | 6 | 1 | 1 | - | 13 | Birmingham, Ala. | 212 | 145 | 41 | 17 | 7 | 2 | 17 |
| MID. ATLANTIC | 2,430 | 1,722 | 475 | 151 | 43 | 38 | 155 | Chattanooga, Tenn. | 106 | 80 | 15 | 3 | 2 | 6 | 7 |
| Albany, N.Y. | 58 | 35 | 16 | 3 | 2 | 2 | 7 | Knoxville, Tenn. | 91 | 62 | 17 | 10 | 2 | - | 6 |
| Allentown, Pa. | 19 | 15 | 4 | - | - | - | 1 | Lexington, Ky. | 97 | 74 | 18 | 3 | 1 | 1 | 5 |
| Buffalo, N.Y. | 94 | 65 | 18 | 4 | 2 | 5 | 7 | Memphis, Tenn. | 258 | 154 | 63 | 21 | 4 | 16 | 24 |
| Camden, N.J. | 30 | 18 | 7 | 3 | - | 2 | 4 | Mobile, Ala. | 49 | 32 | 8 | 6 | 2 | 1 | - |
| Elizabeth, N.J. | 28 | 21 | 7 | - | - | - | - | Montgomery, Ala. | 47 | 36 | 10 | 1 | - | - | 6 |
| Erie, Pa.‡ | 48 | 38 | 5 | 3 | 2 | - | 2 | Nashville, Tenn. | 142 | 88 | 35 | 6 | 6 | 7 | 15 |
| Jersey City, N.J. | 44 | 33 | 7 | 4 | - | - | - | W.S. CENTRAL | 1,744 | 1,135 | 354 | 143 | 65 | 47 | 151 |
| New York City, N.Y. | 1,240 | 875 | 239 | 86 | 21 | 19 | 78 | Austin, Tex. | 88 | 55 | 21 | 8 | 3 | 1 | 8 |
| Newark, N.J. | 42 | 18 | 18 | 6 | - | - | - | Baton Rouge, La. | 112 | 70 | 27 | 10 | 2 | 3 | 8 |
| Paterson, N.J. | 29 | 20 | 4 | 3 | 1 | 1 | 2 | Corpus Christi, Tex. | 74 | 57 | 11 | 4 | 1 | 1 | 7 |
| Philadelphia, Pa. | 344 | 231 | 78 | 23 | 8 | 3 | 24 | Dallas, Tex. | 228 | 132 | 56 | 23 | 7 | 10 | 19 |
| Pittsburgh, Pa.‡ | 97 | 78 | 15 | 2 | 1 | 1 | 7 | El Paso, Tex. | 109 | 78 | 13 | 5 | 7 | 6 | 3 |
| Reading, Pa. | 19 | 17 | 2 | - | - | - | - | Ft. Worth, Tex. | 149 | 98 | 28 | 13 | 2 | 8 | 14 |
| Rochester, N.Y. | 129 | 105 | 19 | 2 | 2 | 1 | 8 | Houston, Tex. | 413 | 235 | 100 | 46 | 26 | 6 | 45 |
| Schenectady, N.Y. | 32 | 25 | 3 | 3 | 1 | - | - | Little Rock, Ark. | 86 | 61 | 18 | 5 | 1 | 1 | 4 |
| Scranton, Pa.‡ | 35 | 30 | 4 | 1 | - | - | 4 | New Orleans, La. | U | U | U | U | U | U | U |
| Syracuse, N.Y. | 81 | 57 | 18 | 2 | 2 | 2 | 7 | San Antonio, Tex. | 230 | 169 | 34 | 14 | 7 | 6 | 21 |
| Trenton, N.J. | 46 | 29 | 10 | 4 | 1 | 2 | 4 | Shreveport, La. | 105 | 69 | 22 | 6 | 5 | 3 | 14 |
| Utica, N.Y. | 15 | 12 | 1 | 2 | - | - | - | Tulsa, Okla. | 150 | 111 | 24 | 9 | 4 | 2 | 8 |
| Yonkers, N.Y. | U | U | U | U | U | U | U | MOUNTAIN | 1,115 | 787 | 213 | 79 | 24 | 12 | 88 |
| E.N. CENTRAL | 1,894 | 1,342 | 358 | 121 | 34 | 39 | 110 | Albuquerque, N.M. | 138 | 91 | 32 | 13 | 2 | - | 11 |
| Akron, Ohio | 61 | 41 | 17 | 2 | - | 1 | 3 | Boise, Idaho | 48 | 42 | 4 | 1 | 1 | - | 3 |
| Canton, Ohio | 43 | 33 | 8 | 2 | - | - | 3 | Colo. Springs, Colo. | 57 | 38 | 12 | 5 | 1 | 1 | 4 |
| Chicago, Ill. | U | U | U | U | U | U | U | Denver, Colo. | 115 | 76 | 23 | 9 | 3 | 4 | 7 |
| Cincinnati, Ohio | 149 | 110 | 23 | 6 | 4 | 6 | 9 | Las Vegas, Nev. | 218 | 150 | 49 | 15 | 4 | - | 13 |
| Cleveland, Ohio | 149 | 93 | 39 | 10 | 4 | 3 | 9 | Ogden, Utah | 36 | 26 | 6 | 2 | 2 | - | 6 |
| Columbus, Ohio | 210 | 154 | 38 | 9 | 4 | 5 | 9 | Phoenix, Ariz. | 168 | 108 | 29 | 19 | 7 | 5 | 14 |
| Dayton, Ohio | 148 | 112 | 23 | 10 | - | 3 | 7 | Pueblo, Colo. | 31 | 21 | 6 | 4 | - | - | 6 |
| Detroit, Mich. | 216 | 124 | 57 | 28 | 5 | 2 | 11 | Salt Lake City, Utah | 133 | 106 | 20 | 6 | - | 1 | 17 |
| Evansville, Ind. | 57 | 53 | 1 | 2 | - | 1 | 6 | Tucson, Ariz. | 171 | 129 | 32 | 5 | 4 | 1 | 7 |
| Fort Wayne, Ind. | 63 | 51 | 8 | 3 | 1 | - | 4 | PACIFIC | 1,253 | 914 | 210 | 85 | 23 | 20 | 141 |
| Gary, Ind. | 11 | 6 | 4 | - | - | 1 | - | Berkeley, Calif. | 19 | 15 | 2 | 2 | - | - | 2 |
| Grand Rapids, Mich. | 33 | 24 | 6 | - | - | 3 | 3 | Fresno, Calif. | 103 | 66 | 27 | 7 | - | 3 | 8 |
| Indianapolis, Ind. | 224 | 140 | 52 | 17 | 7 | 8 | 11 | Glendale, Calif. | U | U | U | U | U | U | U |
| Lansing, Mich. | 32 | 23 | 8 | - | - | 1 | 1 | Honolulu, Hawaii | 101 | 67 | 24 | 7 | 2 | 1 | 11 |
| Milwaukee, Wis. | 145 | 104 | 28 | 7 | 4 | 2 | 8 | Long Beach, Calif. | 89 | 66 | 16 | 4 | 3 | - | 13 |
| Peoria, Ill. | 52 | 35 | 6 | 9 | 1 | 1 | 7 | Los Angeles, Calif. | U | U | U | U | U | U | U |
| Rockford, Ill. | 63 | 47 | 7 | 8 | 1 | - | 4 | Pasadena, Calif. | 24 | 19 | 3 | 1 | - | 1 | 3 |
| South Bend, Ind. | 54 | 44 | 9 | 1 | - | - | 5 | Portland, Oreg. | 129 | 103 | 17 | 9 | - | - | 9 |
| Toledo, Ohio | 118 | 95 | 14 | 5 | 2 | 2 | 8 | Sacramento, Calif. | U | U | U | U | U | U | U |
| Youngstown, Ohio | 66 | 53 | 10 | 2 | 1 | - | 2 | San Diego, Calif. | 200 | 137 | 32 | 18 | 7 | 5 | 19 |
| W.N. CENTRAL | 924 | 695 | 140 | 45 | 20 | 24 | 75 | San Francisco, Calif. | U | U | U | U | U | U | U |
| Des Moines, Iowa | 114 | 90 | 12 | 8 | 1 | 3 | 19 | San Jose, Calif. | 233 | 179 | 32 | 11 | 6 | 5 | 31 |
| Duluth, Minn. | 42 | 32 | 8 | - | 2 | - | 1 | Santa Cruz, Calif. | 44 | 40 | 2 | 2 | - | - | 8 |
| Kansas City, Kans. | 48 | 30 | 12 | 2 | 2 | 2 | 4 | Seattle, Wash. | 139 | 95 | 26 | 11 | 3 | 4 | 16 |
| Kansas City, Mo. | 101 | 74 | 15 | 6 | 4 | 2 | 10 | Spokane, Wash. | 57 | 44 | 7 | 4 | 1 | 1 | 9 |
| Lincoln, Nebr. | 35 | 26 | 5 | 3 | 1 | - | 6 | Tacoma, Wash. | 115 | 83 | 22 | 9 | 1 | - | 12 |
| Minneapolis, Minn. | 199 | 158 | 25 | 8 | 2 | 6 | 16 | TOTAL | 12,466 [§] | 8,712 | 2,351 | 856 | 289 | 255 | 963 |
| Omaha, Nebr. | 97 | 76 | 15 | 4 | - | 2 | 6 | | | | | | | | |
| St. Louis, Mo. | 84 | 53 | 22 | 4 | 1 | 4 | - | | | | | | | | |
| St. Paul, Minn. | 100 | 84 | 11 | 2 | 3 | - | 8 | | | | | | | | |
| Wichita, Kans. | 104 | 72 | 15 | 8 | 4 | 5 | 5 | | | | | | | | |

U: Unavailable. - :No reported cases.

*Mortality data in this table are voluntarily reported from 122 cities in the United States, most of which have populations of $\geq 100,000$. A death is reported by the place of its occurrence and by the week that the death certificate was filed. Fetal deaths are not included.

[†]Pneumonia and influenza.

[§]Because of changes in reporting methods in this Pennsylvania city, these numbers are partial counts for the current week. Complete counts will be available in 4 to 6 weeks.

[¶]Total includes unknown ages.

Contributors to the Production of the *MMWR* (Weekly)

Weekly Notifiable Disease Morbidity Data and 122 Cities Mortality Data

Samuel L. Groseclose, D.V.M., M.P.H.

State Support Team

Robert Fagan
Jose Aponte
Gerald Jones
David Nitschke
Scott Noldy
Carol A. Worsham

CDC Operations Team

Carol M. Knowles
Deborah A. Adams
Willie J. Anderson
Patsy A. Hall
Suzette A. Park
Felicia J. Perry
Pearl Sharp

Informatics

T. Demetri Vacalis, Ph.D.

Michele D. Renshaw

Erica R. Shaver

The *Morbidity and Mortality Weekly Report (MMWR)* Series is prepared by the Centers for Disease Control and Prevention (CDC) and is available free of charge in electronic format and on a paid subscription basis for paper copy. To receive an electronic copy on Friday of each week, send an e-mail message to listserv@listserv.cdc.gov. The body content should read *SUBscribe mmwr-toc*. Electronic copy also is available from CDC's World-Wide Web server at <http://www.cdc.gov/mmwr> or from CDC's file transfer protocol server at <ftp://ftp.cdc.gov/pub/Publications/mmwr>. To subscribe for paper copy, contact Superintendent of Documents, U.S. Government Printing Office, Washington, DC 20402; telephone (202) 512-1800.

Data in the weekly *MMWR* are provisional, based on weekly reports to CDC by state health departments. The reporting week concludes at close of business on Friday; compiled data on a national basis are officially released to the public on the following Friday. Address inquiries about the *MMWR* Series, including material to be considered for publication, to: Editor, *MMWR* Series, Mailstop C-08, CDC, 1600 Clifton Rd., N.E., Atlanta, GA 30333; telephone (888) 232-3228.

All material in the *MMWR* Series is in the public domain and may be used and reprinted without permission; citation as to source, however, is appreciated.

| | | |
|---|--|---|
| Director, Centers for Disease Control and Prevention Jeffrey P. Koplan, M.D., M.P.H. | Director, Epidemiology Program Office Stephen B. Thacker, M.D., M.Sc. | Writers-Editors, <i>MMWR</i> (Weekly) Jill Crane David C. Johnson |
| Deputy Director for Science and Public Health, Centers for Disease Control and Prevention David W. Fleming, M.D. | Editor, <i>MMWR</i> Series John W. Ward, M.D. Acting Managing Editor, <i>MMWR</i> (Weekly) Teresa F. Rutledge | Desktop Publishing Lynda G. Cupell Morie M. Higgins |

☆U.S. Government Printing Office: 2001-633-173/48209 Region IV
